



PERSONS AND SCENES IN DAY'S GRIST OF NEWS FROM HOME AND ABROAD AS CAUGHT BY THE CAMERA



GERMANY'S DEVICE TO SAVE ITS SAILORS' LIVES

This curious apparatus has recently undergone successful tests at the harbor of Bremenhaven. It can be made airtight and carries food enough to sustain life for several days. The pistol is for the purpose of attracting the attention of passing ships. German warships are to carry a large supply of the lifesavers.



ATHLETICS TAKE STROLL UNDER PALMETTOS OF TAMPA

Here are Jack McInnis, Father McCloskey and Napoleon Lajoie as they were caught by the EVENING LEDGER's snapshot man in Florida. Father McCloskey is an Atlantic City priest who takes his vacation every year with the Mackmen. No one gets more out of the spring training trip than he.



THE NEWSBOYS' CHAMPION BOXER AND SOME OF HIS ADMIRERS

Law Tendler has shown fine form in his recent bouts and gives promise of a stirring career in the ring. He fought at the Olympia last night. He sells the EVENING LEDGER, as do most of his friends.



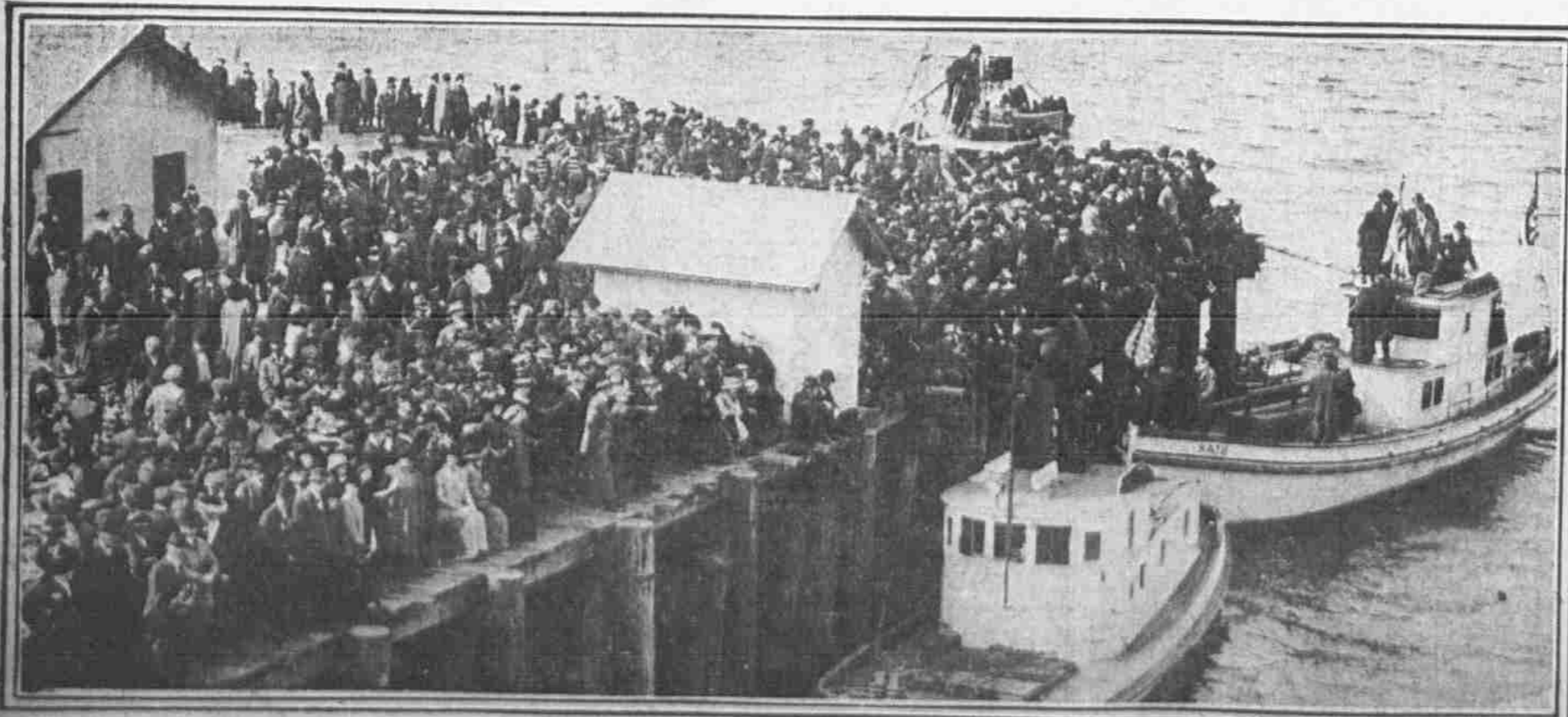
BEAUTIFUL BELGIAN REFUGEE

Mrs. Frank Oeth, with two sisters, has recently found a haven in Collingswood, N. J., after fleeing from the advance of the Germans in their unhappy country.



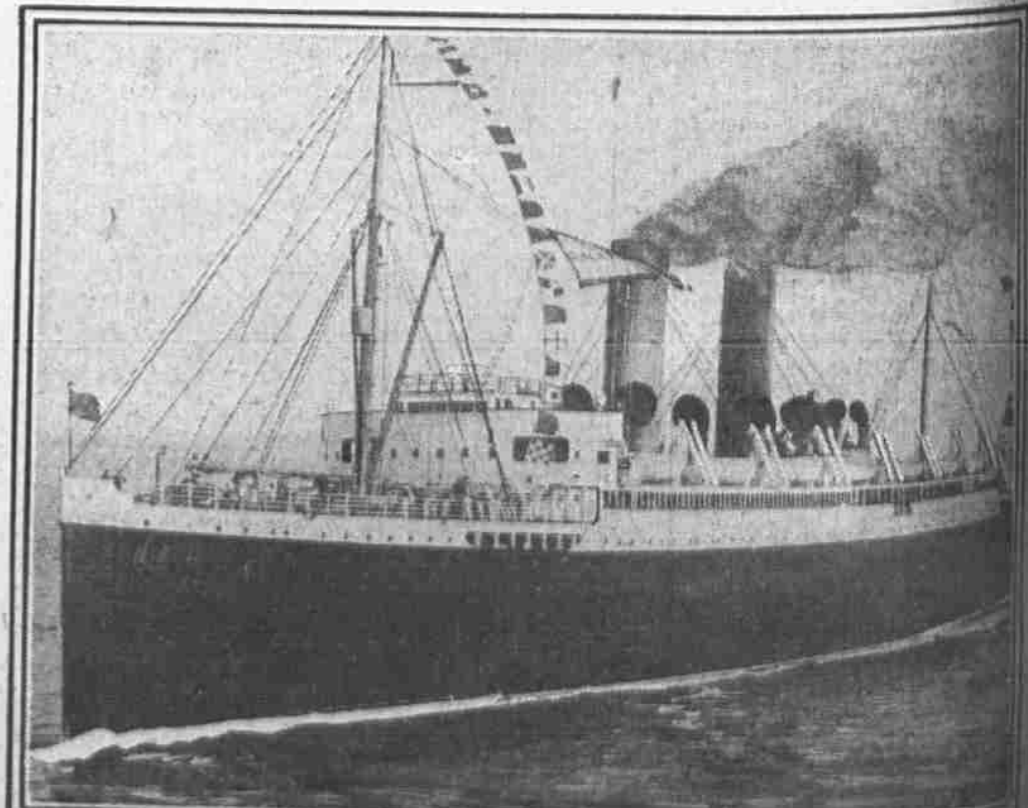
AUTO ON THE ROOF IS A GARAGE SIGN

If the owner of this establishment in West Philadelphia put the machine up there for the purpose of attracting attention, he has certainly succeeded, as many passersby stop to gaze curiously.



THE WEST TURNS OUT IN FORCE TO CARRY GREETINGS TO PHILADELPHIA-MADE SHIP ON HER ARRIVAL ON COAST

The huge steamship Great Northern, which was recently completed at Cramps' shipyard and which sailed from this port with a passenger list that included many prominent men, arrived at her home port of Flavel, at the mouth of the Columbia River, Oregon, a few days ago. She was met by a delegation of 2000 business men from Portland, who



are shown above. The big vessel will ply between Flavel and San Francisco, connecting at the former point with the trains to Portland. Her sister ship, the Northern Pacific, will sail from Philadelphia this week. The two ships will give the Hill railroad interests their first entrance into California. The vessels are both giants and cost about \$5,000,000 each.