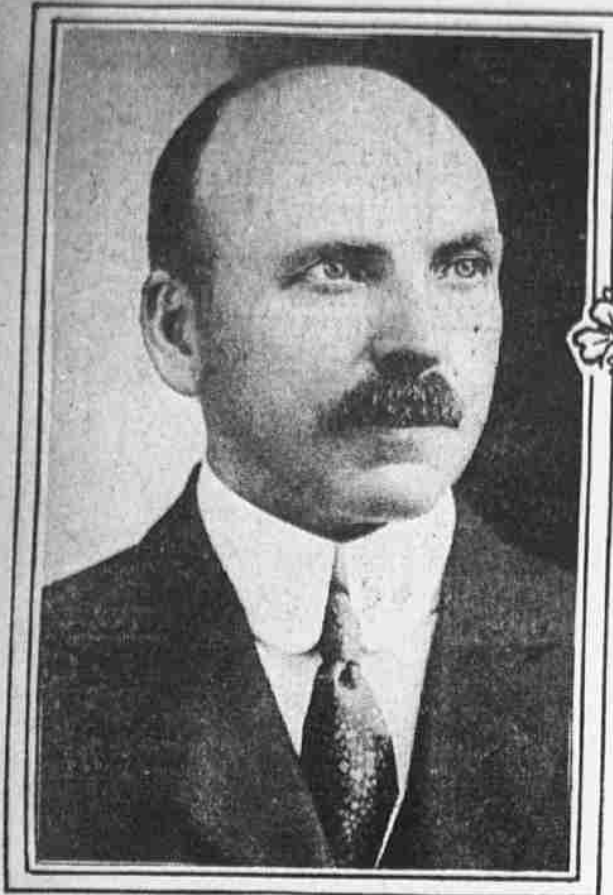




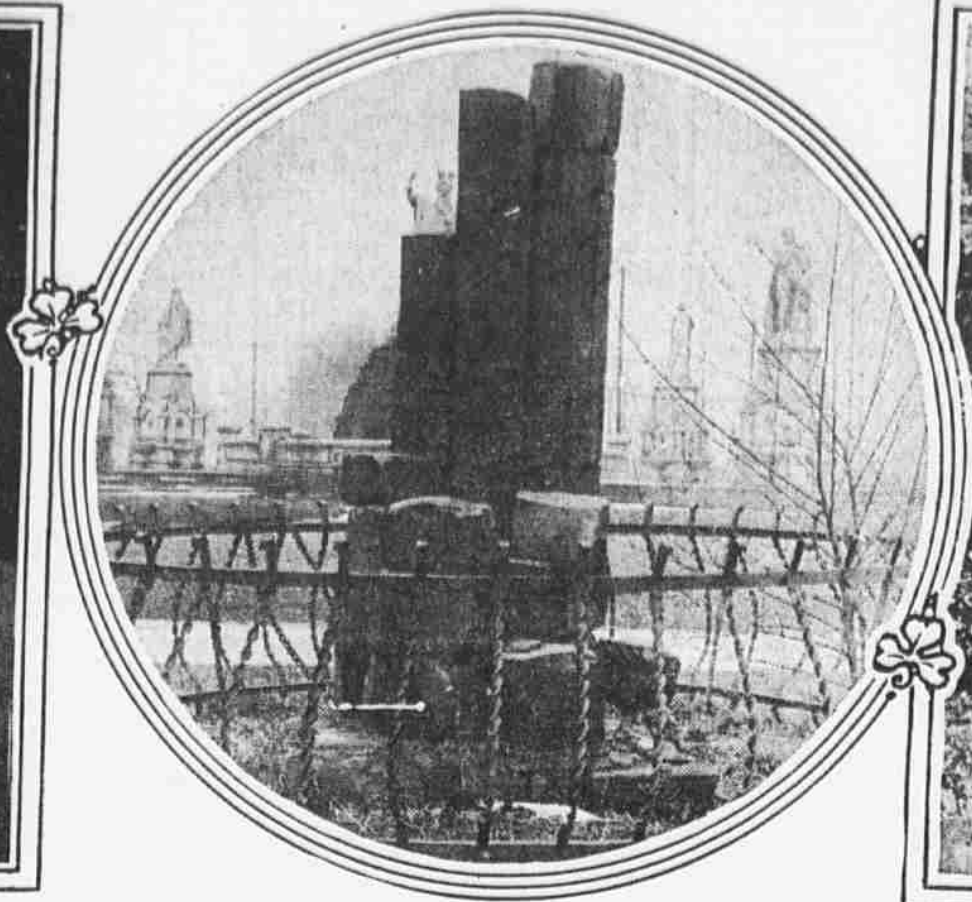
Evening ILLUSTRATED Ledger

WEDNESDAY
March 17, 1915

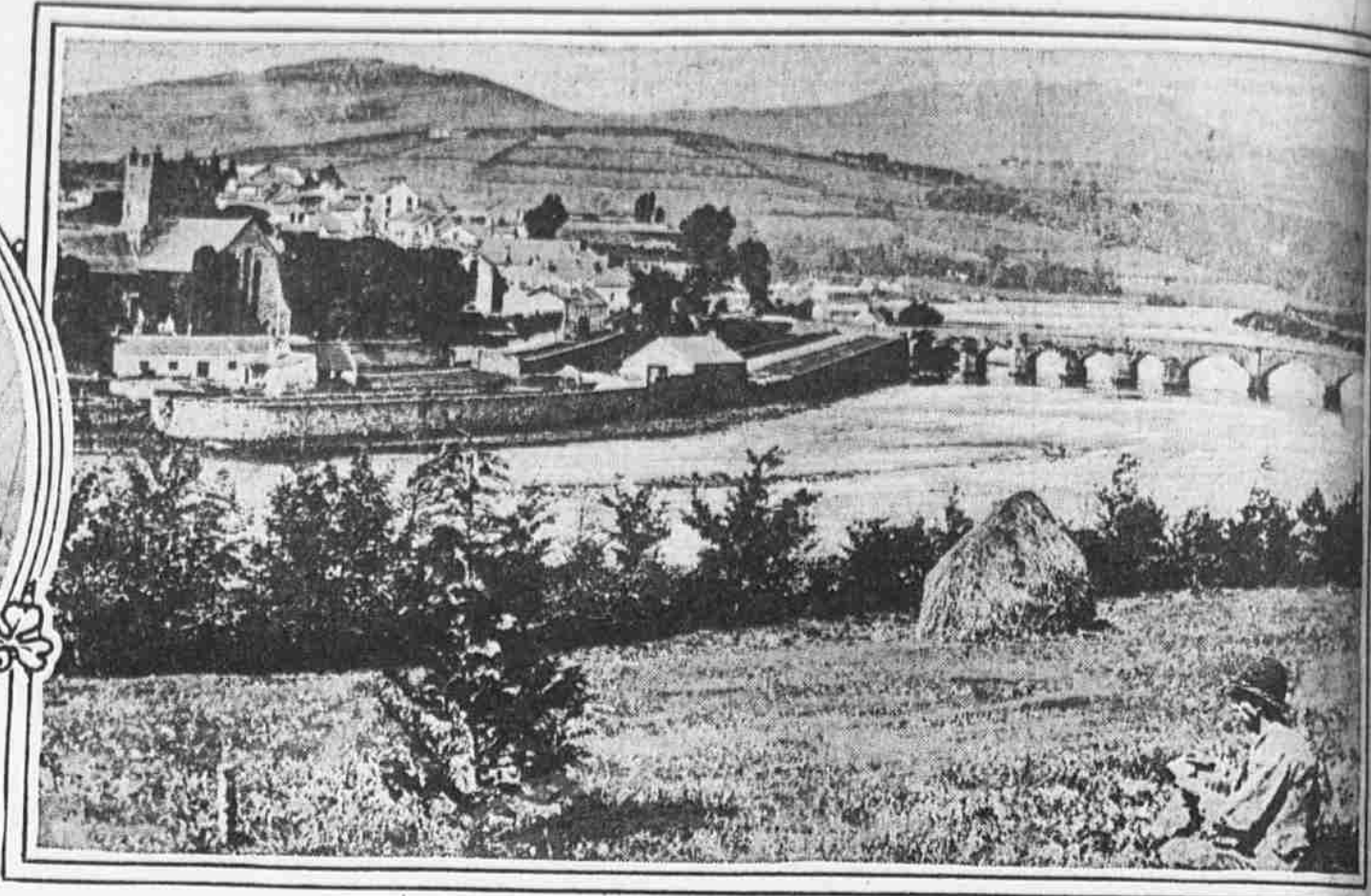
SCENES AND PERSONS WELL-KNOWN TO THOSE WHO TODAY HONOR ST. PATRICK'S MEMORY



EX-REPRESENTATIVE MICHAEL DONOHOE



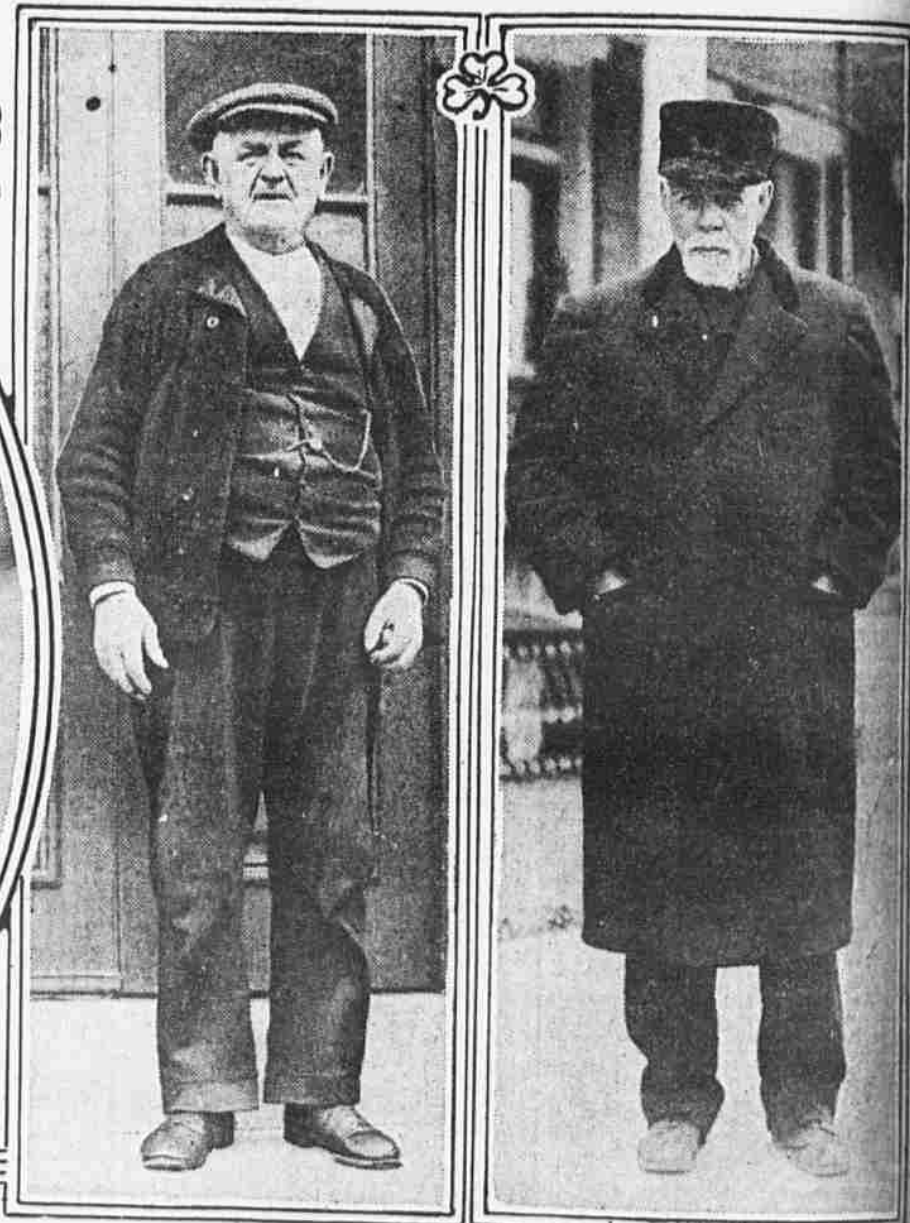
STONES FROM GIANT'S CAUSEWAY, IRELAND, IN FAIRMOUNT PARK



"WHERE THE RIVER SHANNON FLOWS" AT KILLALOE

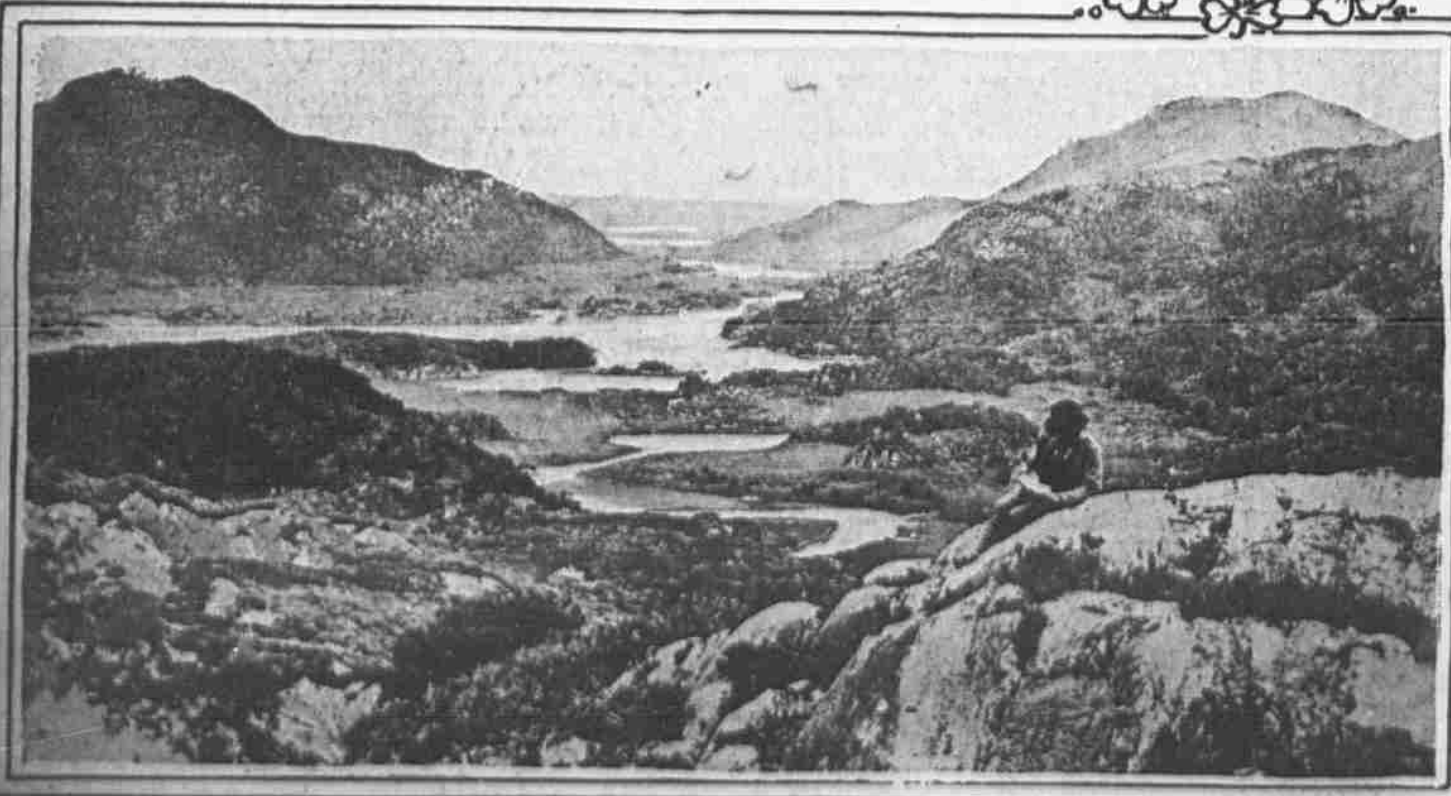


PORT RICHMOND'S FAMOUS PAIR
"Jimmy" Byrnes and McTammany's donkey.



TWO VETERANS FROM THE OLD COUNTRY
One is "Jimmy" Byrnes' father and the other is "Pat" Slavin, Joe's "dad," born on March 17.

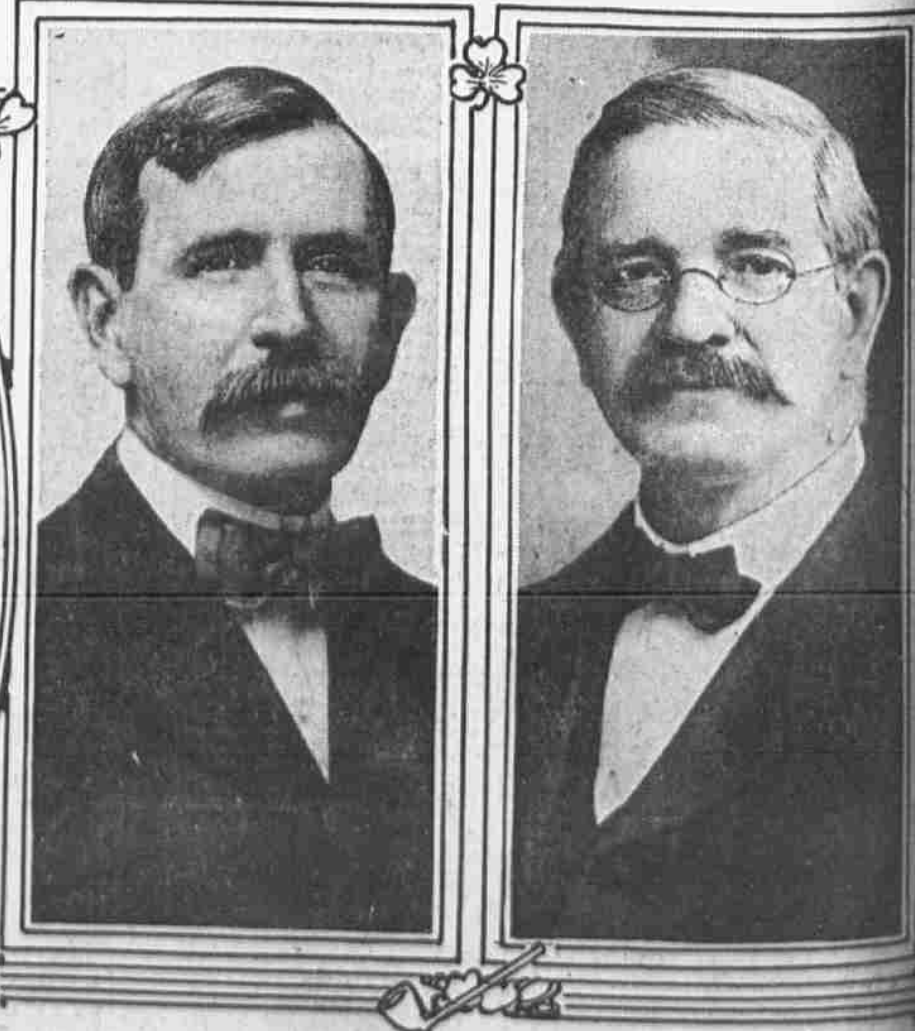
"IS IT WID OUT YER SHAMROCK YE ARE THIS MARNIN'?"



THE BEAUTIFUL LAKES OF KILLARNEY



FELIX HAMIL
He came from County Armagh.



A PAIR KNOWN TO ALL PHILADELPHIA IRISHMEN
J. Washington Logue and James O'Sullivan.