



A TRIP TO ELKTON, WHERE THE BRIDES COME FROM, IS RECORDED BY A STAFF PHOTOGRAPHER



JUST OFF THE 9 O'CLOCK MARRIAGE SPECIAL
The first thing to do on arriving at the Maryland Getna Green, of course, is to bargain with a chauffeur or cabby.



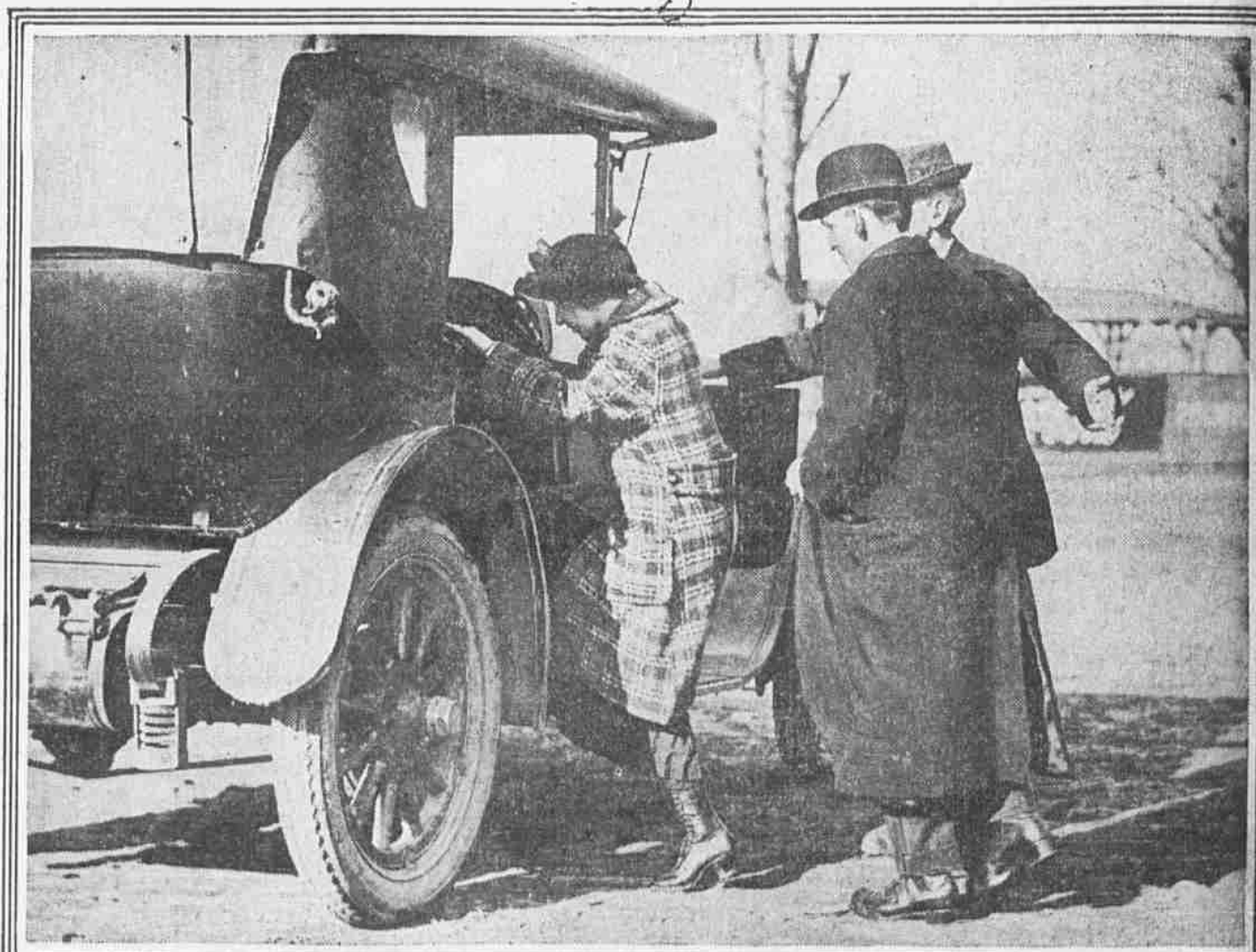
A QUARTET ON MATRIMONY BENT
When facing an ordeal, it always makes things easier to find there are others in the same fix. Here are two couples who have discovered they have a common purpose and are smiling upon each other encouragingly as they start for Cupid's altar.



THE LICENSE CLERK IS SYMPATHETIC
He has done this many a time before and it is the work of but a few moments to obtain the document.



ELKTON, THE WORD THAT MARKS THE JOURNEY'S END
That sign on the station building doubtless has caused an extra thump in the tremulous hearts of many a prospective bride and bridegroom. Too late to back out now, though parental wrath be waiting back home.



ONE OF THE MATRIMONIAL MOTORCARS
If there are two of you and if you are young and if you look slightly lost, you do not have to say where you want to go—the chauffeur knows. "Step right inside, please."



BRYAN RECEIVES THREE-MILE PEACE PETITION FROM CHILDREN
School pupils from 45 States of the Union to the number of 350,000 signed the petition addressed to the rulers of the Warring Powers which was presented to the Secretary of State by 12 little girls from the Washington public schools. The names attached measured almost three miles in length. With Secretary Bryan in the picture is Senator R. B. Nason, Ambassador from the Argentine Republic.



300,000 ATTEND OPENING DAY AT THE PANAMA-PACIFIC EXPOSITION
One of the greatest throngs that ever gathered in one place in the United States waited at the entrance gates of the Exposition until President Wilson pressed a button in Washington, releasing the pent up waters in the Fountain of Energy, shown above, and formally starting the ceremonies. The buildings here belong to the Court of Jewels.