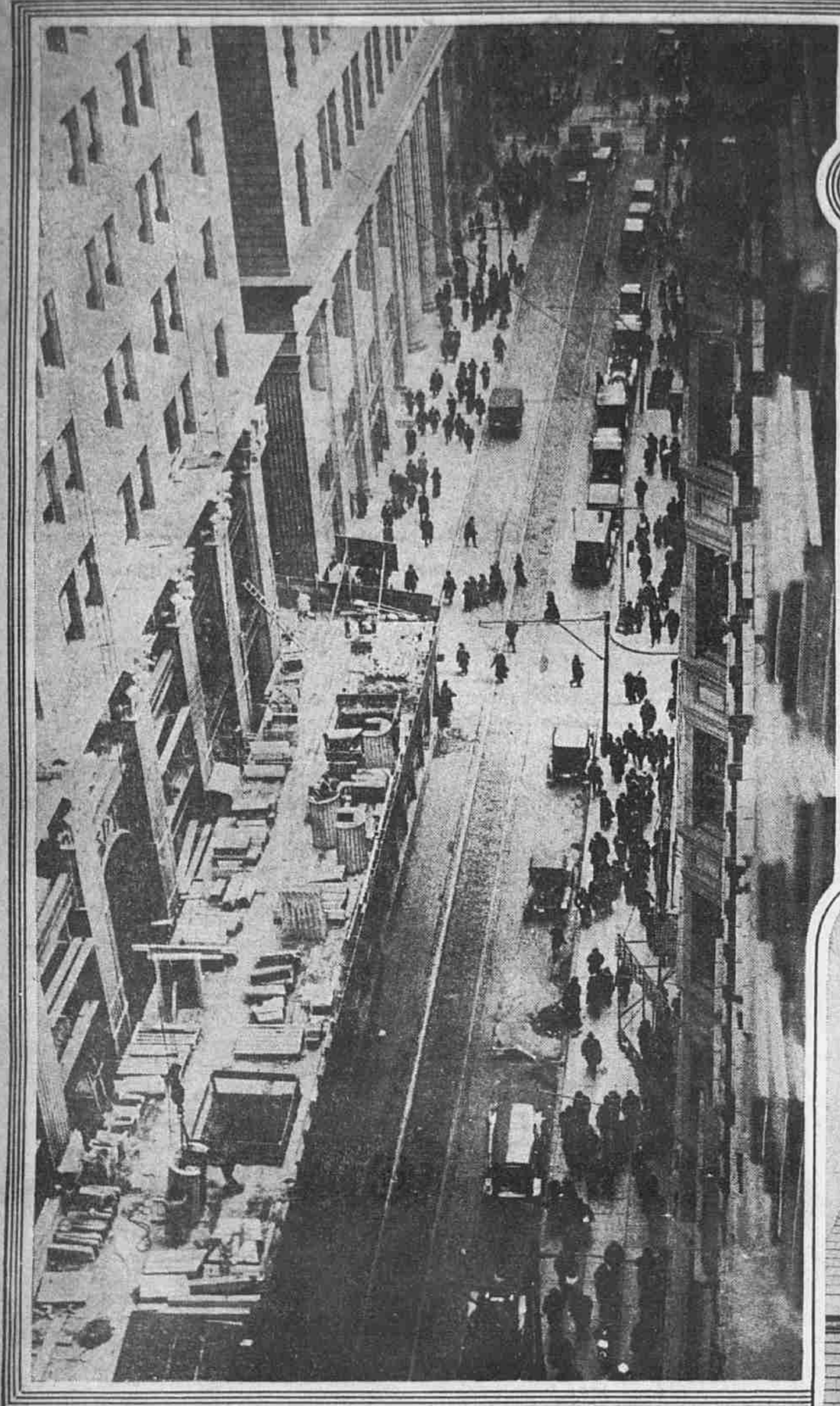
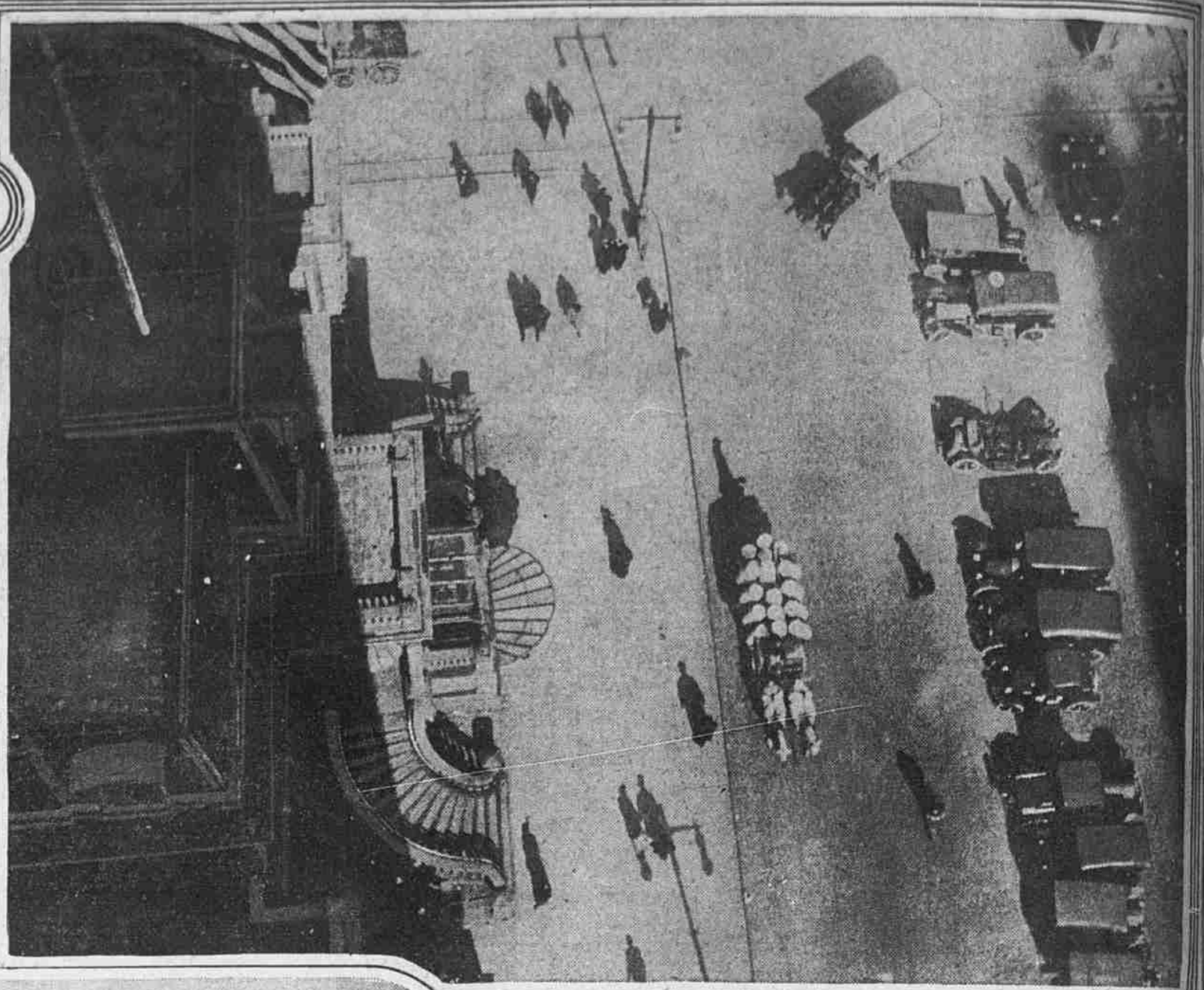




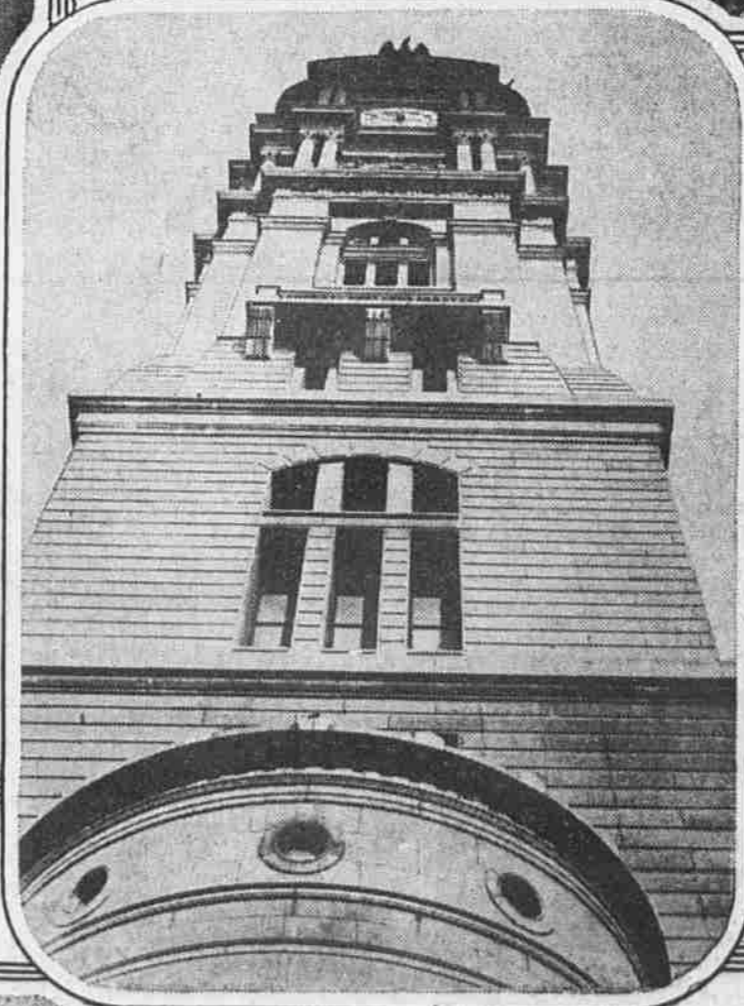
CITY'S SIGHTS AND STREETS FROM ANGLES AND VIEWPOINTS TO WHICH THE CITIZEN SÉLDOM ATTAINS



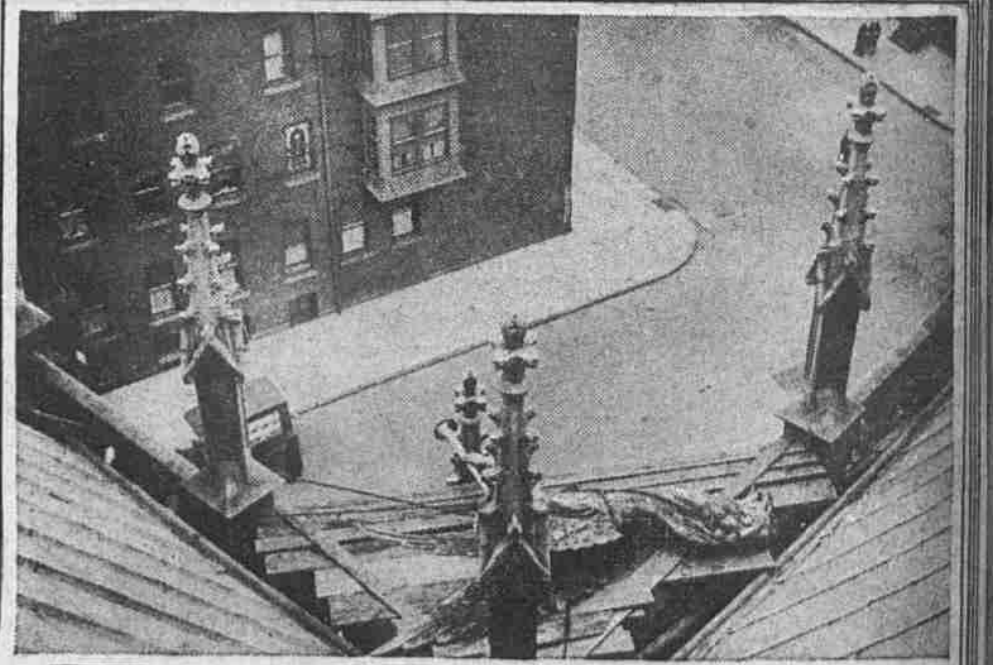
LOOKING DOWN INTO ONE OF PHILADELPHIA'S GRAND CANONS  
Chestnut street, between Broad and Thirteenth, from the 17th floor of the Real Estate Trust Building. At the left is the scaffolding in front of the new Widener Building.



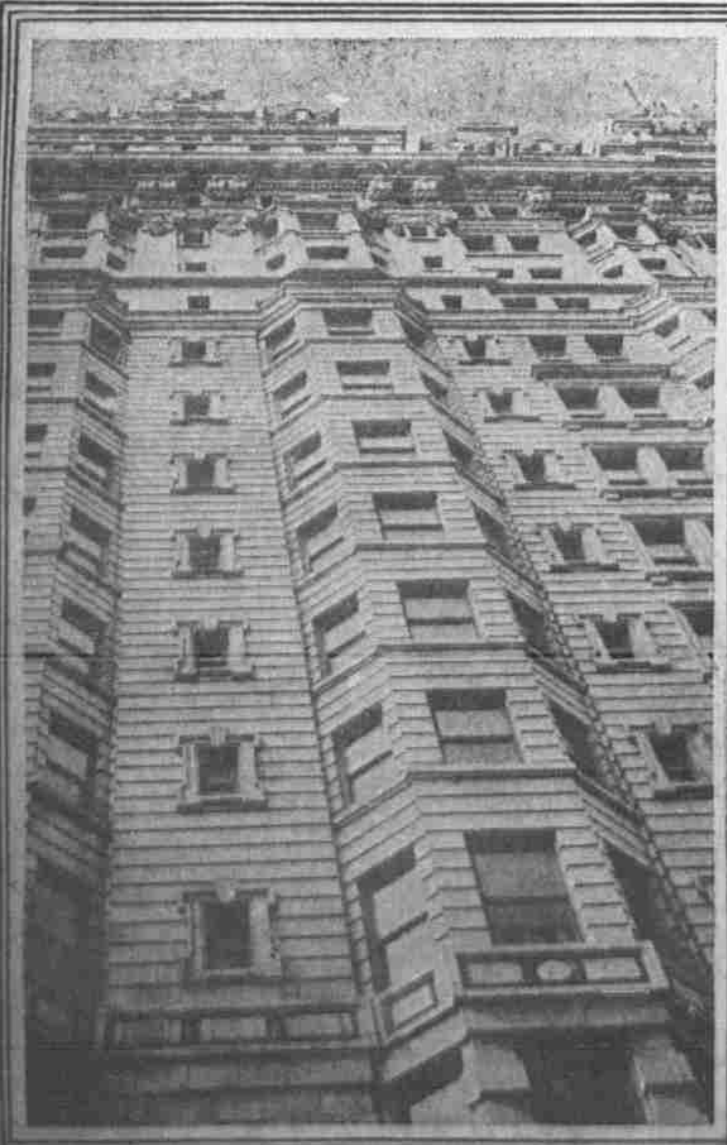
BROAD STREET AT THE CORNER OF SANSOM  
The curves and angles at the left belong to the front of the Union League Club as viewed from the top of the Manufacturers' Club.



GUESS WHAT IT IS?  
Notice the eagle peering over at the top. It's the tower of City Hall as viewed by a camera pointed up from its base.



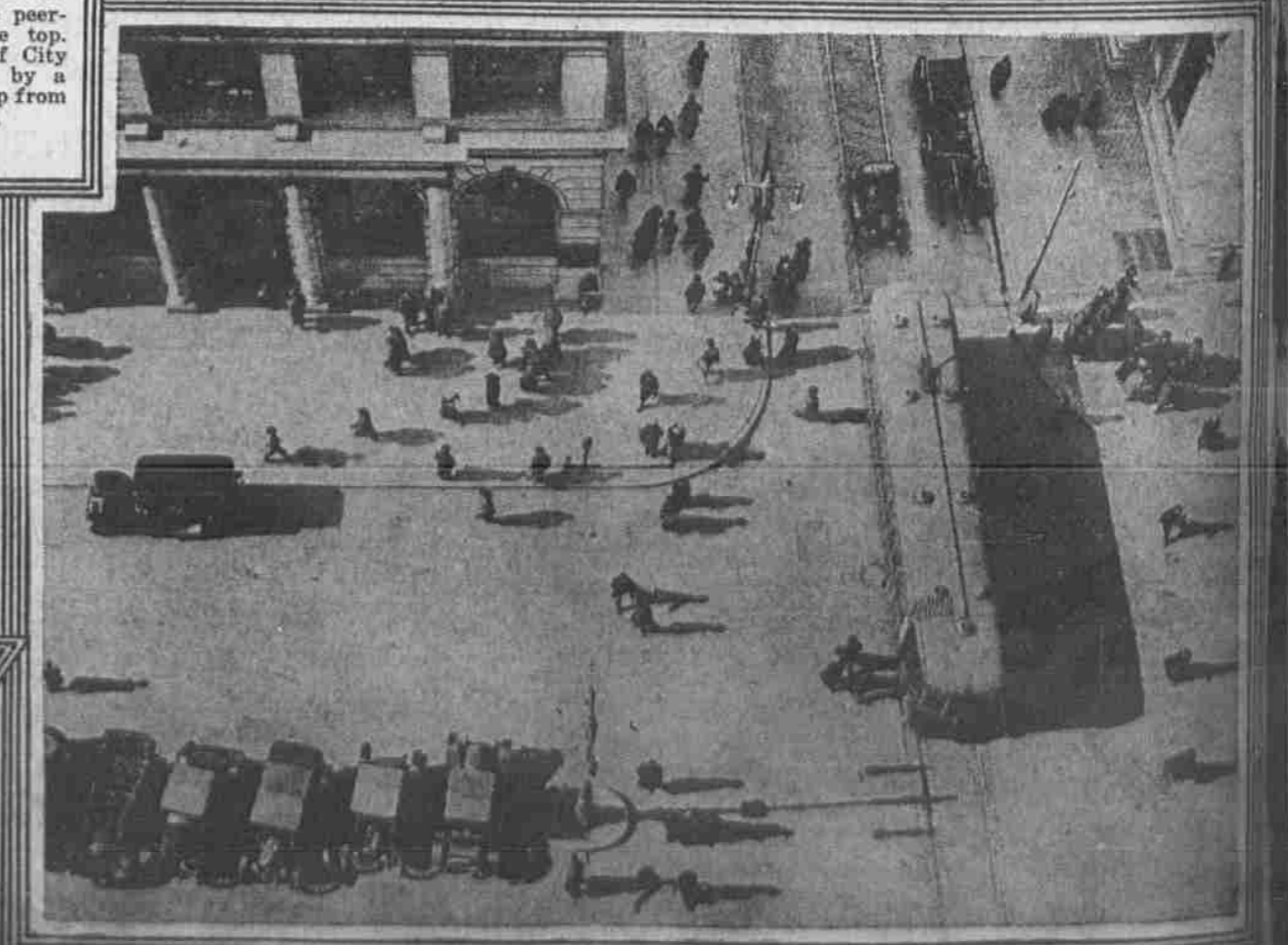
A TRIANGLE OF GARGOYLE-TIPPED SPIRES  
It has a foreign-looking flavor, but it's the corner of 18th and Diamond streets, looking over the roof's edge of the Church of the Advocate.



A CHINESE TEMPLE EFFECT  
The wall of the Bellevue-Stratford Hotel, enlarged at the bottom by the camera lens' peculiar distortion of objects close by as compared with those more distant.



WHERE SKYSCRAPERS ALMOST MEET  
Looking up between the old and new Land Title Buildings. To get the effect of looming height, hold the picture over your head and gaze at the structure's points.



ORDINARILY THE CITY'S BUSIEST AND MOST CROWDED CORNER  
The intersection of Broad and Chestnut streets. It appeared to be thronged at the time, but the camera insists on showing only motionless figures with much space between, hence the impression of eddying crowds made on the eye is lost. A curious effect is produced by the shadow of the cross-arm of the lamp post in the foreground, falling as it does exactly on top of one rail of the car track.