

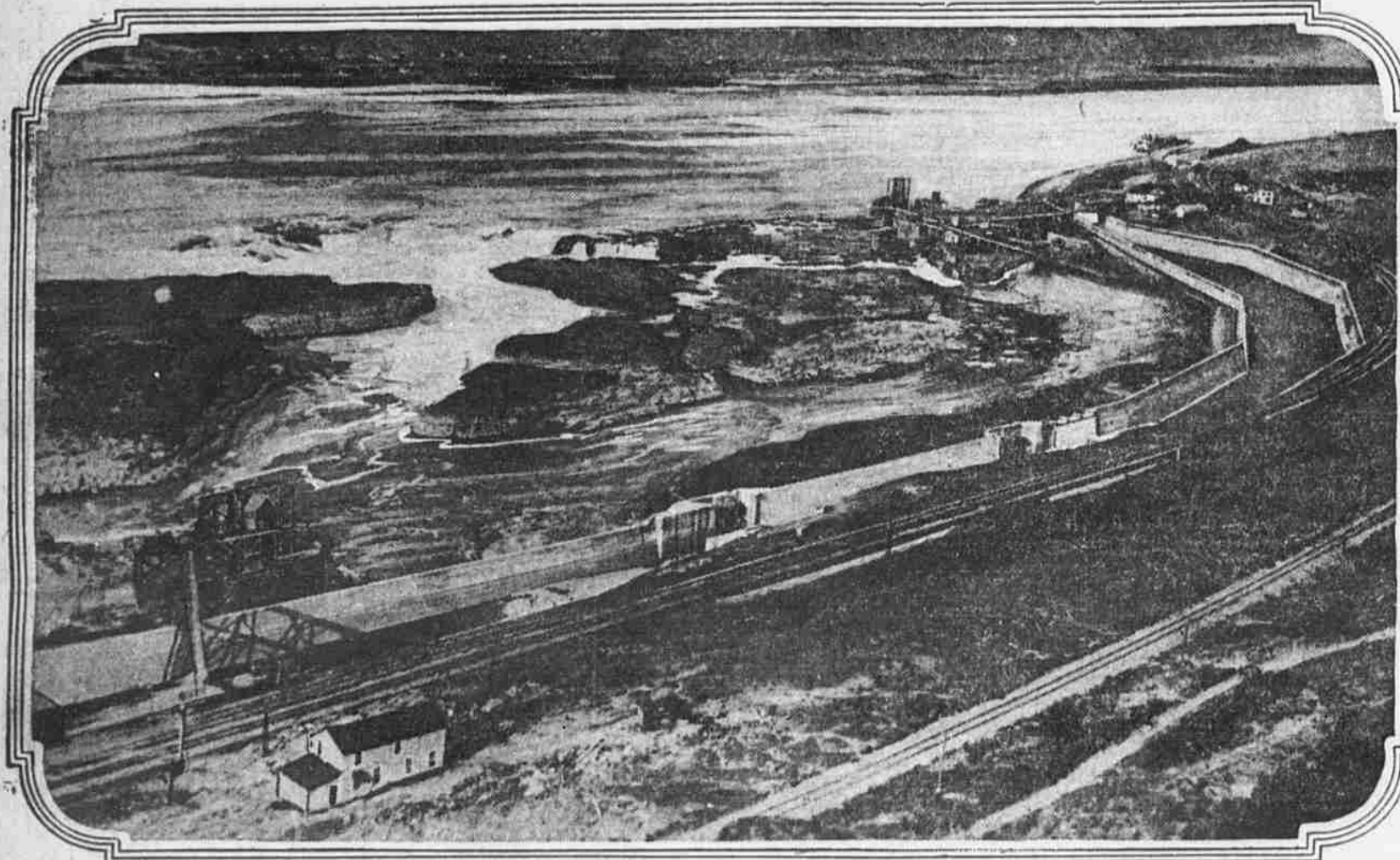
PERSONS AND PLACES THAT FIGURE IN THE DAY'S NEWS AS RECORDED BY THE PHOTOGRAPHER



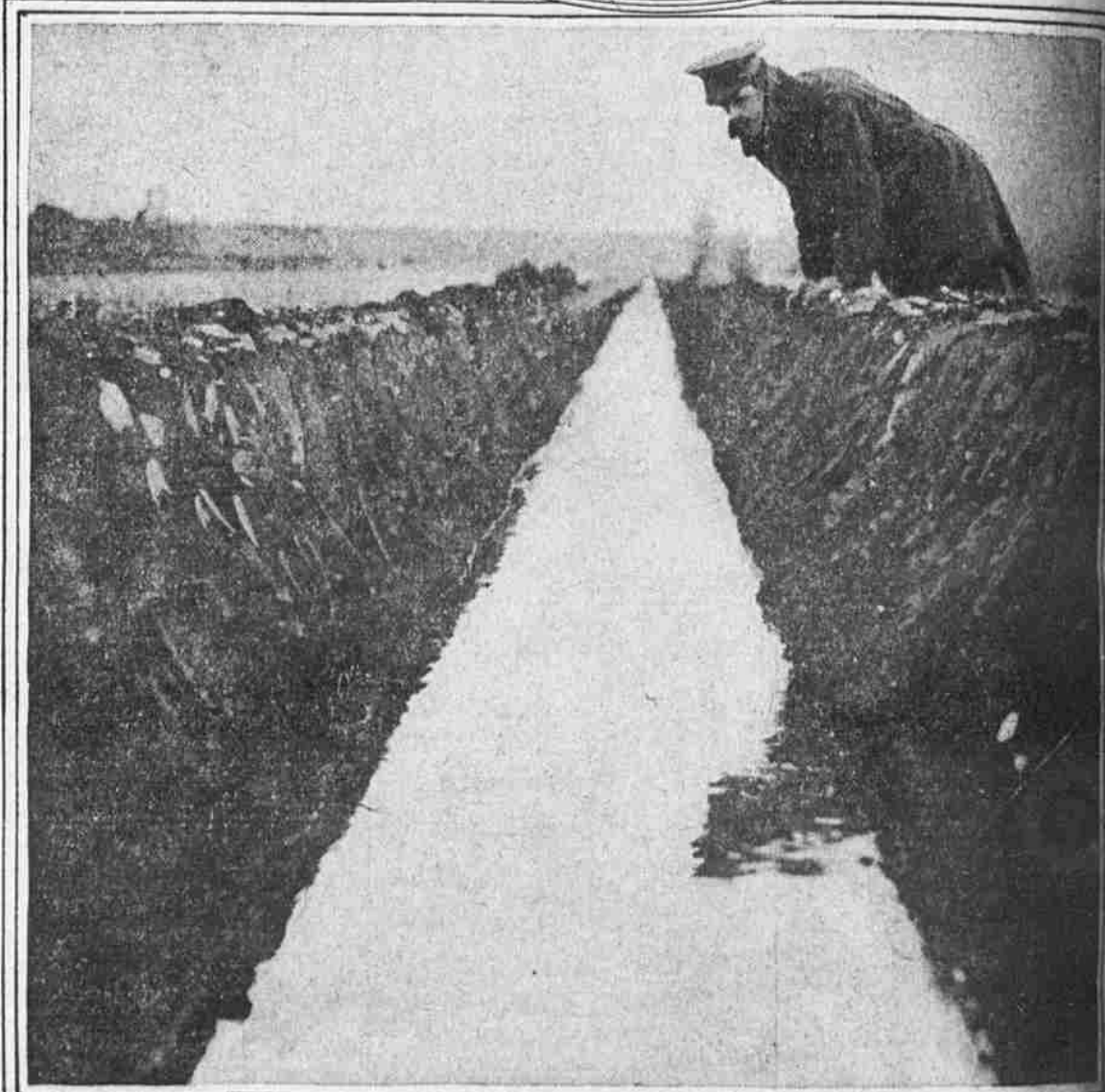
A BREAD LINE THAT FORMS EVERY DAY, THOUGH ITS MEMBERS PAY CASH AS THEY GO
This is the line found every day stretching away from the doors of one of the biggest bakeries in the city at the hour when one-day-old loaves are placed on sale. Its members come to get first choice. This picture is of interest just now on account of the fact that the recent rise in the price of flour has caused most of these buyers to be content with two loaves where formerly they bought a dozen.



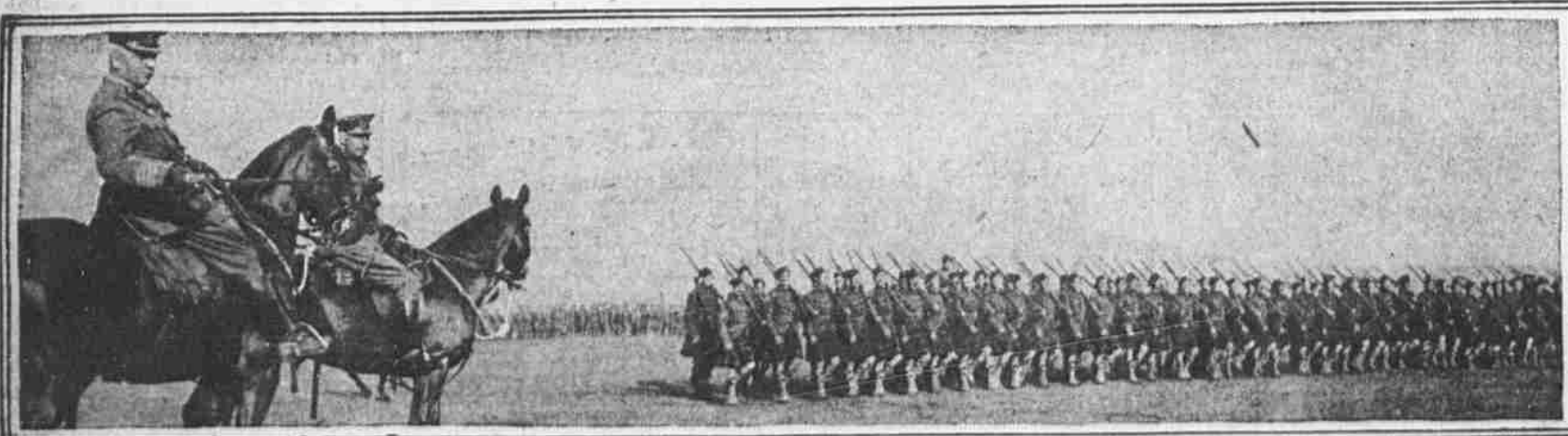
SENATOR MORRIS SHEPPARD
Of Texas, who has raised the furore over the question as to whether the District of Columbia shall be wet or dry, and who is bent on making it arid, is one of the youngest members of the Senate, being not yet 40 years old.



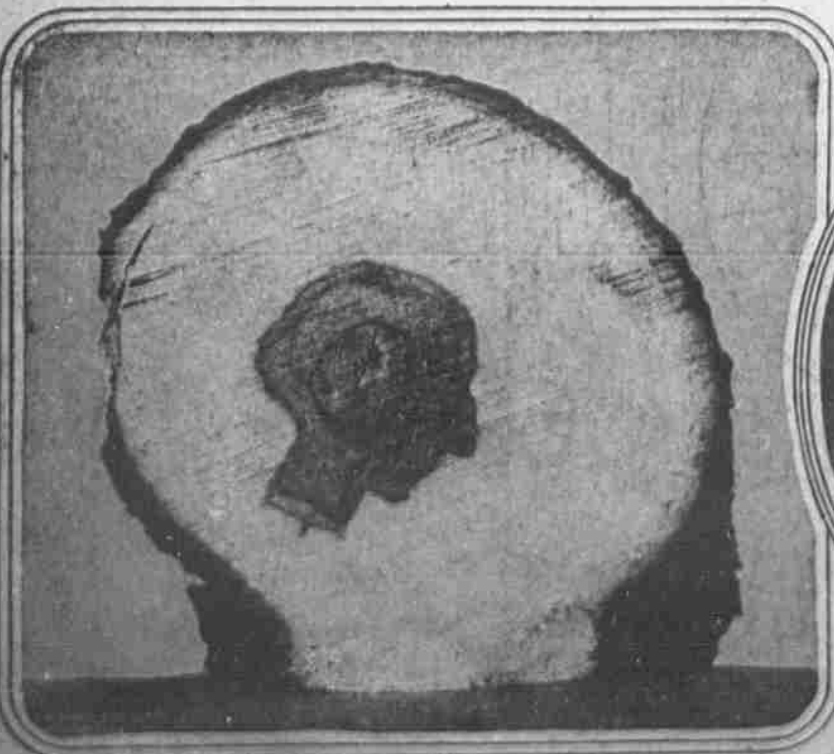
GREAT CELILO CANAL WHICH WILL OPEN UP FERTILE BASIN OF COLUMBIA RIVER
The construction of this \$4,000,000 work is being watched with interest not second to the Panama Canal by the people of Oregon and Idaho. It will make free passage possible from Lewiston, Idaho, to the sea, a distance of 476 miles. It will carry the great wheat yield of the Columbia basin direct to vessels that ply the Pacific.



WATER-FILLED TRENCH ABANDONED TO BRITISH BY GERMANS
This picture reveals the reason for the stories of discomfort and suffering that have come from the war front. Men have had to stand in such trenches in the coldest weather for days at a time, not daring to move because of the hail of fire. Pneumonia has claimed many victims.



CANADIAN TROOPERS NOW ON CONTINENT REVIEWED BY DUKE OF CONNAUGHT
The Canadian troopers serving with the Allies in France and Belgium are giving a good account of themselves, if reports recently received from the front are true. They distinguished themselves by a charge a few days after arriving at the firing line and have already paid their toll of dead and wounded. This picture shows one of the Scottish regiments on parade.



HEART OF TREE CUT DOWN IN INDEPENDENCE SQUARE REPRODUCES WASHINGTON'S FEATURES
When one of the big elm trees that has long decorated Independence Square was cut down a day or two ago, some one noticed that a cross section revealed a heart whose outline was curiously reminiscent of the features of the Father of His Country. In order to compare the result, a photograph was made of the statue of Washington which stands in the rotunda at City Hall, and as can be seen above, the likeness is remarkable, to say the least.



IS EDUCATION POISONED BY WEALTH? THEY ASK
Left to right, seated—James R. O'Connell, of the District of Columbia; Chairman Frank P. Walsh, of Missouri; Mrs. J. Borden Harriman, of New York, and Harris Weinstein, of California. Standing, left to right—John E. Lennon, of Illinois, and S. Thurston Bellard, of Kentucky. This photograph was made in New York City Hall, where the Federal Industrial Commission is conducting a hearing.