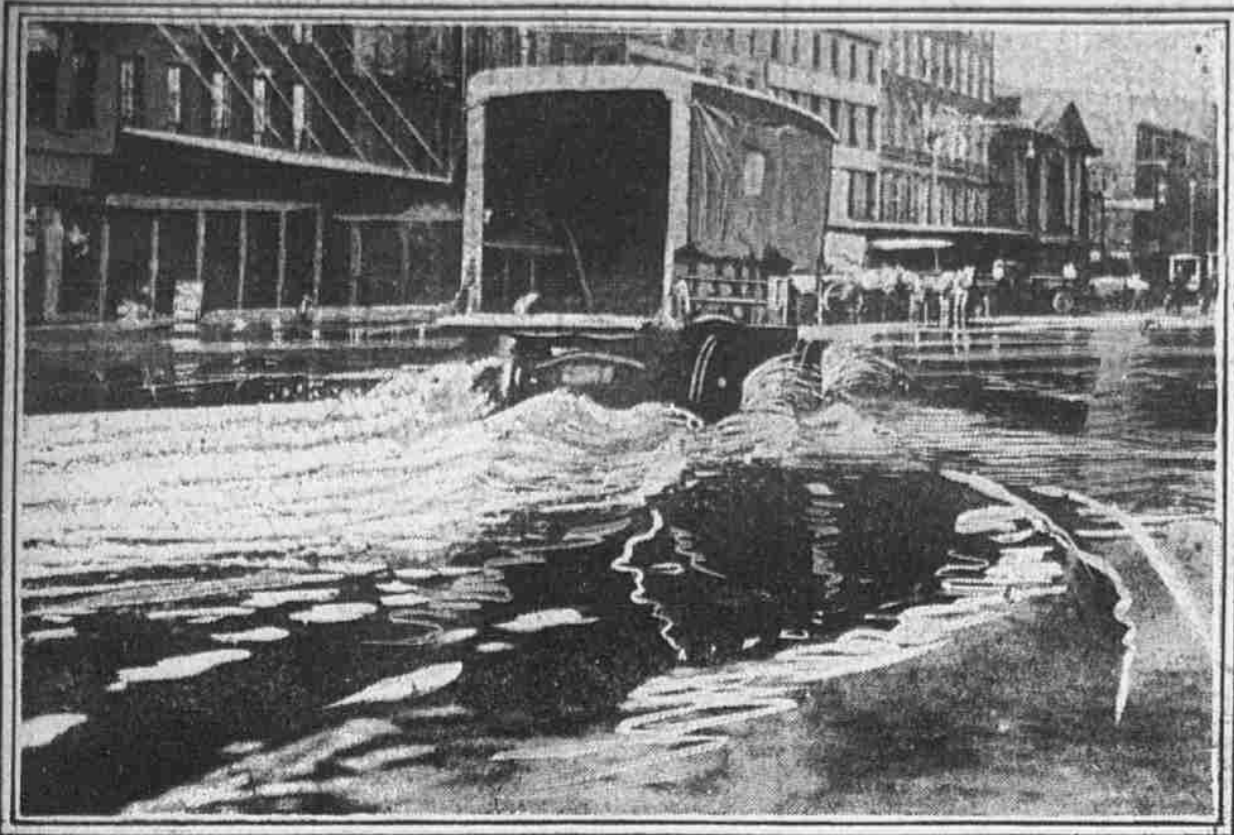




Evening Illustrated Ledger

FRIDAY
January 15, 1915

EFFECTS OF FLOOD LOCALLY AND VIEWS BY FLASHLIGHT OF LAST NIGHT'S GREAT TRANSIT PROCESSION



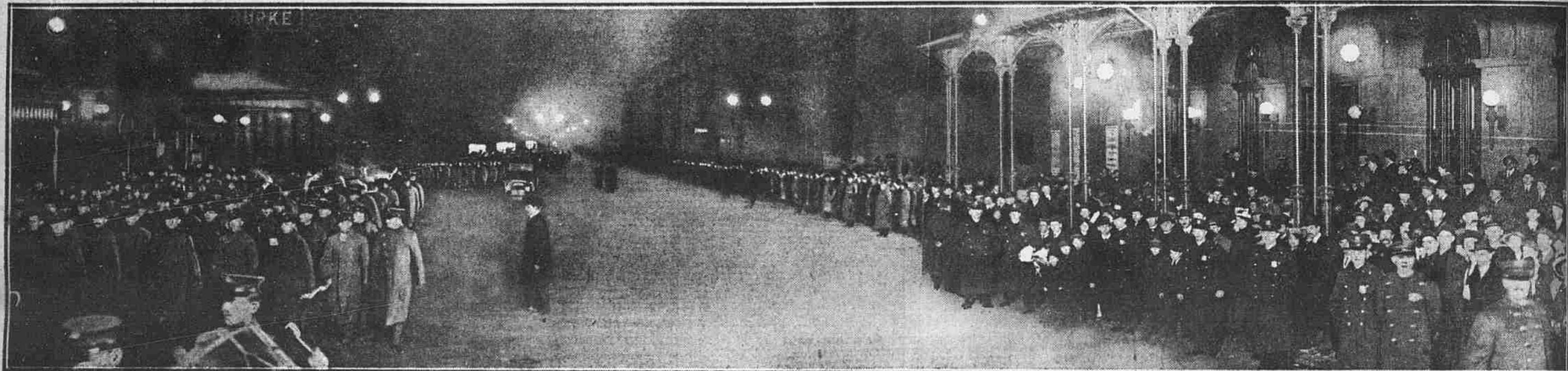
BIG MOTORTRUCK STALLED IN EFFORT TO NAVIGATE DELAWARE AVENUE
The effect of the overflow of the river into the business section at Arch street yesterday is illustrated here. The truck, after whirring vainly on its heavy wheels for a while, gave up the fight, and the driver had to wade to a dry spot to call for help in getting out.



Lightweight passengers could be ferried across submerged streets by arm and shoulder service at Gloucester.



THEY TOOK TO TREES AND POLES TO ESCAPE FLOOD AT GLOUCESTER
The Jersey town was taken by surprise when the Delaware River came floating in at its doors and citizens found themselves immured unless they owned high rubber boots or boats. This picture shows a group fording a street crossing in the residence district.



GREAT PARADE ON BROAD STREET LAST NIGHT AS VIEWED FROM CITY HALL TOWARD SPRUCE STREET



LEAGUE ISLAND'S SAILORS TURN OUT IN DEMAND FOR FASTER TRANSIT



OVERFLOW THROUG MASSED IN FRONT OF ACADEMY OF MUSIC AND SEEKING ADMITTANCE IN VAIN



GRAND MARSHAL HARVEY A. ZAHN
Chief attraction of the Navy Yard, who led last night's parade.