

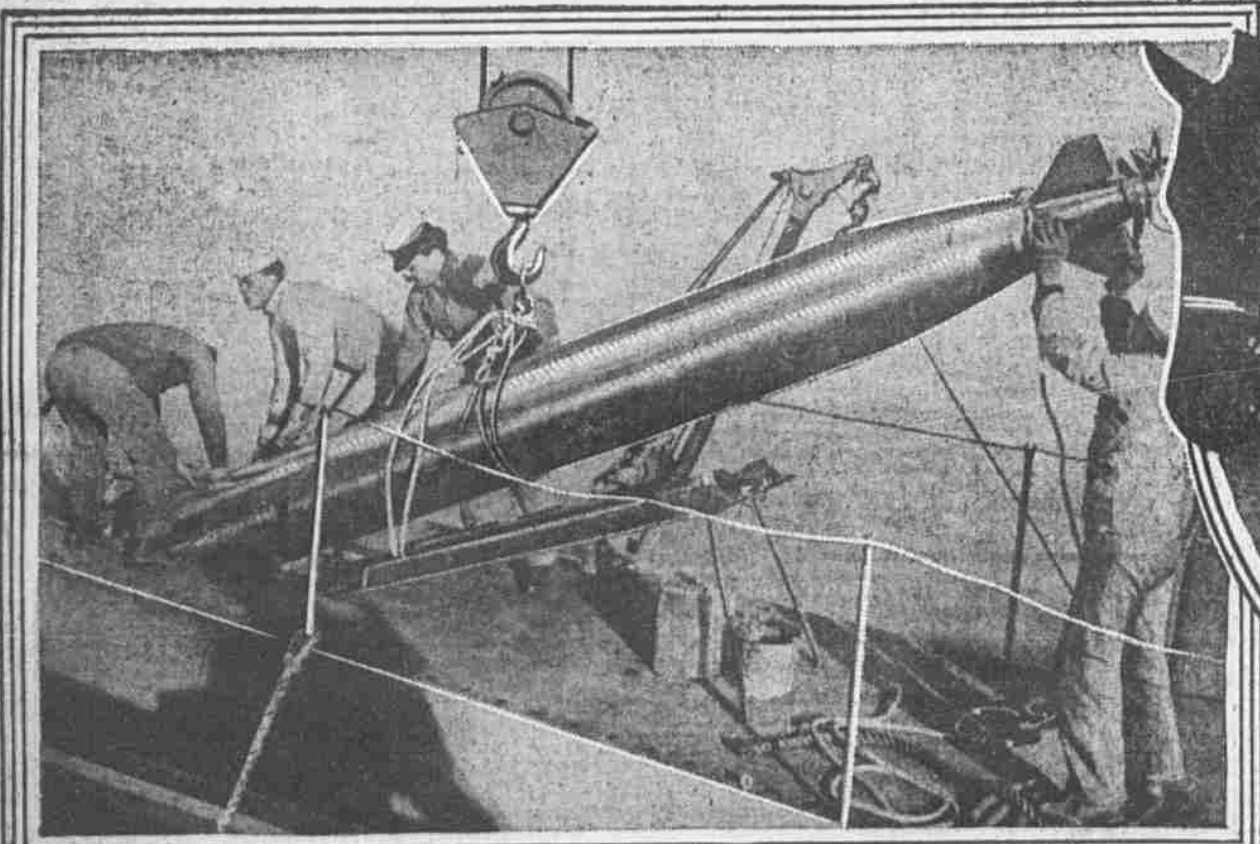
PERSONS AND EVENTS IN THE NEWS OF THE DAY AS PORTRAYED BY THE QUICK EYE OF THE CAMERA



"FIRED" BY CZAR FOR BEING TWO DAYS' LATE. The portrait is that of General Rennenkamp.



GERMAN PRISON CAMP THICK WITH PRISONERS. An idea of the general discomfort and overcrowding that is the lot of prisoners of war may be gathered from this photograph. The captured soldiers are shown here in dense masses with scarcely room to sleep in comfort or exercise.



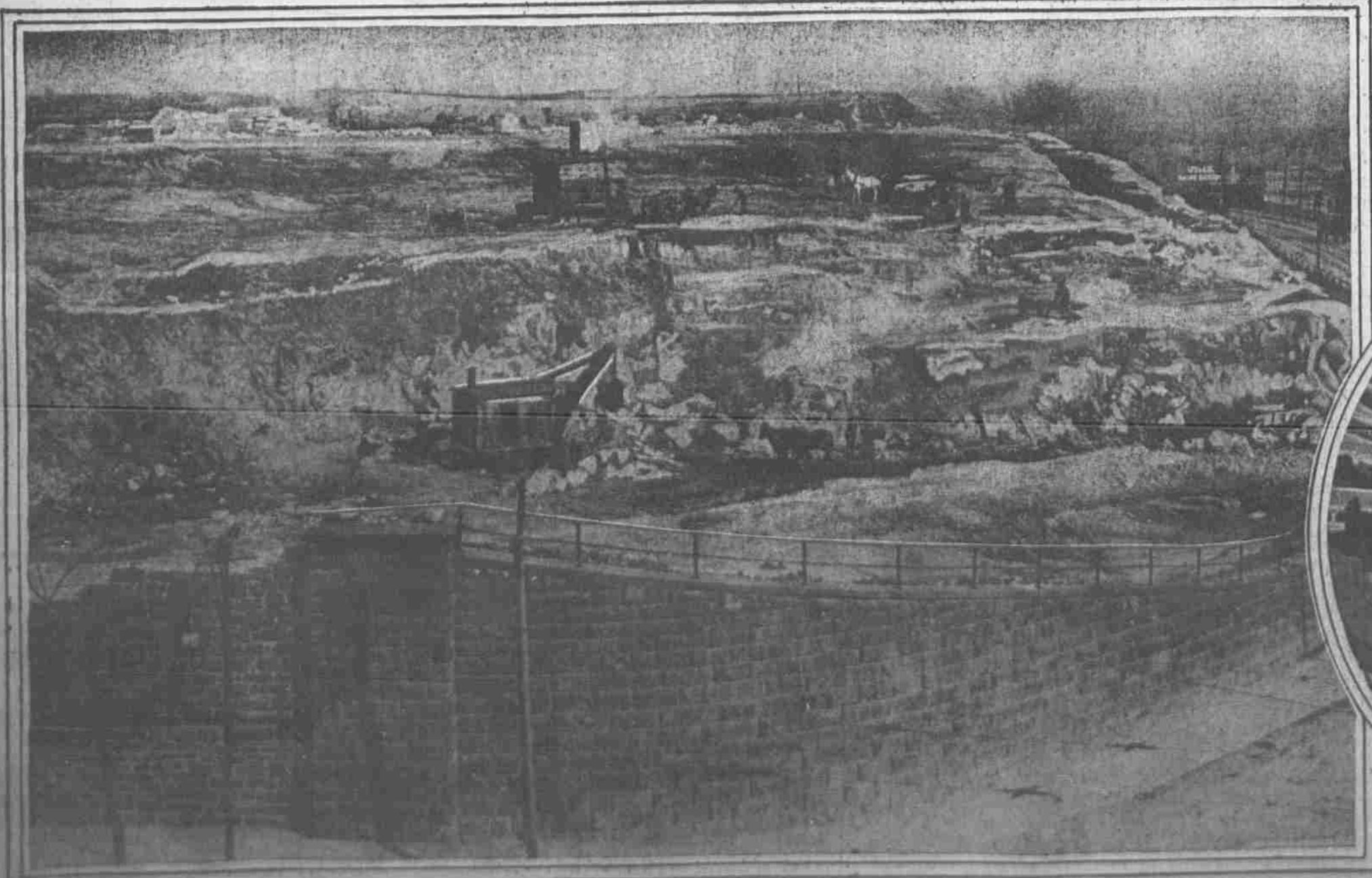
A TORPEDO LIKE THIS COSTS THE UNITED STATES \$7500 TO FIRE. This picture is of interest just now because of the part played by torpedoes in the present war and the discussion on the preparedness of American coast defenses.



KING GEORGE GOES TO THE FIRING LINE



DECLINES PLACE IN WILSON CABINET. New photograph of Representative A. Mitchell Palmer, who is to be head dispenser of State patronage.



A PHILADELPHIA DREAM AND THE PROGRESS BEING MADE TOWARD ITS REALIZATION. On the left is shown the work so far accomplished toward leveling the site for the new Municipal Art Gallery to stand at the head of the Parkway when completed. This high hill at 7th and Spring Garden streets has made much tedious labor necessary. It is gradually being cut down a terrace at a time, despite lack of funds and needed appropriations. On the right is a model of the new building as it will look when completed. It will rise 50 feet into the air and will serve as a beautiful and dignified crown to the great thoroughfare that is to extend from City Hall. The site as it exists at present is not pretty to look at, but much time is necessary to effect the desired changes, and it is promised that things will look different a year hence.