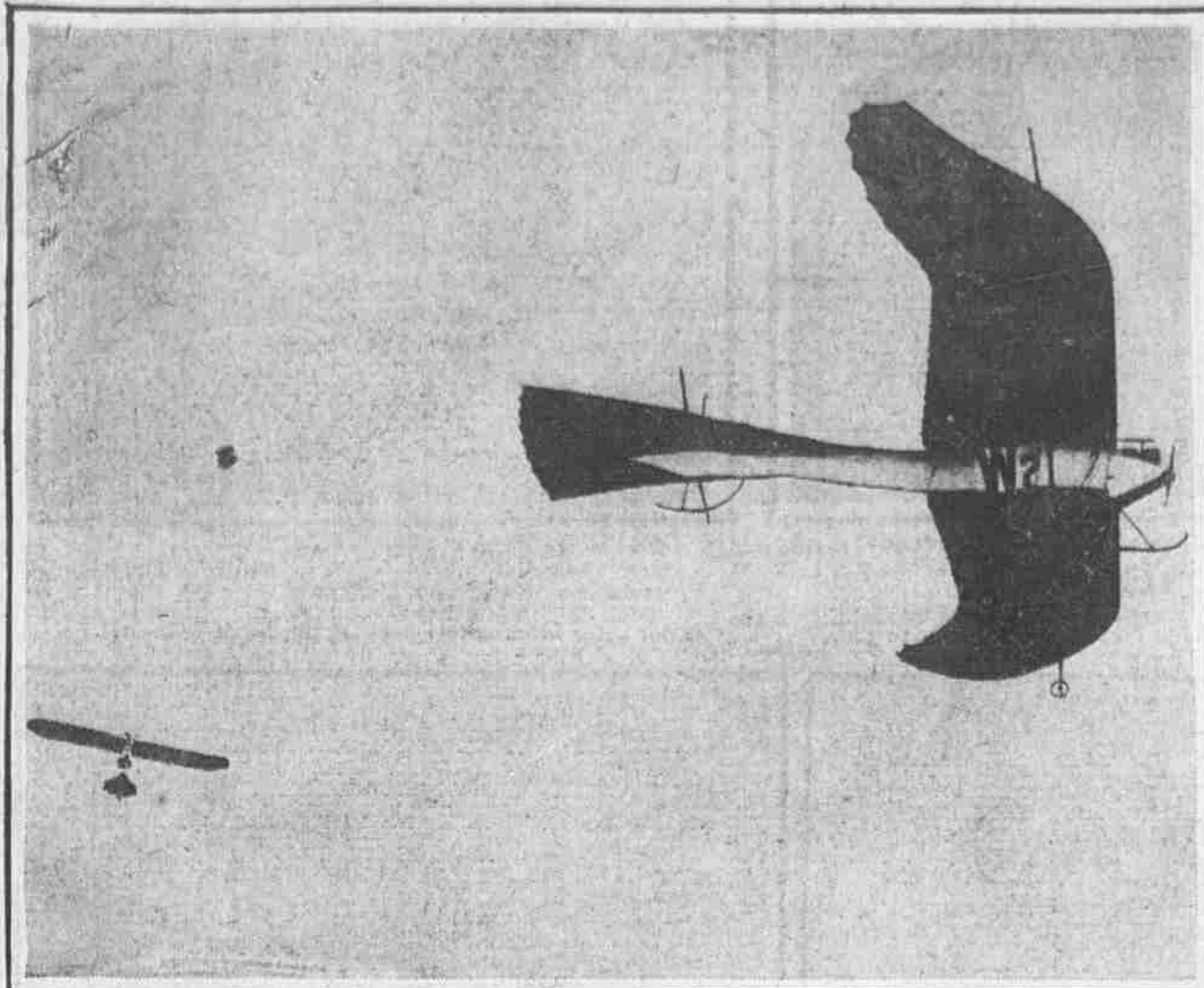


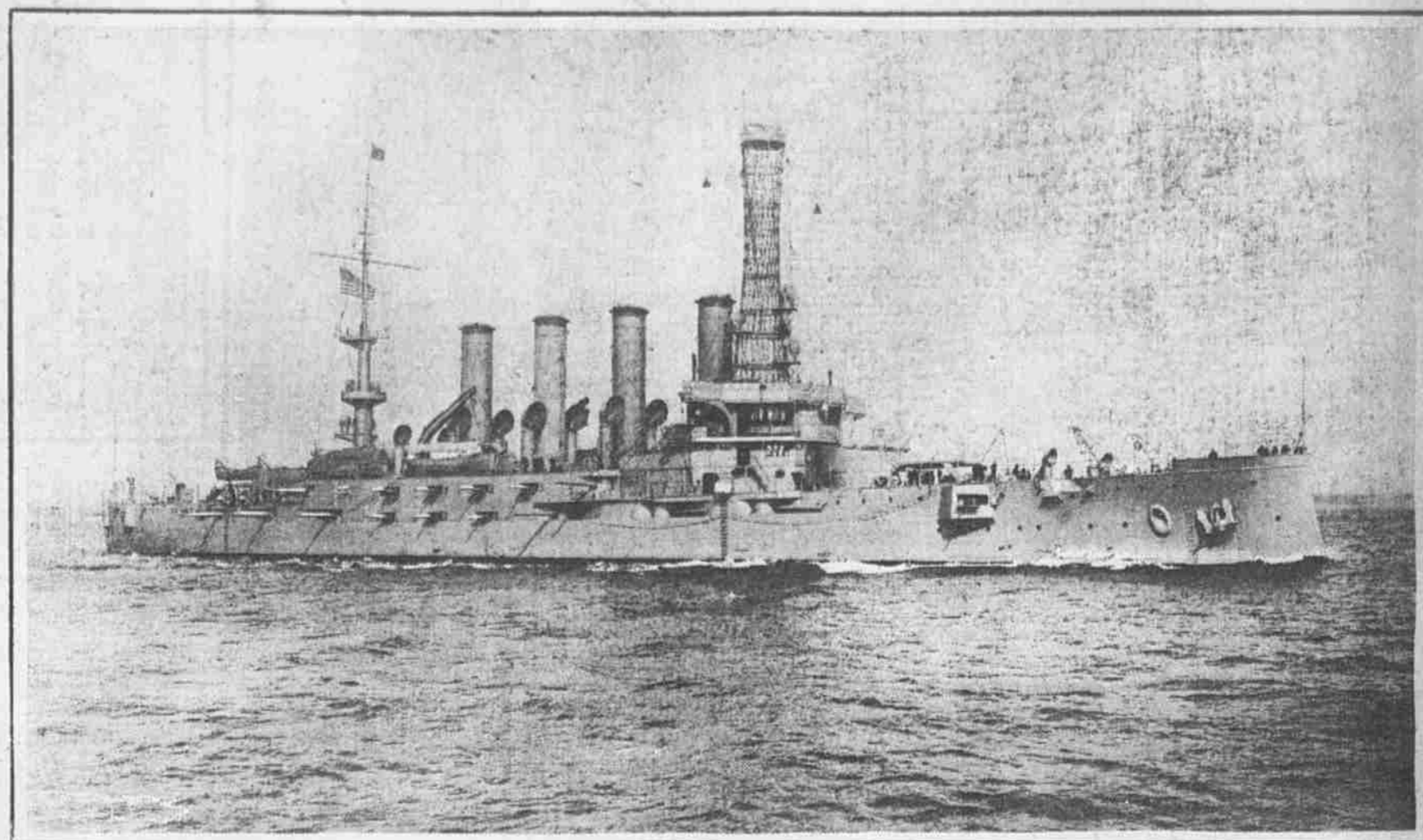
U. S. Marines Fired Upon by Turks — Wilson Foresees New Era Commuters Fight Rate Increase — "Slush Funds" Anger Grange

NEWS OF THE DAY FROM THE PICTORIAL VIEWPOINT



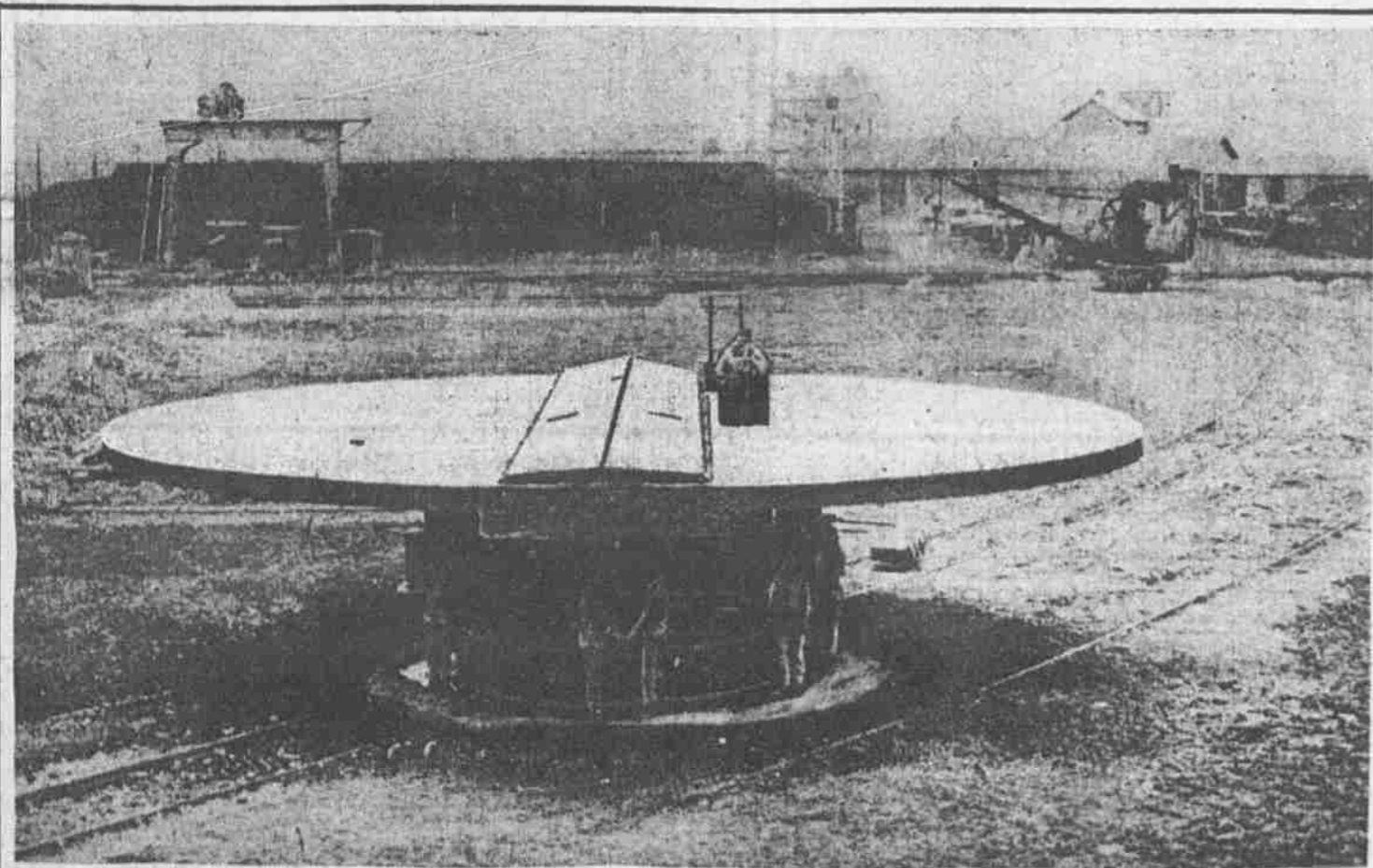
FAMOUS GERMAN TAUBE AEROPLANE IN FLIGHT

"Taube" is the German word for dove. It is these bird-like monoplanes which the Kaiser's air-men have used so effectively in scouting and dropping bombs on cities. They are of light construction and very fast. Higher in the air is seen another German machine of a heavier type.



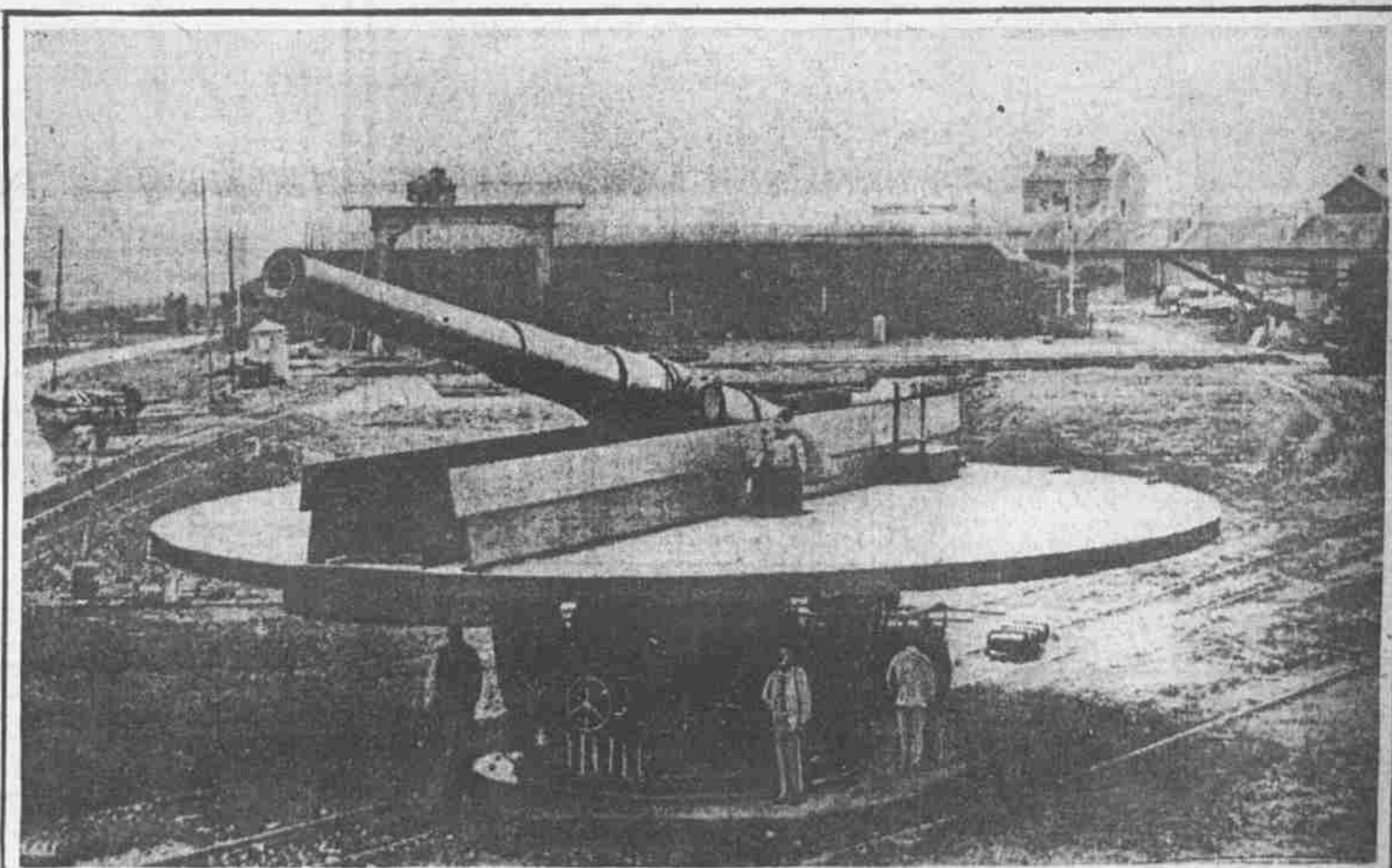
UNITED STATES CRUISER TENNESSEE, WHOSE LAUNCH WAS FIRED ON BY TURKS IN VURLA HARBOR

Reports say the Tennessee dispatched a force to land at Smyrna to ask permission of the Turkish authorities before entering the harbor. The launch was forced to return to the ship when the forts opened fire. The cruiser had been ordered to Smyrna to protect Christians who are said to have been threatened by the Turks. The Tennessee is one of the heavy cruisers of the American navy and was built in 1904.



HEAVY DISAPPEARING GUN OF MOBILE TYPE BELONGING TO FRENCH ARMY

All that an enemy's air scout can see from above is a harmless-looking metal platform. The gunners stand safely sheltered beneath, with hands on levers ready for the signal. The load is ready and the range has been found from the little conning tower on top. The operators wait till the scout has passed and then quickly spring to their places.



Presto! The top doors in the platform fly open and up looms the giant gun ready to pour out its terrible charge. The shell fired, the recoil forces the gun back on its huge hinges, the doors fall over the opening again, and nothing is in sight but the flat platform. The French had these guns ready for the Germans on their fierce drive on Paris.



GUN CARRIAGE BORNE BY MULES

This British-Indian battery is remarkable for its complete equipment and the wonderful way in which it is able to traverse hilly districts and rough country where other howitzers would be useless. The photograph shows sections of gun carriage packed on mules negotiating rough country. These easily-moved batteries were brought from India, where the British in times past, have found them particularly useful in pursuing hostile tribes of the hills and mountains in the north country.



OBSERVATION POST IN TREE TOP

In the fighting around Dismade the resourceful Belgian troops built this novel platform for observing the movements of the enemy. An elevated point like this was particularly advantageous.