

MAN'S CHIEFSTAFF.

PROSPERITY ALWAYS FORESHADOWED BY BIG WHEAT CROPS.

How the Wheat Raising Districts of the World are Distributed over the Earth's Surface and How it is Raised in Different Lands.



HEAT is produced in more countries and climates than any other food grain, and American wheat has long been a leading rival in the markets of western Europe...

The American farmer had already had puzzling experience with wheat. Down to 1840 that cereal had followed the usual law of being cheap when the crop was large, and vice versa...

WHEAT CROPS OF THE WORLD. (The wheat districts are indicated by a W.) In 1857 the range was \$1.25 to \$1.40, and in 1858 \$1.20 to \$1.30...

INDIA, for the purposes of this inquiry, means British India, and in that dependency the British have constructed some 10,000 miles of railway and many canals...

Nothing Like the Dinner Horn. Japanese guests melodiously summon guests to dinner, and are considered a great improvement upon the dinner bell...

Center of Our Universe. Considering the fact that many astronomers are inclined to regard Alcione the chief star of the Pleiades as the center about which the universe revolves...

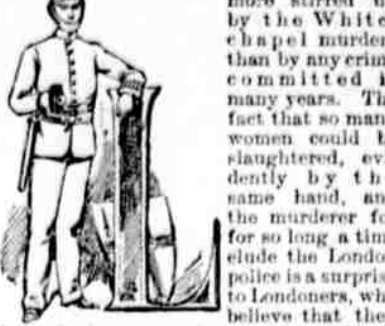
Site of the Waist. Statistics furnished by the London vest and corset makers show that the average size of the female vest wearing waists has decreased two inches in the last twenty-five years...

Wheat in Argentina. The Argentine Republic is a new exporter of wheat, though Chili has been known in that line to American buyers...

THE POLICE OF LONDON.

SCOTLAND YARD, THE ORGANIZATION'S HEADQUARTERS.

Some Facts in Regard to the Terrible Murders in Whitechapel, One of the Lowest Slums in the Great Metropolis of the World.



LONDON has been more stirred up by the murder of a woman than by any crime committed in many years. The fact that the murderer could be slaughtered, evidently by the same hand...

WHAT HARVEST IN INDIA. Incidentally it may be well to contrast the wheat with the very limited area for corn (maize) in all Europe...

THE DETECTIVE FORCE OF LONDON. The detective force of London consists of 400 men in summer and 200 in winter. They are chosen from the police for their ingenuity in tracking criminals...

THE AMERICAN BANKERS. The American Bankers' association has just been holding its annual meeting in Cincinnati, and very weighty were the discussions that were carried on...

THE CHINESE IN CALIFORNIA. Speaking of the variety of work done here by the Chinese, they are employed in many of the factories. They are the porters and cleaners of the city to a large extent...

THE CHINESE CULTURE IN FLORIDA. It is probably that the cultivation of the coconut for profit will always, in Florida, be confined to the region on the Keys and mainland south of the Caloosahatchee river...

A HINT FOR CHIEFS. Nothing could be better than the association recently formed in Philadelphia called the Open Space association...

A KING AND HIS WIFE. De Lannoy, Italian ambassador at Berlin, served for a time as the private secretary to Charles Albert, king of Sardinia...

A BIRD MEMORY. When a Cincinnati husband was asked in court how he dragged his wife out of bed by the hair on the day of her death...

A GYPSY COLT. A Gypsy colt has been sold for \$3,000, the highest price ever paid for a draught horse.

ALL THE WAY FROM PERSIA.

Haji Hassan Koli Khan, Minister to the United States.

Haji Hassan Koli Khan, minister plenipotentiary and envoy extraordinary from Persia to the United States...

For twenty years he has been connected with the Persian foreign office, and for three years was consul general to Bombay.

He speaks very little English, but is fluent in French, which he learned in India. The picture given in this sketch, taken by Merritt & Van Wagner...

His resignation from the Executive Board of 400 men in summer and 200 in winter. They are chosen from the police for their ingenuity in tracking criminals...

THE AMERICAN BANKERS. The American Bankers' association has just been holding its annual meeting in Cincinnati, and very weighty were the discussions that were carried on...

THE CHINESE IN CALIFORNIA. Speaking of the variety of work done here by the Chinese, they are employed in many of the factories. They are the porters and cleaners of the city to a large extent...

THE CHINESE CULTURE IN FLORIDA. It is probably that the cultivation of the coconut for profit will always, in Florida, be confined to the region on the Keys and mainland south of the Caloosahatchee river...

A HINT FOR CHIEFS. Nothing could be better than the association recently formed in Philadelphia called the Open Space association...

A KING AND HIS WIFE. De Lannoy, Italian ambassador at Berlin, served for a time as the private secretary to Charles Albert, king of Sardinia...

A BIRD MEMORY. When a Cincinnati husband was asked in court how he dragged his wife out of bed by the hair on the day of her death...

A GYPSY COLT. A Gypsy colt has been sold for \$3,000, the highest price ever paid for a draught horse.

FEEDING VERSUS FIGHTING. What it Means to Keep the Army's Immense Stomach Filled, the Only Way...

FEEDING VERSUS FIGHTING. "There is one feature in active military operations," said an old Union veteran in the course of a long war reminiscence...

FEEDING VERSUS FIGHTING.

What it Means to Keep the Army's Immense Stomach Filled, the Only Way...

CHATTANOOGA, Tenn., June 27, 1862. Swift's Specific Co., Atlanta, Ga. Gentlemen: I was a great sufferer from rheumatism for two years...

WINE AND LIQUOR. OUR OWN BRAND. SPECIAL. The only train which runs daily. On Sunday the train runs west by way of Columbia.

WINE AND LIQUOR. OUR OWN BRAND. SPECIAL. The only train which runs daily. On Sunday the train runs west by way of Columbia.

WINE AND LIQUOR. OUR OWN BRAND. SPECIAL. The only train which runs daily. On Sunday the train runs west by way of Columbia.

WINE AND LIQUOR. OUR OWN BRAND. SPECIAL. The only train which runs daily. On Sunday the train runs west by way of Columbia.

WINE AND LIQUOR. OUR OWN BRAND. SPECIAL. The only train which runs daily. On Sunday the train runs west by way of Columbia.

WINE AND LIQUOR. OUR OWN BRAND. SPECIAL. The only train which runs daily. On Sunday the train runs west by way of Columbia.

WINE AND LIQUOR. OUR OWN BRAND. SPECIAL. The only train which runs daily. On Sunday the train runs west by way of Columbia.

WINE AND LIQUOR. OUR OWN BRAND. SPECIAL. The only train which runs daily. On Sunday the train runs west by way of Columbia.

WINE AND LIQUOR. OUR OWN BRAND. SPECIAL. The only train which runs daily. On Sunday the train runs west by way of Columbia.

WINE AND LIQUOR. OUR OWN BRAND. SPECIAL. The only train which runs daily. On Sunday the train runs west by way of Columbia.

WINE AND LIQUOR. OUR OWN BRAND. SPECIAL. The only train which runs daily. On Sunday the train runs west by way of Columbia.

WINE AND LIQUOR. OUR OWN BRAND. SPECIAL. The only train which runs daily. On Sunday the train runs west by way of Columbia.

TRAVELERS GUIDE.

READING & COLUMBIA R. R. ARRANGEMENT OF PASSENGER TRAINS ON AND AFTER SUNDAY, MAY 13, 1888.

Table with columns for Northward, Southward, and specific train routes like Quaryville, Reading, etc.

Table with columns for Westward, Eastward, and specific train routes like Philadelphia, Harrisburg, etc.

Table with columns for Westward, Eastward, and specific train routes like Philadelphia, Harrisburg, etc.

Table with columns for Westward, Eastward, and specific train routes like Philadelphia, Harrisburg, etc.

Table with columns for Westward, Eastward, and specific train routes like Philadelphia, Harrisburg, etc.

Table with columns for Westward, Eastward, and specific train routes like Philadelphia, Harrisburg, etc.

Table with columns for Westward, Eastward, and specific train routes like Philadelphia, Harrisburg, etc.

Table with columns for Westward, Eastward, and specific train routes like Philadelphia, Harrisburg, etc.

Table with columns for Westward, Eastward, and specific train routes like Philadelphia, Harrisburg, etc.

Table with columns for Westward, Eastward, and specific train routes like Philadelphia, Harrisburg, etc.

Table with columns for Westward, Eastward, and specific train routes like Philadelphia, Harrisburg, etc.

Table with columns for Westward, Eastward, and specific train routes like Philadelphia, Harrisburg, etc.

Table with columns for Westward, Eastward, and specific train routes like Philadelphia, Harrisburg, etc.

TRAVELERS GUIDE.

READING & COLUMBIA R. R. ARRANGEMENT OF PASSENGER TRAINS ON AND AFTER SUNDAY, MAY 13, 1888.

Table with columns for Northward, Southward, and specific train routes like Quaryville, Reading, etc.

Table with columns for Westward, Eastward, and specific train routes like Philadelphia, Harrisburg, etc.

Table with columns for Westward, Eastward, and specific train routes like Philadelphia, Harrisburg, etc.

Table with columns for Westward, Eastward, and specific train routes like Philadelphia, Harrisburg, etc.

Table with columns for Westward, Eastward, and specific train routes like Philadelphia, Harrisburg, etc.

Table with columns for Westward, Eastward, and specific train routes like Philadelphia, Harrisburg, etc.

Table with columns for Westward, Eastward, and specific train routes like Philadelphia, Harrisburg, etc.

Table with columns for Westward, Eastward, and specific train routes like Philadelphia, Harrisburg, etc.

Table with columns for Westward, Eastward, and specific train routes like Philadelphia, Harrisburg, etc.

Table with columns for Westward, Eastward, and specific train routes like Philadelphia, Harrisburg, etc.

Table with columns for Westward, Eastward, and specific train routes like Philadelphia, Harrisburg, etc.

Table with columns for Westward, Eastward, and specific train routes like Philadelphia, Harrisburg, etc.

Table with columns for Westward, Eastward, and specific train routes like Philadelphia, Harrisburg, etc.