

**TAKE NOTICE**

THE PENNSYLVANIA GAME COMMISSION, at a regular meeting held the seventh day of July, 1937, by resolution lawfully adopted pursuant to Sections 501 and 601 of an Act of Assembly approved June 3, 1937, and in exercise of powers conferred thereby, fixed the open seasons and bag and possession limits on certain game animals, game birds, and fur-bearing animals, during the fall of 1937 and spring of 1938, and closed, or declared open, to the hunting or trapping of certain game birds, game animals, and fur-bearing animals throughout the entire Commonwealth, or parts thereof, as below indicated:

**OPEN SEASONS:**  
The open season on Ruffed Grouse, Quail (Bobwhite, Gambel, and Valley) and Hares (Snowshoe or Varying), November 1 to November 15.

Wild Turkeys (certain counties, closed) Ringneck Pheasants (males only), Blackbirds, Rabbits, (Cottontail), Squirrels, (Gray, Black and Fox), November 1 to November 25.  
Red Squirrels, November 1 to August 15, 1938; Woodchucks (commonly called Groundhogs), November 1 to September 15, 1938; Raccoons (hunting), November 1 to December 31; Raccoons, trapping only in certain counties, December 1 to December 31; Bear, over one year old, November 15 to November 20; Deer, Antlerless, in certain counties, November 25 to November 27; Deer, Male, with two or more points to one antler, November 29 to December 11.

Minks, Opossums, Skunks, November 15 to February 28, 1938; Muskrats, (by trapping only) December 1 to February 28, 1938; Beavers, (in certain counties, February 15 to February 28.

**BAG LIMITS:**  
Daily and Season Bag Limits (the first number is the daily bag, the second the season limit): Ruffed Grouse, 2 and 3; Quail (Bobwhite, Gambel and Valley) 4 and 12; Hares (Snowshoe or Varying), 2 and 8; Wild Turkey, (certain counties closed) 1 and 1; Ringneck Pheasants (males only), 2 and 8; Rabbits (Cottontail), 4 and 20; Squirrels, Gray, Black and Fox, (combined kinds), 6 and 20; Raccoons (all counties by individual or hunting party) 2 and 10; Raccoons, trapping only (in certain counties) season limit, 10; Bear, over one year old, by individual 1 and 1, by hunting party of six or more, 2 and 2; Deer, Antlerless, in certain counties, 1 and 1; Deer, Male, with two or more points to one antler, 1 and 1; Male Deer, as above, by hunting party of six or more, 6 and 6; Blackbirds, Red Squirrels and Woodchucks, daily and season bag unlimited.

Minks, Opossums, Skunks and Muskrats by trapping only, daily and season bag unlimited; Beavers (in certain counties), season limit 3.  
And did by said resolution adopt the following special regulations applying to Centre County: Opened to trapping of Raccoons from December 1 to December 31; Open season declared in the Townships of Rush, Taylor, Worth, Half Moon, Huston, Union, Boggs, Snowshoe, Burnside, and Curtin, for the killing of Antlerless Deer under authority of a Special Deer Permit (999 Permits to be issued), costing \$2.00, and obtainable from the Game Commission, Harrisburg. Open season for trapping Beavers from February 15 to February 28, 1938.

And did by the said resolution declare that on November 1 no trapping shall be permitted before 9 A. M., which shall also be the opening hour on the first day of the seasons for male deer and for trapping raccoons and fur-bearing animals; and that the possession limit for small upland game shall be the legal bag for two days.  
The Commission also by the same resolution closed the season throughout the Commonwealth on Reeves Pheasants, Hungarian and Chukar Partridges, Doves, Elk, Cub Bears and Otters.  
Said resolution is on file in the Office of the Commission and notice thereof is hereby published in summarized form in accordance with the provisions of the Act above cited. Consult your hunter's license or write the Game Commission at Harrisburg for more detailed information concerning these regulations, full list of counties where special regulations apply, and Federal seasons on migratory game birds.

SETH GORDON,  
Executive Director.

**TRANSFERS OF REAL ESTATE**

George E. King to Lee E. Musser, of Spring Mills, tract in Penn twp.; \$15.  
W. H. Baird et ux, to Claude Williams, of Ferguson twp.; tract in Pottey twp.; \$3,000.  
Catherine P. Reed et ux, to Loretta Way Flitts, of State College, tract in State College; \$960.  
Wm. P. Markle, et ux, to West Penn Power Co., of Pittsburgh, tract in State College; \$7,490.  
Maurice Baum, et ux, to Reinita E. Gardner, of Hyattsville, Md., tract in State College; \$19,000.

**30 Years Ago**

Items of news which interested those of a generation ago, taken from the files of The Reporter, year 1907.

OCTOBER 24, 1907.—Talk about the "poor farmer" when hay is selling in Chicago for \$21.00 a ton!

Station Agent W. F. Bradford beginning of this week went to West Chester as a witness in a suit for damages brought by a cattle shipper.

One of the most enjoyable reunions of the veterans of the Civil War was held at Boalsburg, Saturday. It was the greatest day for Company H since the days of its home-coming in 1861, after their three months' enlistment had been served. . . Col. D. F. Fortney made an address of some length and what he said was of special interest. He referred to the incidents of the enlisting of the men in Company H; the intense excitement throughout the whole country; the scenes on the departure of the boys; the loyalty of the women, mothers, sisters and sweethearts; the reception in Johnston's woods. . . The members of Co. H who attended the reunion, the first mentioned being the only one now a resident of Boalsburg, have their names appended: John Hook, Boalsburg; C. L. Greeno, Cincinnati, O.; S. H. Williams, Bellefonte; W. B. Harpster, Philipsburg; Benjamin F. Minnick, Clearfield; Andy Kreamer, Hubersburg; W. H. Musser, Bellefonte; Armstrong Jacobs, Howard; Alfred Johnstonbaugh, Bellefonte; Charles Eckenroth, Bellefonte; Wm. Reed, Bellefonte; Philip Wert, Houersville; Griffith Lytle, Downs, Kas.

Dr. and Mrs. C. W. Hosterman on Tuesday morning went to Lancaster and will be absent until November 4. Tuesday morning Capt. George M. Boal and Col. John W. Stuart, postmasters at Centre Hall and State College, respectively, started to Washington, D. C., to attend a convention of postmasters being held in the national capital.

(The Reporter refers to a new teachers' minimum salary law which increases the minimum salary from \$35 to \$40 and \$50, according to their qualifications and term of service.)

**CASES FOR GRAND JURY TODAY**

The following domestic relations and summary convictions cases are scheduled for the Grand Jury today (Thursday):  
D. H. Conrad, violation vehicular code (V. V. C.); H. E. Drexel, V. V. C.; Charles Oncea, threats and abuse; Charles Oncea, desertion and non-support; R. Roy Williams, desertion and non-support; Ira E. Jones, non-support; William Kerko, surety of peace; Mike Blaszk, threats and surety of peace; Earl Beckwith, threats and surety of peace.

The potato production in Pennsylvania this year is estimated at 26,390,000 bushels, compared with 26,265,000 bushels last year and with the 1931-35 average of 26,884,000 bushels. The state apple crop is estimated at 15,912,000 bushels, compared with 8,405,000 bushels last year.

**Dick's Toggery**

Monument Sq.  
LEWISTOWN, PA.

GIVING ITS PATRONS  
GREATEST VALUE and  
FINER QUALITY IN  
CLOTHING

**\$22.50**

One Price Only

- SHIRTS ..... \$1.65-\$1.95
- TIES ..... 50c-\$1.00
- HOSE ..... 35c- 50c
- HATS ..... \$2.95-\$3.45
- SLACKS ..... \$2.95-\$5.95

**DICK'S TOGGERY**

**PASTEURIZED DAIRY PRODUCTS**

—OUR OWN ICE CREAM—  
When in need of MILK, CREAM, BUTTERMILK, CHOCOLATE MILK, and ICE—  
Phone 2484  
**GARBRICK'S DAIRY**  
CENTRE HALL, PA.

**HOME FOR SALE**—Double house 8 rooms, with modern conveniences; known as the Philip Meyer home and located on Main street in center of town. Inquire of Warren A. Homan, Centre Hall. 374.

**GUNSMITHING.**—Restocking, rebuilding. Can make any part. Guns for sale or trade.—BELL "THE GUNSMAN," 427 Logan street, Lewistown, Pa. x42

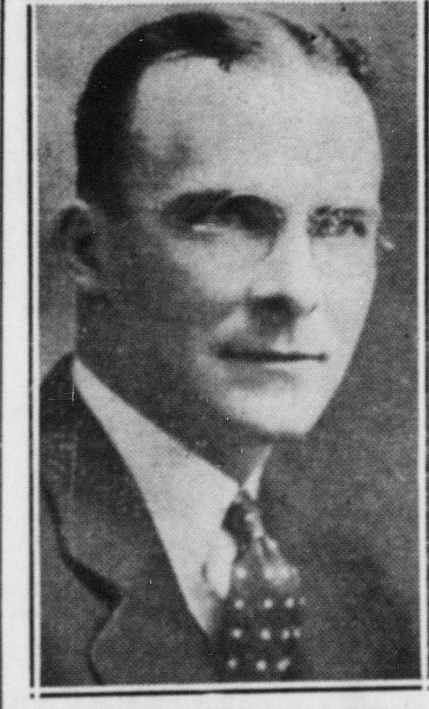
**REGISTER'S NOTICE.**

Notice is hereby given to all persons interested that the following inventories of the goods and chattels set apart to widows in accordance with the provisions of the Fiduciaries Act of 1917 have been confirmed nisi by the Court and if no exceptions are filed on or about the first day of next term the same will be confirmed absolute:  
1. The inventory and appraisal of the personal property of George W. Beezer, late of Spring Township, deceased, was set apart to his widow, Catharine E. Beezer.  
2. The inventory and appraisal of the personal property of Joseph Massey, late of Bellefonte Borough, was set apart to his widow, Mrs. Lulu Massey.  
JOHN L. WETZLER,  
Register of Wills  
of Centre County

**WHEN IN NEED OF Planing Mill Work**

of any kind,  
**LUMBER, ROOFING, Nails, All Kinds Building Material,**  
CALL AT—  
**Garrett's Planing Mill**  
GOOD MATERIAL AND HONEST PRICES  
Rebersburg, Pa.  
Phone 16R42

**To RE-ELECT an Efficient, Capable and Firm DISTRICT ATTORNEY of CENTRE COUNTY**



**Mark an X**  
as follows:

**PHILIP H. JOHNSTON X**

**AT THE ELECTION**

**TUESDAY, NOVEMBER 2, 1937**

**WITH FARES SO LOW and FALL so beautiful**  
Greyhound is first choice for any trip. Only 1/3 the cost of driving an automobile. No extra fare for the extra comfort offered by Greyhound.  
Round Trip  
SUNBURY ..... \$2.70  
TYRONE ..... 2.00  
CHICAGO, ILL. .... 18.10  
JOHNSTOWN ..... \$3.90  
SCRANTON ..... 5.25  
GREYHOUND Lines  
Brooks Service Sta., CENTRE HALL, PA.  
Phone 14R

**WEIS PURE FOOD STORES**

Fred Luse, Manager CENTRE HALL

WEIS QUALITY CATSUP 14-oz bot .....2 for 25c	PRUNES 40-50 size .....2 lbs 15c
CLAPP'S BABY FOOD 3 cans .....23c	Weis. Qual. PEANUT BUTTER 1 lb jar .....2 for 29c
DEL-MONTE GOLDEN BANTAM CORN No. 2 can ..... 2 for 25c	KELLOG or POST TOASTIES CORN FLAKES Package ..... 6c
CAMPBELL'S PORK & BEANS 16-oz can .....3 for 23c	RITZ CRACKERS Lb pkg ..... 21c
WOODBURY'S TOILET SOAP 3 bars ..... 25c	PILLSBURY FLOUR 24-lb Sack .....\$1.07
HUSKIES 10-oz pkg .....2 pkgs 21c	<b>FISH &amp; OYSTERS</b> FRIDAY AND SATURDAY
NARCO DOG FOOD 3 cans ..... 20c	
DROMEDARY CRANBERRY SAUCE 17-oz can .....2 for 27c	

**"You'll be ahead with a CHEVROLET!"**  
You'll be ahead in style—beauty—smartness—with this bigger-looking, better-looking low-priced car!

"You'll be ahead with a Chevrolet!" That's the enthusiastic verdict of more and more people as they see, drive and compare the new 1938 cars. And we believe it will be your verdict, too, when you consider all the exclusive extra values this beautiful new Chevrolet brings to you.

You'll be ahead in style—comfort—safety. And you'll also be ahead in all-round economy, for Chevrolet's famous Valve-in-Head Engine uses less gas and oil, and operates with a minimum of upkeep. See your nearest Chevrolet dealer today for a thorough demonstration of Chevrolet superiority.

CHEVROLET MOTOR DIVISION, General Motors Sales Corporation, DETROIT, MICHIGAN. General Motors Installation Plan—monthly payments to suit your purse. A General Motors Value.

**MODERN-MODE STYLING**  
**PERFECTED HYDRAULIC BRAKES**  
**GENUINE KNEE-ACTION\***  
**ALL-SILENT ALL-STEEL BODIES**  
**VALVE-IN-HEAD ENGINE**  
**FISHER NO DRAFT VENTILATION**

**CHEVROLET THE CAR THAT IS COMPLETE**  
FOR 27 YEARS THE SYMBOL OF SAVINGS

**MILLER MOTOR CO. CENTRE HALL, PA.**

**EVENINGS after seven SUNDAY all the day**

Lowest rates are in effect on calls of 42 miles or more every night after seven and all day Sunday!

Somewhere there's some one who'd like to hear your voice.

**Make that call tonight!**

THE BELL TELEPHONE COMPANY OF PENNSYLVANIA