

# DAM PROJECTS ATTRACT TOURISTS

## Huge Artificial Lake at Boulder Dam Proves Magnet; Uncle Sam to Capitalize on It; Bonneville Dam Is Inspiring Scene.

By WILLIAM C. UTLEY

NOT only do some of the vast government dam projects provide subjects for controversy in political circles, irrigation for desert wastes and electric power for vast producing areas. They are assuming a new importance in the lives of our people, especially at this time of year. They are becoming major attractions for summer vacationers.

Mr. Average American, with two weeks out of the year for his vacation, likes to cram just as much into that fortnight as he possibly can. His mountains must be gigantic, his vistas colossal, his waterfalls terrific and his automobile trips long and rapid. He is usually somewhat impressed by the Grand Canyon.

Small wonder then, that sights such as Boulder dam, the Grand Coulee and the Bonneville dam projects interest him. They are big, scenic and wonderful. And because they are government projects they have that patriotic appeal which is characteristically American.

The United States government hardly planned Boulder dam as a summer recreation project, and it is not yet as well equipped to entertain the thousands of tourists now visiting the dam as it will be in the near future. But in great throngs the vacationers come and after their souls have been satisfied with the enormity of it all they find they can have one whale of a time in, on and around Lake Mead, above the dam and the largest man-made body of water on earth.

### Will Develop Appeal.

After all, swimming in the heart of a desert is a thrill that should appeal to the American temperament. The clear blue water in the shadow of the mountain peaks and the great dam is also a magnificent setting for boating, fishing and aquaplaning.

In an effort to encourage the movement already started the government has ordered the national parks service, together with the bureau of reclamation, to launch a program designed to make the Boulder dam region more attractive than ever. First of all a number of public bath houses were built on the beach, which is artificial like the lake and a short distance from Boulder City, home of the workers on the project. Floating rafts have been provided, and life guards sit upon high seats to guard the safety of bathers, just as if this might be Coney Island.

Excursions over the surrounding area by air are popular, too, with the vacationers. There is a government-built airport at Boulder City from which several planes take off daily on these trips. Planes of the most modern type, equipped with two way wireless, wing the visitors



A picturesque scene against the morning sky of America's magnificent Northwest are these Bonneville dam workers.

way of night life out here—there is only one movie house in Boulder City—there are enough natural curiosities and marvels to make the visitor lose his taste for night life. Within 200 miles are, in addition to the beautiful canyons mentioned above, the Joshua Tree National forest, the Painted Desert, Petrified forests, the Mad Valley of Fire, Eldorado canyon, and many other sights, including many Indian settlements. Nature in remarkable mood exists up and down as well as across. You can descend to 360 feet below sea level in Death Valley and, if you are agile enough, you can get up 12,500 feet on San Francisco peak.

The government is stocking Lake Mead with bass, and although the fishing is not yet quite up to par there will be all you can take care of in another two years. Bridle paths are being laid out and within a short time there will also be plenty of dude-ranch facilities nearby. The building of tennis courts as well as desert gardens is included in the plans. There are good hotels near Boulder dam, and there is a government camping ground where the visitor may camp for nothing.

### Are Earthquakes Possible?

Lake Mead itself remains the biggest vacation attraction. It was created by the backing up of 41,518,125,000 tons of water from the dam. The question has been raised before the Seismological Society of America whether or not this great, unnatural body of water will cause earthquakes. The Colorado river in its lower course flows through a region where many violent earth-

quakes have occurred in the past, some of them comparatively recently. Scientists have wondered whether the vast weight of water which will be concentrated along the lake will put sufficient additional strain on the crystal rock layers to set off disturbances. It has been suggested that seismograph stations be set up in the region to check the earth's slow movements there, since complete data are not yet available.

Projects along the Columbia river are also getting their share of the tourist trade this summer, for the Northwest has ever been a popular vacation spot. There the throngs are both surprised and pleased to see that the work on the giant Bonneville dam is being completed on schedule.

It will be finished before the year is out. It was in the summer of 1934 when President Roosevelt said, on the scene: "Within three years I hope that the Bonneville dam will be an actual fact, and that as a fact from then on it will militate very greatly to the benefit of the lives not only of the people of Oregon and

Washington but to the whole course of life of the people of the United States."

Bonneville dam rises in some of the ruggedly beautiful country of the Northwest. The wild Columbia has cut a chasm two-thirds of a mile deep through the mountains. Bradford island causes the river to split into two rapid streams, roaring, whirling and throwing spray. From the island to the Oregon shore is the power station, and from the Washington shore to the island is the spillway. The power house and spillway are connected by an earthen dam which runs across the island and is 170 feet high. The entire chain, which is 3,850 feet long, will create a lake 65 miles long, upon which steamers will one day travel into the Cascade mountain region.

### Cost Is \$45,000,000.

Bonneville dam will have cost \$45,000,000 by the time it is completed. With Grand Coulee dam it forms the first serious attempt to harness the Columbia, which river network is the second largest in the country. The river basin, which extends into the states of Idaho, Washington, Montana, Oregon, Nevada, Utah and Wyoming, is said to be five times as large as England.

It has never been possible before to navigate the Columbia more than a short distance inland, but Bonneville dam will attempt to change all that. In the dam is the world's highest navigation lock—a lift of 72 feet. On the Panama canal it requires three great locks to lift a ship only a little higher at Gatun lake. Bonneville itself is 42 miles east of Portland, but it is hoped that the locks will enable steamers to go 200 miles inland along the river.

The town of Bonneville has sprung up near the dam to house most of the workers on PWA project number 23. It is composed chiefly of tarpaper shacks such as the traveler might have seen in the earlier days of the West when the railroads were being built.

### Indians Are Skeptics.

Here is one point upon which the government and nature may not be able to get together; perhaps if the President's magic voice could explain it all to the fish over the radio everything might be all right, but there are those who say the salmon will never use the ladders.

These unbelievers include most of the Cayuse Indians along the Columbia, whose ancestors were taking salmon out of the river long before the white man ever dreamed there was a new world beyond the western sun. "Bonneville means end of salmon," says their chief, George Red Hawk. And today the Columbia produces more salmon than any other river in the world; salmon fishing in its waters is a \$10,000,000 industry.

© Western Newspaper Union.

## AROUND the HOUSE



Items of Interest to the Housewife

**Preserving Broom.**—Soaking a broom in boiling salt water every two weeks will help preserve it.

**Picking Raspberries.**—Red raspberries will keep better if picked early in the morning.

**Fire Prevention.**—To avoid fires keep all cleaning cloths that have been treated with oil in a covered metal container.

**Apple and Rhubarb Jelly.**—Cut apples into quarters. To every pound of apples add one cup of rhubarb juice. Simmer until the apples are soft. Strain through a jelly bag without pressure. To each pint of juice add one pound of sugar. Boil slowly, removing all scum until the juice will jell. Pour into tumblers and seal with paraffin.

**Removing Peach Stains.**—Fresh peach stains can be removed from linen with a weak solution of chloride of lime.

**Washing White Gloves.**—White gloves can be kept white by washing them after each wearing with a soft brush and a pure soap.

**Cheese Molds.**—Pour 1½ cups milk over 2 cups soft breadcrumbs; add 3 well-beaten eggs, 1 heaped cupful grated cheese, 1 teaspoonful salt, pepper to taste, and 1 tablespoonful melted butter. Pour into buttered molds and bake from 20 to 30 minutes in a moderate oven.

**Orange Peel Marmalade.**—Take six orange rinds, or four orange, two grapefruit or orange and lemon rinds, cover with water and pinch of soda, cook till tender; drain. Take out white pulp with spoon. Put rinds through chopper, yielding two cups chopped

rind, add water to cover, about two cups add sugar, about two cups; simmer slowly for three hours. Bottle in the usual way.

**Keeping Peeled Apples.**—Peeled apples can be kept white until used by keeping them immersed in water to which a little salt has been added.

### Use of Copra

The word "copra" comes from the Malayan "kopperah," or coconut, and is now used to denote the dried meat of the nut. The oil extracted from copra is used for making soaps, candles and butter substitutes; the residue or pulp, is used for feeding cattle. Much of the product gathered on the South Sea islands goes to Sydney, Australia, for this purpose. Coconuts are the wealth of the islanders. They supply food and drink to the natives, and the milk of the growing nut is changed by fermentation into a toddy.

### A Drop of Honey

"IF YOU would win a man to your cause," Lincoln said on one occasion, "first convince him that you are his true friend. Therein is a drop of honey which will catch his heart—and which, say what you will, is the greatest high road to his reason—and which, once gained, you will have little trouble in convincing him of the justness of your cause."

Lincoln prepared himself for every interview—he studied the prospect. "I spend one-third of my time figuring what I am going to say, and two-thirds of my time thinking what the other fellow is going to say."

## Uncle Phil Says:



**Better Improve the Other Foot**  
Put your best foot forward, of course, but that doesn't conceal the defects in the other one; it's got to come, too.

"Travel is broadening;" it makes one more resigned to the nuisances at home.

Civilization may not be doomed, but it may be doomed to a good many dark ages in which brains are flouted.

### An Interest Worth While

You can't buy friendship. You can sometimes buy interest in yourself that turns to friendship.

One of the greatest mistakes is to stop a man on the street to point out an error he has made.

People dress handsomely to please themselves more than to impress others.

There's one big fine word to say for a banquet; you forget the day's troubles there.



## CLASSIFIED DEPARTMENT

### WOMEN

Carl Your Own Hair Permanently in 30 minutes. Send for two test curls or \$1 for 30 curl supply. Youthbloom Corporation, 26 E. Washington St., Chicago, Ill.

### BOOKS—PAMPHLETS

BE INDEPENDENT. Three book library of business opportunities, \$2.50. One hundred beautiful photo pictures, \$1.50. FLOID SOVEREIGN, MILFORD, NEBR.

# A Message to Farmers WHO WANT TO MAKE MORE MONEY

66 In order to liquidate property owned by the late George L. Carter, I have been ordered by Mr. James Walter Carter to sell at auction the famous FORT CHISWELL FARMS—located in the finest part of the Blue Grass section near Wytheville, in south western Virginia. I shall do so with the greatest pleasure; for this is some of the best land—whether for farming or for grazing—that I have seen in all my 40 years' experience.

FORT CHISWELL FARMS have everything demanded by the farmer who wants to make the most money from his efforts:—unusually rich soil, a fine climate, well-watered fields, easily accessible markets.

So, if you are not farming "for your hedth", read carefully every word in this announcement. Then send for a free illustrated book which gives complete facts about FORT CHISWELL FARMS and the money making opportunities offered to those who attend the auction on July 3rd, 99

*Joseph P. Day*

33 FORT CHISWELL FARMS parcels of 30 to 300 acres to be sold separately

## AUCTION SAT., JULY 3rd

ON THE PROPERTY, RAIN OR SHINE AT 2 O'CLOCK BETWEEN PULASKI & WYTHEVILLE, VIRGINIA at the junction of U. S. Routes No. 11 & No. 52

Most of the farms front on a U. S. or a Virginia highway, have electric current available and have tenant houses, farm and other buildings.



Within a few miles of Fort Chiswell Farms are grade schools, high schools and churches of various denominations.

### LEADING AUTHORITIES AGREE:

Fort Chiswell Farms are among the finest in south western Virginia.

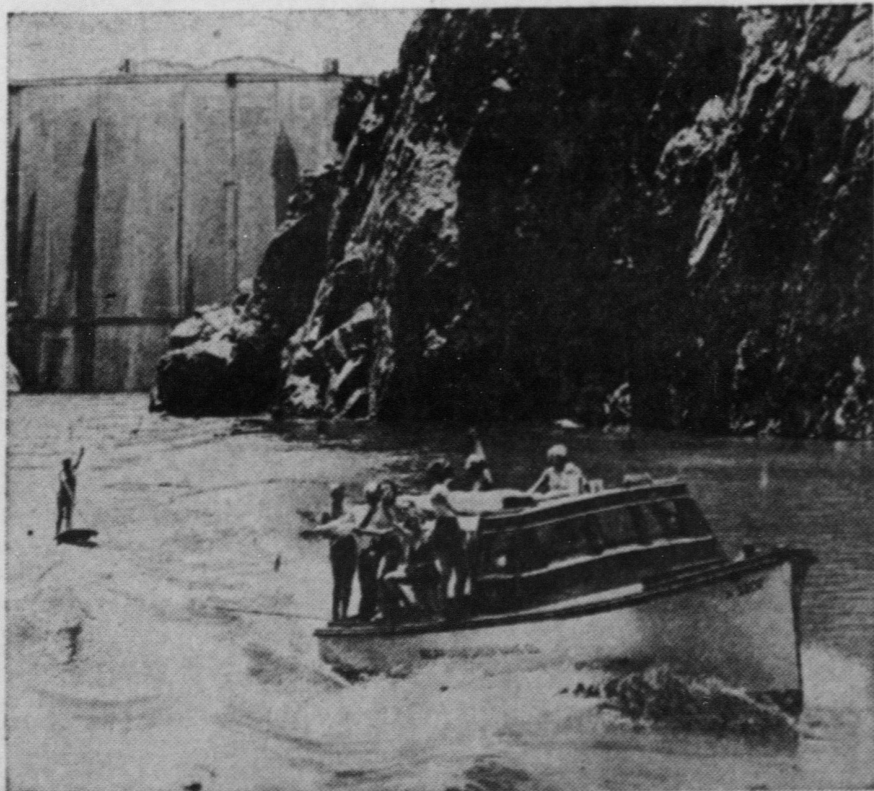
The land is good soil, well adapted to the production of corn, small grain and forage crops. Most of the farms are in good sod, blue grass being a predominant plant, which is splendid for grazing. Some of the lands are well-adapted to apples and other fruit. The farms rank far above the average for the county in productive ability. The fields are well-watered, making favorable conditions for all classes of live stock.

**COMMERCIAL OPPORTUNITIES:** In addition to the opportunities that the auction will offer to farmers, there are a number of other money-making openings of unusual interest—such as excellent sites for gas stations, stores, etc.

### LIBERAL TERMS

*Joseph P. Day*  
Auctioneer

Write or phone for full particulars and FREE ILLUSTRATED BOOKLET, to P. O. Box 188, Wytheville, Virginia. Telephone Max Meadows 615, local office on property. Executive Offices: 67 Liberty St., New York City



Aquaplaning on Lake Mead, in the heart of the desert.

over the Grand Canyon, Zion, Bryce and Death Valley national parks, the Black canyon, the Kaibab forest and other famous scenes.

There are also power boats on Lake Mead which make scheduled excursion trips, stopping over at several points. It's quite a ride around Lake Mead, a 100-mile body of water.

### Lecturers Explain Dam.

The interest of government projects as incidents in a vacation is apparent from the hundreds who choose to include a trip through the dam itself, under the able guidance of lecturers from the reclamation service. The long ride in an elevator down into the dam is a swift one; to many visitors it is also doubly thrilling for the fact that they have never before ridden in an elevator. The lecturer takes them through the catacombs under the dam, through the power plants so large and complicated they look like a moving picture set—as indeed do the switchboard control rooms and diversion tunnels.

quakes have occurred in the past, some of them comparatively recently. Scientists have wondered whether the vast weight of water which will be concentrated along the lake will put sufficient additional strain on the crystal rock layers to set off disturbances. It has been suggested that seismograph stations be set up in the region to check the earth's slow movements there, since complete data are not yet available.

Projects along the Columbia river are also getting their share of the tourist trade this summer, for the Northwest has ever been a popular vacation spot. There the throngs are both surprised and pleased to see that the work on the giant Bonneville dam is being completed on schedule.

It will be finished before the year is out. It was in the summer of 1934 when President Roosevelt said, on the scene: "Within three years I hope that the Bonneville dam will be an actual fact, and that as a fact from then on it will militate very greatly to the benefit of the lives not only of the people of Oregon and