

FARM CALENDAR.

Timely Reminders from Pennsylvania State College School of Agriculture

Chicks Need Room—When winter chicks are brooded they need more room. In a 10x12-foot house 200 chicks should be kept instead of 300 as they will occupy the house longer than chicks brooded in the normal season.

Feed Cows Roughage—To get the greatest returns from the feed dollar this winter through dairy cows, liberal feeding of roughage with grain carefully weighed out to each cow according to her actual needs should be the rule.

Ventilation Essential—Good ventilation in the storage place aids rapid cooling of the fruit placed there. Doors, windows, and ventilating shafts should be arranged so that air will move through the entire length of the room, thus bringing a fresh supply of cool air to each apple, say Penn State fruit specialists.

Cull Poor Ewes—All unproductive ewes should be culled out of the flock now. The group picked to go will include ewes with broken mouths, bad udders, and light shearing prospects.

Store Vegetables Right—Many vegetables keep well in storage only when cool, moist conditions are maintained. Root crops and leafy vegetables are in this group. Ask your county agent for complete information on the subject.

Keep Cows Warm—Keep the dairy cows in the barn on all cold days during the fall months. The extra milk will more than pay for the additional care and feed.

Inspect Farm Buildings—This is a good time to see if the farm buildings need repair.

PEARS FOR SALE—Nice quality pears, for sale cheap.—Wilkie Horner, Tusseyville, Pa.

WANTED—Market chickens of all kinds; tankage sold, \$1.75 per cwt.—A. M. Reigel, Centre Hall; phone 11-11.

PUBLIC SALE

SATURDAY, OCTOBER 31, at 1:00 o'clock p. m., three miles west of Centre Hall:

HORSES—Black mare, 9 years old, weight 1200 lbs.; Sorrel mare, 8 yrs. old, weight 1200 lbs.

20 HEAD REGISTERED AND GRADE GUERNSEY CATTLE—TB and blood tested, 11 cows, 6 heifers, 3 bulls.

19 HOGS—3 sows, 15 shoats, one small Duroc boar, 199 White Leghorn chickens.

IMPLEMENTS—Weber wagon, low farm wagon and ladders, McCormick Deering spreader, mower, 3-section tractor harrow, corn sheller, 3-hoe drill, disc cultivator, walking plow, land roller, self rake, fodder shredder, hay fork, 120 ft. rope and pulleys, buggy, forks, shovels, etc.; set work harness and saddle, 1000 size oil brooder, 10 ft. chicken feeder, 14 ft. round brooder house, 8x30 ft. portable silo, 32 volt light plant, 5-yr. heavy duty batteries, 2 single-unit Hinman milking machines, 2 25-volt motors, deep-well pressure pump and pump jack, Myers shallow-well pump, butchering tools, and some household goods.

E. M. Smith, auct., H. L. Ebricht, clerk.

L. H. GARBRICK.

Public Sale Register

SATURDAY, OCTOBER 31, at 1:00 p. m., 3 miles west of Centre Hall, L. H. Garbrick will sell farm stock and implements. E. M. Smith, auct.

SATURDAY, NOVEMBER 14, at 10:30 A. M., on the C. B. Neff farm, 2 miles west of OM Fort, on Earllytown road, Mrs. Kathryn M. Smith will sell: Livestock, implements, and some household goods.—E. M. Smith, auct.

WEDNESDAY, NOVEMBER 18, at 1:00 P. M., about 5 miles south-west of Centre Hall: Horses, cattle, farming implements and household goods. E. M. Smith, auct.—Ruth Detwiler.

COUNTY POMONA GRANGE TO MEET AT PHILIPSBURG

The Centre County Pomona Grange No. 13 will meet in the Parish House, Philipsburg, with Moshannon Grange as host, on Saturday, November 7. There will be three sessions. At the morning session, opening at 10:30, Harry Hagyard will give the address of welcome, and Harry Fisher the response. This will be followed by a recess for lunch.

The afternoon session opens at 1:30 and the program will be in charge of the lecturer. Group singing, address on Highway Safety, Thanksgiving program, playlets, readings and games will be numbers, and a period will also be given to the home economics chairman.

At 8:00 o'clock, the evening session will open with group singing, entertainment, returning of Record Book by Howard Grange, conferring of 5th degree.

Supper will be served by the Moshannon Grange at 35c per plate.

Work on the three-mile stretch of road in the Fourteen-Mile Narrows on the Union county end, between Sand Bridge and the Hayes Road, will in all probability be completed by November 15.

PENNY-A-WORD COLUMN.

FOR SALE—Hand picked, sprayed apples: Northern Spy, Baldwin, Wine-sap and Gayno. Ralph Luse, Centre Hall; phone 25R1. x43

FOR SALE—Small cream separator, for sale cheap; also, a riding saddle. Vernon G. Wagner, Centre Hall, R. 1.

PAPER HANGING—I am prepared to do you an expert job of paper hanging; you furnish the paper if you desire, or I will do so.—James E. Frohm, Centre Hall, Pa. x44

WANTED—Female crocheters experienced on infants' hand-made booties, sacques and shoulderettes. Write Chas. Metz, 11 N. Sixth St., Philadelphia, Pa. x42

INSURANCE AND REAL ESTATE

WANT TO BUY OR SELL? SEE US FIRST.

C. D. BARTHOLOMEW
CENTRE HALL, PA.

WEIS PURE FOOD STORES

FRED LUSE, Manager.

CENTRE HALL

FIG BARS 2 lbs 15c

CHOCOLATE WHIPPED CREAMS pound 15c

MOTHEE'S OATS (small package) 3 for 15c

LEBANON BOLOGNA pound 19c

RAINBOW BLEACH (qt. bot)—2 for 25c

WALDORF TOILET TISSUE 4 rolls for 17c

MILD CHEESE lb 21c

4X SUGAR Lb. Boxes—2 for 20c

PENN RAD MOTOR OIL (2-gal. can) 98c

BREAKFAST HOUR COFFEE pound 17c

OUR LEADER COFFEE pound 19c

TOWN TALK COFFEE pound 20c

HERSHEY CHOCOLATE 1/2 lb cakes—2 for 15c

MINCE MEAT 2-lb jar 35c

WHEN IN NEED OF Planing Mill Work

of any kind, LUMBER, ROOFING, Nails, All Kinds Building Material,

CALL AT—**Garrett's Planing Mill**
GOOD MATERIAL AND HONEST PRICES
Rebersburg, Pa.
Phone 16R42

PUBLIC SALE of --100 HEAD--

Horses - Colts - Mules

At My Barn, 118 E. Louthur St. — CARLISLE, PA.

SATURDAY, OCT. 31 -- 1 P. M. Sharp

ONE CARLOAD, 44 head of the best suckling Colts that I ever owned. All good colors with bone, size, shape and quality. Mostly all Percheron and Belgian breed. Quite a number of mated teams. A lot of mares that will make the right kind of brood mares.

ONE CARLOAD of Iowa Colts, 2 and 3 years old. As good as they grow with two good ends and middle. Boned right, shaped right, and gentle. You will find a lot of mated teams in this load of bays, grays, blacks, sorrels, and brown. These colts must be seen to appreciate them, so come and take a look.

ALSO, 25 head of home horses and mules that are broke to work. Special—One spotted saddle horse, 5 years old; stands 15 1/2 hands high, 3 gaited. Well broke to ride with lots of action. One spotted mare, pony, 5 years old, stands 13 1/2 hands high; good broke to ride, with lot of quality.

This stock can be seen from Wednesday, Oct. 28 until sale. Everything must be as represented or your money refunded. Stock of two or more will be delivered any reasonable distance. Sale rain or shine.

Geo. Deitch, Auct. Raymond Wise, Clerk.

CHARLES McHENRY

REGISTER'S NOTICE.

Notice is hereby given to all persons interested that the following inventories of the goods and chattels set apart to widows in accordance with the provisions of the Fiduciaries Act of 1917 have been confirmed nisi by the Court and if no exceptions are filed on or about the first day of next term the same will be confirmed absolute:

1. The inventory and appraisal of the personal property of Witmer E. Lee, late of Potter Township, deceased, was set apart to his widow, Maizie E. Lee.

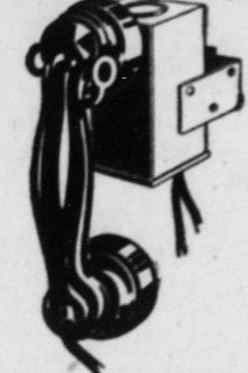
2. The inventory and appraisal of the personal property of John R. Mark, late of Philipsburg Boro, deceased, was set apart to his widow, Vivian R. Mark.

3. The inventory and appraisal of the personal property of Joel A. Rachau, late of State College Boro, deceased, was set apart to his widow, Emma R. Rachau.

4. The inventory and appraisal of the personal property of Joel A. Sperry, late of State College Boro, deceased, was set apart to his widow, Carol N. Sperry.

JOHN L. WETZLER,
Register of Wills

WHAT'S THIS ?



This is a "hang-up handset"—a modern type of telephone instrument used on wall locations in kitchens, playrooms, garages, shops and stores or on the side of a desk or table where working space is limited. It provides handy telephone service within easy reach—yet it's never in the way.

Extension telephones save time and steps; give extra protection and privacy. For complete information call the Business Office or ask any telephone employee.

GRADE TYPE HANDSET



FOR BEDSIDE, DESK OR TABLE

THE BELL TELEPHONE COMPANY OF PENNSYLVANIA

DAD NEEDS good light TOO



Better Sight I. E. S. Lamps Provide Perfect Light For Reading . . .

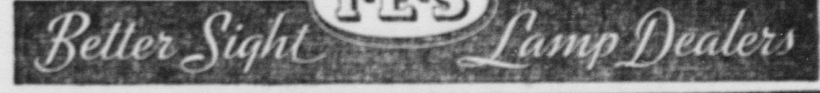
DON'T let dad—who has already put in a day of hard work—read by poor light in the evening. It can cause eyestrain and add to his fatigue.

Get him an I.E.S. lamp. It will give him the best kind of light—protect his eyes, and make reading a pleasure and a relaxation. I.E.S. lamps are specially priced—until November 1 only.

Free Home Lighting Survey

Ask West Penn Power Company to test your home lighting with the Sight Meter. No obligation!

SEE THESE NEW LAMPS THEY ARE BEAUTIFUL!

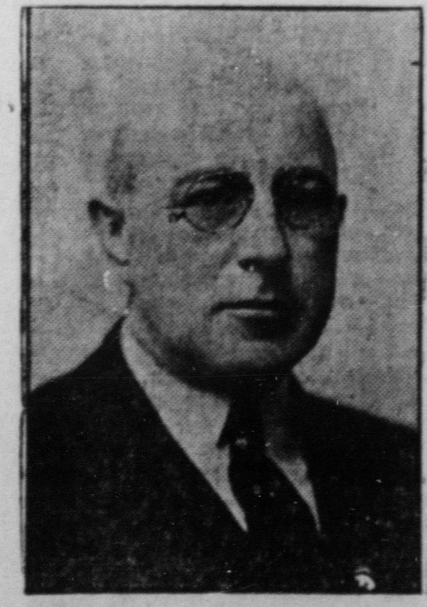


New 1937 CHEVROLET The Complete Car—Completely New



With a completely new Valve-in-Head Engine—giving new power, new smoothness, new economy—in fact, the only old thing about it is its reliability.

On **SAT. NOV. 7** display



KEEP DON GINGERY in CONGRESS (DEMOCRATIC)



The **FIRST NATIONAL BANK**
CENTRE HALL, PA.