

ITEMS OF LOCAL INTEREST

Clarence Rudy, employed by John Rudy, visited with the William Stoner family, at Tusseyville, for a week.

The high school attendance was cut down more than fifty per cent, on Monday, due to the road being chock full of snow.

The east branch district of the Centre County Christian Endeavor Society will hold a rally at Rebersburg, in the Reformed church, Tuesday evening, January 28.

Mr. and Mrs. J. M. Coldron, Mrs. George Rimmey and Miss Anna Sweeney attended the funeral of Mrs. Charles Segner, on Saturday afternoon, at Boalsburg.

Once again, the first time in a long while, a team of horses hitched to a farm sled is seen. Four-in-hands were also on the road Tuesday, their burden for the most part being milk in cans.

Mrs. J. E. Royer, who had been rather seriously ill for some time, has been up and about the house since Friday but continues to experience dizziness at intervals too frequent for comfort.

The visit to the Millheim Rehebech lodge by members of lodges at Pine Grove Mills, State College, Boalsburg, Centre Hall and Spring Mills, appointed for Monday evening, was postponed on account of bad road conditions to a later date.

Earl A. Seehler, of Millburg, was appointed sealer of weights and measures of Union county, and Walter Frick, of Lewisburg, was reappointed engineer. Howard Leiser and Rev. W. H. Clipman, also of Lewisburg, were sworn in as associate judges.

The Ladies' Bible class in the Reformed church school, as has been their custom for some years, held their January meeting at the parsonage. The gathering afforded a most pleasant evening to all the participants. Refreshments were served and enjoyed by all.

First Lieut. and Mrs. Edward W. Wigman, of Benecott, Elk county, were week-end guests of Mr. and Mrs. J. S. Bowzer, Lieut. Wigman, a short time ago, was located at Camp #5, and with Mrs. Wigman lived in the Rowe bungalow, until transferred to the CCC camp in Elk county.

George Wentzel, burgess of Howard borough, has brought to light and is enforcing in part a curfew ruling prevailing in Europe long before the Norman conquest. The feature the Howard burgess is enforcing with more or less success is calling of youth from the streets at 8:00 p. m.

Fourteen of the seventeen who applied for papers to take the Civil Service examination for the position of substitute clerk in the Centre Hall post office appeared at the appointed place, the local high school building, on Saturday. It will be some time before the applicants receive their ratings, and likely a much longer time until an appointment is made.

Logan Decker informs the Reporter that wild game in his section is hard pressed for food. He is cutting various species of oak trees for prop timber, and the tops of these are well trimmed of the tips of branches by the ten or twelve deer that harbor in that locality. Small game, he says, is also having a hard struggle to find enough food to sustain it.

Mr. and Mrs. John Forster, of Aaronsburg, on Thursday motored to Ontario, Canada, to which place they were called due to the death of Patricia Allison, a niece of Mrs. Forster. The child, thirteen years old, is a daughter of Charles Allison. Her death was caused by some form of anemia. Mr. and Mrs. Forster were accompanied on the trip by Miss Catherine Allison, a niece, of Bellefonte.

A. H. Spayd and John A. Heckman have been confined to their respective homes since Friday from sickness. Mr. Spayd is suffering from a severe attack of erysipelas which first made its appearance on the inside of the nose from which it spread to portions of his face. Skillful treatment by the family physician is proving beneficial and arrested the spread of the disease. Mr. Heckman is a sufferer from lumbago which is keeping him on needles as to the frequency of the jibes in the back.

Last week's mention of a shot being fired through a second-floor window in the Mitterling home brought to light other similar shots taken by at least a reckless person, if not one practicing deviltry. Howard Spangler informs the writer that one of the window lights in his living room on the second floor of the Penns Valley bank building was punctured three times with a shot, and that a glancing shot broke a light in his sleeping room. It was about the holiday season the windows were punctured. Mr. Spangler decided not to mention the incident, thinking that perhaps he might get a clue, but on reading the Mitterling window crashing, gave the writer the information.

Bruce Knarr, now living in the Arney brick farm house, has leased the home now occupied by E. E. Zettle and will move into it next April 1st. Mr. Zettle at that time will have his new bungalow located close by ready for occupancy by himself and Mrs. Zettle.

Mr. and Mrs. Paul Zellers, who also occupy a portion of the Arney place, will be obliged to vacate but up to this time have not been able to secure quarters.

CENTRE COUNTY HOSPITAL NOTES.

Tuesday—Admitted, Andrew Rockey, Centre Hall, R. D.; Discharged, Miss Faye Harter, Coburn.

Friday—Admitted, Mrs. Mary F. Hazel, Aaronsburg. Discharged, Miss Erma Fryer, Coburn.

Saturday—Discharged, Miss Jennie Bartholomew, Centre Hall.

There were fifty patients in the hospital beginning of this week.

LOCALS.

Potter township auditors present their financial statement this week.

Samuel Bitner, acting for W. W. Kerlin, on Wednesday, conveyed John Wyland, ten, son of Mr. and Mrs. Theodore Wyland, of near Potters Mills, to Philipsburg State hospital where Dr. Galbraith, a bone specialist will make an effort to correct an abnormality in the feet of the lad.

NEW BELL PHONE RATE FOR SUNDAY AND NIGHT CALLS

Introduction of reduced Sunday rates for out-of-town telephone calls and inauguration of new low night rates for person-to-person calls have been announced by the Bell Telephone Company of Pennsylvania.

Briefly, the new tariffs provide for extension of the existing night-time reductions on station-to-station calls in Pennsylvania to include all day Sunday, and introduction of low rates for person-to-person calls every night and all day Sunday.

The new reduced Sunday rates became effective January 19. The reduced person-to-person rates went into effect last week and will be in force every night of the week from 7 p. m. until 4:30 a. m.

Heretofore, the rate for a person-to-person call—which is a call made to a specific person—always has been the same both day and night. The new tariff schedule establishes reductions on these calls in cases where the day rate is fifty-five cents or more for the initial three-minute period. On station-to-station calls, reductions at night and on Sunday apply where the day rate is forty cents or more.

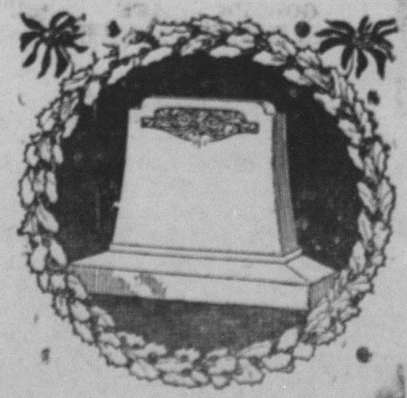
First of the 400



From more than 400 Texas girls, Miss Carolyn Durham, whose home is in Dallas, was chosen acting chief of the Rangerettes, official hostesses of the Texas Centennial Exposition which opens June 6. She will assist in choosing and training the 25 other girls of the Southwest who will wear the cowgirl hostess costumes from June until December.

Increased Air Service

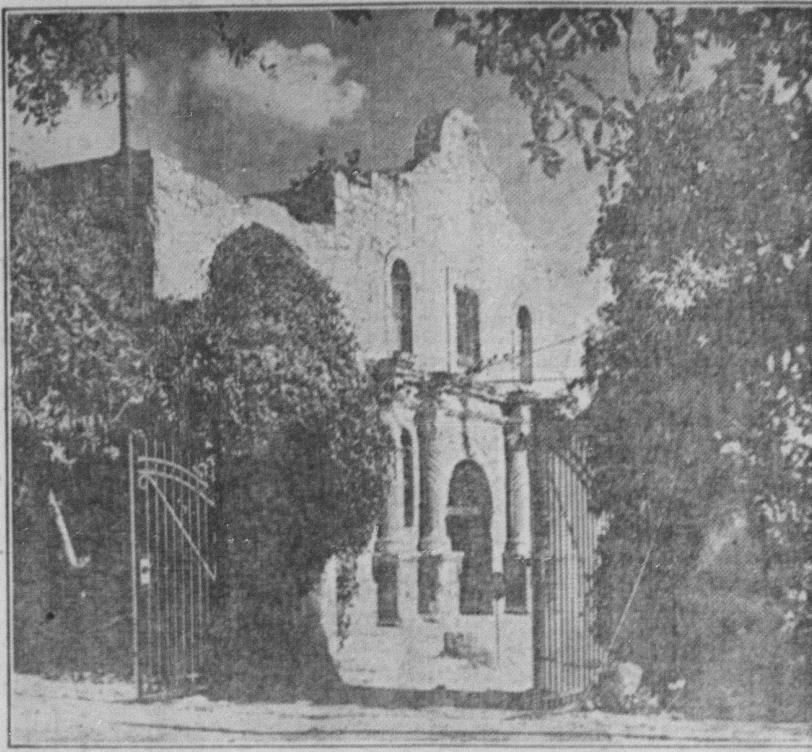
Dallas, Texas.—Passenger service of American Airlines into Dallas during the Texas Centennial Exposition will be augmented in anticipation of increased traffic, officials of this company announce. Orders for 15 bi-motored Douglas planes, each capable of carrying 32 passengers, for delivery by March 1, next year, have been placed. These ships will be used on the New York-Los Angeles run via Dallas, it is announced.



A Monument Erected— to the memory of a loved one is a substantial expression of your lasting affection. To select one that will be appropriate requires careful consideration—for it must last through all the years to come. Let us co-operate with you by submitting suggestions based upon our wide experience as memorial sculptors.

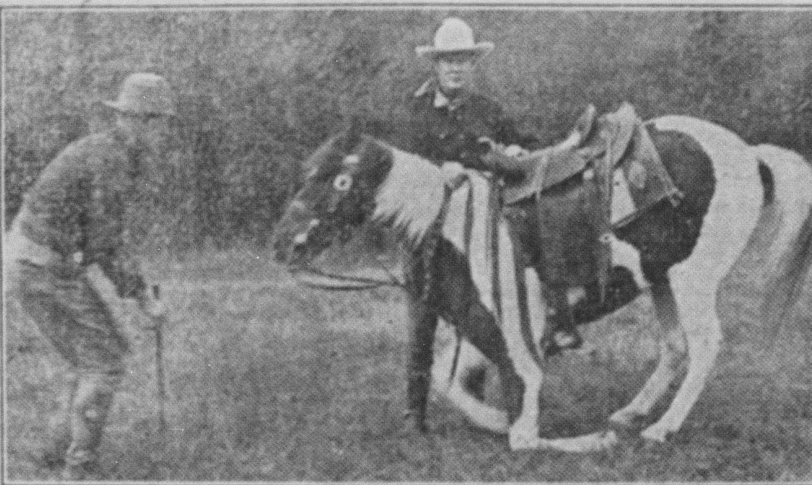
C. H. HOMAN
Successor to
H. G. STROHMEIER
Centre Hall Marble & Granite Works,
CENTRE HALL

Sunset Over Historic Alamo



A Texas twilight adds softness to this photograph study of the Alamo Mission, historic Texas shrine of Liberty, in the center of San Antonio. Here 182 Texans died to a man, defending the mission in the revolution against Mexico. One hundred years later the Texas Centennial Exposition opening at Dallas June 6, pays tribute to the Alamo's gallant defenders.

"The Best Trained Horse in Texas"



Captain Leonard Pack, chief of the Texas Ranger force at the Texas Centennial Exposition, puts his famous trained horse, Pinto, through his paces at Kiest Park, on the outskirts of Dallas. Assisting Captain Pack, who for 25 years has been one of the Southwest's best-known peace officers, is Jerry Wolfe, noted rodeo star. Pinto is said to be the best trained horse in the Lone Star State.

TRANSFERS OF REAL ESTATE

J. W. Russell to Mabel Goodman, tract in Haines twp.; \$2,200.
Henry Haugh to Alma M. Detwiler, tract in Gregg twp.; \$1.00.

Credits on Subscription Next Week.

The Reporter's mailing list will be corrected next week. If you are in arrears, prompt payment will assure a change in your label figures. Do it now, please.

FIGHT INFANTILE PARALYSIS



Attend The Birthday Party for the President; Grange Arcadia, Centre Hall, Thurs. Ev'g, Jan. 30

This Space Contributed for the Cause by The Centre Reporter.

YOU CAN DEPEND ON FORD V-8 SUPER-SAFETY BRAKES

WITH Ford, safety is always the first consideration. The cost of producing safety is always secondary.

With every known type of brake to choose from, Ford has chosen the mechanical type for the Ford V-8, because this type has been proved the safest and most reliable under all driving conditions.

The Ford V-8 has 186 square inches of braking surface—an unusually high ratio of braking surface to car weight. Big 12-inch alloy-iron brake drums contribute to quick, certain stopping under all conditions. Deep cooling ribs dissipate heat rapidly when brakes are continuously or severely applied.

The same sound safety engineering has gone into every part of the Ford V-8. The Ford body is one-piece, welded-steel construction. Ford gives you Safety Glass in every window at no extra cost.

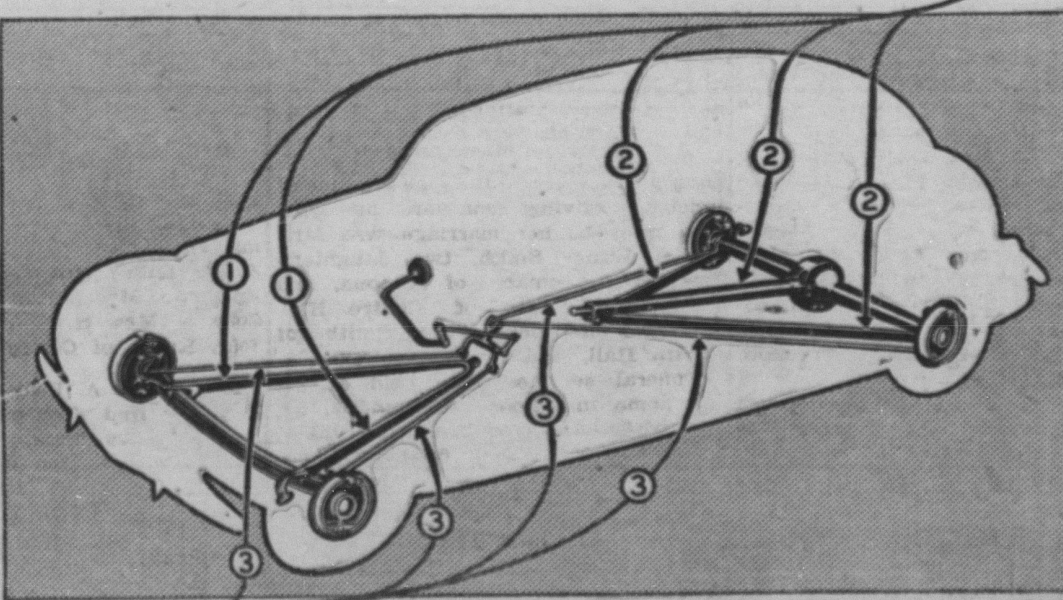
Drive the Ford V-8. See how firmly it holds the road on curves—how dependably the brakes work on rough roads, steep hills, slippery roads—anywhere. Your Ford dealer will put a car at your disposal for a complete try-out, any time you say.

AUTHORIZED FORD DEALERS

On the air—these outstanding programs
SUNDAY EVENINGS—Ford Sunday Evening Hour with famous guest stars. Entire C. B. S. network. *
TUESDAY EVENINGS—Fred Waring and His Pennsylvania. Complete C. B. S. chain. *
FRIDAY EVENINGS—Fred Waring and His Pennsylvania. N. B. C. complete network.

PERMANENT AXLE ALIGNMENT

Two rigid steel radius rods brace the front axle from the rear. (1) The rear-axle housing is braced with two radius rods and the torque tube which encloses the driving shaft. (2) On this permanent wheelbase, any braking system now in use could be used. But it affords the perfect mounting for Ford Super-Safety Mechanical Brakes.



EACH BRAKE INDEPENDENT

No one Ford brake has to depend on the other three. Each of the four Ford brakes (3) is operated by a separate solid-steel rod. These rods transmit the pressure of your foot on the brake pedal to the big brake shoes in each of the drums at the four wheels. No road or driving condition can interfere with this action. If the brake on one of the wheels should become ineffective, three brakes would remain in service.

Ask your Ford dealer about the new \$25 per month and UCC 6% Finance Plans

FORD V-8 for 1936