

**THE FEATHERHEADS**

By Osborne  
© Western Newspaper Union



**FINNEY OF THE FORCE**

By Ted O'Loughlin  
© By Western Newspaper Union



**MESCAL IKE**

By S. L. HUNTLEY



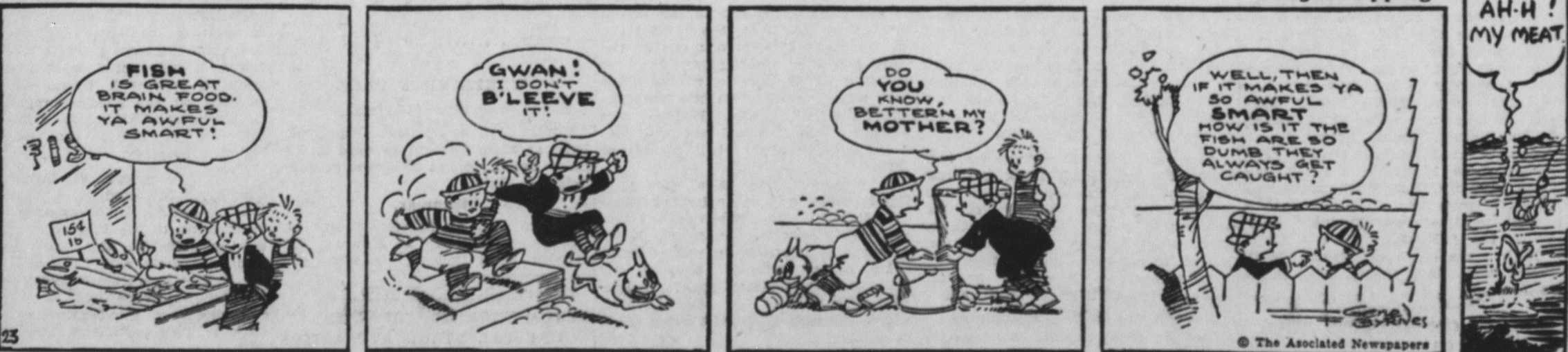
**'SMATTER POP— Just Wasted Time**

By C. M. PAYNE



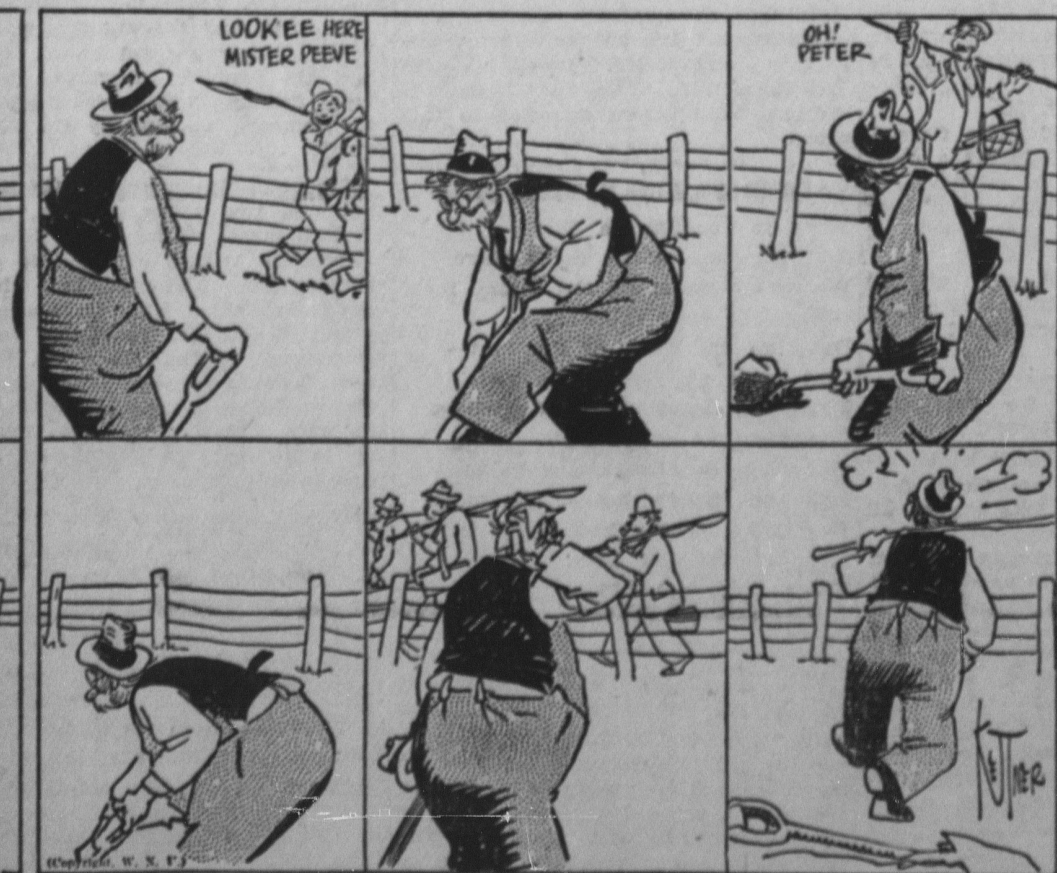
**'REG'LAR FELLERS**

Caught Napping



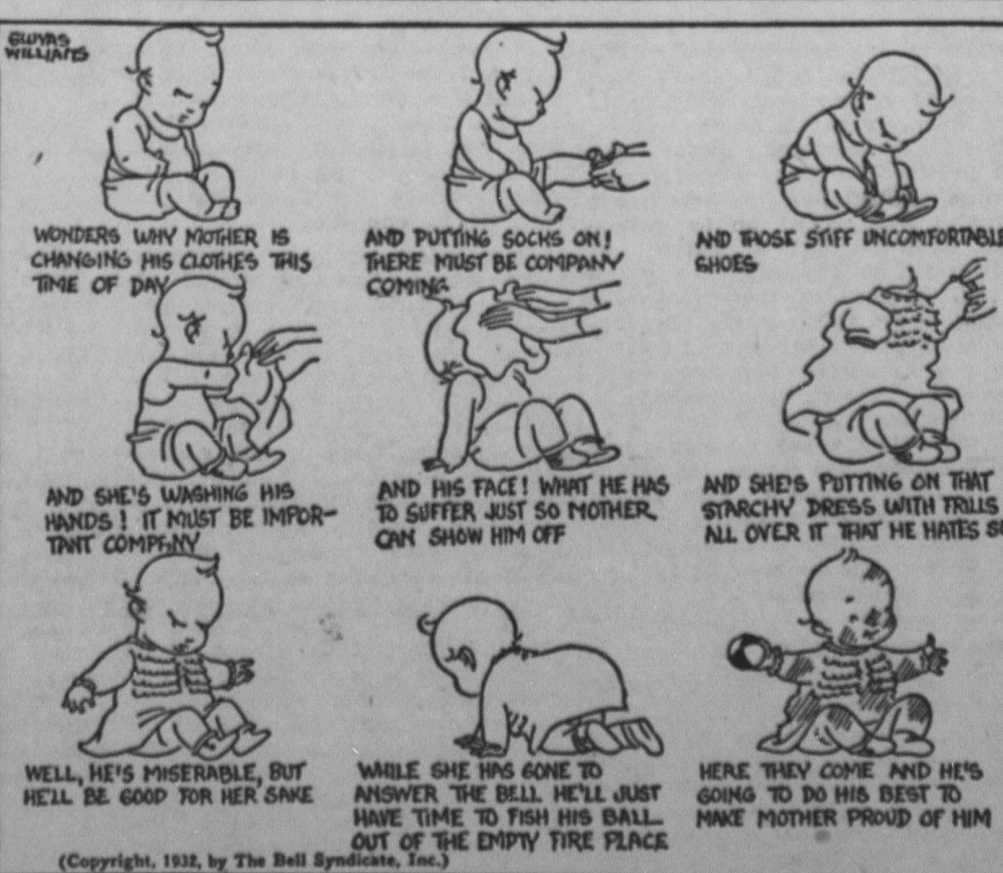
**Our Pet Peeve**

By M. G. KETTNER



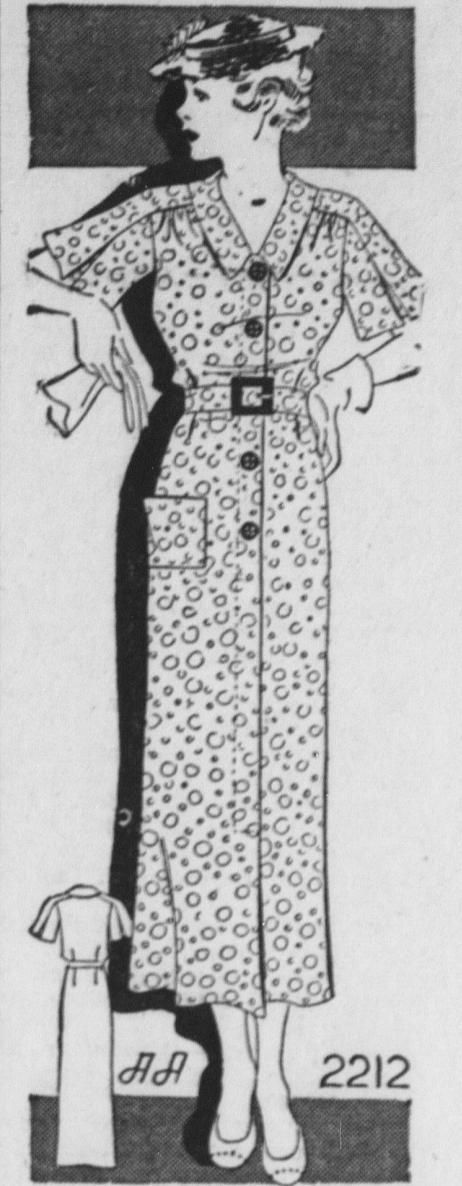
**Company**

By GLUYAS WILLIAMS



**Pleated Sleeve Gives Striking New Effect**

PATTERN 2212



A pleated sleeve that forms an epaulet shoulder is new and creates a striking effect. (Note the back view, too.) Add to that, the center front buttoning that is so much the rage, soft gathers above the bust line, and a patch pocket, and you've a shirtmaker frock of unrivaled chic. It's a grand thing to jump into for that unexpected jaunt, and is smartly at home in practically any daytime environment. Make it in a new printed linen or cotton, or a cravat silk. It's stunning, too, in plaided or striped sports seersucker or cotton.

Pattern 2212 is available in sizes 14, 16, 18, 20, 22, 24, 26, 28, 30, 32, 34, 36, 38, 40 and 42. Size 16 takes 3 1/2 yards 39 inch fabric. Illustrated step-by-step sewing instructions included. SEND FIFTEEN CENTS (15c) in coins or stamps (coins preferred) for this pattern. Write plainly name, address, and style number. BE SURE TO STATE SIZE. Address orders to the Sewing Circle Pattern Department, 243 West Seventeenth Street, New York City.

**SMILES**

POLITE INCARCERATION

"Do you think you can keep that desperado in jail?"  
"I don't know," answered Cactus Joe. "We're doin' our best. We have fired two cooks he didn't like, given him credit at the licker dispensary and subscribed for all the magazines. But somehow we don't seem able to keep him satisfied."

**Why Not?**  
Wife—I think you ought to talk to me while I sew.  
Hubby—Let's change it around and you sew while I read.—Pathfinder Magazine.

**Once Is Enough**  
Inquisitive Old Lady Passenger—Do boats like this sink often?  
Sailor—Only once, ma'am.

**The Alibi**  
Chow Hound—Hey, messman, what's wrong with these eggs?  
Mess Cook—Don't ask me, I only laid the table.

WNU-4 22-25

