

ITEMS OF LOCAL INTEREST.

W. C. T. U. will meet at the home of Mrs. C. D. Bartholomew Tuesday evening of next week.

The Elks club will serve a turkey dinner to all Elks Monday evening of next week.

Jerry Smith, a Potter township road supervisor living west of town, has been confined to bed from sickness for more than a week.

Mrs. J. W. Tressler takes this means of thanking neighbors and friends for their assistance and sympathy during her recent bereavement.

Archie Moyer, long a mechanic in the Homan Motor company garage, has been laid up from grip for a week. While his condition is not thought serious, he is confined to bed.

The regular monthly meeting of the board of directors of the Centre County Motor Club will be held at the Hotel Brockerhoff, Bellefonte, on Friday, February 6th, at 6:15 P. M.

The members of the L. T. L. were very nicely entertained at the home of Miss Alice Spiker, a member, one evening last week. After the regular program was gone through with, refreshments were served by Mrs. Spiker.

Dr. H. R. White, the latter part of last week, went to Philadelphia and while in that city observed an operation at Temple University hospital for the removal of a facial nerve, Miss Elizabeth Bartholomew, of town, being the patient.

The horse sale on Monday was very largely attended. It was held by C. E. Shively at the Centre Hall hotel barn. A number of the horses offered were sold on the block at what is considered very fair prices. Some private sales were also made.

While Edward Riter was cutting trees for Mrs. John G. Dauberman, on Tuesday, along the high tension electric line running to the town reservoir, a grape vine on the tree swung in so that it fell on the wires and broke them. No one was injured, but sparks were plentiful.

Prof. N. L. Bartges, principal of the Avis High school, is one of eight Avis teachers working for a degree offered through the extension courses by Penn State College. Prof. Bartges has his work all completed except that on a thesis covering the subject of spelling in the Avis schools.

Rev. L. V. Lesher, pastor of the Millheim Lutheran church, once each month delivers a sermon for the special benefit of children. At this service children furnish the music, act as stewards and ushers. This service will be held Sunday afternoon at 2:30 o'clock, and is open to all ages.

A gift of fifty thousand dollars by the Presser Foundation for the erection of a music building at Juniata College at Huntingdon, was announced. A stipulation of the Presser Foundation gift is that the college raise a similar sum and expend not less than one hundred thousand dollars in erection of the building.

Mrs. Lizzie Jacobs, Mrs. Emma Emerick, Misses Margaret Jacobs and Verma Emerick, and W. L. Jacobs, on Tuesday, visited Miss Phoebe W. Potter, near Pennsylvania Furnace, at the home of her nephew, Milo Campbell. She was found to be in good spirits and in a general good condition for one of her age.

Commissioner John S. Spearly, who recently returned from the Geisinger hospital, Danville, and is now very much improved in a general way, expects to return to the hospital on Monday for a further operation. He has not been able to attend board meetings up until now, but expects to be at the office by the latter part of this week.

What is known to foresters as improvement cutting is being done in Seven Mountains along the road leading west from Sunset club house. Ten men, under the direction of Forest Ranger W. F. McKinney, are now at work. Removal of brush, cutting of damaged trees and trimming of young trees of vigorous appearance embraces the work being done.

Mrs. W. H. Strohecker, who is suffering from heart trouble, was dangerously ill on Friday, but by Saturday her condition became better and has since been gradually improving. Her two sons were communicated with on Friday and Saturday noon were at the bedside. The sons are Clair, of Bethlehem, and Ray, of Utica, N. Y. The latter was accompanied by his wife. They returned home Sunday.

Facial Nerve Removed in Operation.

On Friday morning Miss Helen Bartholomew accompanied her niece, Miss Elizabeth Bartholomew, to Philadelphia where the latter submitted to the removal of the upper right facial nerve (a sensory nerve), by her former operating doctor, Dr. C. N. Russell, in the Garretson Hospital connected with Temple University. The operation was performed at 3:30 P. M. Saturday afternoon. The ladies returned home on Tuesday afternoon, Miss Elizabeth minus the nerve and a lot of pain in her face, but with a very much enlarged and blackened cheek and eye.

The nurse in charge was Miss Lenora Faust, formerly of Potters Mills, and a C. H. H. S. classmate of Miss Elizabeth, but now a graduate of Cooper Hospital in Camden, N. J.

MARRIAGE LICENSES.

Eugene N. Hartsock Mansfield
Emma M. Williams Millbrook
Nandron E. Carlson Snow Shoe
Iaes I. Martin Moshannon
Lincoln R. Scott So. Hadley, Mass.
Hulu B. Stevens Penna. Furnace

\$140,000 PROPOSED FOR CONSTRUCTION WORK IN STATE

Governor Pinchot Presents Budget Message to Legislature—Declares Road Program "Largest Ever Undertaken by Any State or Any Nation"—Recommends Reduction of Motor Car Operators' Fees and Passenger Car Registration Fees.

Governor Gifford Pinchot on Tuesday recommended to the Penna. General Assembly a road program which he described as the largest undertaking ever contemplated by any highway department on earth.

"If you see fit to approve this program for rural roads," the governor told the members of the legislature assembled in joint session in the hall of the house, "it will be the largest, most comprehensive and most important step in road construction ever undertaken by any State or nation in the world."

Governor Pinchot said that relief of unemployment has been uppermost in his mind in preparing the budget and that as large a part of available funds as possible had been thrown toward planned construction which will furnish jobs for men now out of work. The total sum thus made available, he said, is nearly \$140,000,000 or 40 per cent of the total budget. Highways, welfare, health and public instruction will claim nearly the whole of this amount.

The principal points in the road program recommendations follow:
Temporary transfer of \$10,000,000

HAMMERMILL BOND
We use it when
PRINTING
GOOD JOBS
Give Us Yours

INSURANCE AND REAL ESTATE
WANT TO BUY OR SELL?
SEE US FIRST.
C. D. BARTHLOMEW
CENTRE HALL, PA.

Midway Between

Winter and Spring. Freshen up the Winter clothes. Buy that new pair of Shoes that you've been talking about. There is nothing quite so satisfactory as that "well dressed" feeling.

Dresses * Shoes * Coats * Hats * Hose

Anything to wear--we have it. At the right price--and best of all, the right thing.

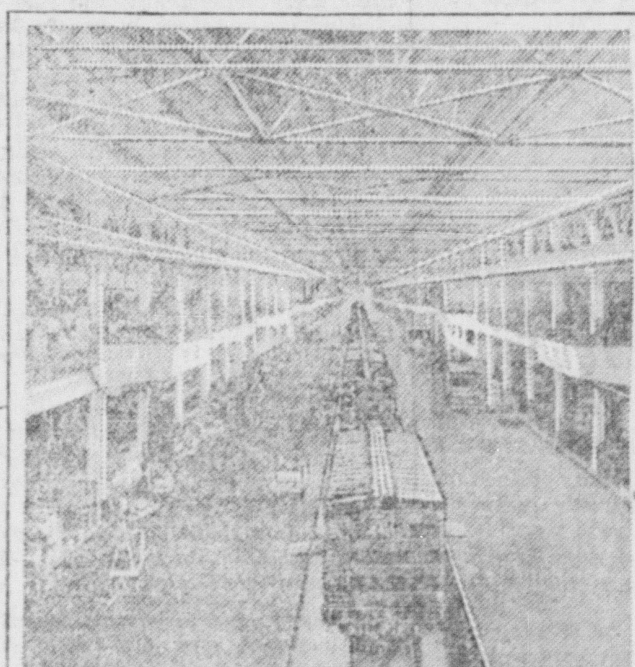
GREEN STAMPS WITH EVERY PURCHASE

NIEMAN'S DEPT. STORE

"WHERE YOUR DOLLARS GO FARTHEST"

MILLHEIM

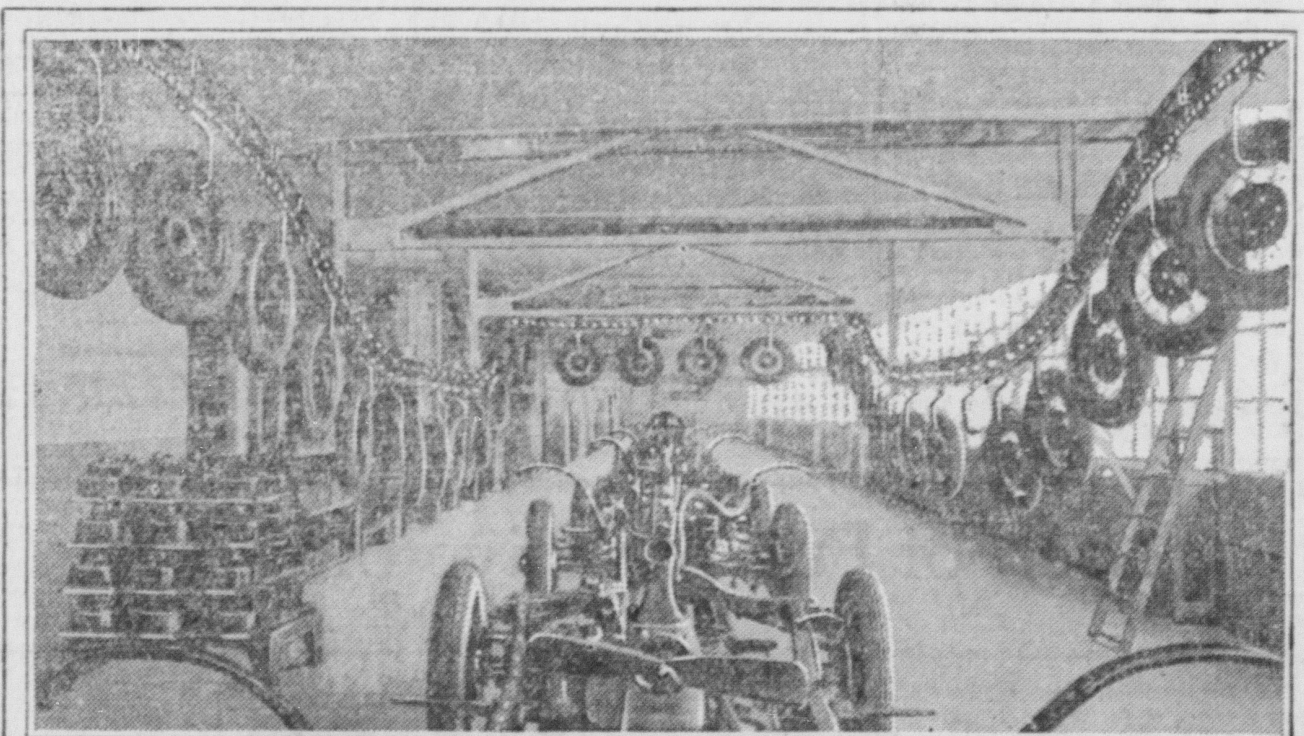
Conveyors Carry Ford Car Parts



Trains unloading at the plant.



Bodies starting through the shop.



Conveyors carry wheels with mounted tires over a line on which cars pass to completion.

The highly important part played by conveyor systems in all Ford Motor Company manufacturing and assembly plants is graphically shown in the above three pictures taken in the recently opened Edgewater, N. J., plant. One of the pictures shows how parts may be unloaded from freight cars within the plant only a few feet from the various assembly lines. Another picture shows automobile bodies starting their trip on a conveyor while

the third view is of the conveyor system used to bring wheels to the chasses which are also moving on a conveyor. As indicated in the picture, a constant flow of wheels on which the tires have already been mounted moves around and over the chassis assembly line. As a chassis enters the section, workers, in groups of four, each take a wheel from the hooks and fasten it to the chassis.

from the general fund to the motor license fund for road purposes.

Taking over 20,000 miles of township roads immediately by the State on an equitable basis of 25 to 27 1/2 per cent. of the township roads of each county.

Collection of the gasoline tax at its source instead of from retailers.

Reduction of motor car operators' fees from \$2 to \$1 and reduction of \$5 in all passenger car registration fees.

"I recommend to the General Assembly that it shall take over as State roads 20,000 miles to township roads, to be maintained by the commonwealth and to be improved with an all-weather surface as rapidly as funds can be made available. I make this recommendation, first, because if enacted into law it will be the greatest step ever taken in Pennsylvania, or in any other State, toward taking the country people out of the mud. Secondly, because it is a practical measure of farm relief which will lift from the backs of the township taxpayers, who are mainly farmers, a total of not less than \$10,000,000 a year.

Under the head of schools the governor says: "In recognition of the peculiar relation of State College to the commonwealth, the budget carries a recommended increase of 20 per cent for maintenance, together with \$500,000 for a new dairy building, \$400,000 for a domestic science building, and \$40,000 for a surface sewage system.

Easy "Basic Patents"

The term "basic patent" is used chiefly with such the same significance as "obvious patent"—that is to say, its having reference to a patent covering an invention which represents a marked advance in some art as when an inventor for the first time accomplishes a certain result. There have been a good many basic patents granted from first to last, but no precise enumeration is possible, since opinions vary as to which patents are entitled to be so classed. We note Bell's patent on the telephone and Howe's patent on the sewing machine employing an eye-pointed needle. There are basic patents now in force for inventions relating to wireless, radio and other subjects.—Washington Star.

WEN QUINNED.
"We want a man for our information bureau," said the manager. "He must be a wide-awake fellow and accustomed to complaints."
"That's me," replied the applicant.
"In the father of twins."

Goods will not move themselves out of a store automatically, without some force making them move. You need to hitch them up to the power of ad-

Keen Enjoyment for Smokers of Pipe and Cigarettes
15¢
RALEIGH
SMOKING ENJOYED PIPE AND CIGARETTES

PUBLIC SALE EXPRESS LOAD OF WESTERN HORSES
THURSDAY, FEBRUARY 12 AT CENTRE HALL SALE BARN.
28 Head--Young and Broke
2 Sorrels, mare and gelding, 5 and 6 yrs., wt. 3300; 2 Brown Mares, 7 and 8, wt. 3250; 2 Sorrel Mares, 6 and 7, wt. 3150; 2 Buckskin Geldings, 5 and 6, wt. 3150; 2 Sorrel Geldings, 5 and 8, wt. 3350; 2 Roan Mares, 3 and 5, wt. 3050; 2 Black Mares, 5 and 6, wt. 3100; 2 Chestnut Mares, 6 and 7, wt. 3200; 2 BLACK MULES, Mare and Jack, 4 and 5, wt. 2850; 2 Grays, Mare and Gelding, 7 and 8, wt. 3300; 2 Gray Geldings, 3 yrs. old, wt. 3100; 2 Bay Mares, 6 yrs. old, wt. 2900; Black Gelding, 5 yrs. old, weight 1750; Bay Mare, 5 yrs. old, wt. 1650; Gray Gelding, 5 yrs. old, wt. 1650; Bay Gelding, 7 yrs., wt. 1600.
A real load of Horses, ready to go to work,—and gentle.
Sale Starts at 1:30 P. M.
E. M. SMITH, Auct. ROBERT DODDS

MILE-A-MINUTE MARTY

—by—

Decker Chevrolet Co., Bellefonte, Pa.

GEE, MARTY, YOU'LL NEVER GET THRU! LOOK AT ALL THOSE CARS STUCK IN THE DRIFTS!
LISSEN, KID—WE TOLD 'EM WE'D BE THERE FOR XMAS—AN' THIS GOOD-OLE CAR HAS ENOUGH POWER TO GET US THERE, BLIZZARD OR NO BLIZZARD!
GEE, POLLY, YOU'RE RIGHT!—LOOKS AS IF WE'VE GOT TO DO THE LAST FEW MILES IN SECOND—GUESS THIS CAR ISN'T AS POWERFUL AS
DECKER CHEVROLET CO. SAID IT WAS!
GOT HER, TED, JIM!
MARTY DOESN'T KNOW IT!

Decker Chevrolet Co.

Phone 405 BELLEFONTE, PA.