

THE CENTRE REPORTER
ISSUED WEEKLY.

CENTRE HALL, PENNA.

SMITH & BAILEY, Proprietors.
S. W. SMITH, Editor.
EDW. E. BAILEY, Associate Editor and
Business Manager.

Entered at the Post Office in Centre Hall
as second class mail matter.
TERMS.—The terms of subscription to
the Reporter are \$1.00 a year, in advance.
Display advertising rates made known
on application.

SUNDAY CHURCH SERVICES

PENNS VALLEY LUTHERAN CHURCH
(Rev. S. F. Greenhoe, Pastor.)

Farmers Mills, 10:30 A. M.
(Communion Service.)
Georges Valley, 2:30 P. M.
(Communion Service.)
Preaching services at—
Centre Hall, 7:30 P. M.

CENTRE HALL REFORMED CHURCH
(Rev. Delas B. Keener, Pastor)

Centre Hall—
1:30—Sunday School.
2:30—Church Service.
Tusseyville—
9:30—Sunday School.
10:30—Church Service.

EVANGELICAL
(Rev. W. E. Smith, Pastor.)

Spring Mills—9:30 A. M.
Bethesda—10:45 A. M.
Locust Grove—7:0 P. M.

METHODIST EPISCOPAL
Rev. H. A. Frays, Pastor.

Spring Mills—
9:00—Morning Worship.
10:00—Sunday School.
Centre Hall—
9:30—Sunday School.
7:30—Services in charge of W. C. T. U.
Eleventh anniversary of the 18th
Amendment.
Sprucetown—
10:00—Sunday School.
11:00—Morning Worship.

**REPORT OF CENTRE COUNTY
HOSPITAL FOR DECEMBER**

At the monthly meeting of the Board
of Trustees held at the hospital Tues-
day evening, the following report was
submitted and approved:

Patient Department.
Number patients in hospital Dec. 1 41
Number patients admitted during
month 79
Number births during month 6

Total number patients 126
Number private and semi-private
patients, 46; number patient days 467
Number ward patients, 80; number
of patient days 863

Total number patient days 1329
Number patients discharged dur-
ing month 85
Number deaths during month 3
Number remaining under treat-
ment Dec. 31, 1930 38
Greatest number patients any day
in hospital 53
Least number patients any day in
hospital 34

Total number patient days 1329
Average number days per patient 10
Average number patients per day 43

Cash Receipts.
Union Thanksgiving offering—
(Boalsburg) \$ 11.21
Thanksgiving offering (Rebers-
burg) 5.10
Thanksgiving offering (Belle-
fonte) 126.11
Thanksgiving offering (Howard)
5.86
Zion Lutheran S. S. (Mad-
sonburg) 2.30
Mr. and Mrs. T. M. Fishburn
State College 5.80
Miss Anna McCoy, upkeep room 50.00
Centre County Soldiers and
Sailors Endowment Fund 75.00
Miss Mary McQuiston, upkeep of
room, Endowment Fund 50.00
Mary A. Harris, upkeep of
room, Endowment Fund 25.00
Centre County Hos. Auxiliary 142.37
Centre County Hospital Mem-
bership Fund 850.00
Receipts from patients 2680.39

Total receipts \$4023.34
Bank balance Dec. 31 637.07
Total \$4660.41
Disbursements 3853.19
Ban balance Dec. 31, 1930 \$ 612.22

FARM CALENDAR

**TIMELY REMINDERS FROM
PENNSYLVANIA STATE COLLEGE
SCHOOL OF AGRICULTURE**

Grow Hay Crops—
Thin stands of young seedling some-
times can be thickened by sowing more
seed early in the spring. Clover or alf-
alfa is harrowed in or drilled in with
a disk drill. Clover or alfalfa sown
in the spring should make a cutting
of hay by late summer.

Use Wired Perches—
Wire netting made of 16-gauge wire
and 1 1/2-inch mesh has been found
satisfactory for use between the chick-
en roosts and the dropping boards. It
keeps the chickens off the boards and

catches any eggs laid by the birds on
the perches.

Trucks Move Produce—
Motor trucks are being used more
and more to transport fruits and veg-
etables from the place of production
to market. Products have been carried
600 miles this way, but the average
for long trips is 100 miles.

Learn About Meats—
Whether meat is purchased at the
store or butchered at home, "Market
Meats" a circular sent free to those
who request it by the Agricultural
Extension Service, State College, Pa.,
will be found helpful. It describes
cuts of beef, pork and mutton, gives
recipes, and tells how to cure meats.

Keep Eggs Clean—
Use of shavings in the nests helps
to keep eggs clean. In a comparison

of shavings and straw as nest mater-
ial, one-fourth of the eggs laid in
straw were dirty, while 90 per cent of
the eggs laid in shavings were clean.

BOALSBURG ITEMS.

Mrs. Bitner, of Tusseyville, is spend-
ing some time at the home of her
brother, Samuel Wagner, while Mrs.
Tressler is visiting friends at State
College.

Mr. and Mrs. H. F. McGirk of Belle-
fonte, were week-end guests of Miss
Anna Dale.

Miss Rachel Segner is spending some
time at State College.
The body of John Stantun, of Altoo-
na, was brought to Boalsburg Monday
afternoon for interment in the local
cemetery.

Mr. and Mrs. Grant Charles and
Prof. E. B. Pitts, of State College, at-
tended services in the Lutheran church
Sunday.

Mr. Farmer, of Avon, has purchased
a lot from A. L. Lee and built a gar-
age, expecting later to erect a resi-
dence.

Miss Mary Wagner spent part of
last week with her aunt, Mrs. J. F.
Harkins, at State College.

Clement G. Dale, of Pleasant Gap,
transacted business in town on Thurs-
day.

Card of Thanks.

The undersigned takes this method
of expressing sincere thanks to neigh-
bors for all kindnesses shown her dur-
ing the illness and subsequent death
of her husband.—Mrs. J. H. Horner.



This Week-End, JANUARY 16 & 17, We Offer: Another
Carload of those Delicious Tree-Ripened Florida Oranges
PICKED AND SHIPPED HERE IN FIVE DAYS.
We are offering this fine fruit in Bulk to Save Freight, Packing House Charges, Boxing Charges and to get them
Ripe from the tree to you within ten days' time.

Bushel - - \$2.25 :: Peck - - - \$0.63 :: Half Peck - - - \$0.33

SELECTED EGGS, DOZEN	25c	LUSCO ASSORTED FRUIT PRESERVES—	
CLOVER FARM ALL-PORK SAUSAGE	25c Lb.	BIG 2-LB. JAR.....	33c
For Quality Canned Fruits and Vegetables you Should Insist on CLOVER FARM BRAND.			
HERSHEY'S CHOCOLATE KISSES	35c LB.	HERSHEY'S SWEET MILK CHOCOLATE.....	29c LB.
FULL POUND COCOA	25c		
P & G SOAP—6 CAKES FOR	23c	FAIRY SOAP—5 CAKES FOR	23c
BIG SOLID HEADS ICE BERG LETTUCE	10c	MANCY HALL, CAROLINA SWEETS.....	3 LBS. 25c
CLOVER FARM CAKE FLOUR—FULL SIZE BOX	25c	CLOVER FARM VACUUM COFFEE—	
		THE SUPREME CAN OF COFFEE	39c

A Clover Farm Good-Will Offer:
A good Physician friend of Clover Farms has com-
mended us on the Healthful Quality and Economy of these
Fine Tree-Ripened Oranges and told us that they were very
beneficial in many sickrooms at this season of the year, but
he added that due to the depression and unemployment, he
had several cases that were unable to buy even at our low
prices. So we say: ANY PRACTICING PHYSICIAN IN
THE TERRITORY SERVED BY CLOVER FARM STORES
WHO WILL DROP A LINE TO CLOVER FARM HEAD-
QUARTERS, TYRONE, PA., and give us the name or names
of distressed or needy cases under his care, that would be
benefitted or relieved by an Orange Juice Diet, we will deliver
to the given address a half-bushel basket of this fine fruit
FREE OF CHARGE.

THERE IS A CLOVER FARM STORE NEAR YOU.

THE NEW FORD

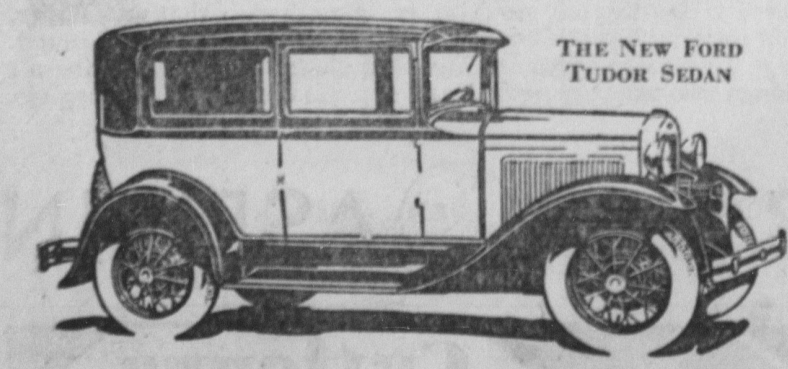
**Everything
you want or need
in a motor car**

THE more you see of the new Ford, the more you
realize that it brings you everything you want or
need in a motor car. . . . And at an unusually
low price.

Its substantial beauty of line and color is em-
phasized at a glance. Long, continuous service em-
phasizes the value of its simplicity of design and the
high quality that has been built into every part.

The new Ford accelerates quickly and it will
do 55 to 65 miles an hour. It is an easy-riding car
because of its specially designed springs and four
Houdaille double-acting hydraulic shock absorbers.
It has fully enclosed four-wheel brakes and
the added safety of a Triplex shatter-proof glass
windshield. Operation and up-keep costs are low
and it has the stamina and reliability that mean
thousands of miles of uninterrupted service.

See the nearest dealer and have him give you
a demonstration ride in the new Ford. Check up
every point that goes to make a good automobile
and you will know it is a value far above the price.



LOW PRICES OF FORD CARS
\$435 to \$660

F. O. B. Detroit, plus freight and delivery. Bumpers and spare tire extra
at small cost. You can purchase a Ford on economical terms through
the Authorized Ford Finance Plans of the Universal Credit Company.



**CENTRE COUNTY VOCATIONAL
PUPILS CARRY OFF HONORS**

Centre County Vocational pupils a-
gain place very high in the State Vo-
cational Project contest held each year
in connection with the State Farm
Products Show.

Centre county has not only placed
a large number of boys on the winner's
list but the work these boys have
done to earn these places is of the
highest quality and is representative
of the type of work being done in
the vocational classes.

Ten places are awarded in each of
different classes of projects. All of
the vocational boys in Penna. taking
a particular type project, of sufficient
size, are entered in their particular
classes, so to place among the first
ten in the State of Pennsylvania is
an accomplishment to be proud of.

The Centre county boys won only
two firsts, but the number of other
places won pulled them up among the
leaders.

Gregg Township Vocational School
placed second among all schools of the
State. They placed in the majority of
the various classes. Both the Harris
Township Vocational School and the
County Supervisor has winners.

The winners from Gregg Twp. Voca-
tional are given elsewhere in this issue.
Harris Twp. Vocational winners were:
Albert Lightly, 3th in Dairy management;
Fred Kline, 4th in Poultry, and
Charles Wright, 8th in Truck. From
Howard, Paul Sheets placed 5th in
Home Improvement; from Worth Twp.,
Wm. Lyle placed 8th in Home Im-
provement.

All winners of places in the State
contest have been asked to come to
Harrisburg to receive their awards.
Most of the Centre county boys will go
to Harrisburg.

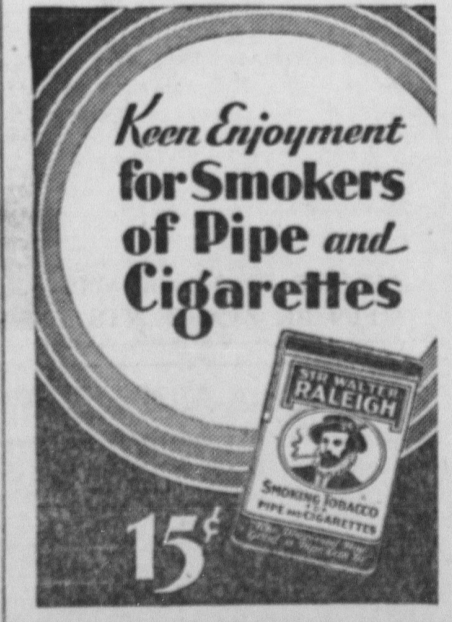
The committee has made special ef-
forts to get as many vocational pupils
to come to the show as is possible.
Centre county will be represented by
some 45 Vocational boys and girls.

In addition to the Project contest, the
various Vocational schools and county
supervisors over the State enter exhib-
its showing different phases of agricul-
tural activities. The committee in
charge selected seven exhibits to be
erected for the show. Centre county
was fortunate enough to have their
entry selected as one of those to be
placed in the show building.

responsible for the planting of 1088
shrubs on four school yards, eight
home yards and one public yard.

The young people always look for-
ward to the Farm Products Show. It
is an educational institution in itself,
and the time used in going to such an
activity is well spent.

Look at the label of your paper this
week. If you paid on subscription, cred-
it should be shown. If the figures in-
dicate indebtedness to us, we would ap-
preciate a remittance.



Take Your Medicine With You
Chocolate coated tablets. Just as effective
as the liquid. 98 out of 100 report
benefit.
Sold at drug stores
**Lydia E. Pinkham's
Vegetable Compound**
BORN IN ENGLAND 1842. DIED IN U.S.A. 1905.

*We Invite You
to Call and
See the
NEW 1931
DODGE CARS*

In Both the "6"
and "8" Models.

We have these Cars on our Gar-
age floor, and we know you will
be delighted with the new fea-
tures—strictly Dodge features—
which make this year's models
so outstanding.

~~~~~  
Come In At Any Time.  
~~~~~

Hagan's Garage
Centre Hall