

**THE CENTRE REPORTER**  
ISSUED WEEKLY.

CENTRE HALL, PENNA.

**SMITH & BAILEY, Proprietors.**  
S. W. SMITH, Editor.  
EDW. E. BAILEY, Associate Editor and  
Business Manager.

Stored at the Post Office in Centre Hall  
second class mail matter.

**SUNDAY CHURCH SERVICES**

**PENNS VALLEY LUTHERAN CHURCH**  
(Rev. S. F. Greenhoe, Pastor.)

Georges Valley—10:30 A. M.  
Farmers Mills, 2:30 P. M.  
Centre Hall—7:30 P. M.

Sunday School at 9:30. (This is a  
change from the pulpit announcement)

**CENTRE HALL REFORMED CHURCH**  
(Rev. Delas R. Keener, Pastor)

Centre Hall—  
9:30 Sunday School.  
10:30—Church Service.

**Evangelical**  
(Rev. W. R. Smith, Pastor.)

Bethesda—9:30 A. M.  
Spring Mills, 10:30 A. M.  
Locust Grove—2:30 P. M.

Holy Communion at all appointments.

**METHODIST EPISCOPAL**  
(Rev. Harry W. Newman, Pastor.)

Sprucetown—9:30 A. M. Worship.  
Sacramental Service and Reception of  
New Members, 10:30, S. S.

Centre Hall—10 A. M. S. S. 11 A.  
M. Worship and Sacramental Service.

Spring Mills—9:30 A. M., S. S. 7:30  
P. M., Worship and Sacramental Ser-  
vice.

Smulton—Evangelistic services will  
commence Monday evening, Oct. 14, at  
7:30 and continue for two weeks.

**At LINDEN HALL.**  
(Miss Sarah Eeroyd, Pastor.)

Sunday School at 2 P. M. Preach-  
ing at 7:30.

Sunday School Rally, Oct. 20th.

**Official Statement of**  
**THE CENTRE REPORTER**  
Oct. 1, 1929.

Title of Publication—The Centre Reporter  
Place of Publication—Centre Hall, Pa.  
Names of Editors—S. W. Smith, Edw. E. Bailey  
Names of Publishers—S. W. Smith  
—Edw. E. Bailey  
Signed,  
S. W. SMITH  
EDW. E. BAILEY.

Sworn before me this 1st day of October,  
1929.  
R. M. SMITH,  
Postmaster.

**BOY STRUCK BY CAR—**  
**RIGHT LEG BROKEN**

Paul Mensch, a lad of six years, was  
struck by a car near his home at  
Spring Mills, resulting in his right leg  
being broken above the knee. Harry  
Leitzell, of Millheim, who was making  
his regular rounds selling meat, had  
driven to the front of the Brigot Bit-  
ner home, north of the silk mill bridge,  
and on leaving backed his car. While  
doing this, Paul, who with other chil-  
dren was playing about the place, ran  
back of the car and was hit. No  
blame is placed on Mr. Leitzell, as no  
negligence entered into the incident.

Paul is a son of Harry Mensch, of  
Milton, but makes his home with his  
uncle and aunt, Mr. and Mrs. Bitner,  
and grandmother, Mrs. Roseman.

**STATE COLLEGE GETS**  
**INDIAN SKELETON**

What is expected to prove another  
important link in Pennsylvania's early  
history was the recent finding of three  
Indian skeletons in highway excava-  
tions at Milesburg, Centre county. On-  
ly one of the skeletons was recovered  
intact by the Pennsylvania State Col-  
lege geologists and paleontologists. It  
has been moved to State College, rest-  
ing in the same earth in which it was  
found.

Representatives of the Pennsylvania  
Archeological Survey inspected the  
skeleton and the site upon which it  
was found, the edge of the front yard  
of a Milesburg resident. It is known  
that an Indian village once stood at  
the junction of Spring and Bad Eagle  
creeks, only a few hundred yards  
from where the skeleton was found.  
Archeologists said the skeleton was  
that of a man about 24, probably Iro-  
quois, who had suffered with rheu-  
matism as shown by pits in the hip  
joints. The body was buried with  
hands and knees drawn up under the  
chin, and a flint arrow head in one  
hand indicates that the skeleton might  
be over 200 years old. The exhibit is  
being prepared for placement in the  
new mineral industries building at  
State College.

**Jean Gros' Marionettes.**

Jean Gros' French Marionettes which  
are to appear at the Richelieu Theatre  
October 30, sponsored by the Bellefonte  
public schools, bring not only Uncle  
Wiggly for the children's matinee, but  
also an illuminated Marionette Ballet,  
utilizing four Aesop's Fables along with  
amplified music and the spoken words,  
and a special play of "Slippy" by  
Percy L. Crosby in four scenes.

Sixty marionettes made to move  
with true life-like gestures by fifteen  
hundred strings make for an original  
evening. This is the eighth transcon-  
tental tour of the French Marion-  
ettes.

George Rimmer, the local garage  
man, and Thomas Williams, of Pleasant  
Gap, attended the Bloomsburg fair  
last week.

**Special Services in Lutheran Church.**

Both the periods for Sunday school  
and preaching service in the Luther-  
an church, Sunday afternoon, were  
given over to a group of members and  
pastor of the Evangelical church in  
Lewisport. D. C. Shank, a traveling  
salesman, gave a review of the Sun-  
day school lesson, and Rev. Dick, pas-  
tor, delivered a sermon on "The bor-  
rowed Axe."

An orchestra of twelve pieces con-  
ducted by Mr. Wagner, and a male  
chorus of eighteen furnished delight-  
ful music, making music a most at-  
tractive feature of the program.

An outstanding number in music  
was the rendering of "The Holy City"  
on a saxophone by Mr. Snyder, the  
orchestra leader.

Many of the visitors were accom-  
panied by their wives. The main audi-  
torium was filled, obliging a number  
to be seated in the Sunday school room.

**Oil and Gas Leases.**

During the past few weeks an effort  
was made on the part of two gentle-  
men—one from Oklahoma and the other  
from the Pittsburgh district — to  
lease a number of farms about Fotters  
Mills for prospecting for gas and oil.  
The lease, from what can be learned,  
is very similar in provision to the  
standard option lease, and give the  
land owner one-eighth. It appears op-  
tions were obtained on three farms,  
the owners being W. R. Hosterman,  
Mrs. Emma Emerick and Maynard  
Barger. The parties were on the  
grounds at various times recently, but  
are not in that section at this time.

**Singing School.**

Luther Musser will open a singing  
school in Centre Hall, provided suffi-  
cient support is given the movement.  
A meeting will be held in the High  
school building Friday evening, where  
young people, whether school pupils or  
not, may ascertain conditions. The tu-  
ition will be but one dollar for fifteen  
nights.

**Bear Robs Bee Scap.**

A she bear and her cub cleaned up  
the contents of one of four bee hives  
kept by Wallace White, near Linden  
Hall. The bees are kept in the farm  
orchard near the house, and on Satur-  
day morning one of the scaps was no-  
ticed to be thrown over, and other-  
wise disturbed. Examination reveal-  
ed bear tracks. Saturday morning the  
new bee hive was found to be torn to  
pieces and all of the contents gone.  
The bears were not seen, but the rob-  
bers left no mistaken signs of their  
kind. To avoid further loss Mr. White  
was informed by the game warden  
that a lighted lantern kept there would  
likely avoid further loss to him by the  
marauders.

**Evangelistic Services Close.**

The Evangelistic services which had  
been held at the Sprucetown Metho-  
dist church for the past three weeks,  
came to a close on Sunday night. The  
pastor, Rev. H. W. Newman, was as-  
sisted in the work by a number of lo-  
cal ministers, delivering able sermons.  
The music during the last two weeks  
was in charge of Miss Alma L. Bud-  
man, of Muncy, Pa., and her leader-  
ship as a director of music was done  
in a most commendable way, and her  
solo work was very effective. The  
meeting has been a great uplift spiri-  
tually to the community. The co-oper-  
ation of the church people, in making  
the meetings worthwhile, was splen-  
did. Notwithstanding the busy season  
of the year, the attendance was ex-  
cellent.

There were about eighteen decisions  
made for the Christian life.

**Boalsburg Wins at Soccer.**

Last Friday, Boalsburg defeated Port  
Matilda, 4 to 0, in a fairly interesting  
game of soccer ball, under adverse  
conditions. One end of the field was  
partly covered with water and the  
weather was cold.

For Boalsburg, Gingerich L. E. F.  
Bohn, I. L. Mothersbaugh, I. R., and  
Addleman, C. Halfback, did good work.  
For Port Matilda the center forward  
on offense and the two fullbacks on  
defense were the outstanding players.

**Banking Hours.**

Both banks in Centre Hall will ob-  
serve Columbus Day, Saturday, Octo-  
ber 12, by being closed in the forenoon  
and afternoon, but will be open in the  
evening from 7 to 9.

Many people inquire from our local  
banks as to the banking hours on Sat-  
urday, the impression being that the  
winter schedule is now in effect. The  
local banks will not put into effect  
the winter schedule until the first Sat-  
urday of December. That means that  
they will be closed Saturday afternoon  
and open from 7 to 9 on Saturday eve-  
ning during the months of October  
and November.

**Ask \$10,000 for Park Equipment.**

At the coming November election  
State College residents will vote on the  
question of increasing the borough's  
indebtedness from \$94,000 to \$104,000.  
The funds are to be used for the  
equipment of the borough park with  
concrete swimming pool, bath houses,  
band shell and open-air theatre, shel-  
ter houses and picnic centers.

**Sodding to Prevent Erosion.**

Laying of 70,000 square feet of sod  
along the State highways throughout  
Pennsylvania has just been completed  
by the Department of Highways, John  
W. Keller, forester, reports. The sod  
was placed at the entrance to culverts,  
and on steep slopes where excessive  
erosion had caused great expense and  
inconvenience.

Sodding is done under the super-  
vision of the assistant division fore-  
sters and the sod is purchased locally  
wherever obtainable. This year the  
average cost of laying the entire quan-  
tity was \$0.72 per square foot. The  
largest quantity was laid in Division  
6 where 21,000 square feet were put  
down.

**C. H. H. S. Defeats E. P. V. H. S.**

Coach J. R. Haney's soccer team of  
Centre Hall High school defeated  
Coach Victor Haney's soccer team of  
the East Penns Valley High school in  
a rough game, Tuesday evening at  
Millheim, by the score of 1 to 0. The  
home team started the game by mak-  
ing it rough and the visitors fell in  
line to do their part.

In the first three quarters of the  
game both teams showed equal power,  
but in the last quarter Centre Hall  
got together enough to score the only  
goal of the game. Following is the  
line-up:

E. P. V. H. S.	Position	C. H. H. S.
Steedenkast	Goal	Walker
Eisenhuth	R. Full	Luse
Mark	L. Full	Wert
Zimmerman	R. Half	Schaffer
Beahm	C. Half	Coldron
Boob	L. Half	Lutz
Bright	R. End	Jordan
Hazel	R. Inside	Hartley
Stover	Center	Bradford
Springer	L. Inside	Spyker
Weaver	R. Inside	Scott

Substitutions: Glasgow for Springer;  
McClellan for Scott.

Centre Hall will meet Port Matilda  
on Friday of this week.

**Gregg Twp. Vocational Wins Two.**

Gregg Township Vocational School  
remains undefeated in soccer as the  
result of two victories during the past  
week. Last Friday they defeated  
Centre Hall High 3 to 0, and on Tues-  
day punished Port Matilda 5 to 0.

**REBERSBURG.**

Work was begun on the new school  
rooms on Tuesday, and will be rushed  
in order to complete one room for the  
4th and 5th grades, whose pupils are  
being conveyed to a school room at  
Madisonburg, owing to the crowded  
condition in the main building.

Mr. and Mrs. Fetter, from Crozter-  
ville, and Mr. and Mrs. Mark Lepley,  
from Winfield, spent Sunday at the  
Calvin Weaver (Sr.) home.

Mrs. Emma Shehan, from New York,  
is visiting among relatives.

Mrs. Charles Bierly, who had been  
sick the past week, has improved.

On Friday, the M. T. H. S. soccer  
team and the girls' dodge ball team  
went to Hubbersburg and defeated both  
teams on their home grounds.

Mrs. John Moyer spent a week in  
Bloomsburg with her daughter, Mrs.  
Ray Marsteller.

Paul Bierly, who had been quite ill  
for several weeks, is improving rapid-  
ly and will soon be back in school.

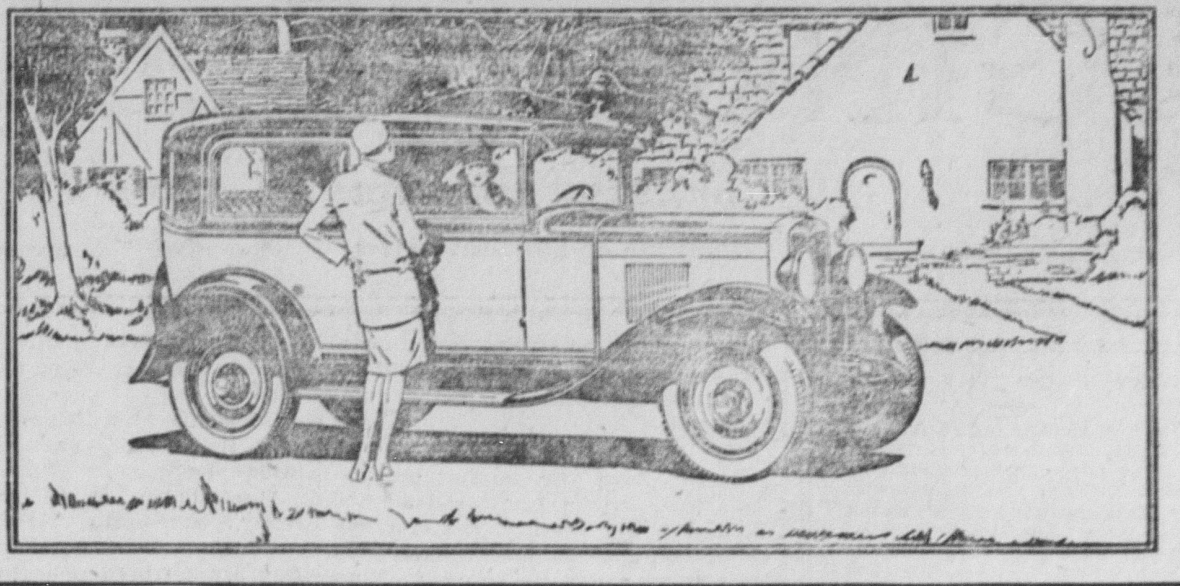
Wallace Weaver and wife spent the  
week-end with Mr. Weaver's parents,  
Calvin Weavers.

Curtis Weaver, wife and daughter,  
of Reading, were at the Calvin Weaver  
(Sr.) home for a day.

Phyllis Page, who is a student in the  
Williamsport Commercial College, was  
home over the week-end.

Mrs. Grace Deitzell went to Johns-  
town a few days ago to be with her  
sister, Mrs. S. M. Goodhart.

**THE CHEVROLET SIX.**



for Economical Transportation



**In Design - - -**  
**In Materials - - -**  
**In Workmanship**

**Built to the High-  
est Standards! - -**

**DECKER CHEVROLET CO. Bellefonte**  
**HOMAN MOTOR CO. - - Centre Hall**

A SIX IN THE PRICE RANGE OF THE FOUR

Most people realize that the New  
Chevrolet is a Six in the price range  
of the four. But not everyone knows  
what a really wonderful Six it is!

The Chevrolet engineering staff spent  
more than four years in the de-  
velopment of the Chevrolet Six.  
Materials are selected from the  
world's finest markets and, taken  
altogether, there are nine thousand  
inspections during the car's pro-  
duction and assembly!

The result is exactly what you'd  
expect—*quality in design, in ma-  
terial and in workmanship that  
assures years of dependable and  
satisfactory service!*

Come in today. We want you to see  
and drive this car—for it will give you  
a new idea as to what the buyer of  
a low-priced car can now expect for  
his money!

The Roadster, \$525; The Phaeton, \$525; The Coach,  
\$595; The Coupe, \$595; The Sport Coupe, \$645; The  
Sedan, \$675; The Imperial Sedan, \$695; The Sedan  
Delivery, \$595; Light Delivery (Chassis only), \$400; 1 1/2  
Ton Truck (Chassis only), \$545; 1 1/2 Ton Truck (Chas-  
sis with Cab), \$650. All prices f. o. b. factory, Flint,  
Michigan.

Consider the delivered price as well as the list (f. o. b.)  
price when comparing automobile values. Our dealers'  
delivered prices include only authorized charges for  
freight and delivery, and the charge for any additional  
accessories or financing desired. (302-30)

If you are not entirely satisfied, money will be cheerfully refunded

**Specials for Friday & Saturday**  
**at Abrahamson's Dept. Store, Millheim**

**BOYS' \$15. 4-PIECE SUITS**

New Fall Suits, All Wool Durable  
Fabrics, Patterns and Colors.  
Excellent tailored, Coat, Vest and  
Two Pair Trousers—Kneekers and  
Long Trousers. Sizes 10 to 18. Special  
**\$9.95**

**WOMEN'S \$25 DRESS COATS**

Smart Models—Fine Broadcloth with  
Baby Seal collars and cuffs, Sizes 36  
to 46. Special—  
**\$14.95**

**\$6.50 GIRLS' RAIN COATS**

Sizes 8 to 16. Lined. Colors Black,  
Tan, or Red; guaranteed rain-proof.  
**\$4.95**

**\$4 LADIES' SHOES AND OXFORDS**

A wonderful selection in all leathers.  
Guaranteed \$4.00 values; special—  
**\$2.88**

**\$35.00 Men's Blue Serge Suits**

New Fall models. Fabric is guar-  
anteed for color and wear. Verified  
price is \$35.00 Special—  
**\$22.50**

**Just Received-- A Full Line of Men's Overcoats and Topcoats**

Strictly all wool and hand-tailored.  
Prices from  
**\$15 to \$25**

**\$4 Men's Silk & Wool Union Suits \$2.95**

**Women's \$3.50 SMART HATS**

Women's and Misses' Felt Hats—in  
most important Fall models—large and  
small head sizes. Lending colors.  
Special—  
**\$1.95**

**\$1.50 Men's Heavy Fleece-Lined Union Suits**  
Sizes 36 to 46—  
**\$1.00**

**Men's \$6.00 Oxfords**  
Every pair guaranteed. Special—  
**\$3.95**

**Women's and Misses \$15.00 Dresses**  
In Flat Crepe, Satins, Tweeds, etc.  
Many are velvet trimmed—newest  
Fall touches. Sizes 14 to 20 and 36  
to 52. Special—  
**\$9.75**

Your Complete Satisfaction Is Our Aim. . Service and Courtesy go hand-in-hand here

**Abrahamson's Dep't Store**  
Open Evenings. **MILLHEIM**

**STORE CLOSED MONDAY,**  
OCT. 14th, on account of Re-  
ligious Holiday. Will Re-open  
at 6 P. M.