

SITUATION IN OHIO
CHEERS DEMOCRATS

Party in Solid Alignment for
Victory.

The returns from the Ohio primary of August 14 were gratifying to Chairman Raskob of the Democratic national committee and to his associates at the Democratic national headquarters in New York city.

The significant feature was the heavy Democratic vote, which exceeded that of previous primaries, and was entirely unexpected, due to the fact there really was no major contest among the Ohio Democrats.

All the candidates on the Democratic ticket had pledged themselves to support Governor Smith and Senator Robinson. The division between them was on the prohibition issue solely, but it was not clear-cut.

Martin L. Davey, who won the Governor Toyle nomination, had been in the race for two years, and his opponent, Peter Witt, had been in only about six weeks. Mr. Davey had done a great deal of campaigning, and six months ago was recognized as the winner.

Old Republican Trick
to Hoodwink Voters

The old Republican trick of attempting to deceive voters on the tariff issue is being employed in this campaign as in others. But it is a feeble effort.

Certain Republican newspapers are quoting the Democrats in their position that the tariff is not an issue, and then attempting to demonstrate that it is an issue by asserting that the Democratic party would go back to a free-trade policy.

August and November

Whatever the November results, Mr. Hoover will be able to claim a unique distinction when the guns are silenced and the trumpets stilled. He will be able to say that he is the only Republican candidate for President that ever carried Texas in August when his majority was computed by an expert accountant in Dallas at 40,000.

Smith's Record Clear

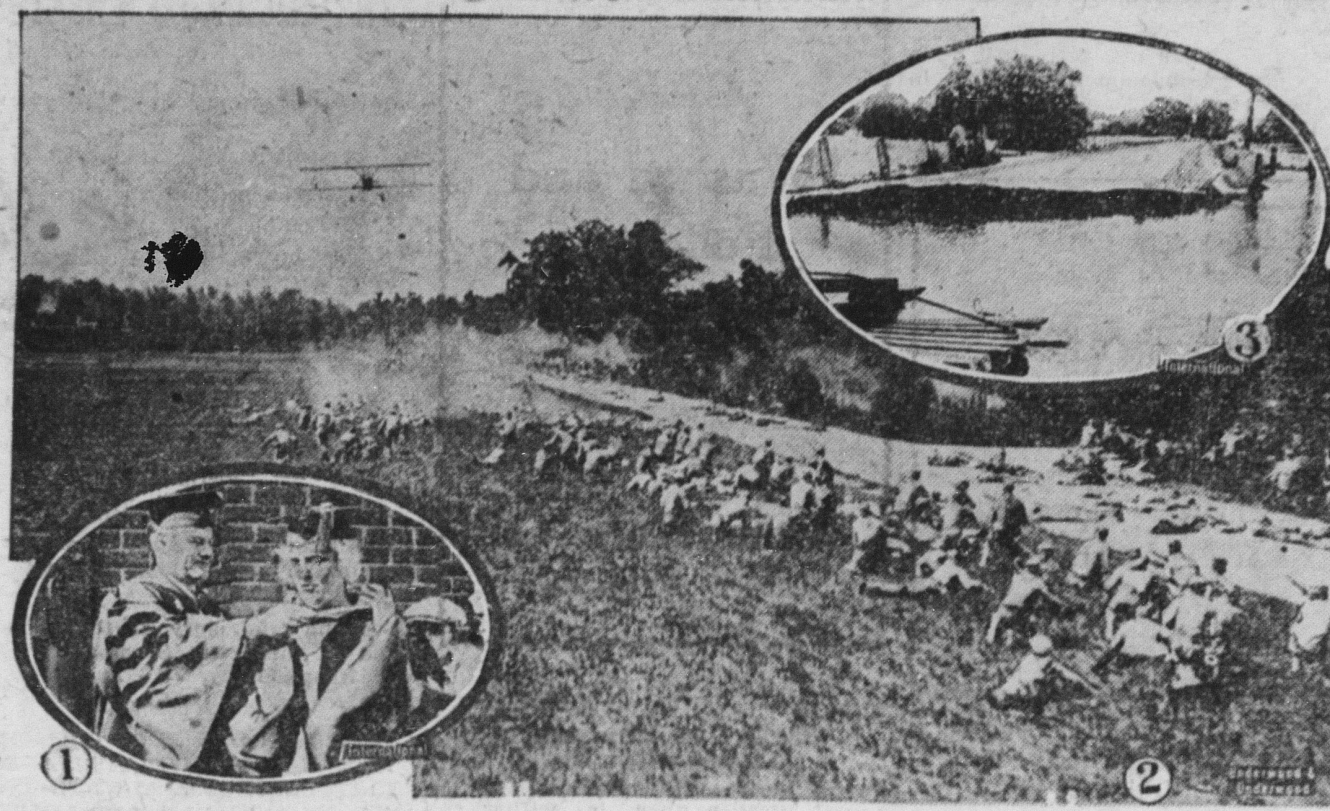
The attacks on Governor Smith's legislative record are becoming fewer and fewer, due, no doubt, to the fact that investigation demonstrates they have been without foundation.

Campaign Well on Way

Reports arriving at Democratic headquarters are greatly encouraging to John J. Raskob, chairman of the national committee, and to his associates. They indicate that the different state organizations, which are in charge of the campaign in the states, are on their toes, and that organization work will be completed rapidly.

Trying to Scare Farmers

The farmers are to be driven into the camp of Hoover, whom they hate, by this terror of Tammany which they fear. It isn't a matter of fact or argument. Ours not to reason why; ours but to run and cry.



1—Mrs. Herbert Hoover receiving honorary degree at Whittier college, California, which she attended in her youth. 2—United States navy sailors, in first shore training, "attacked" by an airplane near Norfolk, Va. 3—Scene at Milledgeville, Ga., typical of the state of the region after the disastrous rains and floods.

NEWS REVIEW OF
CURRENT EVENTS

Smith in Acceptance Speech
Is Outspoken for Change
in Prohibition Laws.

By EDWARD W. PICKARD
WITH the courage of his convictions Gov. Al Smith in his speech of acceptance frankly declared his opposition to the Eighteenth amendment and the Volstead act as they now exist.

He administered a final blow to the equalization plan with the words: "It is not intended to put the government into the control of the business of agriculture, nor to subsidize prices of farm products and pay the losses thereon, either from the federal treasury or by a tax or fee on the farmer."

COMMANDER RICHARD E. BYRD'S
ANTARCTIC EXPEDITION

COMMANDER RICHARD E. BYRD'S antarctic expedition, the most elaborate of its kind ever organized, is on its way toward the South pole.

HERBERT HASSELL and Parker
Cramer, who started to fly from
Rockford to Stockholm with stops in
Ontario, Greenland and Iceland,

Unbiased and nonpartisan opinion is that Smith in his address showed he is making his chief play for the Eastern states; that he believes the South will be solid for him, and that his hopes of winning states in the Middle West are not excessive.

GOVERNOR SMITH took time last
week to reply to the attack on
his record in the New York legisla-

HERBERT HOOVER in his progress from California to Washington stopped at West Branch, Iowa, the town of his birth, where he was accorded a fine reception by the villagers and took occasion to elaborate his views on farm relief.

He administered a final blow to the
equalization plan with the words: "It
is not intended to put the government
into the control of the business of agri-

After a conference with farm leaders in Cedar Rapids, Hoover went on to the national capital.

He was made homeless by the recent tropical storm. The crops, especially coffee, were badly damaged and the people in the stricken area were without food and medical supplies until the arrival of the United States naval tug Woodstock.

CHINA has a new trouble, but it
isn't likely to arouse great inter-
est at this distance.

ON THE EVE of the signing of the Kellogg anti-war treaty France has aroused the animosity of Italy again by holding extensive attack and defense maneuvers in the department of Haute Savoie near the Italian border.

PREMIER ELEUTHERIOS VENI-
ZELOS won an extraordinary vic-
tory in the Greek parliamentary elec-

Because of the extensive arrangements for his visits in Paris and Dublin, Secretary of State Kellogg abandoned his plan to stop in London after the anti-war pact is signed.

WALDEMARAS, premier of Lithu-
ania, having refused to negoti-
ate in Geneva his country's dispute
with Poland, the government at War-

Another notable who died last week was Viscount Haldane of Glean, who, as secretary of state for war, created Great Britain's territorial army and thus contributed largely to the success of the allies in the World war.

IF THE Interstate Commerce
commission approves the consolida-
tion of the Great Northern and the
Northern Pacific railways, there is likely
to be a new railroad grouping which
would bring into co-operation those
lines, the Southern Pacific and the
Burlington system.

NINE persons were killed and property damage amounting to hundreds of thousands of dollars was caused by a terrific wind storm that swept through parts of Minnesota and

DETONATION IS
MOTOR PROBLEM

What Happens When Gas
Vapor Fires in Cylinder
Baffles Engineers.

Just what occurs when gasoline vapor is introduced into a cylinder combustion chamber, compressed and fired is a problem that has baffled automotive engineers. However, they have made progress in its solution with the resultant increase in power and smoothness of operation found in the better cars of today.

Study of the problem is comparable to the youthful researcher who, on July fourth, holds a lighted firecracker in his hand "to see what will happen." Both the boy and the automotive engineers are dealing with something that operates practically instantaneously and with terrific force.

The principles of an internal combustion engine are well known. Vaporized gasoline is mixed with air, heated, and then drawn into the cylinder by the downward stroke of the piston.

During the two years that a new car was being designed months of effort was expended to obtain best results in combustion. Engineers worked in co-operation with the engineering staff of a large corporation and the laboratories and equipment of the corporation in solving this problem.

Design New Chamber.

This co-operative effort resulted in a new design of combustion chamber which gives high compression performance without the use of special fuel. The compression ratio is 5 to 1, or approximately 98 pounds.

Two distinctive features bring about this desired result. One is the step-like profile of the chamber roof above the pistons and the other is the curves that form the four sides of each chamber. These factors govern the rate of expansion of the burning gas within the cylinders and bring about the advantages of high compression without "roughness" or detonation.

AUTOMOBILE ITEMS

The automobile has taught us all the difference between a fifth wheel and a spare.

Nor will it still the highway roadside controversy to call them hotte dogge shoppes.

If mud and dust are permitted to remain on the finish of a new car, it will soon look like an old one.

The man who takes a nap while holding a steering wheel usually wakes up holding a harp instead.

Human Nature, Phase 40—Racing another machine on a country road at 62 miles an hour: Laughing at a hound dog for chasing a mechanical rabbit.

A Massachusetts man has been arrested for driving his car 11 years without a license. They're so hurried and impatient that they wouldn't even let the poor fellow make it an even dozen.

Shift Wornout Tires to
Front Wheels of Auto

It has been pretty definitely established that the rear right tire is the first to wear out, the rear left next, the front right next and the front left last of all.

As a result, practice has become almost general to shift the wornout tires to the front wheels with the idea of evening up the wear.

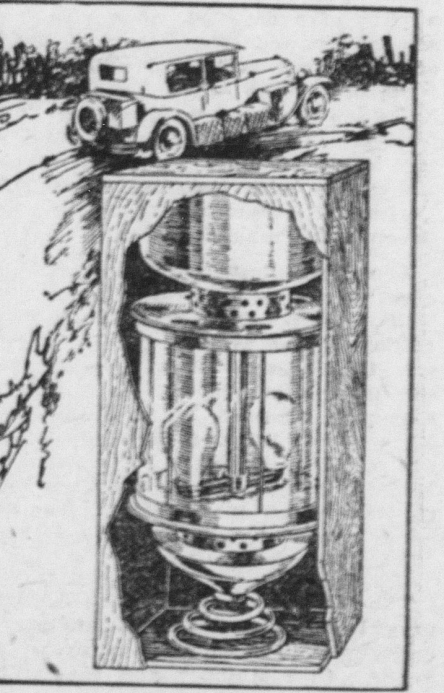
This, however, is dangerous. When a worn tire blows out on a rear wheel, while the car is traveling at a high rate of speed, the driver still has enough control of the front wheels to guide the car safely out of a dangerous skid.

When, however, a front tire lets go, and the car is moving fast, there is almost nothing the driver can do. The steering is thrown out of his control, the car is forced into a serious skid and there is great possibility of injuries to all in the car.

Rather leave a worn out tire on a rear wheel, even though it will wear down so much faster, than risk the dangers that go with changing it to the front. For greater safety, however, a tire that shows the first mark of a tread worn down to the fabric should be taken off and used only as a spare.

Useful Carrying Case
for Gasoline Lanterns

A gasoline lantern is a valuable addition to a motor camper's equipment, but many tourists object to its use because of the frequent breakage of mantles, due to the vibration of the car. The risk of breakage can be eliminated if a coil spring is provided under the dome nut of the lantern as shown, and the lantern is carried in



Gasoline Lantern Case.

an inverted position in a suitable container. The spring should be made of No. 22 or 24-gauge piano wire. The carton in which the lantern was originally packed will serve as a temporary container until a suitable carrying case can be made. The most important thing is to fit the spring and always carry the lantern upside down.

Perfect Alignment for
Front Wheels Important

Are the front wheels in perfect alignment? If there is any question about it, there is an easy way to find out. Just drive the car over a wet pavement at moderate speeds. Misalignment is certain to show itself through a tendency to skid. If the car feels as if it were skidding, or tending to swerve, even though the steering is straight ahead and the brakes are not being used, the chances are that the alignment is not right and it should be checked up by better methods or by more accurate aligning devices. Since alignment varies if there is much wear on the bushings and steering connections, it is a good plan to run over a rough road and then repeat the test on the smooth, wet paving. Make sure, however, there is no brake dragging.

COMFORTABLE BED FOR OVERNIGHT STOPS



The unique new design for auto interiors which provides a comfortable bed for those who either cannot or do not want to find hotels for the night while touring. By a few easy motions the front and rear seats are adjusted and the bed is ready.