

Community Building

Back-Yard Importance Not to Be Overlooked

One important room in the home should face the back yard. The yard is the only spot on the lot which has privacy and usually, if the owner is a beauty lover and garden enthusiast, this is the most beautiful spot as well.

Should the floor plan of the house place the living and dining rooms on one side, and the kitchen and hall on the other, have the driveway, if any, on the kitchen side, as a drive generally does not afford a good view from the living and dining-room windows and the noise of the passing motors, combined with the fumes from the exhaust, is most objectionable.

Sometimes it can be arranged to have half of the drive serve as a walk, but if this cannot be done have the walk as near to the side of the lot as possible, to provide a large unbroken lawn area.

Using this method, many leisure hours can be spent profitably and pleasantly; profitably, as there is enough time during the winter to allow one to take into consideration every little detail, thrash out every difficulty and be fully prepared to start work early in the spring.

Garage in These Days Need Not Be Eyesore

Did you ever consider how your garage, whether it is attached to your house—or detached, can be made to take on a certain degree of artistry in its appearance with a little effort on your part?

Decorative hardware, for instance, gives a pleasing look to a homely door. This hardware may be in the form of metal trimming, bolts, nail heads, or hinges.

Window boxes along the side windows of a garage give a touch of attractiveness. If awnings are used on the house they can also appear on the garage.

The newer garages are no longer boxlike affairs disfiguring the landscape. And while one may not be able to have elaborate ones, any more than an elaborate house, they may be pleasing and appealing to the eye. If detached from the house, they may be an addition to the landscape rather than a blot upon it.

Larger School Grounds

Five acres or more of land for elementary schools and ten acres or more for high schools, junior or senior, have been acquired by several large cities in California, Georgia, Indiana, Michigan, Minnesota, Ohio, North Carolina, Pennsylvania, Texas and Wisconsin as announced by the national conference on city planning through the Playground and Recreation Association of America. Sixty cities report a definite policy of providing five or more acres for elementary schools and of ten or more acres for high schools. Small cities, where unimproved ground is available at reasonable prices, make a better showing, and fifty cities of 15,000 to 125,000 population report the acquisition of five acres or more for school sites since 1915. Cost of land for schools in small cities ranged from \$500 to \$8,000, and, in some instances, to as high as \$18,000 per acre. In Chicago as much as \$30,000 per acre was paid.—School Life.

Proper Home Planning

One thing that a man should never forget when he is buying a home is that the home will be the center of his family life, probably for many years.

His children will be brought up in it and amidst its surroundings. In it his wife must do most of her work and in it both he and his wife will spend most of their leisure time.

He should, therefore, look at the different properties available and see how they measure up by these common sense, practical standards.

It is well for the family to picture itself going through its daily routine in the new house—cooking, cleaning, going to work, school, play, etc., at all seasons.

White Lights

The neighboring city of Kent turned on the lights of its Great White Way on Christmas evening and the familiar comment is that it's a grand and glorious feeling.

Kent officials responsible for the transformation have definitely placed themselves among the progressives. There is no reason why villages and towns should be excluded in the modern trend toward first-class systems of electrification, but it is a fact that too many small communities are indifferent to the advantages of excellent lighting. Kent's example should be followed by every municipality, great or small, in northern Ohio.—Cleveland News.

Give Average Costs

Average cost of single houses in 1926 is estimated at \$3,512, according to statistics compiled by Building Age which covers construction operations throughout the country. Average cost of double houses was placed at \$7,818, and multi-family houses at \$45,030.

CHAINS MAY MAKE OR BREAK TIRES

Hints for Motorists to Bear in Mind Include Advice to Avoid High Speed.

Chains take a great deal of punishment, during a winter's usage, but they return a proportionate amount to the car.

On a 30 by 4.40 tire, it has been pointed out, a cross link hits the pavement 600 times in a mile. When the car has gone 100 miles, each cross link has come into contact with hard pavement or ice 66,000 times, writes Israel Klein, in the Rocky Mountain News.

Add to this the strains of braking, starting and pulling, and little more may be expected of them.

In return for this hard usage, the chains take their revenge out of the tires, force the engine to work harder and can rip holes in the fenders.

That is, of course, if the driver is careless about them.

Put Chains on Right.

Proper attachment of chains and careful driving will afford the most possible benefit out of the chains and the least possible harm to tires, engine or other parts of the car.

In the first place, the chains should be put on right. They must be loose enough to allow them to work their way around the tires. If they are tight they will stay in one position, cutting into the casings and causing tire trouble.

A little play will cause even wear on the tires all around.

The chains, however, must not be too loose, or they'll rattle against the fenders when the car goes at any considerable speed and break easily. Furthermore, constant tapping of a chain on the same spot of the fender will eventually wear a neat hole there on your part?

Proper Air in Tires.

In the case of the new type of rubber links, on the contrary, the chains must be applied as tight as possible. The tires should be blown to their requisite pressures and then the chains may be applied tightly.

The reason for this is that rubber chains are flat and smooth, and therefore do not need to have free play around the tires. In fact, if applied loosely, they are liable to break easily.

Applied tightly, rubber chains will help lengthen the life of the tires. These may be kept on at all times, no matter what the weather, for they are no bother either in driving or in the way of comfort.

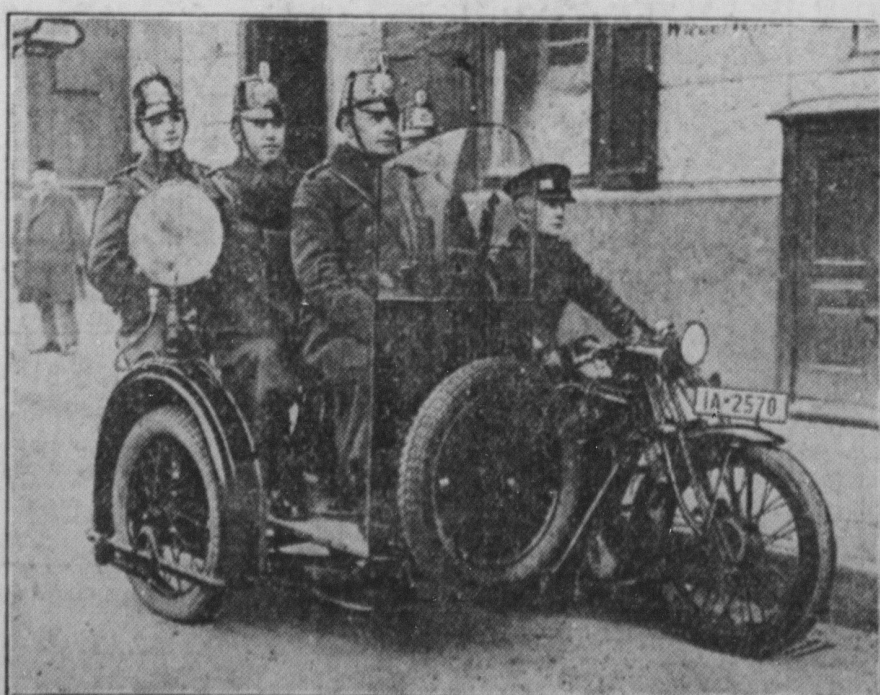
Carbon Deposits Caused by Poor Grade of Oil

Carbon deposits in the cylinders may be caused by excessive use of oil or an inferior grade of oil. The most common cause of too rich a fuel mixture due to running with the choke open for too long a time. The formation of the carbon deposit can be delayed by occasionally pouring a little kerosene into the cylinder while hot and allowing the engine to stand without running for some time. When it is started the softened carbon will be carried out by the exhaust. Whenever necessary the carbon should be removed by scraping. This is done by removing the cylinder head and using a scraper on the heads and the internal surface of the combustion chamber.

Paris Now Considering New Code for Traffic

A new set of traffic rules is to be framed to regulate traffic in Paris, France. The possibility of restricting the use of motor horns is being considered. Drivers habitually use their horns to excess; for instance, it is not uncommon for a whole row of drivers who are being held up by a policeman for what they consider an unreasonable time to blow their horns steadily in unison by way of protest. The question of inadequate lighting on vehicles is also being considered. One may still see in Paris a youth on a motorcycle carrying a Japanese lantern in his mouth, or a motor car lighted by a couple of paper lanterns, apparently with the consent of the police.

BERLIN POLICE TRY OUT MOTORCYCLE CAR



The photograph shows policemen of Berlin in a new kind of motorcycle sidecar, recently tested in the German capital for the use of the cops.

Look Carefully at Used Car's Replaced Parts

The difficulty in obtaining replacement parts for cars cannot always be blamed upon the manufacturer or the dealer. There are many things that can happen to make it difficult for the car owner to obtain the exact replacement part for his car and very often his failure to get exactly what he wants is the result of some previous work on the car of which he has no knowledge or about which perhaps he has forgotten.

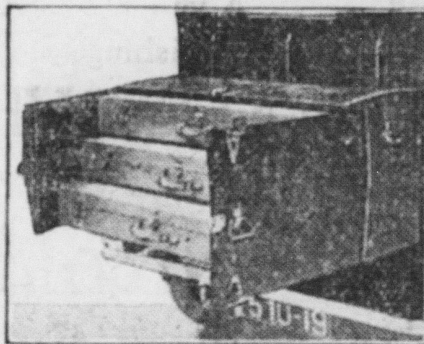
A case in point was where the owner of a second-hand automobile was in need of a new axle. The car was a 1925 model and it was natural that he should ask for a 1925 axle and accompanying parts. A 1925 axle, however, would not quite fill the bill and he was puzzled. Investigation revealed that the first owner of the car had had an accident with it and had replaced the broken part with a 1924 axle, not being able to obtain the parts for his particular year.

It frequently happens that in a pinch a motorist will buy parts which belong to some other make of car. All this creates difficulty for the second owner of the car when the need for a second replacement arises.

A suggestion to buyers of used cars is that they endeavor to find out from former owners whether any such repairs have been made and, if so, whether the exact parts of the particular model were installed.

New and Useful Design for Automobile Trunks

The photograph shows an innovation trunk consisting of three separate compartments. Each compartment...



Handy Automobile Trunk.

It can be used as suitcase. Such automobile trunks are being used by the tourists of Europe.

Sparks From Lindbergh's Engine Are Miles Long

Statisticians may well bow to H. Rabezanna, research engineer, who has gone to the trouble of telling us the amount of flashes delivered by the spark plugs in Colonel Lindbergh's plane during his great flights to Paris, to Mexico City and, throughout the United States.

Rabezanna says the plugs in the Spirit of St. Louis during these 34,905 miles delivered a total number of sparks equal to an unbroken dash of light 91 miles in length. A set of 18 spark plugs is required in airplane engines of the Spirit of St. Louis type, it was explained.

Rabezanna says automobile speedway runs are severe tests for engine parts, but they cannot compare with the terrific strain endured in trans-oceanic and other nonstop flights. Even the slightest defect in any one insulator, electrode or assembly would spell the difference between success and disaster, he added.

Auto Is Now Viewed as Big Traffic Menace

"Save Fifth avenue from the automobile." That is the cry along New York's two-billion-dollar fashion emporium as mechanics grow fearful that increasing automobile traffic may crowd them out of business.

The shopkeepers plead that unless a remedy is quickly found for the growing traffic congestion in mid-Manhattan, business is almost sure to move northward away from Fifth avenue. And their suggested remedy for the salvation of their street is the immediate construction of a vehicular tube under the East river. That would direct traffic through the center of the city without interfering with the comfort of Fifth avenue shoppers, the merchants claim.

EASY LESSONS IN AUCTION BRIDGE

By PAUL H. SEYMOUR Author of "Highlights on Auction Bridge" (Copyright, by Hoyle, Jr.) Article Twenty-Six.

Dealer's Play of a No Trump (Continued.)

THE following deal illustrates the bidding and creating entry cards:

Table showing card distributions for a No Trump hand. Includes suits (W, N, E, S) and specific cards held by each player.

South deals and bids one no trump and all pass. West leads the four of spades. Dummy is placed on the table and declarer looks over the two hands.

He has command of every suit and so feels free to finesse against either adversary. He wants to lead both diamonds and clubs from dummy, and if the first finesses succeed he may want to lead each suit twice from there, in which case he will need four entries in each hand. He sees that the heart suit can be played so as to put the lead in dummy three times and he must attempt to get a fourth entry card in the diamond suit. The deal is played as follows:

Table showing the play of the hand. Columns for West, North, East, and South, with cards played in each suit.

The fact that declarer hopes to make an entry card in diamonds is the reason for starting that suit first. At trick 6 in leading to draw out the Ace (the only remaining diamond held by the adversaries) declarer is careful to lead the seven and retain the deuce after which dummy's six becomes an entry card.

The clubs and diamonds each require two leads from dummy and so this diamond entry card was absolutely necessary to play the hand correctly. It was used at trick 10.

The Elimination Play

This is a play which may sometimes be used to render unnecessary the risk which attends every finesse. The proper setting for it is a major tenace in declarer's hand and the possibility of eliminating two suits from both of the declarer's hands, after which the lead is thrown to senior, who is compelled to lead up to declarer's major tenace, thus assuring declarer of two tricks in it.

While the play itself is comparatively simple, it is not easy for the average player to recognize a situation where it may be used. Therefore it may be classed with the grand coup and the squeeze play as common only with the experts.

An example would be when declarer is playing a no trump and senior has opened clubs with the Ace and King, and declarer takes the third trick with the Queen. Declarer now wins three rounds of hearts and three of diamonds and the remaining cards are as follows: Senior—spades, K, 10; clubs—10, 5. Dummy has: Spades—J, 9, 5; clubs—9. Junior's cards are small and make no difference. Declarer has: Spades—ace, queen, 7 and 3. The lead is in dummy. Declarer has seven tricks and needs two more for game. If a spade is led from dummy and the finesse taken and wins declarer will just get his game; but if the finesse loses or if he does not take it he can get only one more trick, making eight in all.

Declarer, therefore, leads the club and discards a small spade. Senior wins with his ten of clubs, takes the next trick with the five of clubs and then is compelled to lead either the King or the ten of spades. Thus declarer wins both the last two tricks, securing game.

"Office" Has Various Shades of Meaning

"The office" is a remarkable and generally misunderstood institution. It is doubtful if even those who spend much of their time there know as much about it as they pretend.

To the wife of one who goes to an office, it is a place where her husband sits in an easy chair all day long reading newspapers, chatting with a good-looking stenographer and counting his money or clipping interest coupons.

To his daughter, the office is a necessary evil without which her father would be unable to supply her with new gowns and sport roadsters.

To the boy it is merely a place where people work, and that is the reason he has little use for it.

But to the one who spends many of his waking hours in the office, it may mean many things. To one it is drudgery; to another it is a relief from domestic troubles; to another it is work that becomes play because he delights in it; to another it is a negative condition of things that are neither wholly good nor wholly bad, but quite necessary in order that he may eat regularly; to still another it is a place in which his ambition may sprout its wings. Not so many in the last named class.—Evansville (Ind.) Courier and Journal.

Genuine BAYER ASPIRIN

SAY "BAYER ASPIRIN" and INSIST!

Proved safe by millions and prescribed by physicians for

- Colds Headache Neuritis Lumbago Pain Neuralgia Toothache Rheumatism

DOES NOT AFFECT THE HEART

Safe Accept only "Bayer" package which contains proven directions.

Locomotive Burns Oil A locomotive has been designed in England which uses both steam and oil vapor for power. The engine combines internal combustion, but is used in raising steam. These are only two of several features. It is asserted that the fuel cost of the new engine will be half that of the ordinary type.

WOMEN GETTING BALD

The next five years will show women with Bald Heads, or going in that direction. Men attribute it to Heredity. What will the women say is the cause for it? Thousands of young men bald, or going that way, who had no need for getting bald or even scarce of hair. You surely can give one or two minutes each day to take care of your hair. This is all the time required. You owe this to Nature, as it was given to us in the beginning by Nature. Grow hair on your Bald Head. Grow new hair, destroy dandruff by improving the condition of the scalp which feeds the hair. Then you have the problem solved.

Forst's Original BARE-TO-HAIR is not a tonic, but is a scalp fertilizer and germicide. The results from its use has really created its own demand over the entire country. Literature and information sent upon request.

W. H. FORST Discoverer and Manufacturer Scottsdale, Penna.

Ancient City Uncovered

The city of Mohenjo-daro, which flourished in the Indus valley more than 5,000 years ago, has recently been revealed as the result of excavations in Sind, India. The houses unearthed date from about 3000 B. C.

"First Aid—Home Remedy Week" Coming

The National Association of Retail Druggists is urging greater advertising publicity for "First Aid—Home Remedy Week," fixed for March 18-24. This "sales baby," dedicated to the druggists of America by Sterling Products (Incorporated) is seven years old this month. It has scored six successive triumphs, and Secretary Samuel C. Henry, in urging the general adoption of the national slogan, "Fill That Medicine Chest Now," says: "Unpreparedness is seldom, if ever, due to willful neglect, but generally attributable to thoughtlessness or lack of foresight."

With the aid of "Little Johnny Advertising," the sponsors of this national merchandising campaign, which is really a drive against needless suffering, hope to induce householders to be better able to cope with sudden illness and unforeseen accident.

Well to Remember

"Fame is a bubble," quoted the Wise Guy. "Nevertheless it is just as well to let somebody else do your blowing for you," suggested the Simple Mug.

Disappointed

"I hope the candy I sent you for your party came on time." "No, it didn't. It came C. O. D."

Maligned

"I hear that the crowd booted you when you appeared on the stage." "False, my boy, false! There was no crowd."—Boston Post.

Advertisement for Doan's Pills. Includes text: "Has Your Back Given Out? Backache Often Warns of Sluggish Kidneys. EVERY day find you lame, stiff and achy? Suffer nagging backache, annoying headaches and dizzy spells? Are kidney secretions too frequent, scanty or burning? Sluggish kidneys allow poisons to remain in the blood and upset the whole system. Doan's Pills, a stimulant diuretic, increase the secretion of the kidneys and thus aid in the elimination of waste impurities. Are recommended everywhere. Ask your neighbor! Doan's Pills A Stimulant Diuretic to the Kidneys At all dealers, 60c a box. Foster-McClellan Co., Mfg. Chemists, Buffalo, N. Y."

Advertisement for Musterole. Includes text: "Guard Against 'Flu' With Musterole. Influenza, Gripe and Pneumonia usually start with a cold. The moment you get those warning aches rub on good old Musterole. Musterole relieves the congestion and stimulates circulation. It has all the good qualities of the old-fashioned mustard plaster without the blister. First you feel a warm tingle as the healing ointment penetrates the pores, then a soothing, cooling sensation and quick relief. Have Musterole handy for emergency use. It may prevent serious illness. To Mothers: Musterole is also made in milder form for babies and small children. Ask for Children's Musterole. Jars & Tubes. MUSTEROLE WILL NOT BLISTER Better than a mustard plaster."

Advertisement for Porter's Pain King Salve. Includes text: "PORTER'S PAIN KING SALVE. Keep it handy for burns, cuts, sores, wounds, bruises, chapped and cracked skin, boils, piles and felons. A good local application to relieve colds on the chest, croup, lumbago, varicella, measles and eczema. Made with lanoline (pure wool fat) combined with anti-septic, soothing, pain-relieving drugs. The Case, St. Louis, Mo., Since 1871. PORTER'S PAIN KING SALVE."

Advertisement for Rheumacide. Includes text: "Rheumacide GET IT AT THE JOINTS FROM THE INSIDE. Have your RHEUMATISM Lumbago or Gout? Take RHEUMACIDE to remove the cause and drive the poison from the system. 'RHEUMACIDE OF THE INSIDE PUTS SUBSTITUTES ON THE OUTSIDE' At All Druggists Jas. Bailey & Son, Wholesale Distributors Baltimore, Md."

Advertisement for Spitz Good Sheep Tender. Includes text: "Spitz Good Sheep Tender The Pomeranian sheep dog, better known as the Spitz dog, is bred in most countries as a house pet, small and useless. But in its own home on the shores of the Baltic this dog is the local sheep tender. He has a fox-like face and very long hair. In color he ranges over a wide scale, but black or white is most common, and the average weight is about eight pounds. The Spitz stands cold weather much better than warm."