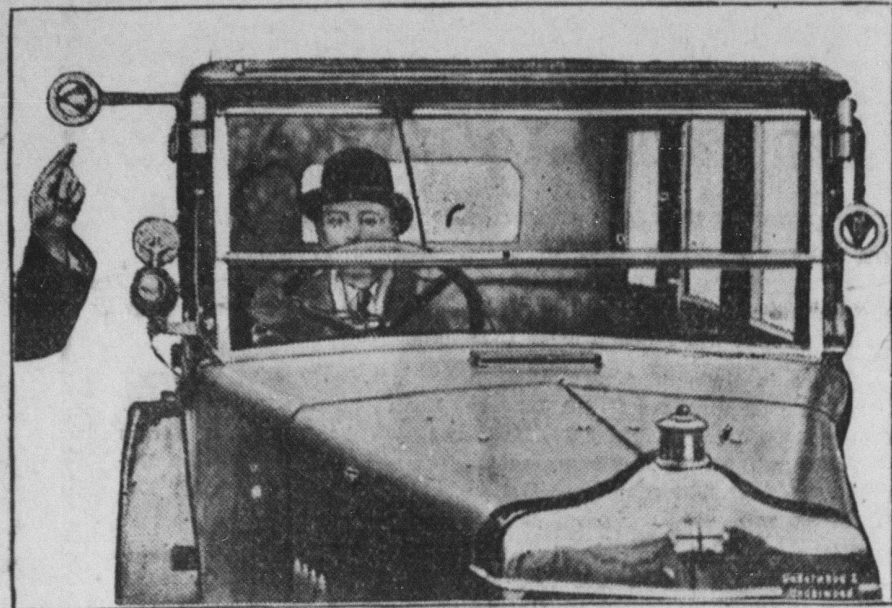


TEST NEW TRAFFIC SIGNALLING DEVICE



A new traffic signalling device has recently made its appearance on the streets of London. It consists of an illuminated circle of light on a signal arm, which is operated by a press button from the steering wheel. The illumination is as strong in the day time as it is at night, and never fails to attract the attention of a following driver to the fact that the car is turning to either the right or left. There is a signal on each side of the car.

MILLIONS LOST BY CARELESSNESS

Motor Car Owners Urged to Check Up on Measurements of Fuel.

Motor-car owners themselves are much to blame for the continuation of an evil through which millions upon millions of dollars annually are lost from their own pockets.

This was pointed out in a statement issued from national headquarters of the American Automobile association, in which it was asserted that the indifferent attitude of the average motorist is the chief cause for the tremendous yearly losses through short measurements in gasoline and oil.

The American Automobile association statement is predicated on the experience of many of its large affiliated clubs throughout the country, which have from time to time and with the co-operation of officials, staged investigations of and raids on certain gasoline stations suspected of systematic "short-measure" practices.

Attendants Criticized.

The experiences of the clubs, according to the American Automobile association, have definitely established that the filling station pump is not responsible for short measurement in nearly so many instances as the station attendant who recognizes in the inattention of the patron an excellent opportunity to substitute a lesser quantity of gasoline and oil than is ordered. It has also established that the oil companies and the owners of filling stations are in the great majority of instances doing everything possible to prevent sharp practice on the part of irresponsible attendants.

Co-Operation Extended.

Oil companies and owners of individual stations have given unstinted co-operation to the authorities and to the motor clubs attempting to remedy the short measurement situation, but the motorist must give his assistance in a similar manner if the evil is to be quickly and effectively wiped out. "In a recent raid staged by city officials with the co-operation of the Cleveland Automobile club, 16 stations serving from 500 to 1,000 customers daily were found to have attendants who were manipulating the pumps in such a way that short measurement of gasoline was resorted to in order to provide them with easy money, the statement points out. In one case, the raiding party found an attendant who, on three different occasions, pumped less than four gallons of gasoline into the automobile tank on each five-gallon order.

Important Principles in Automobile Safety

Education, engineering and enforcement are the three important principles in automobile safety, Arthur Hardgrave, past president of the Kansas City Safety council, told the public safety session of the sixteenth annual convention of the National Safety council, at Chicago recently.

This is proved, the speaker said, by the fact that, while 50 per cent of accidental deaths in Kansas City this year have been caused by automobiles, not a member of the safety council of that city has been involved in a fatality.

Education is the first step in public safety, Hardgrave asserted. This education must include teaching the necessity of caring for the car so that it will not skid on wet pavements as well as watching out for pedestrians and not speeding. Motorists were advised to equip their cars for safety. All controls, chains and bumpers must be in working order.

Snow-Proof Road

The first snow-proof highway to be constructed in Wisconsin has recently been completed. The highway is built a foot higher than the ground immediately surrounding. That this method of grading will cause the road to be swept clean by the wind except during the most severe storms, is the belief of engineers. The ditches on either side of the road are constructed in such a way that they may be used for sleighing.

Contributory Negligence Is Often Misunderstood

"Contributory negligence is one of the oldest doctrines of the common law, and is one of the most frequently resorted to by lawyers and judges to wreck what otherwise might be a perfect case," says a bulletin issued by the legal department of the Chicago Motor club.

"Contributory negligence is the most frequent defense interposed in automobile litigation, yet its application is frequently misunderstood by motorists. The meaning of the term is that any act of omission or commission on the part of a driver or owner of an automobile that contributes to an accident bars that driver or owner from redress in court. In other words the driver must come into court free from any neglect when he seeks compensation for damages done or injuries sustained. The complications that arise from the rule of comparative negligence which at one time existed in most states but which is no longer a rule in Illinois and many other states, so confused the courts that it has been abandoned for the more workable rule of contributory negligence. The fact that the person sued was guilty of negligence and even though his degree of negligence was several times more flagrant than that of the person suing, does not help the case, if the driver suing has been negligent."

Anti-Glare Cap Is Good Protector for Motorist

Instead of having a separate pair of goggles to wear as a glare protector at night, the motorist will welcome the idea shown in the illustration, where the goggles are incorporated in the cap and, therefore, always at hand. Cut out a piece of the cap just above the visor and replace this with a piece of green celluloid.



Piece of Green Celluloid in Cap Makes Good Anti-Glare Shield for the Motorist.

Of course, the cap must be large enough to permit this. The band of the cap is cut and a button and buttonhole are provided, as indicated. When the goggles are needed, simply loosen the button and pull the cap over the eyes so that you can see through the celluloid.—William C. Thomas, Chicago, Ill., in Popular Mechanics Magazine.

AUTOMOBILE HINTS

Automobile tires, it is found, give us 27 times the value we used to get a few years ago.

Present figures compiled by the National Automobile Chamber of Commerce give the total number of motor trucks in use in this country as 2,764,000.

A new land is open to tourists with the charting of 800 miles of road in Lower California. This is historically famous country that assures new thrills to travelers.

These stock motor cars advertised to do from sixty to one hundred miles an hour could make a ten-strike with the public by furnishing first-aid kits as part of the accessories that go with the car.

Now we may have our wheels and tires painted to harmonize with the car's colors. A small tire manufacturer has already started the mode of painting the tire sidewalls for use on flashy autos.

Where Swatters Are Taboo

In Ukraine, the southern Russia province, superstitious natives hold the common house fly in reverence and make no effort to kill the pest. Many persons regard the fly as a sacred animal.

Jaywalk Into Cars

Five per cent of the automobile accidents of the country are caused by persons who walk into the sides of moving machines. Like automobiles running into the sides of trains.

NEW WHIPPET CAR A MOTOR MARVEL

One of the sensations in the automobile world is the perfected "Whippet" produced by the Willys-Overland, Inc., and it is direct evidence that John N. Willys, president of the corporation, proposes to make good on his declaration that "there can be no monopoly in the light car field." The perfected car, and the price at which it is offered, placing it directly in competition with the lowest priced cars, has centered the eyes of the automobile industry and the motor car world in general on the enterprising Toledo manufacturer. It makes him the first manufacturer of automobiles to enter the price field heretofore exclusive to but one light car manufacturer.

The "Whippet," which has been in production for more than 18 months, holds the national fuel economy record of 43.28 miles to the gallon in a test between Los Angeles and New York City, covering a distance of 3,550 miles, under official observation of the A. A. A. In a speed test on Rockingham Speedway, Salem, N. H., a "Whippet" recently attained a speed of 71.6 miles an hour over a 50-mile route. This was officially timed.

The same engine that has accomplished these records is the power plant employed in the perfected "Whippet," now offered at the lowest price in the history of Willys-Overland. The "Whippet" was the first light car to be equipped with four wheel brakes, setting a new trend in the light car field. The braking area of the "Whippet's" brakes is greater than any other light car.

Details of the perfected "Whippet" disclose a wider range of colors, employment of full crown fenders, a new cadet sun visor that imparts a smart military effect, and the addition of automatic windshield cleaner, rear view mirror, and a combination rear driving light and stop light. These additions make the "Whippet" the most fully equipped light car built in the four cylinder field.

Life's Added Problems

Life is becoming more mathematical every day. We are now urged to count our blessings before eating, our calories while eating, our change after eating and our sheep while going to sleep.—Kansas City Star.

Opportunity

Next thing for scientific breeders to do is to cross the carrier-pigeon with the parrot so that messages can be delivered verbally.—Wall Street Journal.

Various Trades Offer Occupation to Blind

Blind men are employed in many engineering factories. In one German electrical concern, says the annual report of the National Institute for the Blind, more than one hundred sightless people are employed, while double that number are being trained. Blindness, it is said, is no hindrance to a man looking after two or even three automatic machines. The average earning capacity of a blind operative in these works is considered to be about 80 per cent of that of a normal-sighted man.

Ninety blind persons employed in French engineering trades earn about 85 per cent of full wages. A motor factory in America employs 44 blind men, who are given the work for which they seem most competent.

Nature's Economy

Inventions during the next two or three centuries will, in the opinion of many experts, probably be in the direction of imitations of the wonderful economy and the simple, direct methods of nature. Take the electric eel as an example. Its electric organ is in no sense a storage battery, but a contrivance by which electric energy is liberated at the moment when it is required. At rest, the organ shows so small an electromotive force that a good galvanometer is required to detect it, but a sudden nervous impulse from the eel's spinal cord raises a potential of many volts, with very little heat, and so small an expenditure of matter as to defy the most expert chemist to weigh it. Fireflies, glow-worms and many deep sea fishes produce light without heat, at a cost which would make the price of a wax candle an extravagant outlay.

Feet and Talking

It's the fellow who can't talk on his feet who puts his foot in his mouth when he tries.—San Francisco Chronicle.

Grandfathers on Vacation

Fifteen grandfathers, whose ages totaled 1,200 years, recently enjoyed their annual two-weeks' vacation together at Littlehampton, England. They are members of the Browning Hall Grandfathers' club of London. The oldest in the party was eighty-four and the youngest seventy.

Correct the Fault

Whatever you dislike in another person take care to correct in yourself.

Migratory Bird Treaty

A resident of Ohio, who had previously raised wild fowl under a federal permit, but failed to submit the required report of operations and continued to make sales and shipments without renewal of the permit, was arraigned in Federal court at Toledo, Ohio, found guilty, and fined \$300 and costs.

To engage in the business of rearing and selling migratory waterfowl, says the bureau of biological survey, United States Department of Agriculture, it is first necessary to obtain a permit from the secretary of agriculture and then to comply with all requirements of state law.

These requirements are made under the migratory bird treaty act regulations to protect and perpetuate migratory species of birds passing each year between the United States and Canada.

Lets the World Go By

For the seventy-fourth consecutive season, Mrs. Richard T. Auchmuty of New York has arrived at her summer home, the Dormers, on the Lenox-Pittsfield road. She has never owned an automobile, has no listed telephone, no electric lights, no steam heat in her villa, nor a radio. She prefers to drive over the wooded roads in an open victoria. Glowing fagots in her fireplace and kerosene lamps furnish heat and light. She is in her ninetieth year.—Boston Globe.

Not That Sick

Girl—I want a nice book for an invalid.  
Librarian—Something religious?  
Girl—No, not now. He's convalescent.

Cure for Optimism

The neurologist says optimists live longer than pessimists. They might if they didn't have such sublime faith in loose brakes.—San Francisco Chronicle.

Hen Lays Twin Eggs

A hen in Ulster lays two eggs at a time, sometimes three. The owner explains this by saying that the hen, a last year's pullet, had sunstroke when a month old. Since it has grown up the hen has on four days a week laid two eggs at a time, and has twice laid three.

Apotheosis of the Pancake

Sign in restaurant window—"Waffles of Class and Distinction."—Boston Transcript.

Canadian Lakes Beautiful

Among the seven reservations set aside by the government of Canada in the Rocky mountains there is none more beautiful than Waterton Lakes National park, which lies on the eastern slope of the Rockies where these mountains approach the international boundary. The park forms a rough square with a long L-shaped section added to the east, the whole having an area of about 220 square miles.

Newest American Sport

Critic-baiting has become an even rarer and more typical American sport than framing prize fights or fixing horse races and championship baseball games. The man who practices professional criticism in this year of our Lord lives constantly in a metaphorical gashouse, district, his head and seat in imminent prospect of bash and boot.—George Jenn Nathan in Vanity Fair.

Profit by Past Errors

The past is gone, and gone forever. You may learn by your mistakes, but do not be guilty of the sin of constantly worrying over them. Turn your face toward the future. Give your mistakes and blunders a decent burial in the past, and let the memory of them furnish you with implements of industry by which you may operate the gold mine of future possibilities.—Exchange.

Fowls in Biblical Times

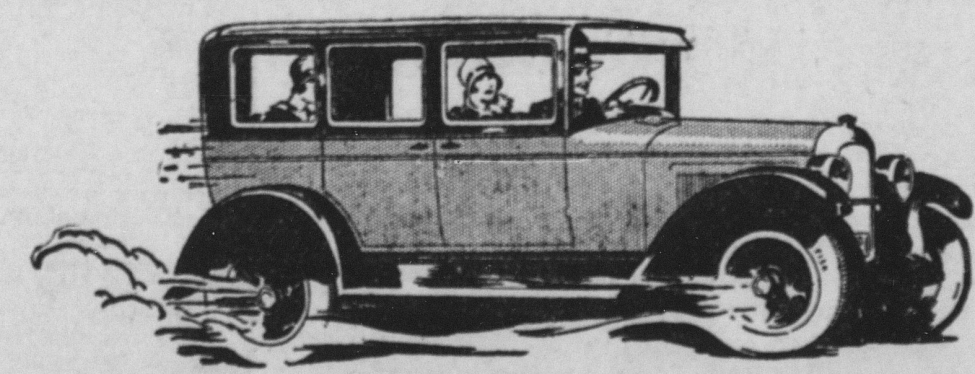
Partridges are noted in the Old Testament. The fatted fowl (1 Kings, 4:23) is interpreted as either goose or duck. Cocks and hens were brought from Persia two or three centuries before Christ. A tomb at Marissa of about 200 B. C. has a good representation of a crowing cock. Sparrows and other "twittering birds" were also used for food.

It doesn't pay to advertise unless you are able to deliver the goods.

Beauty and Quality in the Perfected Whippet

COACH \$535 F.O.B. Factory

"A QUALITY CAR AT THE LOWEST PRICE IN OUR HISTORY"



4-DOOR SEDAN \$585  
FORMER PRICE \$725  
REDUCTION \$140

THE MOST VALUABLE CAR EVER OFFERED FOR SO LITTLE MONEY

- Touring - \$455 '170
- Coach - - 535 90
- Roadster (2-pass.) 485
- Roadster with rumble seat 525 170
- Coupe - - 535 90
- Cabriolet Coupe 545 200
- Chassis - 355 90

All prices f. o. b. factory

Quality Shown in Outward Beauty—Whippet introduced the vogue in light car design for smart, compact bodies with low, fleet lines.

John N. Willys  
President, The Willys-Overland Company

Big 4-wheel Brakes—more braking surface per pound of car weight than any other light car. You can stop from 40 miles an hour within 51 feet.  
Rear Gasoline Tank—for utmost safety—with vacuum fuel feed. This costs more to build, but is much safer.  
Increased Speed—Whippet superiority is also expressed in greater—and safer—speed; 55 to 60 miles per hour, and many owners say 65.  
Greater Gasoline Economy—Whippet holds the A. A. A. Coast-to-Coast economy record of 43.28 miles per gallon.  
Other Important Features—164 inches of springs, full force feed lubrication, faster acceleration, silent timing chain, longer leg room, adjustable steering wheel, lower center of gravity, single plate clutch, longer connecting rods, banjo-type rear axle housing with removable shaft, are among the many quality car features of the Whippet.

THE WHIPPET NOW READY FOR IMMEDIATE DELIVERY  
WILLYS-OVERLAND, INC.  
TOLEDO, OHIO