

THE CENTRE REPORTER

THURSDAY, APRIL 21, 1927.

REBERSBURG.

The infant daughter of William Walker is critically ill at this writing. Geraldine Brungart has been very ill during the past week and is not improving rapidly.

Ray Stover and family spent Sunday at William Stover's.

Preston Ziegler and Raymond Ziegler and family spent their Easter vacation at William Ziegler's.

Mr. and Mrs. Charles Miller and son, Howard, and Harry Baker, from Pittsburgh, spent several days at the home of Jerry Brungart.

Mrs. Jerry Brungart became quite ill on Sunday.

Kern and Wilbur Meyer spent the Sunday with their father, H. A. Meyer.

Harry Hubler and family, from Pittsburgh, have been visiting relatives and friends for several days.

Mr. and Mrs. Walter Weaver, from Lemont, were at the home of his parents, Mr. and Mrs. Calvin Weaver, Jr., on Sunday.

Gladya Baker has been confined to her bed for several days with a severe cold.

Dawn Bierly has a bad case of pneumonia.

Phyllis Turbert and her friend, Ray Vonada, from Pittsburgh, were visiting in this district for several days.

John Rupp and family went to his home at Antis Fort. They had been doing the work at Jerome Meyer's for several months.

Wallace Kreider is very ill at the present time.

Mrs. Ralph and Dorothy and Mrs. Page spent several days at Delaware Water Gap with Orion Reish's.

Mr. and Mrs. Lester Meek and son Donald, of Bellefonte, spent Sunday at Charles Smull's.

Lodie Bierly fell down the stairs and sprained her leg severely.

EXECUTOR'S NOTICE.

In the Estate of ELIZABETH SHIRK, late of Centre Hall Borough, Centre County, Pa., deceased.

Letters testamentary on above estate having been duly granted the undersigned, all persons knowing themselves indebted to the estate are requested to make immediate payment, and those having claims against the same to present them duly authenticated for settlement.

W. FRANK BRADFORD, Exec., Centre Hall, Pa.

Penna. Dairymen to Meet.

The Pennsylvania Dairymen's Association will hold a meeting at State College, in the old chapel, on Friday evening, May 6, beginning promptly at 7 o'clock.

On the day following, Saturday, May 7th, occurs the Penn State Dairy Exposition, an annual event staged by the dairy students of the college. This will include a cattle show, judging contests, fitting and showing contests, and other interesting events. In addition to the opportunity of seeing the show there will be an opportunity of joining a tour of some of the college departments and go over some of the field experimental plots. There will also be college athletic events in the latter part of the afternoon, including a base ball game between Penn State and Syracuse University. The dairy students annual banquet will be held Saturday evening and visiting dairymen are invited to stay over for this event. In case room reservations are desired, notify R. H. Olmstead, 53 Dairy Building, State College, Pa.

MACHINE SHOP

WHERE IS DONE ON SHORT NOTICE

ACETYLENE WELDING
WOOD WORK, WAGON WORK

W. A. HENNEY

CENTRE HALL, PA.

Bell Phone 1323 12ft

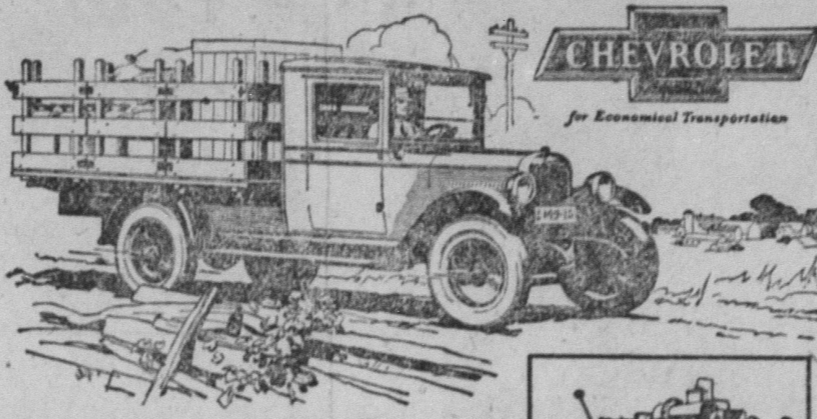
Insurance and Real Estate

Want to Buy or Sell?

SEE US FIRST

Chas. D. Bartholomew

CENTRE HALL, PA.



Quality Features of the world's most popular gear-shift truck

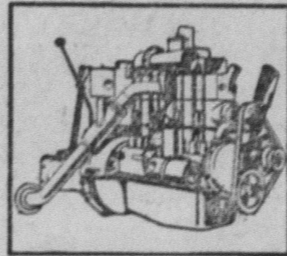
Chevrolet is the world's most popular gear-shift truck because it offers scores of quality features not found on any other haulage unit in the low price field.

Included in this list are numerous recent mechanical improvements of the utmost importance, such as—AC oil filter and AC air cleaner to protect the motor from excessive wear and to maintain at its peak efficiency the smooth, effortless power for which Chevrolet's motor has long been famous. Other new features are an improved transmission and new gear-shift lever; a new and more conveniently located emergency brake; crowned fenders; a new radiator of greater cooling capacity; a new 17-inch steering wheel—and even bullet-type headlamps to give a distinctive touch of smartness!

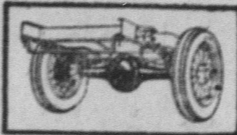
If you want efficient, truly economical transportation, come to our salesroom and see the improved Chevrolet Truck!

1-Ton Truck with Stake Body \$680 1-Ton Truck with Panel Body \$755
1-Ton Truck Chassis \$495 1/2-Ton Truck Chassis \$395
1-Ton Truck Chassis with Cab \$610 Prices f.o.b. Flint, Mich.

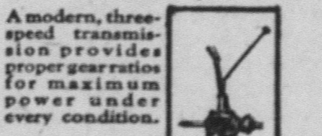
In addition to these low prices, Chevrolet's delivered prices include the lowest handling and financing charges available.



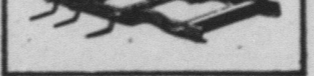
The famous Chevrolet valve-in-head motor has been made even more dependable—with even greater operating economy.



The rugged Chevrolet rear axle possesses abundant strength and stamina for the heaviest haulage duty.



A modern, three-speed transmission provides proper gear ratios for maximum power under every condition.



A husky, channel steel frame is a contributing factor to the long life and faultless performance of Chevrolet Trucks.

Decker Chevrolet Co. - Bellefonte
Homan's Motor Co. - Centre Hall
QUALITY AT LOW COST

LEGAL ADVERTISEMENTS

AUDITORS' NOTICE.—Notice is hereby given that the undersigned, an auditor appointed by the Orphans Court of Centre County, to make distribution of the funds in the hands of Tamer B. Kern and J. Gross Shook, Administrators of, etc., of William W.

Kern, late of Gregg Township, deceased, will hold a meeting in the office of J. M. Keichline, No. 6 Temple Court, Bellefonte, Pa., on Monday, April 25th, 1927, at ten o'clock A. M., at which time and place all persons in interest may appear and be heard.
J. M. KEICHLINE, Auditor.

Special Star Car Month

Each and Every New Car Purchased This Month Will Be Equipped With—

- 1 Set Front Bumpers
- 1 Set Rear Bumpers
- 1 New Spare Tire
- 1 New Inner Tube
- 1 Tire Cover

You receive the Salesman's Commission. This is just another way of sharing our profits.

No change has been made in the delivered price of the cars. Each car oiled, greased, and ready to go. You get Service here, too, after you buy the Car.

FETTEROLF'S GARAGE

B-41 Phone 3422

CENTRE HALL

STAR AND DURANT AUTOMOBILES

25,000 Shares The West Penn Electric Company

(Subsidiary of American Water Works and Electric Company, Incorporated)

6% Cumulative Preferred Stock

Par Value \$100 Per Share

Stock Full Paid and Non-Assessable

Preferred as to assets and dividends over Class A, Class B and Common Stocks

Releasable in whole or in part on any dividend date, upon 30 days' notice, at \$110 per share and accrued dividends. Cumulative dividends payable quarterly on the 15th days of February, May, August and November.

DIVIDENDS NOT SUBJECT TO NORMAL FEDERAL INCOME TAX UNDER PRESENT LAW

CAPITALIZATION

(Upon completion of present financing)

Class of Stock	Authorized	Outstanding
Preferred (\$100 par)	\$50,000,000	\$24,624,700*
Class A (no par)	59,258 shares	59,258 shares
Class B (no par)	165,742 shares	165,742 shares
Common (no par)	1,000,000 shares	277,774 shares

*All of the outstanding Preferred Stock has been classified as follows:
6% Cumulative (this issue) \$ 2,500,000
7% Cumulative 22,124,700

The Company has no funded debt outstanding

PROPERTIES, BUSINESS AND TERRITORY

The West Penn Electric Company, a Maryland corporation, organized in December, 1925, controls a number of important utility companies, principal among which are:

- West Penn Railways Company
- West Penn Power Company
- Monongahela West Penn
- Public Service Company
- Keystone Power Corporation
- The Potomac Edison Company

supplying electric light and power, railway and gas service over an area of approximately 22,000 square miles extending from within 25 miles of the City of Baltimore, Maryland, across Maryland and northern West Virginia to the Ohio River, and

northward in the important industrial sections of Western Pennsylvania, with the exception of the City of Pittsburgh and its immediate environs, to north central Pennsylvania. The total population served by the Company is approximately 1,700,000.

The subsidiaries of The West Penn Electric Company own and operate 27 electric generating stations, including the modern hydro electric station on the Cheat River, with an aggregate installed capacity of approximately 482,000 Kw.; 2,258 miles of high tension transmission lines (including 175 miles of 132,000 volt steel tower lines); 637.8 miles of track for street and interurban railway service; and serve approximately 207,800 electric consumers in over 945 communities.

EARNINGS

Consolidated earnings of the Company and its subsidiary companies for the twelve months ended December 31, 1926 were as follows:

Gross Earnings, including Miscellaneous Income	\$34,437,010.28
Operating Expenses, Maintenance, Rentals and Taxes	18,548,261.55
	15,888,748.73
Interest and Amortization of Discount	\$6,272,948.74
Preferred Dividends of Subsidiaries	2,215,353.44
Minority Interests	293.27
Balance	7,400,153.28
Reserved for Renewals, Replacements and Depletion	2,794,965.53
	\$ 4,605,187.75

Annual Dividend Requirements on Preferred Stock:
\$22,124,700 of 7% \$1,548,729.00
2,500,000 of 6% (this issue) 150,000.00 \$ 1,698,729.00

Preferred Dividend Requirements Earned Over 2.7 Times

Stock paid for in full during April will carry accrued dividends from February 15, 1927

CIRCULAR AND MAP ON REQUEST

PRICE \$100.00 PER SHARE
CASH OR DEFERRED PAYMENTS

(All Subscriptions are accepted subject to prior sale)

West Penn Securities Department, Inc.

West Penn Building

14 Wood Street

Pittsburgh, Pa.

Whatever Your Ambition May Be

- for POWER
- for WEALTH
- for Contentment,

Build Up a Bank Reserve

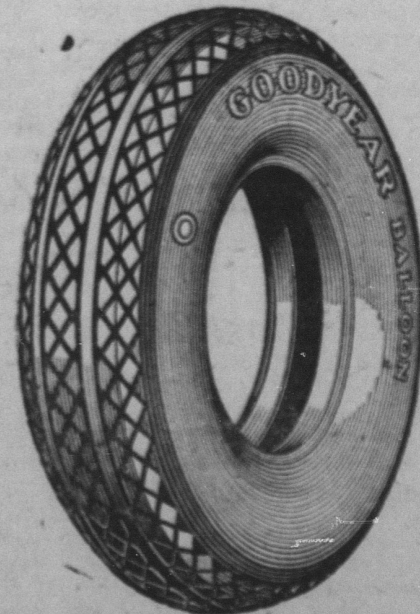
When a call comes for cash you have a reserve to draw on. Use our Bank—to Build Up—to Have a Reserve to Call Upon.

THE FIRST NATIONAL BANK

CENTRE HALL, PA.

5 PER CENT INTEREST ON TIME AND SAVINGS DEPOSITS

WHY Buy a 1926 Tire In 1927?



WHY BUY AN OUT-OF-DATE TIRE? THERE'S A NEW TIRE—THE 1927 GOODYEAR BALLOON WITH THE NEW-TYPE ALL-WEATHER TREAD SPECIALLY DESIGNED FOR BALLOON TIRE PERFORMANCE.

Its tread insures slow, even wear,—no more cupping "pot-holing" and such troubles. It gives positive, gripping traction. It is a real NON-SKID Tread.

COME IN AND SEE IT.

R. S. HAGAN'S GARAGE

Phone 56

CENTRE HALL

MORE PEOPLE RIDE ON GOODYEAR TIRES THAN ON ANY OTHER KIND.