

LOCAL AND PERSONAL.

Mrs. W. F. Colyer, for the greater part of last week, was a guest of friends and relatives in Altoona.

Miss Emma McCoy, who had been seriously ill, is improving, as is also Mrs. James B. Strohm. Mrs. Jacob Sharer is also improving.

The old age pension measure was defeated finally on Tuesday. Governor Fisher was a large factor in bringing about its defeat.

Dr. Harry L. Kline, of Youngstown, Ohio, on his way to Bethlehem by auto, stopped in Centre Hall for a few minutes on Saturday forenoon.

The two plays given on Friday and Saturday nights by seniors in the High school were well patronized, the proceeds netting \$85.00. The plays were well executed, and were pleasing throughout.

The Supreme Court decided the merger of the United Evangelical church and the Evangelical Association is legal. The decision will no doubt again unite the two branches of the church separated for many years.

Mrs. Eliza Stump, whose illness was noted some weeks ago, is not improving to any great extent, and for the greater part of the time is confined to her bed. Her affliction has affected her speech to such an extent that she is unable to converse with members of the family.

Out-of-town relatives and friends who attended the funeral of Miss Jennie E. Stahl, on Monday, were these: C. Asher Stahl and family, Altoona; Bruce F. Stahl and wife, Altoona; R. E. Snyder and family, Altoona; C. K. Stahl, Philadelphia; Mrs. W. C. Dunlap, Reading; Mrs. R. T. Bayard, Tyrone; Marcellus Sankey and family, Middleburg; Miss Edith Sankey, Pine Grove Mills; Mr. and Mrs. G. H. Thomas, Sunbury; Mrs. Sallie Kamp, Lock Haven; Prof. H. A. Fleck and family, Mrs. Maggie Williams, Tyrone; John Rockey and Edna Rockey, State College; Calvin Gfrerer and daughter, Axemann.

Beginning at Old Fort, for several miles eastward, trees are being planted on the north side of the State Highway by the Highway Department. The variety used is oriental pine, sycamore, larch and pine. For the sycamore, excavations will be so large that the passerby would not have guessed it was for a tree from a nursery. For the other trees the excavations are two feet square and two deep. The planting is done carefully, not unlike the instructions given by nurserymen, except that they are set very much deeper, and instead of banking ground around the stem it is drawn away from it, leaving a depression there. This, it is said, is done to collect water. The trees are set at irregular distances from each other, to make it appear they had sprung up under natural conditions.

NASH

Leads the World in Motor Car Value



Special Six
Special Sedan
\$1485
f. o. b. factory

A More Distinctive Style in Motor Cars—Achieved by Nash

For those who hope to find their cars at the very peak of style and luxury, Nash has created this charming Special Sedan on the Special Six Chassis.

Its graceful profile suggests the custom-car design of Parisian boulevards. Here is the low-swung French-profile effect so desirable today.

Every interior detail is luxurious. The upholstery is tailored in exquisite Mohair Velvet. Window mouldings, door panels and instrument board are in walnut finish. And there is a walnut steering wheel.

And the way this car performs every bit as enjoyable as its sparkling style.

It has the Nash 7-bearing motor—as do all Nash models—for superlative smoothness at every speed.

It has the Nash tubular-trussed frame, for extra strength and steadiness, to guard the body from destructive strains.

And it has power! Nash models, all of them, have extra power for exhilarating acceleration, on the hills, and in the traffic.

Compare this car to others sold at the same price—\$1485 f. o. b. factory—and you cannot fail to decide you would rather have the Nash.

Hosterman's Garage Centre Hall, Pa.

MARRIAGE LICENSES.

James F. Maloney.....Warriors Mark
Mary H. Beck.....Warriors Mark
Simon P. Springer.....Millheim
Ruth Olive Wilkinson.....Spring Hill
Charles O. Heath.....State College
Mary G. Barry.....State College
C. Artis Wron.....Belleville
Catharine E. Rockey.....Belleville

FARM CALENDAR.

Timely Reminders from The Pennsylvania State College.

Vegetables Need Room—Do not sow seeds too thickly and then neglect to thin the plants. It is very easy to sow too much fine seed, such as carrot, lettuce and radish. If the seed is sown thickly to insure a perfect stand of plants, be sure to do the thinning while the plants are young.

Feed Ewes Grain—Do not take away from the ewes grain too early in the spring. Remember that the young grass carries a high water content and very little nourishment.

Prune for Strength—In pruning the young apple, there are three objectives which constantly must be kept in mind since they form the goal toward which all pruning operations are to be directed. Those three objectives are strength, size and fruitfulness. Say specialists at the Pennsylvania State College.

Grow a Timber Crop—April 24 to 29 is American Forest Week. Remember that wood and timber gain in volume even though a farm may be abandoned. While other income may fall very low or cease altogether, the timber crop continues to gain. This feature is important in maintaining the value of the farm in the face of the town industries which tend to lead the farmer away from agriculture and cause him to neglect his farm business.

THE RICHELIEU THEATRE

FRIDAY
(This Week)
"THE BIG PARADE"
Exactly as presented in the large cities with Big Symphony Orchestra and car load of effects.
MATINEE SHOW AT 2:15. NIGHT SHOW AT 8:15.
Reserved seats now on sale at theatre MATINEE, 50c to \$1.10. NIGHT, 75c to \$1.65.

Are You Handsome?

OR ARE YOU BEAUTIFUL? In EITHER CASE, MASCULINE OR FEMININE.

WE WANT TO SEE YOU

OUR NEW SPRING AND EASTER GARMENTS ARE MARVELLOUSLY BEAUTIFUL, PRICED IN THE ULTRA-CONSERVATIVE NIEMAN MANNER. TO SEE OUR SPRING LINES IS TO DESIRE THEM, AND ALL WE ASK IS THE FAVOR OF YOUR INSPECTION

RUGS and LINOLEUMS

We are just as much below our competitors in prices on Rugs and GOLD-SEAL Linoleums as we are in our Clothing and Shoes.

SHOES and Furnishings

For every member of the family—REAL HONEST-TO-GOODNESS STYLES and HONEST TO-GOODNESS VALUES.

If you have never been here, you owe it to yourself and to your bank account to see us—and if you have, we are only too glad to see again our friends and customers.

NIEMAN'S DEPARTMENT STORE

"WHERE THE DOLLAR GOES THE FARTHEST!"
MILLHEIM

400th SUBURBAN DAY

NEXT WEDNESDAY
IN ALTOONA

People of Centre Hall have been eagerly awaiting this celebration announcement. Wednesday has always been set aside by our local people as visiting day in Altoona because they know they will meet friends from nearby towns and from farther distant points.

Altoona's 400th Suburban Day will attract the most economical buyers because of the extensive preparations made by Booster members to make each yearly event of special importance to the thrifty.

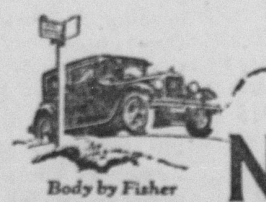
It is just after Easter when thousands of things, clean, new and seasonable must be sacrificed to clear stocks and turn into money to buy goods for summer, which is many days ahead.

Don't miss this 400th Anniversary Celebration Day--NEXT WEDNESDAY, 20th in Altoona.

Good Roads to Stores in Restaurants in Theatres in Altoona

NEXT WEDNESDAY -- APRIL 20

ALTOONA BOOSTER ASSOCIATION



NO DOUBT ABOUT IT

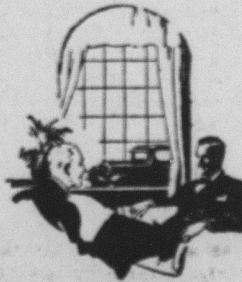
There is true satisfaction in a car that you can buy with confidence... and own with pride.

And proved on the Proving Ground... proved in the trials of months and miles... proved by the unerring evidence of ever increasing popularity and owner praise—Oldsmobile assures you brilliant performance, thrift and long life, comfort and beauty... lasting satisfaction.

But get behind the wheel; your own experience is the final proof.

See it yourself—drive it yourself—know it yourself... and then you will say—

"Here is a truly great car... no doubt about it!"



TWO-DOOR SEDAN
\$950
P.A.S. LANSING

HOMAN'S GARAGE
CENTRE HALL, PA.

OLDSMOBILE