

THE CENTRE REPORTER
THURSDAY, FEBRUARY 25, 1926

COURT CREDITS SCHOOL
BOARD WITH PROPER MOTIVE

Bradford County Judge Decides Parent Must Transport His Children Because School Board Enlarged Play Ground.

In handing down a ruling in the case of Denton Tillotson against the board of school directors of LeRoy township, Bradford county, Judge Charles M. Culver has decided an issue which it is believed has never before come before any of the courts of the State. He ruled in favor of the school board.

Tillotson's home was just 95 feet outside the mile and a half limit from the school which makes it compulsory for the district to transport pupils. On August 7, 1925, the school board bought a half acre and added it to the school ground, thereby bringing Tillotson just a few feet within the mile and a half limit and making him transport his three children himself. He alleged the board bought the ground for the ulterior motive of evading the transportation law and not to enlarge the playground as the members had claimed. He furthermore claimed that the distance from his home to the school in reality had not been changed in the least.

Judge Culver declares in his opinion, however, that the school code as amended in 1925 provides that the distance shall be measured from the home to the "nearest point on the school ground" and not to the school building itself. The court declares he can find nothing to disprove the board's statement that the increase in the size of the playground was necessary in order to keep the children from playing in the public highway.

MARRIAGE LICENSES.

Carl A. Hohman.....Huntingdon
Mary M. Rimmey.....State College
Harry Mitchell Thompson.....Howard
Josephine K. Bowes.....Blanchard
Wm. H. Huntzinger.....Pittsburgh
Cathryn E. Boyer.....Uniontown
Blair O. Young.....Howard
Pearl E. Weaver.....Howard
Frederick Norman.....State College
Eva M. MacLaren.....Holidaysburg

Gypsy Girl Repays Kindness.
Mrs. A. D. Karstetter, of near Loganton, gave a gypsy girl a meal at her home some years ago. Recently the gypsy girl repaid the courtesy by sending Mrs. Karstetter a pattern for a gypsy quilt. Mrs. Karstetter has the quilt quilted and presented it to Col. H. W. Shoemaker, of McElhattan, as a compliment to Mr. Shoemaker, who has written and lectured on the gypsies.

Transfers of Real Estate.

A. J. Shook, exec., to William B. Ripka, tract in Gregg twp.; \$1,005.
O'Ver C. Witmer, et al, to James H. Runkle, tract in State College; \$1,000.
Joseph K. Confer, et ux, to Frank F. Palmer, tract in Potter twp.; \$1,750.
J. D. Keller, et ux, to C. Z. Bourley, tract in State College; \$800.
Rachael Lucas to Minnie B. Barger, tract in Howard; \$1,500.
Henry Meyer, exec., to John J. Shultz, tract in Miles twp.; \$810.

FARM CALENDAR

Timely Reminders from
The Pennsylvania State College

Give Hoibed Plants Care—By this time perhaps the cabbage and lettuce seed in the hoibed has germinated. If so, it is important that ventilation and watering be watched carefully. Give the plants some air, even on cold days. Lack of fresh air results in weak, spindly plants that readily "damp off." Open the frame sash on the leeward side.

Drain the Wet Spots—Locate the frozen places in the winter wheat fields. These are probably due to surplus water. Repetition of this killing may be avoided by relieving the wet spots through the use of a tile drain properly installed.

Ice Supply Is Going—Winter will soon be over and the chance to put up an ice supply will be gone. It may even now be too late to get the best. About two tons of ice are necessary to cool the milk from each cow during the warm weather, say dairy specialists of the Pennsylvania State College.

Entertain the Birds—Birds are always our greatest garden friends. Shrubs and trees which attract them may be selected for planting on the home grounds. Bird houses and bird baths that will be ornamental as well as useful can be provided for them.

Grow a Ton Litter—Are you planning to grow a ton litter this year? Cost accounts show that the ton litter provides a profitable pork producing machine. Any litter farrowed between February 1 and May 30 may be nominated for the Keystone Ton Litter club. Even 7-pig litters sometimes reach the ton mark in 180 days. Chances are better for purebreds than grades are eligible.

NEW ADVERTISEMENTS.

FOR RENT.—I have two desirable store room for rent. Inquire of D. J. Nieman, Millheim, Pa. 81f

STORE FOR SALE—Stock of general merchandise; good stand; business established; centrally located. Apply P. O. Box 127, O. H. Bowersox & Son, Middleburg, Pa. 2t

FOR SALE.—I have for sale a practically new colony house, size 8x10 ft. Will be sold right.—Paul S. Grove, Spring Mills; Bell 29R2. 2t*

FOR SALE.—Pure-bred Walker strain fox hound, 5 months old.—C. S. Smith, Centre Hall; Bell 'phone.

FOR SALE.—1 Guernsey cow, with calf by side; 7 shoats, weighing from 70 to 100 lbs.—James E. Frohm, Centre Hall; Bell 'phone 74R3.

WILL DO HAULING.—I am equipped to do both local and long distance hauling. Prompt service and reasonable rates. If you need me call Bell phone 29R2, Spring Mills.—Paul S. Grove, Spring Mills. 2t*

FOR SALE.—House and lot, situated in Spring Mills, known as the John Smith home. Anyone interested, should see Mrs. Widom C. Gramley, Spring Mills, Pa. 4t

SHOE SALE.—I am offering 100 pair Ladies' Shoes, best quality, high and low cut, \$6 to \$8 values, at great sacrifice prices. Come in and look them over, they are fine values.—G. W. TRESSLER, Centre Hall, Pa. *

TENANT WANTED.—Tenant wanted for farm of 215 acres, 2 1/2 miles west of Old Fort. Will rent for the one-third. If farm is too large, have attractive proposition for the right party.—M. H. Spiker, Pleasant Gap, Pa. 610*

FOR SALE.—Ivored colored metal bed and springs, practically new. Call Bell 'phone 23R2, Centre Hall.

FOR SALE.—Four good cows, freshening 6th to 16th. Will sell any or all.—Bruce W. Ripka, 'phone Centre Hall 30R11.

WANTED TO BUY.—Clover seed; send sample and state amount you have to sell.—A. B. Lee, Spring Mills.

ROAD HOUSE FOR RENT.—Located on State Highway in Seven Mountains, near Foust place. Will improve buildings for right party. Inquire at Milroy.—R. D. REARICK. 41f

HAMMERMILL BOND
We use it when
PRINTING
GOOD JOBS
Give Us
Yours

EXECUTOR'S NOTICE.

In the Estate of PHILIP A. LIESTER late of Potter Township, Centre County, Pa.

Letters testamentary on above estate having been duly granted the undersigned, all persons knowing themselves indebted to the estate are requested to make immediate payment, and those having

claims against the same to present them duly authenticated for settlement.

MRS. PHILIP A. LIESTER
Executrix.
Spring Mills, Pa., R. D. 1
C. B. NEFF, Executor,
Centre Hall, Pa., R. D. 1.

Public Sale Register

Sale notice under this head is carried free of charge when bills are printed at this office. To all others the charge is \$1.00.

SATURDAY, MARCH 6th, at 12:30 sharp, 3 miles east of Pottery Mills, by Mrs. Margaret Aukerman: Household goods, etc.—E. M. Smith, auct.

TUESDAY, MARCH 9th, at 10 A. M., 3 miles west of Centre Hall, on the R. H. Potter farm, by R. H. Potter: Farm stock and implements.—E. M. Smith, auct.

FRIDAY, MARCH 12, at 1:00 P. M., at late residence of Mrs. Adda M. Finkel, Spring Mills, by R. R. Finkel, Exec.: Household goods and real estate.—E. M. Smith, auct.

SATURDAY, MARCH 13, at 12:30 P. M., in Centre Hall borough, Mrs. D. J. Meyer will sell household goods.—E. M. Smith, auct.

TUESDAY, MARCH 16, at 10 A. M., 2 miles East of Boalsburg, on the Hess farm, Fred Cox will sell: Horses, colts, cows, young cattle, hogs, full line farm implements.—E. M. Smith, auct.

WEDNESDAY, MARCH 17th, at 10 A. M., 1 1/2 miles East of Spring Mills, at Beaver Dam, by C. P. Long: Farm stock and implements.—E. M. Smith, auct.

FRIDAY, MARCH 19, at 10 A. M., 2 1/2 miles west of Spring Mills, in Georges Valley, by Mrs. S. C. Decker: Farm stock and implements. Most of cattle are purebred Holstein.—E. M. Smith, auct.

FRIDAY, MARCH 19, at 10 A. M., on the Col. Boal farm, 1/4 mile west of Boalsburg, on the Pine Grove Mills road, Geo. L. Homan will sell: Live-stock, including an accredited herd of cattle, 51 head of hogs, and farm implements; clean-up sale. L. F. Mayes, auct.

SATURDAY, MARCH 20, at 12:30 o'clock, at Linden Hall, by Frank McClintic: 25 head cattle and lot hogs.—E. M. Smith, auct.

MONDAY, MARCH 22, at 12 o'clock, 3 miles west of Madisonburg, W. C. Widemire will sell: Farm stock and implements; clean-up sale.—Wise & Hubler, aucts.

TUESDAY, MARCH 23, at 10 A. M., on the Carson farm, 2 miles East of Pottery Mills, by Brooks and Carson: Farm stock and implements; clean-up sale.—E. M. Smith, auct.

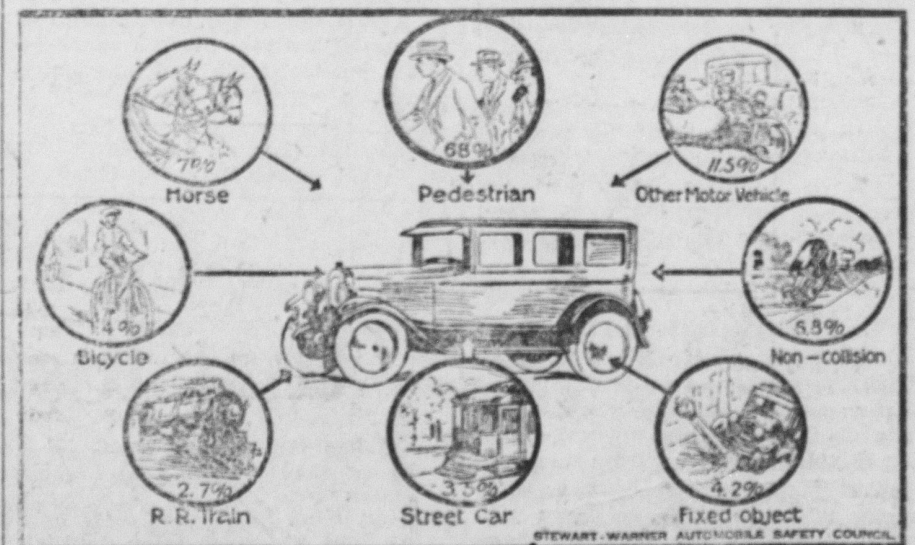
WEDNESDAY, MARCH 24th, at 10 A. M., 2 miles West of Spring Mills, in Georges Valley, by J. C. Reeder: Farm stock and implements.—E. M. Smith, auct.

THURSDAY, MARCH 25th, at 10 A. M., 3 miles west of Old Fort, by A. J. Cummings: Horses, cattle, sheep, hogs and full line farm implements.—L. F. Mayes, auct.

FRIDAY, MARCH 26, at 10 A. M., on the Meyer farm at Centre Hill, by C. G. St. Clair: Farm stock and implements.—E. M. Smith, auct.

SATURDAY, MARCH 27, 10 A. M., 5 miles south Centre Hall, A. O. Detwiler will sell: Horses, cattle, hogs, full line farm implements. L. F. Mayes, auct.

Pedestrian Greatest Victim
of Automobile Accidents



THE PEDESTRIAN is the greatest sufferer in automobile fatalities, according to records analyzed by the Stewart-Warner Safety Council for the prevention of automobile accidents. No complete record is available for the United States as a whole, but a report based on 3,023 auto fatalities occurring in the first seven months of 1925, covering a population of thirty-one million, is significant. Two thousand of these 3,023 fatalities have been classified according to type. Sixty-eight per cent of the victims were pedestrians, 11.5 occurred with another motor vehicle; 7 per cent with horse vehicles, 4.2 with fixed objects such as lamp posts, 3.5 per cent with street cars, 2.7 with railway trains and 1.4 per cent with bicycles. The remaining 6.8 per cent involved no collision. The small proportion involving railway trains is encouraging and doubtless due to the gradual abolition of unguarded grade crossings. The menace to the pedestrian, however, is alarming, and calls for greater care on his part in crossing streets and on the drivers for more careful driving.

ADMINISTRATOR'S NOTICE.

In the Estate of WILLIAM P. LINGLE, late of Gregg Township, Centre County, Pa., deceased.
Letters of administration on above estate having been duly granted the undersigned, all persons knowing themselves indebted to the estate are requested to make immediate payment, and those having claims against the same to present them duly authenticated for settlement.
SARAH J. LINGLE, Admrx.
JEROME I. LINGLE, Admfr.
Spring Mills, Pa.

EXECUTOR'S NOTICE.

In the Estate of ADDA M. FINKEL, late of Gregg Township, Centre County, Pa., deceased.
Letters testamentary on above estate having been duly granted the undersigned, all persons knowing themselves indebted to the estate are requested to make immediate payment, and those having claims against the same to present them duly authenticated for settlement.
R. R. FINKEL, Executor,
Millinburg, Pa.
Orvis & Zerby, Attys. o12

ADMINISTRATOR'S NOTICE

In the Estate of GEORGE W. GINGERIC, late of Centre Hall Borough, Centre County, Pa., deceased.
Letters of administration on above estate having been duly granted the undersigned, all persons knowing themselves indebted to the estate are requested to make immediate payment, and those having claims against the same to present them duly authenticated for settlement.
H. L. EBRIGHT, Admfr.
Centre Hall, Pa.

ADMINISTRATOR'S NOTICE.

In the Estate of CLEMENT F. DEININGER, late of Centre Hall Borough, Centre County, Pa., deceased.
Letters of administration on above estate having been duly granted the undersigned, all persons knowing themselves indebted to the estate are requested to make immediate payment, and those having claims against the same to present them duly authenticated for settlement.
H. LEIGH EBRIGHT, Admfr.
Centre Hall, Pa.

WEEK-END PROGRAM OF PHOTO-PLAYS AT—

Scenic & Moose Theatre
BELLEFONTE

AT THE SCENIC.

THURSDAY, FEBRUARY 25

"WAGES FOR WIVES"

Headed by Jacqueline Logan and Creighton Hale. Taken from John Golden's stage success, "Chicken Feed." Now here is the question, "Should wives have wages just like anyone else—or should they be content with whatever their husbands see fit to give them for household expenses each week?" Also—
Pathe News and Review.

FRIDAY, FEBRUARY 26

"PALACE OF PLEASURE"

Starring Betty Compton and Edmund Lowe. Never has there been a more colorful personality in history than Lola Montez at whose bidding political destinies of Europe were moulded, revolutions fought, Kings have abdicated their thrones and royal courts of the Old World thrown into social upheaval. Also—
7th Chapter of "The Green Anchor."

AT MOOSE TEMPLE THEATRE

FRI. & SAT., FEBRUARY 26 & 27

"MANNEQUIN"

This is the Liberty Magazine \$50,000 Prize Winning Story. A beautiful cloak model striving for love and happiness but snared in the jazz pitfalls of a great city. See her heart-gripping story revealed on the screen by the master director, James Cruze.

FOR SALE
PUREBRED
GUERNSEY
HEIFER
AND BULL
CALVES
J. H. DETWILER
CENTRE HALL, PA.

MACHINE SHOP
WHERE IS DONE ON SHORT
NOTICE
ACETYLENE WELDING
WOOD WORK, WAGON WORK
W. A. HENNEY
CENTRE HALL, PA.
Bell Phone 12R3 121f

FEBRUARY FURNITURE SALE—

During this month I will allow a discount of 20 per cent. on all cash purchases of furniture and rugs (except kitchen cabinets). A large clean stock of Furniture, Rugs and Linoleums to select from. No extra charge for delivery. Bell 'phone 3R11—S. M. CAMPBELL, Millheim, Pa. 5t

Insurance and
Real Estate
Want to Buy or Sell?
SEE US FIRST
Chas. D. Bartholomew
CENTRE HALL, PA.

The Centre Reporter, \$1.50 a year.

BUY
HOLLAND LINEN
By the Pound
—It's Cheaper;
—Much Cheaper.
In a Box of Holland Linen Paper you get THREE TIMES the amount of writing material you do in the average box of stationery. Buy it this way, for 50c the Box at the Reporter Office. Envelopes to match, at 15c for pack of 25.

The Centre Reporter, \$1.50 a year.

Boosting Pays
Little is ever gained by finding fault, by scolding, nagging or knocking. Be at least a booster for your own business, it pays. That's why we are boosting our business in a modern way through newspaper advertising. Our Bank is a Booster Bank. We want more business. We want to see our bank growing bigger, stronger, every year, and it is doing just that. Why? Because we try to boost instead of knock and the people appreciate the fact.
THE FIRST NATIONAL BANK
CENTRE HALL, PA.
5 PER CENT INTEREST ON TIME AND SAVINGS DEPOSITS



More than just
building materials
Almost any lumber dealer can supply you with the building materials you need for a specific job—so many feet of lumber—bundles of shingles—pounds of nails—or even the genuine Beaver Board. That's really a small part of the job. When you buy your materials from us you receive our building advice that has been gathered from years of actual experience. That item doesn't show on your bill but it's a mighty important one—one that will mean a saving for you. And we have tried to buy only the very best materials for our stocks. We are sure that you will appreciate our service as much as the speedy delivery of materials. You should at least consult us before you place an order for building materials.

PARK R. HOMAN
STATE COLLEGE, PA.
Call us Bell 'Phone 40-M, and reverse charges.
REPRESENTED BY—
W. B. ("BILL") SWARTZ.

SMILES BY MILES
THE BOYS WOULD AVOID GRACE AND MAYME
WEAK NERVES AND THE BLUES WERE TO BLAME
TILL THEY TOOK MILES' NERVINE
NOW WHENEVER THEY'RE SEEN
MEN FLOCK ROUND THEM LIKE MOTHS ROUND A FLAME