

THE CENTRE REPORTER  
THURSDAY, NOVEMBER 12, 1925.

POTTERS MILLS.

The Stork paid another visit to our village last Wednesday, and left a baby girl at the Earl Smith home. Mr. and Mrs. Floyd Palmer and Mr. and Mrs. Will Mayes, of Milton, took supper last Monday evening at the home of F. F. Palmer. The Tusseyville W. C. T. U. met on Saturday at the G. H. McCormick home. Stewart Long, of Lewistown, a former Potters Mills boy, dropped dead in the Viscoe plant on election day. The funeral was held from his late home in Lewistown on Friday morning, and burial made at Sprucetown. He was aged 52 years. He leaves a wife to survive him, his wife (nee Salona Richards) and son, John, and daughter, Eva; also two sisters. Mrs. H. A. McClellan, of Tusseyville, visited on Sunday at the Foust and Fleisher homes. Mr. and Mrs. John Royer spent Sunday at the home of their son, Fred, in Seven Mountains.

PINE GROVE MILLS.

A. C. Kepf is shy a valuable horse of tetanus, coming from a nail in the foot. During the storm last Thursday the steeple on the Pine Hall Lutheran church was blown off. Conrad M. Fry, an old engineer on the Pennsy., residing in Altoona, while arranging the engine for a trip west, slipped and fell into a pit, striking his head. He sustained serious injuries about the face and head. He was rushed to the hospital, blood gushed from his nose and mouth for several hours. Last reports say he is improving. He is a son of Dr. W. H. Fry, of Pine Grove Mills. A. C. Dale, connected with the Sheffield Farm Creamery company, at Bellefonte, has been transferred to Mifflinburg and will have charge of the Coburn, Mifflinburg and Lewisburg plants. He expects to reside at Mifflinburg as soon as a suitable house can be procured. Mrs. Rosa Morris, of West Virginia, is visiting her Centre county relatives, stopping with her sister-in-law, Mrs. Sallie Burwell, near town. On election morning Charles Strouse a school boy, in his Dodge car, accompanied by his sister and two other school girls, and travelling at a fast clip, crashed into the Myers' bus at the corner of Atherton St. and Beaver Ave., State College. Charles came but with a broken arm and some painful bruises. His sister sustained wounds requiring a dozen stitches to close up, and the others escaped with but a few scratches. The Dodge car is on the junk pile, for it is not worth repairing. \$1000 will be required to repair the bus, the doors and sides being crushed, and other damage done.

Dropped Dead on Ball Field.

Mrs. Catharine Carter Barrows, wife of Rosa W. Barrows, dropped dead on the State College ball field where she had gone to witness the State-Notre Dame game. She held a prominent place in civic, social and religious circles in her home city of Lock Haven. She was accompanied on the trip by her husband, Hon. and Mrs. Charles Dun and Miss Elizabeth Peale. The party had walked but a short distance from the car when Mrs. Barrows collapsed.

FARM CALENDAR

Weekly Reminders from The Pennsylvania State College

Let Sunshine In—The poultry house flooded with sunlight is more healthful and sanitary than a dark one. It also tends to make the flock contented. Eggs come from contented hens. Attend "Hort" Week—Horticulture Week at the Pennsylvania State College, November 17 to 20 promises to be a very interesting time for fruit and vegetable growers. You are invited to come and exchange ideas with your fellow growers. Fun will be mixed with work in just the right proportion to make you feel glad you did not miss it. Pick Those Exhibits—Now is the time to select those specimens you are planning to exhibit at the State Farm Products Show at Harrisburg, January 13 to 22. The local or county show is a good place to test the strength of your exhibit. Have the Machinery—Have the farm tools and machines not in use been housed for the winter? Greasing the working parts will prevent rusting and insure more satisfaction when the machine is started next year. If a lot of needed repairs is made when the machinery is put away, the parts may be ordered and put on before the spring work starts.

EXECUTOR'S NOTICE.

In the Estate of AGNES L. CARTEER, late of Centre Hall Borough, deceased. Letters testamentary on above estate having been duly granted the undersigned, all persons knowing themselves indebted to the estate are requested to make immediate payment, and those having claims against the same to present them duly authenticated for settlement. E. T. JAMISON, Executor, Spring Mills, Pa.

Gall Stones

NEW BOOKLET, written by Gall Stone Specialist, explains scientific home treatment prescribed for over 30 years. Before risking operation—read about success of this method for catarrhal inflammation and infections of Liver, Gall Bladder and Gall Ducts associated with Gall Stones. Sent free to anyone who writes. DR. E. E. PADDOCK, 121 E. 108, Kansas City, Missouri adv.

MILLHEIM.

(From the Journal) Miss Kathryn Lynn of Coburn, was the guest of her friend, Miss Jean Hosterman. Charles Sechrist, of Lewisburg, was an over-Sunday visitor with his brother, George Sechrist. H. K. Harter, of Altoona, spent several days last week with his mother, Mrs. Minnie Harter. Mr. and Mrs. Emerson Bateman on Friday evening entertained a number of friends at a masquerade party at their home. Mrs. David E. Kuhn and children, of Dewart, were visitors with her parents, Mr. and Mrs. E. E. Knarr, several days during the week. Mr. and Mrs. J. G. Eby, of Portage, spent a short time with relatives here on Tuesday, coming from Woodward, where they had spent the night with Mr. Eby's parents, Mr. and Mrs. N. W. Eby. Lester Nieman, a student at Penn State, accompanied by a fraternity brother, Morris Gerber, also a Penn State student, of Harrisburg, and Miss Flora Harrison, of Lock Haven, were week-end visitors at the D. J. Nieman home. Mr. and Mrs. J. L. Winegardner motored to East Salem, and returning were accompanied by Mr. Winegardner's mother, Mrs. Sarah Winegardner, who will spend the winter here. Mr. and Mrs. Wayne Rose and little daughter, of Mansfield, O., were motor arrivals in Rebersburg for a brief visit with Mrs. Rose's father, G. A. Corman. They were accompanied by Mrs. Rose's aunt, Mrs. S. A. Cole, of the same city, who is visiting with Dr. and Mrs. Orville M. Shull, of North Street, and other relatives. Mr. and Mrs. J. C. Keen, son Ralph and daughter, Margaret, and Merrill Rishel, the latter living with the Keen family, motored from Altoona to Millheim Saturday and visited with home friends until Sunday afternoon. "Cal," who is a P. R. R. engineer, had not been to his "old home town" for nearly two years and noted many improvements.

Tax Climax Reached!

We complain about constantly increasing taxes and then read that in this State more than two-thirds of the revenue of the Commonwealth last year was spent for schools and highways. That information silences our complaint long enough for time to read further that the per capita cost of government in Pennsylvania in 1924 was \$8.07, which is sixty-one cents higher than the preceding year and nearly double the cost in 1913. That's truly startling and serious. If that rate of increase between 1913 and 1924, nearly 100 per cent, in six years continues another generation, the citizens of tomorrow will be paying per capita taxes annually equal to their per capita wealth. There's a halting place somewhere and Pennsylvanians have just about reached that point.

Transfers of Real Estate.  
Lillian A. Lehenstaler, et ux, to William B. Keeler, et ux, tract in State College; \$1,025.  
Lillian A. Lehenstaler, et ux, to Franklin G. Williams, tract in State College; \$7,000.  
Lillian A. Lehenstaler, et ux, to Raymond W. Harm, tract in State College; \$1,925.  
William H. Pultz, et ux, to Katherine R. Brouse, tract in Miles twp.; \$1,100.  
Walter T. Elder, et ux, to Andrew S. Hogan, tract in State College; \$1,600.  
James F. Crust, to John W. Neese, tract in Spring twp.; \$1,200.  
D. Peters, et ux, to Dory Gussallus, tract in Walker twp.; \$1,000.  
John L. Holmes, et al, to Robert T. Hafer, tract in State College; \$500.  
Daniel B. Weaver to I. Blaine Hanselman, tract in Miles twp.; \$125.  
James M. Johnson to G. U. Smith, tract in Walker twp.; \$2,500.  
Linn B. Myers, et ux, to T. A. Meyers, tract in Penn twp.; \$1.

MACHINE SHOP  
WHERE IS DONE ON SHORT NOTICE  
ACETYLENE WELDING  
WOOD WORK, WAGON WORK  
W. A. HENNEY  
CENTRE HALL, PA.  
Bell Phone 1383

WEEK-END PROGRAM OF PHOTO-PLAYS AT—

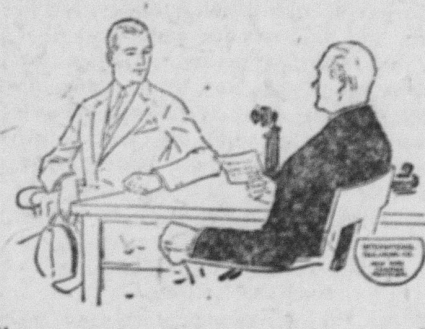
Scenic & Moose Theatre

AT THE SCENIC.  
Thursday, November 12th  
"THE ANCIENT HIGHWAY," starring Jack Holt, Grita Nissen and Noah Beery. James Oliver Curwood's latest story. This is a romance of high hearts and open roads—an outdoor picture of the most virile and appealing type, a story of conflict and love. A Paramount Picture.  
Also, PATHE NEWS and REVIEW.  
Friday, November 13th  
"FLOWER OF THE NIGHT," with Pola Negri. Pola as a flaming American Carmen! In a love melodrama flashing with color, dazzling with beauty, startling with thrills. See Pola as a bewitching dance hall damsel.  
Also, Second Episode of the Great Serial, "WILD WEST," with Miller Bros. 101 Ranch Big Top Circus.

AT MOOSE TEMPLE THEATRE  
Friday and Saturday, Nov. 13 and 14  
"THE EVERLASTING WHISPER" starring Tom Mix. A drama of love and hate in the western hills.

THE RICHELIEU THEATRE

BELLEFONTE  
Where the Best in Pictures Is Shown  
Thursday, November 12th  
Super Special Production—"DRUSILLA WITH A MILLION" with Mary arr, Kenneth Harlan and a brilliant cast. During its entire run at the Capitol Theatre, New York, it was proclaimed one picture in a million by all the New York papers. It's vibrant with the love, laughter and tears of life. Also, First Run NEWS and SPECIAL COMEDY.  
Friday, November 13th  
Universal Special Production of the golden west; "THE OUTLAW'S DAUGHTER" starring Josie Sedgwick (the World's greatest Horse-Woman) and a brilliant cast. A story of adventure and romance amid the great open spaces.  
Also Special Comedy, "The Ace of Spades," and Short Subjects.  
Saturday (One Day Only)  
Lefty Flynn in his latest Comedy Thriller, "SPEED WILD." Thrills and Laughs from start to finish.  
Showing CONTINUOUSLY from 2 to 11 P. M.  
Adults, 25c. Children, 10c



A Good Suit is the Outward Symbol of Success—

And since you're judged by your appearance why not get a real good one while you're at it.

It will cost you no more to have it custom made by the INTERNATIONAL but it certainly looks it.

How about spending—say \$25, \$35 or \$40 ?

Will come to your home to take measurements if requested.  
D. C. MITTERLING  
CENTRE HALL

PUREBRED Registered Guernseys BRED FOR PRODUCTION.

8 HEIFERS --and-- 3 BULLS  
of exceptional good breeding, having A. R. Backing, are offered FOR SALE.  
Entire Herd T. B. Free  
J. H. Detwiler : Centre Hall

Insurance and Real Estate  
Want to Buy or Sell?  
SEE US FIRST  
Chas. D. Bartholomew  
CENTRE HALL, PA.

Real Winter Comfort at Low Cost  
To drive in comfort this winter you should have complete protection against rain, sleet, snow and wind. Only the finest closed car construction can give you that. The Chevrolet Coach body is Fisher-built—the same construction used on the world's finest cars. Doors and windows fit and stay tight to keep out wind and water. Rain or snow cannot penetrate the Fisher V-V one-piece windshield which gives you perfect vision and ventilation. Long semi-elliptic springs and balloon tires take the jars out of frozen roads. Yet you get all this in the world's lowest-priced Fisher Body Coach.  
Let us show you the quality features of this fine closed car and explain how easy it is for you to own one this winter.  
The Coach \$695  
Touring \$525  
Roadster \$525  
Coupe \$675  
Sedan \$775  
Commercial Chassis \$425  
Express Truck Chassis \$550  
ALL PRICES F. O. B. FLINT, MICH.

SMILES BY MILES  
SAN DURKE DIDN'T CARE FOR JACK BLOOD —  
THOUGHT HIM NERVOUS AND CROSS AND A BLOOM —  
TILL HE TOOK MILES' NERVINE —  
HE'S A CHANGED MAN SAID JEAN —  
SO SHE MARRIED — AND JACK WAS THE GROOM!

Children are Saving  
Did you know that during the past year 14,000,000 American school children had bank accounts?  
Think of it. Only a few years ago such a thing was unheard of. Even as late as 1921 only 900,000 school children had bank accounts. TODAY, FOURTEEN MILLION. Think of what this thrift and saving habit of the youngsters will mean for the next generation. If it is a good thing for the American school children, it is a good thing for YOU. We invite you to open an account.  
THE FIRST NATIONAL BANK  
CENTRE HALL, PA.  
5 PER CENT INTEREST ON TIME AND SAVINGS DEPOSITS

SEE or CALL  
Park R. Homan  
FOR LUMBER, ROOFING AND MILLWORK  
"WHERE QUALITY IS HIGHER THAN PRICE"  
Exclusive "Curtis" Dealer  
WE DELIVER ANYWHERE  
REPRESENTED BY—  
W. B. ("BILL") SWARTZ.  
STATE COLLEGE, PA.  
BOTH PHONES.

20% More Power  
The Million Dollar Motor of the Car for the Millions  
MORE than a million dollars worth of special machinery, dies, tools and instruments of precision are used exclusively in the production of the Star motor, which has these outstanding quality features:  
Honed Cylinders  
Silent Chain Drive  
Light Weight Pistons  
Bronze Bushed Rods  
Mirror Finished Bearings  
Fitted to one ten-thousandth inch  
Double Adjustment Carburetor  
Vacuum Fuel Feed  
Gas Tank at Rear  
Hot Spot Manifold  
Removable Valve Guides  
100% Machined Fly Wheel  
Forced Feed Lubrication  
Low-cost Transportation  
Star Cars  
STAR CAR PRICES f. o. b. Lansing, Mich.  
Commercial Chassis \$425  
Roadster \$525  
Touring \$525  
Couper, \$595  
Coach, \$695  
Sedan \$775  
FETTEROLF'S GARAGE  
CENTRE HALL  
STAR AND DURANT AUTOMOBILES