

Concrete protects against Fire, Tornado and Earthquake

# Ask Dad— See If He Knows

Father and mother are always thinking of your welfare—there isn't a thing within reason they wouldn't do for you.

But they may unknowingly have been risking your life every day.

When you are at dinner tonight with dad, ask him this question:

"Dad, is our school firesafe?"

Perhaps he won't be able to answer—he may not know.

Ask dad if he knows that somewhere in the country a schoolhouse burns every day. Ask him if he knows that one-third of all the schoolhouses in the country are nothing better than firetraps—maybe your school is one of them.

Of course dad knows that buildings can be built that will not burn. They are being built everywhere, every day.

If your school is firesafe, you're lucky. If it isn't, ask dad what he is going to do about it. You have a right to know.

The highest type of firesafe construction is concrete. Our illustrated booklet "Concrete Schoolhouses" contains a wealth of information on firesafe construction with which every parent ought to be familiar. Write today for your free copy.

"Build So It Won't Burn"

PORTLAND CEMENT ASSOCIATION  
111 W. Washington St.  
CHICAGO  
A National Organization to Improve and Extend the Uses of Concrete

OFFICES IN 30 CITIES

## Would Seem Last Word in Submarine Travel!

Mr. Harold J. Dartnall, a naval architect of Southampton, England, has invented a submarine investigator, a form of craft similar to a submarine. It is, however, much smaller, and can be constructed at a small cost.

It possesses the power to run on the surface, to dive to any desired depth and run level there, and return to the surface, at will.

The necessary illumination for seeing objects at such depths will be provided by powerful electric lights on the outside of the "investigator." One for examining the suitability of the sea floor for resting will, of course, be inside, and show through the glass observation floor at the bottom of the vessel.

Telephone communication with the towing vessel will be provided. It is claimed that the craft will be of great value in obtaining marine

photographs, specimens of life by means of trap nets, and in directing salvage operations beyond the depths at which divers can work.

### His Accomplishments

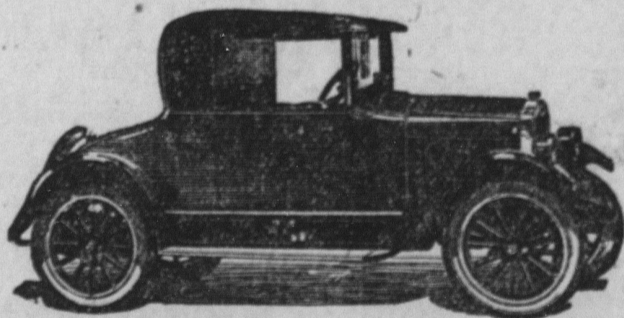
Jenks raised a large family. He raised the rent for them every month.

He raised a mustache. He raised potatoes and onions in the back yard.

He raised no objections to washing the dishes, handing over his salary to his wife, supporting his mother-in-law for six months in the year, or allowing Arthur, the Pekinese pup, to park in his pet Sunday chair. But when his wife used his new razor to peel potatoes—

He raised thunder.—Country Gentleman.

Silence is golden, but if you don't speak up, they'll pass the cake right over your head.



Star Coupester \$595, f. o. b. Lansing, Mich.

# MORE POWER

Low-cost Transportation  
**Star Cars**

PRICES f. o. b. Lansing, Mich.

COMMERCIAL CHASSIS	\$425
ROADSTER	\$525
TOURING	\$525
COUPSTER	\$595
COUPE	\$675
COACH	\$695
SEDAN	\$775

DURANT MOTORS, Inc.  
250 West 57th Street, New York

General Sales Dept.—1819 Broadway, New York

Dealers and Service Stations throughout the United States  
Canada and Mexico

PLANTS: Elizabeth, N. J. Lansing, Mich. Oakland, Cal. Toronto, Ont.

## Diseases Harm Alfalfa Fields

### Plants Attacked by Crown or Root Rot Have Died Out in Some Areas.

As a result of last year's attack of crown or root rot, many alfalfa fields are showing areas where the plants have died out entirely. The old crowns remain brown and no new growth appears to be starting although the main root may be sound.

If the tap root is cut across, a yellowish-brown discoloration of the ducts which supply the plant with water can usually be observed, and when examined under the microscope, these ducts are found to be either partially or wholly plugged with a gum-like substance. This material prevents the passage of water from the soil, and the characteristic wilting noticed during the growing season last summer results.

**Bacterial Infection Blamed.**  
Present studies indicate that the disease is due to a bacterial infection which may enter the crowns through the cut stems following the first cutting. Animal parasites in the soil may play a part in infecting the plants, but the alfalfa nematode, thought to be responsible for so much of the killing last season, probably has little to do with this disease.

Three-year-old stands and older seem to be the worst affected. This suggests that the disease is cumulative, and that possibly three or four years are required to bring about a sufficient plugging of the water ducts to interfere seriously with the growth of the plants.

The very wet season of 1923 may have given an abnormal stimulus to the development of the disease which was not felt until 1924, a dry year, when the soil moisture was short, and the plant's ability to utilize what moisture was present was greatly reduced by the plugging of the water ducts.

Alfalfa and sweet clover are both subject to this disease, and neither should be sown for at least five years on land that has had the crown or root rot. In the meantime, rotate the soil with other crops, and if experience has shown that red clover can be grown successfully as a hay crop, substitute it temporarily for alfalfa.

The bacteriological and botanical sections of the Colorado Agricultural Experiment station have experiments under way at the present time which should throw more light upon the cause, nature and control of the disease.—Walter G. Sackett, Bacteriologist, and L. W. Durrell, Botanist, Colorado Experiment Station.

## Storing Garden Produce for Use During Winter

There are two classes of crops which are put into storage, those that require warm, moderately dry storage conditions, and those that require cool storage. The various conditions are best met, of course, in a basement or cellar having a good furnace, but they may be pretty well met in a good cellar or cave. Without this you will have to depend upon storing the crops in a room in the house or an attic or in a pit, perhaps.

The pumpkins, squashes, some of the bulbs, onions and the like, should be kept where they will not freeze. The potatoes and root crops such as beets, turnips, carrots, etc., require a cool storage room. Store the root crops in tight packages. A good way to store turnips, carrots, beets and the like is to put them in good tight barrels, a layer at a time, each layer separated by a layer of dry leaves. Such barrels may be buried in a well-drained place, protected from rain or ground water in the garden. Cabbages may be wrapped separately in newspapers and buried in a barrel in the garden also, says a writer in an exchange. We have stored potatoes, apples, and in fact most all the crops which require cool storage in pits or barrels in a well-drained place in the garden very successfully, and aside from the slight difficulty of getting them out during the winter, we have had no reason whatever to complain of this method of storage.

## Four Important Factors Governing Alfalfa Crop

There are about four factors which usually govern the growth of alfalfa—drainage, inoculation, limestone and phosphate. Without deep drainage, alfalfa cannot extend its roots deep enough to make heavy growth or to continue its growth through a dry season. Without inoculation, the alfalfa cannot secure enough nitrogen to make a maximum growth. On soils which are rich in organic matter more nitrogen can be taken from the soil, but there is almost no soil rich enough in humus and nitrogen for alfalfa to make a heavy growth without being able to secure some air nitrogen by means of inoculation.

### Kill Mites and Lice

Cylinder oil and kerosene mixed and sprayed in the chicken house will keep the mites away, but it will hardly have any effect on the body lice. For these use sodium fluoride or good house powder, forcing it through the long feathers that cover the abdomen. In that place it will get all the lice in a very short time. This treatment should be repeated in about ten days in order to kill the lice that are hatched during that period.

## Good Stand of Red Clover Is Insured

### Failures Uncommon Where Fertilizer Is Used.

Can a good stand of red clover be insured? "Yes," says a soils specialist who has charge of a number of experiment fields in a leading corn-belt state. "In the past five years we have never had a clover failure on our plots where fertilizer has been applied, but we often had failures on the unfertilized plots."

Clover failures are expensive, especially when red clover seed is as high as it is now. The mortality of clover seedlings is high—so high that many farmers have been discouraged in growing clover, although they know it ranks high as a soil improver.

Lime and phosphorus are generally the limiting factors that prevent successful clover growing. Acidity of the soil is becoming more and more common. Every year the equivalent of a quarter ton of limestone is lost from each acre in the drainage water. Continued removal of crops has greatly depleted the phosphorus content of many soils. Both lime and fertilizer are important, but liming is often over-emphasized under conditions where lack of available phosphorus is the limiting factor. Some soils, too, need potash in addition to phosphorus.

Fertilizer will insure the red clover investment. On the majority of soils fertilizer applied on the grain crop seeded to clover will pay for itself twice—once in the increased grain yield and again in the clover following.

## Some Great Advantages of Alsike Clover Crop

Nearly every farmer knows that alsike clover will grow in wet sour soils, but it is not generally known that on any land it will grow as many tons of hay to the acre and carry as much nitrogen in the roots as red clover; besides, that it costs less and takes half as much seed to an acre.

In a ten-year experiment at the Ohio experiment station alsike clover made 2.6 tons of hay to the acre, whereas at the first cutting red clover made two tons.

Most farmers prefer red clover where it can be grown because it stands higher, lodges less, and will grow a second cutting. Though alsike clover yields as well as red at the first cutting, it appears to yield less because it does not stand as high in the field, but when weighed out as hay alsike sometimes has the advantage. Alsike will lodge. Where it is grown as hay it usually should be sown with other clovers and timothy. This practice, of course, is common, but many farmers do not realize that alsike is the earliest maturing of any of our common clovers. It is ten days ahead of red clover, and if planted with timothy the crop should be harvested when the timothy is just coming into head. If the crop is harvested early, indications are that there will be a better chance for a second cutting.

## Hog Wallow Rectangular in Shape Is Convenient

It is most convenient to make the hog wallow rectangular in shape with rounded corners and of a depth of not over 18 inches shallow at one end. A pool 15 to 20 feet long and 10 feet wide will be found amply large. The floor and side walls should be six inches thick, reinforced with wire mesh. A concrete floor four feet wide should be laid around the wallow to prevent the hogs from burrowing under or carrying in mud.

The wallow should be located near the water supply. If from a spring the water may flow through the pool continuously but if from a tank the wallow should be emptied and refilled at intervals. A good plan is to drain the outlet to the nearest line of tile.

## FARM FACTS

The early seeders get the fly.

Read this until you understand it: No bull is better than a scrub bull.

Many farms could very profitably keep a few hives of bees. Sweet clover honey is the highest quality.

Bran, cottonseed meal, linseed oil meal are generally cheapest in late summer.

Wheat to be used for seeding should be treated with copper carbonate dust before planting.

Land suitable for the production of potatoes is suitable for the production of standard varieties of apples.

Plan to attend a culling school or secure the service of some one who has attended. The time is ideal for catching the slacker hen.

Sweet clover deserves a trial on any farm where the soil is sweet. It will help to decrease the pasture costs by producing more feed per acre.

If you would have something that will serve day and night all fall, winter, and early spring, striving to protect and make your lands richer, sow cover crops.

Vines of peas, beans and the like should be pulled up as soon as the bearing season is over. Spread out in the garden to dry and then burn.

## A HOME WITHOUT CHILDREN

### Lacks the Greatest Joys of Life

#### Many Wives are Childless Because of Ill Health. Read How Lydia E. Pinkham's Vegetable Compound Helped Mrs. Benedict



MRS. MARY R. BENEDICT  
313 PAYSON STREET, KEWANEE, ILLINOIS.  
Kewanee, Illinois. — "When I was married about a year and a half I took Lydia E. Pinkham's Vegetable Compound because of ill health. I did not have any children. I now have two healthy little girls and I am sure I would not have had them had it not been for your medicine. Last spring and summer I got all run down, irregular, and I had awful headaches, and my back and side hurt me so that I could stay up only a short time. My limbs would get so tired and ache till I could cry. I started to take the Vegetable Compound again and used the Sanative

Wash, and it was not long till I was relieved. Now I do all my own work and help others. I sure praise Lydia E. Pinkham's medicines to any one I meet that is suffering from similar troubles. I think if mothers with girls would give it to them when they come to womanhood it would make them stronger. People who have known me all my life are astonished to see me now as I was always sickly when in my teens until I started taking the Vegetable Compound."—MRS. MARY R. BENEDICT, 313 Payson Street, Kewanee, Ill.

### Has a Beautiful Baby Girl Now

Bridport, Vermont. — "In the first place I wanted a baby, but none seemed to come to me. I just love children and my husband is away all day, so I was not happy at all. A doctor told me I could not have a baby until I went to a hospital. But my sisters said, 'Take Lydia E. Pinkham's Vegetable Compound and you will be O.K.' I was nervous, had organic weakness, with backache, sideache, headache and no strength. I had been in bed nearly a week when I began taking the Vegetable Compound. It was all that ever helped me and I just wish you could see my beautiful baby girl. I am fine now, and so is she. I am still taking the medicine as it keeps me well. You may be sure I am recommending the Vegetable Compound and always will."—MRS. A. W. HOWE, Bridport, Vermont.

### Five Per Cent to Charity

Farmers, laborers and clergymen lead in Wisconsin in the amount of their income given to charity, a survey of the income tax returns show. General average of contributions to charity in the state is 5 per cent, the investigation showed.

### The Right Answer

"Should wives be paid wages?" asks a writer in a recent article in a magazine. "Certainly!" says a married man of our acquaintance. "What do you think I send my wife out to work for?"—Judge.

## Children Cry for Fletcher's CASTORIA



**MOTHER:** Fletcher's Castoria is a pleasant, harmless Substitute for Castor Oil, Paregoric, Teething Drops and Soothing Syrups, especially prepared for Infants in arms and Children all ages.

To avoid imitations, always look for the signature of *Charles H. Fletcher*. Proven directions on each package. Physicians everywhere recommend it.

### Something Wrong

A man in England was telling his little niece about bird migration there, and the child asked if the robins went away in winter. "No," said her uncle, "the robin just puts on a new red waistcoat and stays."

The little one looked puzzled. "That can't be right, Uncle Tom," she said. "I've seen heaps of pictures of robins with red waistcoats, but never one with stay—" (corsets).

The city of Rome is planning the erection of a municipal bath house, built on the lines of the ancient Roman baths.

### Softening the Sound

Coed—"Your new overcoat is rather loud." Frosh—"It's all right when I put on a muffler."

**Cuticura Comforts Baby's Skin**  
When red, rough and itching, by hot baths of Cuticura Soap and touches of Cuticura Ointment. Also make use now and then of that exquisitely scented dusting powder, Cuticura Talcum, one of the indispensable Cuticura Toilet Trio.—Advertisement.

A man has quite a romantic rage if he is thrilled by the screech owl's notes and the mocking bird's, too.

## FOR Colds



# ASPIRIN

Proved safe by millions and prescribed by physicians for

- Colds Headache Neuritis Lumbago
- Pain Neuralgia Toothache Rheumatism

**DOES NOT AFFECT THE HEART**

*Safe*

Accept only "Bayer" package which contains proven directions. Handy "Bayer" boxes of 12 tablets. Also bottles of 24 and 100—Druggists.

Aspirin is the trade mark of Bayer Manufacture of Monoclonalacetate of Salicylic Acid