

# THE KEY TO BETTER BUSINESS

## FIRST NATIONAL BANK

CENTRE HALL

Where helpful service takes the place of just ordinary attention

3 Per Cent Compound Interest on Savings Deposits

### When You Need

A REAL MACHINE JOB Done or some EXPERT WELDING, bring it to me and I will do it RIGHT!

I Am Also Prepared to Do

Acetylene Welding

at Prices that Are RIGHT

Bring your work here. You will be pleased with results

W. A. HENNEY

CENTRE HALL, PA.

## CENTRE HALL GRAIN ELEVATOR AND COAL YARD

Wm. McClenahan, Prop.

Dealer in

All kinds of Grain, Winter, Spring and Blended Flour, Dairy, Hog and Poultry Feeds, Anthracite, Cannel and Bituminous Coal, Woven and Barb Wire Fencing.

Prompt Service and Deliveries Made In or Out of Town SATISFACTION GUARANTEED

### QUALITY MERCHANDISE and SATISFACTORY SERVICE

Now, Mr. Customer, on this motto we solicit your business.

Just unloaded our Second Car of— 55 PER CT. MEAT SCRAPS and

60 PER CT. DIGESTED TANKAGE ALSO, CAR LARRO FEED CAR SALT, and our Yard Filled With THE BEST OF COAL.

CENTRE HALL ROLLER FLOURING MILLS

Bradford & Co., Proprietors CENTRE HALL, PA.

### Compare the Prices

WE OFFER FOR

CHOICE WHITE EGGS

Figure over a 12-month period and you will have the answer

Then there's 50 per cent. Beef Scraps for \$3.50.

And 17 per cent. Laying Mash for \$3.25

A Combination That Spells PROFIT

Kerlin Poultry Farm

CENTRE HALL, PA.

### When Your Hens Lay Down

on you instead of LAYING FOR YOU it's tough, but we have something that will make them produce. Try our

'Symco' or 'Pratt's'

EGG MASH

YOU'LL BE SURPRISED

HOCKMAN'S

FULL LINE PRATT'S REMEDIES, BEEF SCRAP, OYSTER SHELLS CENTRE HALL, PA.

## C. P. LONG CO. GENERAL MERCHANDISE

...and...

## COAL

Our Guarantee of Quality and Our Service Go With Everything We Sell.

SPRING MILLS, PA.

## STROHMEIER'S

MARBLE AND GRANITE WORKS

Cemetery Memorials

STROHMEIER'S

CENTRE HALL, PA.

IT'S A REAL GOOD CAR



SIX

ASK FOR DEMONSTRATION OVER ANY MOUNTAIN IN THIS VICINITY J. S. BOOZER CENTRE HALL, PA.

### DO YOU KNOW

That it will pay you well to get a

RE-TREAD PUT ON YOUR OLD TIRE?

I do real work and GUARANTEE EVERY JOB. GIVE ME A TRIAL

S. R. RISHEL

Expert Tire Repairing and Retreading BOALSBURG, PA.

"For Economical Transportation"

A Chevrolet THIS SPRING

"For Economical Transportation" is more than a catch-phrase. Own a Chevrolet and the first few hundred miles will thoroughly convince you of its practical economy—on tires, gas and oil. These are the big items in the upkeep of your car.

Homan's Garage

Complete Line of Accessories; Also Tires. Expert Repair Work CENTRE HALL, PA.

### "PILGRIM"

IS THE REAL GOOD EVAPORATED MILK

Put up in Attractive Cans and made right here at home.

Ask your grocer for it by name

Don't Say Evaporated Milk, Say—"PILGRIM"

Continental Condensed Milk Co.

Preserved and Evaporated Milk SPRING MILLS, PA.

## BUY AT HOME!

Do you know that more property is controlled by retail stores than any other kind of business in this country. There is more money invested in retail stores than in all the banks. Their sales exceed that of the steel industry.

More taxes are paid by retail merchants than by any other class.

More people are employed in retail stores than in any other trade. You can put the plus sign on anything you like in regard to the retail business. Therefore it pays to consider the ways and means of improving the greatest activity in Centre Hall, Spring Mills, Boalsburg today. This can be done by Being a Booster for these towns, and by buying from their merchants. They are paying the heaviest taxes and are making this part of Penns Valley the Business Center of the County.

Back them up with your purchases here at home.

### TAXES RAISED BY HARD TIMES

Burden Is Lightest in Communities Boasting Live and Thriving Towns.

### FARMER FEELS THE EFFECT

is inclined to Forget, at Times, That He is Most Vitally Interested in Prosperity of Near-by Cities.

(Copyright, 1917, Western Newspaper Union.) Taxes are always heavy—to the man who has to pay them—but taxes in some communities are much higher than in others. If you have ever stopped to investigate the matter you have discovered that the lowest taxes are found in the most prosperous communities. And there's a reason.

The prosperous community has the lowest taxes because there is a large amount of wealth in the community against which the taxes may be assessed. There are prosperous merchants with large stocks of goods upon which taxes are levied. Property values are high and there are thriving industries which pay a large proportion of the taxes.

The higher the property values and the greater the wealth of the community the lower are the tax levies, for a lower tax on each hundred dollars of valuation is required to produce the necessary revenue for the administration of the city and county governments.

#### Other Taxes Are Raised.

On the other hand, take a dead town. Property values are low. Merchants' stocks are small and they have little money in the bank. Industries which ordinarily pay a large part of the taxes of a community have closed down. There are vacant store buildings which were formerly filled with stocks of merchandise upon which the owners paid heavy taxes. Who pays the taxes that were once paid by the merchants, the manufacturers, the bankers and the men who had large holdings of high-priced property? The taxes to conduct the city and county governments, to maintain the schools, to build and repair the roads must be collected from someone. Who pays them? The man who owns his little home or the vacant lot or two upon which he has been planning to build his home must pay double or triple the amount which he paid in the times when the town was prosperous, to make up for the taxes which are not paid now by

the merchants, the bankers, the manufacturers and the big property owners who bore the heaviest burdens of taxation when times were good.

The farmers in the country surrounding the town are also among the heaviest sufferers from the ebbing of the town's prosperity. A certain amount of money must be raised by taxation to provide for the expenses of the county. Roads must be built and kept in repair. Bridges must be built and maintained. Salaries of county officers must be paid. County institutions for the care of the sick and the poor must be maintained. In counties which contain one or more thriving towns, a large proportion of the taxes for the county are paid by the towns. The greater the wealth of the towns and the higher the property valuations, the lower the tax levy for the entire county. When the tax levy is low the burden placed upon the farmer is light.

#### Burden Falls on Farmer.

When the county contains no prosperous and wealthy towns, the greater part of the burden of taxation for the county falls upon the farmer. The value of the farmer's property does not fall in proportion to the value of the property in the town and the higher tax levy that results from the lower property values in the towns makes his taxes higher.

The farmer forgets at times that he is vitally interested in the prosperity of "his town." He thinks that it is up to the town to take care of itself and that it is up to him to take care of himself and he overlooks that fact that the prosperity of the town means as much to him as it does to those who live in it. The farmer who is inclined to overlook this fact has only to think of the matter of taxes and he is likely to change his point of view for taxes are one thing that neither he nor anyone else can escape, and they are one thing in which the farmer ordinarily takes a very lively interest.

#### How Farmer Can Help.

There is just one way in which the farmer can best promote prosperity in the town near which he lives and that is by spending his money in that town instead of sending it away to the far-distant city. Every time the farmer sends an order to a mail order house he helps to destroy the prosperity of his own community and to boost his own taxes. When he sends a dollar away from home he gets none of it back. When he spends a dollar at home, a part of that dollar comes back to him in some way. It helps the town where it is spent to provide a profitable market for his products and it helps the town pay a large part of his taxes.

The farmer is the one man in the community, above all others, who should have no love for the mail order houses for they are doing more to add to his troubles than any other one agency.

### The Saving Habit

#### Is a Good Habit

The optimist is the fellow who pays last week's board with next week's wages.

This is the same person who opens a Savings Account with real enthusiasm, makes regular deposits for a time and then tapers off to the vanishing point. His intentions are still good but his resolution is slipping.

Most successful men are optimists who have paved the way with bank deposit slips.

### First National Bank

SPRING MILLS, PA.

## \$350

BUYS A BUICK 1917

5-Passenger Touring Car in Excellent Condition with two Extra Cord Tires

IT'S A REAL BARGAIN

Come Here and See

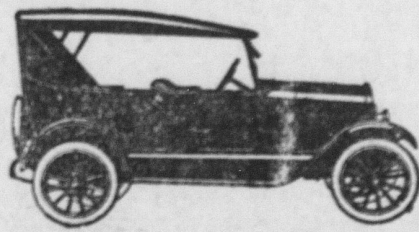
### Expert Repairing

ON ALL MAKES OF CARS

### Hauser's Garage

SPRING MILLS, PA.

### STAR AND DURANT



Real Bargains in Used Cars

Come in and get our prices today

FETTEROLF'S GARAGE

CENTRE HALL, PA.

### SPECIAL SALE

—ON—

KITCHEN CABINETS

NOW, \$45.00.

All Over Stuffed Leather Rockers, \$18.

All Other ROCKERS REDUCED.

Cotton Combination Mattress...\$9.00

Best Vacuum Washer on market, \$18.00

RUGS AND HOME-MADE CARPET

AT SPECIALS

### John Smith & Bro.

SPRING MILLS, PA.

—I AM NOW SELLING—

## COAL

AT THE FOLLOWING PRICES:

PUNXSUTAWNEY and LUMP... 30c Per Cwt.

CANNEL... 37½c Per Cwt.

PEA... 50c Per Cwt.

NUT & STOVE... 60c Per Cwt.

### A. M. GROVE

Coal, Lime, Stone, Cement, Roofing,

Hay, Straw

SPRING MILLS, PA.

### PATTERSON'S

—FOR—

GOOD GROCERIES

AND

General Merchandise

GOOD GOODS in an ATTRACTIVE CLEAN STORE

When you trade here—WE BOTH GAIN

PATTERSON'S

BOALSBURG, PA.

Berwick.—Injuries suffered in a fall caused the death of Mrs. Alvin Coles, long a resident of this place.

Gilberton.—George Ormsky, aged 85, a miner, died suddenly while conversing with relatives and friends.

Hazleton.—Members of the Hazleton Rotary Club distributed copies of the Declaration of Independence and United States Constitution in all of the school rooms of the city, West Hazleton and Hazel township.

Hollidaysburg.—James C. Druysart, philanthropist, has given \$87,500 to the Presbyterian Home for Aged Women in this city to complete first unit of the home, which will be named in his honor.

Tamaqua.—His abdomen pierced by a protruding pipe while he was riding on a motor in the Lehigh Coal and Navigation Company's No. 12 shaft, Wallace Sneddon, aged 28 years, was instantly killed.

Plains.—Thomas Duddy, of Youngstown, O., was struck by a Laurel Line car on a bridge and probably fatally injured.

Philadelphia.—Failure to take the key to his home to work with him caused the death of William Lloyd, 1618 South Conestoga street. When Lloyd arrived at his home he rang the doorbell, but his wife was out. He then asked his next door neighbor to let him use their roof so that he could enter his home. The neighbor agreed, and while Lloyd was walking from the neighbor's house roof to his own he slipped and fell twenty feet, suffering a fractured skull. He was taken to a hospital, where he died shortly after being admitted.

Sunbury.—Coroner Fisher said that an arrest is expected soon in the death of Ida, 4-months-old daughter of Walter Phillips, of Brady. The child had a hole under her left shoulder blade and a bloody ice pick and pierced undergarments of the child were found by County Detective Dunsavage, according to the coroner, who said he believed it a case of murder.

Pittsburgh.—More than \$250,000 worth of first mortgage bonds of the Nelson Bridge Coal Company, Nicholas county, W. Va., sought by the police of Washington, D. C., after the arrest of George L. Miller in that city, were found in the McGillic Savings and Trust Company's bank here. No information was received from the Washington police relative to the presence of the bonds here or why they are wanted.

Williamsport.—Engineer V. F. O'Brien and Fireman William Breen, both of Buffalo, were killed when the Philadelphia-Buffalo express on the Pennsylvania railroad left the tracks near Keating. The locomotive rolled over on its side, but the baggage car, dining car, two day coaches and two Pullmans, although leaving the rails did not overturn.

Coatesville.—Acting under a requested order from the state game authorities here, the postmasters of Chester county have instructed their rural postmen to carry "feed for the birds" with them on their routes. Since the recent snowstorm the pheasants, grouse and quail have been without sufficient nourishment to keep them alive and the game officials are doing everything within their power to preserve them. Nearly every carrier takes with him a bag full of wild rice or corn in his journey through the country sections and at different intervals places the food where the birds will find it.

Shenandoah.—Council sold a bond issue of \$200,000 at auction to Philadelphia brokers.

Lock Haven.—The mid-year State Sabbath School conference will be held here March 9, 10 and 11.

Hazleton.—About 200 girls employed at the Progressive silk mill at West Hazleton struck because of the discharge of one of their number.

Hazleton.—Twenty-four crippled children from this city and vicinity were operated upon by a Philadelphia specialist at a clinic under the auspices of the Rotary Club.

Glasgow.—Crushed by a fall of coal in a line William Holland died while being taken to a hospital.

Shenandoah.—Rev. John P. Briggs, of All Saints' Episcopal Church, celebrated his 15th anniversary as rector.

Altoona.—Run down by a shifting engine in the Pennsylvania railway yards, Charles I. Shellenberger, a car inspector, lost both legs, dying five hours later.

### F. V. GOODHART

FUNERAL DIRECTOR

FURNITURE

CARPETS

RUGS, &c.

CENTRE HALL, PA.

Bell Phone 37R2

### O. T. CORMAN

SPRING MILLS, PA.

DEALER IN

General Merchandise,

Poultry, Potatoes, Lard,

Fish, Oysters and All

Kinds Country Produce

Bring me your eggs and poultry

and receive highest market price

### PHILCO DIAMOND GRID BATTERIES

Guaranteed for two years by the manufacturers as well as ourselves

All Makes of Batteries Charged and Repaired.

Insyde Tyres—Blowout Proof and

Coffield Pure-Gum Tire

Protectors

CLYDE A. SMITH

CENTRE HALL, PA.