

## Why You May Need—



There are three main groups of prospective buyers of Chevrolet automobiles and commercial cars.

First, are all who know from comparisons or through the experiences of friends that Chevrolet provides the utmost dollar value in modern, economical transportation of people or merchandise.

Second, the large group of people with modest incomes who have the false impression that so good a car as Chevrolet is beyond their means.

They do not realize that due to engineering excellence and full modern equipment, Chevrolet operating and maintenance costs average so low that during the life of the car, it delivers modern, comfortable, fast transportation at the lowest cost per mile, including the purchase price.

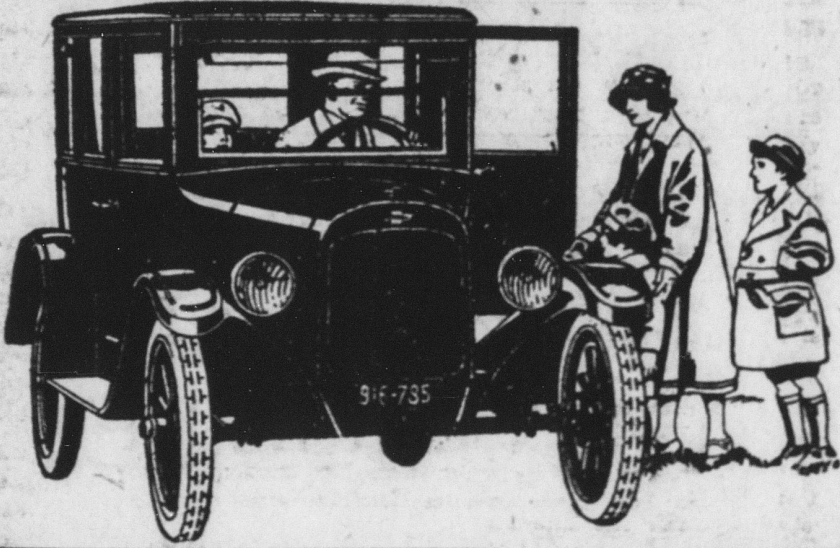
Third, the smaller but very important group of car owners of ample means, only a small percentage of whom as yet realize that Chevrolet as an extra car virtually costs them nothing, due to the reduction in their transportation expenses effected by it.

We respectfully suggest consideration, investigation and comparison of Chevrolet with any other car at any price.

Chevrolet Motor Company, Detroit, Michigan  
Division of General Motors Corporation

Prices f. o. b. Flint, Mich.

Superior Roadster . . . \$490	Superior Sedan . . . \$795
Superior Touring . . . 495	Superior Commercial Chassis 395
Superior Utility Coupe . . . 640	Superior Light Delivery . . . 495
Superior 4-Passenger Coupe 725	Utility Express Truck Chassis 350



### Bloviat, a New Word

There is a word which, so far as I know, is local to Washington, and largely to its newspaper and political fraternity. The word is "bloviat." It is not in the dictionary. (I have just looked and found there is no word of which the first four letters are "blow.") You pass from "blowing" immediately to "blow.") But although the word is not in the dictionary, those whose ears have quick apprehension of the meaning inherent in sounds, will already have guessed its significance. When a public man, especially one rather given to speechmaking, is invited to adorn and address the annual dinner of this or that, we say he has gone out of town to bloviat. The word carries an implication of ornate, rotund speech and partly of expansion of the ego.—Mark Sullivan in McNaught's Monthly.

### Cure for Insomnia

Insomnia victims have found strange cures, such as counting imaginary sheep passing through a gate, but an innkeeper in Europe, when she discovered one of her guests has not slept well, turns his bed so that it will face in another direction. She maintains from her long experience in catering to the comfort of travelers that some are "east and westers," while others are "north and southers," or "west and easters" when it comes to sleeping.

### Running a Boarding Cave

Officer Stonebat—You got awfully beat up. Some enemy do it?  
Widow Bonechisel—No, sultors; I killed and dressed an atrocious and served my boarders with real porterhouse steaks. Then they all proposed to me at once.

## Big Increase in Number of Cows

Dairying Around New York and Other Cities Makes Good Showing.

(Prepared by the United States Department of Agriculture.)

That farmers are constantly on the alert to take advantage of new opportunities as they arise is typically illustrated by the development of dairying around New York city, says the United States Department of Agriculture. Growth of the urban population and improved methods of handling and shipping milk have steadily widened the field of distribution. This is shown by the fact that from 1880 to 1920 the number of cows on farms in counties nearest the city increased 50 per cent, while the number on farms from 200 to 225 miles away more than doubled.

**Increase in Fluid Milk.**  
Fluid milk sold from the farms nearest the city doubled in quantity from 1880 to 1920, and quadrupled in the case of the farms farthest away. Counties nearest the city reached their maximum dairy production by 1900. Those situated more than 150 miles away made a gain of practically one-third between 1900 and 1920. Similar extensions of dairying areas have been made, through a lesser degree, around other large cities.

Another example of wholesale readjustment in farming policies due to a changed condition is furnished by the country along the Gulf and Atlantic coasts, where climatic conditions make the fight against the boll weevil exceptionally hard. Cotton acreage in parts of this region has been cut 50 per cent. Farmers are turning to the production of farm maintenance crops, velvet beans, peanuts, other forage crops, and pasture for the extension of hog raising, beef production and dairying. In some localities sugar cane for sirup, sweet potatoes, watermelons and other truck crops, are receiving increased attention.

### Farming Is Uncertain.

Readjustments now taking place in agriculture, say officials of the department, draw attention to a fact sometimes forgotten, namely, that changes are always going on in the basic conditions of farming due to the growth and distribution of population, the rise or fall of wages and prices, the heightened or lessened cost of transportation, crop pests and diseases, and other influences. Wide-awake farmers are quick to note these changes and modify their production policies accordingly. Farming today is more uncertain than it has been for many years. It is undergoing more necessary readjustments. Farmers who study the situation, and alter their plans to suit the circumstances, will be the first to cut their losses on crops that for any reason have become unprofitable, and the first to get their farms back on a paying basis.

### Finds Cut-Over Land Is Good Place for Poultry

Profitable use of cut-over land is one of the problems of any section in which much lumbering is done. F. M. Harrison of the Sunset Hill Farms, Lake, Miss., with the advice of the county agricultural extension agent, has tried poultry raising as a solution of the problem both for his own and for his neighbors' information. Starting in 1920 with one male bird and five hens of high-producing strains, he had by the next spring about fifty pullets, and by January, 1923, it had increased to 400 pullets. For the eight months from January to September, 1923, Mr. Harrison realized from his flock a profit of \$400 in addition to the value of the birds, which, by September, numbered 600. The profits were made almost entirely from the sale of eggs, according to reports to the United States Department of Agriculture, the price received averaging about 35 cents per dozen. Many people have visited the farm, some coming a distance of 75 miles, and reports show that nearly a hundred farmers who have studied the methods used on this farm are starting flocks. Mr. Harrison is increasing his flock and expects to devote additional time to his poultry plant.

### Some Things Live Stock Shippers Should Not Do

- Don't fail to examine cars for nails and holes before loading.
- Don't fail to erect partitions separating each kind of stock in the car.
- Don't fail to bed cars well, using sand, cinders or shavings in summer and straw or sawdust in winter.
- Don't fasten partitions to interfere with opening doors.
- Don't use poles spiked to side of car for partitions. They come loose and are likely to cause serious damage to passing trains and are difficult to remove at destination without injuring the car.
- Don't build temporary upper decks in single-deck cars. They are likely to fall down in transit and stockyards are not equipped to unload them.
- Don't overcrowd in the cars. Hogs should have sufficient room to lie down. It is cheaper to use two cars than to cause dead and crippled stock by overcrowding.
- Don't load calves in upper deck.
- Don't load hogs in the upper deck if you have a double-deck load of hogs and sheep.
- Don't load hogs under cattle.
- Don't load bulls loose with other stock. Partition or tie them.—Farmers' Exchange.

## Liming in Winter Is Good Judgment

Haul Larger Loads on Sled Than on Farm Wagons.

Some New York state farmers may find winter a good time to haul limestone for their land. Those whose farms are so situated that they have a long uphill haul from the railroad, and who wish to haul by sleigh, are likely to find winter hauling especially desirable, the New York State College of Agriculture says.

When the sleighing is good, larger loads can be drawn on a sled than can be hauled on a wagon at other seasons of the year. In winter there is a period of several weeks when this work may be done. This will enable one to haul the limestone without interfering too much with ice harvesting, butchering, wood cutting and other winter farm work.

If the weather is favorable and the snow is not too deep, limestone may be applied at any time during the winter. Burned and hydrated lime, however, may be put on more advantageously when the land can be worked so as to mix the lime with the surface soil soon after spreading. It will give better results this way than if left for some weeks on the surface. Unless mixed with the soil soon after spreading these more active forms go over to the same chemical form as limestone in chunks which cannot be mixed with the soil so completely as if stirred soon after spreading. Whatever its form, an intimate mixture of lime with the soil always gives best results.

Any kind of lime should be kept in a dry place. Lump limes sometimes piled in the field to slake. This results in considerable waste. Hydrated lime must be kept dry or it continues slaking and the bags may burst open, making it difficult to handle them and causing some waste. Further, it takes up weight so there is more to handle when it comes to hauling and spreading. This increase in weight and bulk may well be considered in spreading, so as to be sure that enough is used to grow the desired crop.

## Clover in Garden Will Provide Green Manure

It is a very good plan to sow some kind of clover on a part of the garden each year and, after letting it stand one season, plow it under for the green manure. It not only tends to place the soil in better condition mechanically, but the nitrogen the clover gathers from the air will be valuable. The roots and tops plowed under will furnish humus. The rest from garden crops starves out a lot of the insects, and when the ground goes back into garden it will be like a new soil of great fertility.

It is well to manure heavily just before seeding to the clover, as this will cause a heavier growth and the manure itself will be largely available when the garden crops need it the following years. Garden crops always get the best from manures after they have had a chance to rot well.

Alfalfa is even better than clover, and sweet clover will produce more growth in one year than either and the second year after the seeding the roots naturally decay and are easily plowed. It produces a very heavy growth quickly the second spring, and this can be plowed under then, but the heavy roots make this pretty difficult, though it permits using the ground for cropping the same year.

Liming the soil before seeding to any clover will be an advantage, for if the land is very sour no clover will make much growth. The first seeding to clover in the garden should be inoculated, but after that, if rotated every three or four years, no further inoculating will be needed, as the bacteria will remain there.—L. H. C. Kansas.

## Destroy All Cedars to Control Rust of Apples

Apple rust inhabits apple leaves and fruits during part of its life history and cedar trees during the other part. It is the fungus which causes the "cedar apples" which are so conspicuous during wet weather in the spring. The infestation on the apple is often severe enough to produce serious damage, and farmers who wish to fully protect their crop of apples should waste no time in destroying the cedars, as infection will occur during any wet spells for the next five or six weeks.

No profitable method of control has been devised except to destroy the cedars. It is possible to control by spraying but the cost is too great for it to pay. On the contrary, cutting the cedars for a mile or two on all sides of the orchard will accomplish control without further efforts. The profit from this operation depends on the size of the orchard, the number of trees to be cut, and the number of neighbors willing to co-operate.

There are other similar rusts of pears, quince, and haw which have one stage of the life history on cedars; but they are not so important economically as the apple rust.

## Use Grain for Horses After Roughage Diet

Horses that have been wintered mainly on roughage, such as hay, oat straw, and corn stover, should be started on grain again a month or six weeks prior to the beginning of spring work, because they must be gaining in weight and hardened up if they are to "hit the collar."



## Is Winter Time Your Backache Time?

DOES every cold, chill or attack of grip leave you lame, achy and all worn out? Does your back throb and ache until it seems you just can't keep going another day? Do you know these troubles are often due to weakened kidneys?

Winter's colds and chills throw a heavy strain on the kidneys. The kidneys are apt to weaken and fall behind in filtering the blood. Poisons accumulate and upset blood and nerves.

Then comes constant backache, rheumatic pains, headache, dizziness and kidney irregularities.

Don't wait! Delay is often serious. Use Doan's Pills—a stimulant diuretic to the kidneys. Doan's have helped thousands. They are recommended by users everywhere. Ask your neighbor!

"Use Doan's," Say These Good Folks:

Mrs. S. A. Horton, E. Fifth St., Big Stone Gap, Va., says: "I had terrible spells with my back and was in much misery from the disordered way my kidneys were acting. When I bent over I had to grab hold of something in order to straighten again. I suffered from dizzy spells and my kidneys acted sluggishly. Doan's Pills cured me of the attack."

Henry Nealey, R. F. D. No. 1, Big Stone Gap, Va., says: "I have done considerable heavy straining work in my life and my back gave out. I was distressed by sharp pains which seemed to be tearing my back to pieces. When I bent over my back was as stiff as a board. Every cold settled in my kidneys and these organs didn't act right at all. Doan's Pills relieved me in every way."

## Doan's Pills

Stimulant Diuretic to the Kidneys  
At all dealers, 60c a box. Foster-Milburn Co., Mfg. Chemists, Buffalo, N. Y.

### GIRLS! HAIR GROWS THICK AND BEAUTIFUL.

35-Cent "Danderine" Does Wonders for Lifeless, Neglected Hair.

A gleamy mass of luxuriant hair full of gloss, luster and life shortly follows a genuine toning up of neglected scalps with dependable "Danderine."

Falling hair, itching scalp and the dandruff is corrected immediately. Thin, dry, wispy or fading hair is quickly invigorated, taking on new strength, color and youthful beauty. "Danderine" is delightful on the hair; a refreshing, stimulating tonic—not sticky or greasy! Any drug store.—Advertisement.

Term "high brow" is applied to intellectual people, but people who are really intellectual can't be derided.

### DEMAND "BAYER" ASPIRIN

Aspirin Marked With "Bayer Cross" Has Been Proved Safe by Millions.

Warning! Unless you see the name "Bayer" on package or on tablets you are not getting the genuine Bayer Aspirin proved safe by millions and prescribed by physicians for 23 years. Say "Bayer" when you buy Aspirin. Imitations may prove dangerous.—Adv.

If the people made the laws by a popular vote, there would be teeth in them.

### "CASCARETS" FOR LIVER AND BOWELS—10c A BOX

Cures Biliousness, Constipation, Sick Headache, Indigestion, Drug stores. Adv.

Some fellows are always behind time until it is time to stop.

About the eyelids with Roman Eye Balsam at night and see how refreshed and strengthened your eyes are in the morning. Send now to 312 Pearl St., N. Y. Adv.

Anyway, a woman is always grateful to the man who gives her a chance to refuse him.

### ITCH!

Money back without question if HUNT'S SALVE fails in the treatment of ITCH, ECZEMA, RINGWORM, TETTER or other itching skin diseases. Price 75c at drug stores, or direct from A. B. Richards Medicine Co., Sherman, Tex.

### Cuticura Soap

AND OINTMENT

Clear the Skin

Soap 25c, Ointment 75c and 50c, Talcum 25c.

### Salesman Wanted

Splendid opportunity for the right man, no experience necessary, weekly advances, outfit free.

VIRGINIA NURSERIES

Richmond, Virginia.

Where He Shone

Teacher (exasperated)—Isn't there anything you can answer? Duce—Yeah, the telephone.

## Children Cry for "Castoria"

Especially Prepared for Infants and Children of All Ages

Mother! Fletcher's Castoria has been in use for over 30 years as a pleasant, harmless substitute for Castor Oil, Paregoric, Teething Drops and Soothing Syrups. Contains no narcotics. Proven directions are on each package. Physicians everywhere

recommend it. The kind you have always bought bears signature of

Wm. D. Fletcher

## One Reason for Nervous Disorders

YOUR doctor can tell you that nervous disorders are very common among Americans. One reason for this is found in the fact that they are great coffee drinkers.

Coffee contains caffeine, a drug, prescribed by doctors as an emergency stimulant for the heart and nervous system. It has a tendency to increase blood pressure, develop heart irregularities and cause digestive disturbances.

If you feel that coffee is not good for you, serve Postum as your meal-time drink.

Postum is a pure cereal beverage that refreshes and satisfies. It is absolutely free from caffeine or any other irritating drug.

Try a cup of Postum with your dinner or supper tonight. Postum is sold everywhere.

# Postum for Health

"There's a Reason"

Postum comes in two forms: Instant Postum (in tins) prepared instantly in the cup by the addition of boiling water. Postum Cereal (in packages) for those who prefer the flavor brought out by boiling fully 20 minutes. The cost of either form is about one-half cent a cup.

