

Quality Cars at Quantity Prices

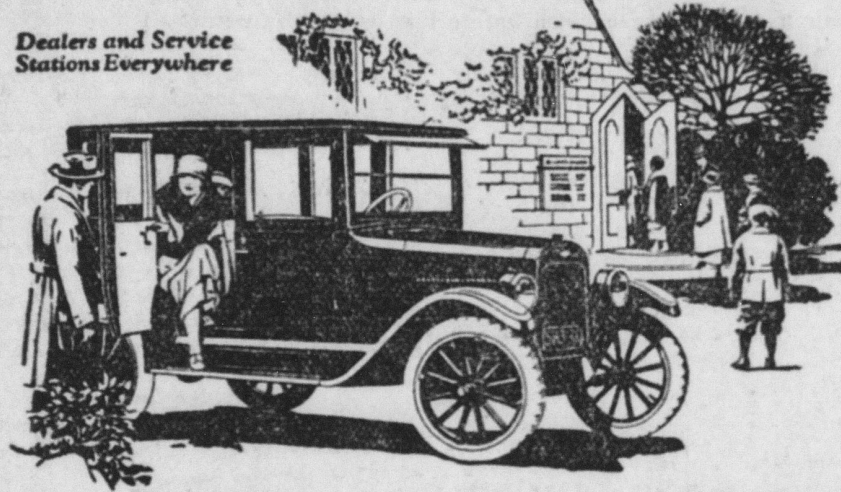
Chevrolet now leads all high-grade cars in number sold.
 Our new low prices have been made possible through doubling our productive capacity.
 We are now operating twelve mammoth manufacturing and assembly plants throughout the United States in which thousands of skilled workmen are turning out 2500 Chevrolets per day.

See Chevrolet First
 Notwithstanding our recent big reduction in prices the quality and equipment of our cars have been steadily increased, until today Chevrolet stands beyond comparison as the best dollar value of any car sold at any price and the most economical car to maintain.

Chevrolet Motor Co., Detroit, Michigan
 Division of General Motors Corporation

Superior Roadster \$490		Commercial Cars	
Superior Touring 495	Superior Commercial Chassis . . . \$395	Superior Light Delivery 495	Utility Express Truck Chassis . . . 550
Superior Utility Coupe 640			
Superior Sedan 795			

All prices f. o. b. Flint, Michigan



Argument for Industry. Old Hen—I'll give you a piece of good advice.
 Young Hen—What is it?
 Old Hen—An egg a day keeps the butcher away!—Progressive Grocer.

Privileges of Giving. Self-sacrifice is not sorrow or gloom. That is true because love never counts what it gives, and the greatest pleasure of life is the privilege of bestowing.

Demand  **ASPIRIN**

SAY "BAYER" when you buy—Genuine
 Proved safe by millions and prescribed by physicians for
 Colds Headache Neuralgia Lumbago
 Pain Toothache Neuritis Rheumatism

Genuine Accept only "Bayer" package which contains proven directions. Handy "Bayer" boxes of 12 tablets Also bottles of 24 and 100—Druggists.
 Aspirin is the trade mark of Bayer Manufacture of Monocetateester of Salicylicacid

Your doctor advises internal cleanliness

HE will tell you that the first results of constipation—headache, sleepless nights, biliousness, backache, etc.—warn that the body is flooded with intestinal poisons. In time, these poisons may cause the breakdown of health and lead to serious disease. In constipation, say intestinal specialists, lies the primary cause of more than three-quarters of all illness including the gravest diseases of life.

Hence, doctors urge internal cleanliness—regular and thorough removal of food waste from the body

Laxatives Aggravate Constipation
 Laxatives and cathartics do not overcome constipation, says a noted authority, but by their continued use tend only to aggravate the condition and often lead to permanent injury.

Why Physicians Favor Lubrication
 Medical science, through knowledge of the intestinal tract gained by X-ray observation, has found at last in lubrication a means of overcoming constipation. The gentle lubricant, Nujol, penetrates and softens the hard food waste and thus hastens its passage out of the body. Thus Nujol brings internal cleanliness.

Nujol is used in leading hospitals and is prescribed by physicians throughout the world. Nujol is not a medicine or laxative and cannot gripe. Like pure water it is harmless.

Get rid of constipation and avoid disease by adopting the habit of internal cleanliness. Take Nujol as regularly as you brush your teeth or wash your face. For sale by all druggists.



Sweet Clover to Be Turned Under
 Will Return as Much Nitrogen as Seven Tons of Manure.

Sweet clover as a green manure crop will return as much nitrogen to the soil as seven tons of mixed manure, according to a three-year trial at the Maryland experiment station. Unlike rye or other non-legume crops, this nitrogen will be largely taken from the air and is a free gift to the farmer who is wise enough to make use of it. It will also conserve soil nitrogen that becomes available during the late summer and is wasted where no green crop is grown.

Increasing numbers of farmers are seeding ten pounds of scarified and inoculated sweet clover seed with all their grain. It not only provides green manure but the first year will provide fall pasture and the second year will produce green feed where permanent pastures are brown and of little value. It improves soil conditions on the dairy farm, lowers the cost of producing milk, and increases farm profits at practically the cost of the seed used. With this in mind, why not try a seeding of sweet clover in the last cultivation of corn or with grain next spring.

Suggestions From Maryland.
 Following are some good suggestions from the Maryland station on the seeding and management of sweet clover:

"The soil on which the sweet clover crops were grown was well inoculated for legume. Ten pounds of hulled seed was sufficient to give a satisfactory stand. On land of low fertility and not well inoculated the seeding rate should be at least fifteen pounds of seed per acre. It is important to use only 'scarified' seed, which is hulled seed that has been passed through a machine that scratches the tough outer seed coat. This insures not only prompt but a higher germination of seeds. It is also important that the seed be covered lightly. This is best accomplished by doing the seeding with a disk grass seeder or by harrowing lightly with a smoothing harrow if the seed was distributed by a broadcasting machine.

"Sweet clover, like other legumes, makes its best growth if the proper nitrogen-fixing bacteria are present. On land where alfalfa has been grown it is not necessary to inoculate. Where the crop is planted for the first time, it is quite essential that the seed be inoculated. The inoculation may be accomplished either by the transfer of soil from a field inoculated for alfalfa or sweet clover, or by use of a pure culture. The pure culture is usually to be preferred. Although the sweet clover will grow on land too sour for alfalfa and common clover, the best results are secured on soils which are not acid. This is especially important where the crop is used for soil improvement.

Grazed With Hogs.
 "If the crop is to be used in part for summer pasture, hogs should be turned in for grazing as soon as the wheat is removed. They will consume much of the grain left on the field in addition to the sweet clover. From 600 to 800 pounds live weight of hogs may be grazed per acre without materially injuring the growth and stand of the clover. Cattle will not eat the green sweet clover readily, but will become accustomed to it in a few days.

"Whether the clover is to be in part grazed or all of it allowed to remain on the field until time to turn under for green manure, should be determined from the standpoint of the fertility of the soil and the need for summer grazing. Before plowing, the field should be disked thoroughly. This will cut and macerate the sweet clover plants and hasten their disintegration. The disking will mix soil with the plants and will also improve the plowing condition if the soil is rather dry. A heavy type disk, deeply set, will produce the best results. The plowing and subsequent preparation for fall-planted crops need not be different from the approved practices for fall-seeded grains."

Soy Beans Will Improve Protein Silage Content

Soy beans make an excellent quality of silage and improve the protein content of corn silage. Corn silage contains 1.1 per cent protein while silage made from soy beans contains 2.8 per cent. In 30 lbs. of corn silage there is .33 lb. digestible protein, while in 30 lbs. of soy-bean silage there is .84 lb., or there is a half pound more protein in 30 lbs. of soy bean silage than there is in 30 lbs. of corn silage. In one pound of oil meal there is .33 lb. of digestible protein. If the silage were made entirely from soy beans, the extra amount of protein in 30 lbs., as compared with 30 lbs. of corn silage, would be equivalent to about 1 1/2 lbs. of oil meal.

Community Campaign to Eradicate Chinch Bugs

Wherever the chinch bug was abundant during the past summer, 98 per cent of them will be found hibernating in the bunch grass and bluestem in meadows, pastures, ravines and along roadsides. The burning over of these places will result in the destruction of practically all of the bugs, and when the community co-operates in such a campaign it eliminates the necessity of fighting the chinch bug the following year.

Cattle Lice Are Very Expensive as Boarders
 Coal Tar Dips and Sprays Used With Success.

Why spend money on valuable cattle feed to nourish lice?

During this season of the year, according to Prof. J. W. Bartlett, animal husbandman of the New Jersey Agricultural college, cattle are often affected with lice, young stock being most susceptible, though milk cows are not exempt. The so-called "Blue Louse" is the one commonly found. Being a blood-sucking and not a biting insect, it not only hinders growth and prevents thriftiness, but causes a mange and loss of hair.

At such a time as this it is very expensive to waste any feed, and when one considers the amount of food material that these insects must consume through the blood, it is easily seen how greatly they increase the cost of milk production.

Coal-tar dips and sprays may be used with success, but where there are not too many animals affected, kerosene and lard mixed according to the following formula will serve the purpose.

Mix half pint of kerosene warmed in hot water with one pound of melted lard and apply along the animal's back and neck. If the hair is long the back of the animal should be clipped.

Another means of eradicating lice is by the Kentucky-Black Leaf 40 method. The following formula is recommended:

1 pint Black Leaf 40 to 56 gallons of water, or 1/2 pint Black Leaf 40 to 42 gallons of water, or 1/4 pint Black Leaf 40 to 21 gallons of water.

Apply with brush along back and neck.

Wintering Bees Offers Quite Serious Problem

Bees require very little work and could be profitably kept on many more farms than is now the case. Over the northern half of the continent, however, wintering bees offers quite a problem. Studies made in Wisconsin have divided winter care into three periods, the first extending from September 1 to November 20; the second from November 20 to March 21, and the third from March 21 until May 15.

In the first period make sure that each colony has a queen not more than two years old, whose maximum egg-laying period has not been reached. Provide plenty of stores and allow the bees to make their own brood nest. Feeding should be done before cold nights prevail. Hives must be protected from prevailing winds.

Do not disturb bees during the second period. The cellar should be dark and have a temperature of forty-five to fifty degrees. Excessive ventilation is not desirable.

During the third period the bees are placed outdoors where they are protected from the wind. This is important. Provide every colony with some outside covering as soon as they are placed on their stands. Sufficient stores must be given. Very strong colonies need seventy-five to one hundred pounds of stores in the spring, which the beekeeper must supply if the bees cannot get it in the field. Give forty to fifty pounds as a rule. Plenty of brooding room must be furnished or early swarming is sure to result. You must choose between surplus or increase.

Clipping Stubble Fields for Keeping Down Weeds

Many farmers find clipping oats and wheat stubble a good practice for keeping down weeds. Early clipping prevents the weeds from getting a start and smothering out the young grass and clover and a later clipping will prevent any weeds that are left from going to seed and will tend to thicken the stand of grass.

Such annuals as ragweeds are propagated from the seed alone and if permitted to stand will produce an immense amount of seed which will grow after lying buried in the soil for several years.

It is often found profitable to mow weedy pastures, fence rows and uncultivated orchards to check the growth and spread of weeds.

Water Is of Importance in Production of Eggs

A standard dozen of eggs weighs a pound and a half. About two-thirds of that weight is water. Maybe it is not unfair to say that it takes more water than it does feed to produce a dozen eggs. This much is certain—a flock of hens in good production will stop more quickly if you take away the water than if you take away the feed. A lot of hens do not lay enough eggs simply because they do not get all the water they ought to drink. It takes a lot of it and during cold weather it pays to warm the water to take the chill from it.—Dr. L. E. Card, University of Illinois.

TAKE HYPO-COD AND EAT WHAT YOU WANT

Great Health Builder Being Pushed by Drug Stores for All Sorts of Stomach Trouble.

Many people go through life suffering with stomach trouble that makes their life one of misery. It is unnecessary to suffer this way as thousands are finding out every day. Hypo-Cod, the great health builder, will relieve your stomach troubles and put you in shape to eat when and what you want without suffering with any ill effects afterwards. Mrs. Francis Wheeler of 4611 N. Warnock St., Philadelphia, writes, "I suffered with indigestion,

could not eat, was nervous, and had frightful headaches. I was run down and in very poor health. I was always going to the doctor. For three years I have been taking Hypo-Cod now and then, just as I needed it and have not seen a doctor since I started to take it. My appetite is now fine; my stomach does not trouble me and I do not have my old headaches. I am stronger and better in every way. Hypo-Cod is a wonderful medicine and I would not be without it for the world." If you want to regain your health get a bottle of Hypo-Cod from your drug store today.—Adv.

His Reply.
 "Oh, Gee!" ejaculated Heloise, the waitress of the Rapid-Trip restaurant, who had accidentally spilled the ketchup on the trousers of a customer. "I didn't go to do it. I'm sorry, mister!"

"Aw, that's all right, mon!" courteously answered Sandstorm Smith of Rumpage, who was dining there. "You see, these ain't my other pants."—Country Gentleman.

GIRLS! A GLEAMY MASS OF BEAUTIFUL HAIR
 35-Cent "Danderine" So Improves Lifeless, Neglected Hair.

An abundance of luxuriant hair full of gloss, gleams and life shortly follows a genuine toning up of neglected scalps with dependable "Danderine."
 Falling hair, itching scalp and the dandruff is corrected immediately. Thin, dry, wispy or fading hair is quickly invigorated, taking on new strength, color and youthful beauty. "Danderine" is delightful on the hair; a refreshing, stimulating tonic—not sticky or greasy! Any drug store.—Advertisement.

Like Poison.
 "I hate that chap," quoth the lovely girl, as she rubbed cold cream on her lips.—Washington Sun Dodge.

There is nothing which cannot be accomplished by love.

Sure Relief FOR INDIGESTION

 6 BELLANS Hot water Sure Relief
BELLANS
 25¢ AND 75¢ PACKAGES EVERYWHERE

ARNICA CREAM
 The Best for All Chaps and Shavers
 A Lotion Par Excellence
 Especially recommended for promoting
 A Youthful and Beautiful Complexion
 Superior for Chaps, Sunburn, Tins and Freckles—Healing and soothing to the most delicate skin.
 Delightful after shaving. If not at your druggist, send us his name and we will have you supplied.
 ARNICA CREAM CO., Inc., Box 942, Richmond, Va.



INFLAMED EYES
 Use Dr. Thompson's Eye-water.
 Buy at your Druggist's or
 124 River, Troy, N. Y. Booklet.

Relief for coughs
 Use PISO's—this prescription quickly relieves children and adults.
 A pleasant syrup. No opiates.
 35c and 60c sizes sold everywhere.

GREEN MOUNTAIN ASTHMA COMPOUND
 quickly relieves the distressing paroxysms. Used for 35 years and result of long experience in treatment of throat and lung diseases by Dr. J. H. Guild. **FREE TRIAL BOX**, Treatise on Asthma, its causes, treatment, etc., sent on request. 25c and \$1.00 at druggists. J. H. Guild Co., Box 71, Rupert, Vt.



Drive Malaria Out of the System
BABEK
 for CHILLS & FEVER
 A GOOD TONIC AND APPETIZER
 CONTAINS NO QUININE
 Special Offer: Mail this advertisement with 50 cts. for a full size bottle of the Babek Company, Washington, D. C. "Money back if not satisfied."

KEEPS CHILDREN WELL AND STRONG
Gude's Pepto-Mangan
 Tonic and Blood Enricher

GALLSTONES
 AVOID OPERATIONS BY TAKING GALLTEE FOR GALLSTONE COLIC, CONSTIPATION, STOMACH AND ALL LIVER TROUBLES. WRITE FOR FREE SAMPLE.
THE GALLTEE CO.
 628 ISLAND AVE., MILWAUKEE, WIS.

Two pleasant ways to relieve a cough
 Take your choice and suit your taste. S.B.—or Menthol flavor. A sure relief for coughs, colds and hoarseness. Put one in your mouth at bedtime. Always keep a box on hand.

SMITH BROTHERS
S.B. COUGH DROPS MENTHOL
 Famous since 1847