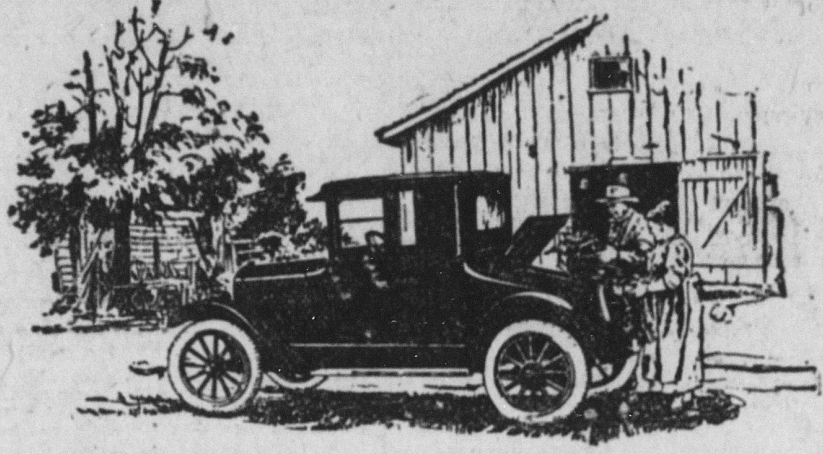


For Economical Transportation



Every Farm Needs Two



EVERY farm needs two automobiles, one of which should be a closed model Chevrolet.

The open touring car is best for general farm use, carrying passengers or perhaps miscellaneous bulky produce or merchandise, but for cold or rainy weather, and for church or social use the family needs a closed car, either a 2-passenger Utility Coupé as illustrated, or the 5-passenger Sedan. The extra large rear compartment is a feature of the Coupé.

These closed cars are very finely made, furnished, upholstered and trimmed. The windows are of plate glass and can be lowered, providing as much air as an open car, yet affording full protection against wind, rain, snow or cold when raised.

With a second car on a farm, one is always available for those at home when the other car is out.

The low prices of Chevrolet make the ownership of two cars feasible for most farm families.

CHEVROLET MOTOR CO., DETROIT, MICH.
Division of General Motors Corporation

Prices Effective September 1, 1923		Five United States manufacturing plants, seven assembly plants and two Canadian plants give us the largest production capacity in the world for high-grade cars and make possible our low prices.	
f. o. b. Flint, Michigan		Dealers and Service Stations Everywhere	
Superior 2-Pass. Roadster	490		
Superior 2-Pass. Touring	495		
Superior 2-Pass. Utility Coupé	640		
Superior 5-Pass. Sedan	795		
Superior Commercial Chassis	395		
Superior Light Delivery	495		
Utility Express Truck Chassis	550		

FIRST U. S. MILITARY MEDAL

Government Gave Gen. George Washington Decoration to Commemorate Evacuation of Boston.

The first military medal ever bestowed by the American government was one in gold to Gen. George Washington, to commemorate the evacuation of Boston by the British in 1776. Capt. Paul Jones was similarly rewarded after his famous fight with the "Serapis" in 1779, and the three men, Parading, Williams and Van Wart, who captured Maj. John Andre in 1780, were given special medals by congress.

The first decoration, and so far as Col. Robert E. Wylie of the general staff of the U. S. A., and author of a work on military and civil orders, decorations and insignia, has been able to discover, which had a general application to enlisted men, was the result of an order issued in 1782 by General Washington. A soldier cited for the decoration was permitted to wear on his facings, over his left breast, the figure of a heart in purple cloth or silk, edged with narrow lace or binding.—Detroit News

Scant.

Nipp—She tries to make a cloak of her religion.
Tuck—Huh! She hasn't enough of it even for a bathing suit.

As a man eateth so is he

THINKING moulds the mind and exercise develops the body, but food supplies the materials for building mind and body.

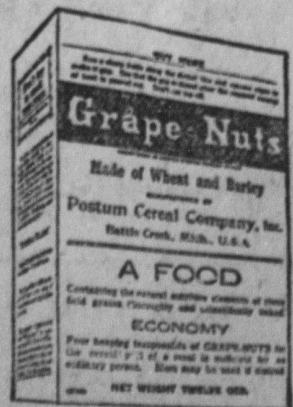
Grape-Nuts, made from wheat and malted barley, is a crisp, delicious cereal food, rich in wholesome nutriment.

The important mineral elements of the grains are readily available in this splendid food. The essential Vitamin-B is supplied in generous measure. The nutritious starches of the wheat and barley are partially pre-digested by 20 hours' baking.

Grape-Nuts with milk or cream is a complete food. Its compact form makes a little go a long way.

Sold by Grocers Everywhere!

Grape-Nuts
—THE BODY BUILDER
"There's a Reason"



Use of Pullets as Breeders Not Wise

Practice Frequently Leads to Use of Immature Birds and Poor Results.

(Prepared by the United States Department of Agriculture.)
The hatching results for the season of 1923 were very poor throughout most parts of the United States. There are doubtless a number of contributing causes and, according to Dr. M. A. Jull, in charge of poultry investigations of the United States Department of Agriculture, one of the causes of poor hatches has been the use from year to year of pullets as breeders.

In a general sense it is apparent that the hatchability of eggs depends upon the constitutional vigor of the breeding stock producing the eggs. If the breeders are healthy and vigorous and are kept in comfortable quarters, then the eggs should hatch well, providing the methods of incubation have been satisfactory. Taking the country as a whole, however, Doctor Jull believes that the hatching results from one season to another are not as good as might be expected.

Pullets as Breeders.
The use of pullets as breeders may affect this situation in the following manner: The practice of using pullets as breeders frequently leads to the use of immature birds. In this way hatching results are affected because the young pullets do not seem to have the abundance of constitutional vigor possessed by older birds. Moreover, all birds as pullets usually lay a smaller egg than as yearlings. Since the size of chick hatched depends to a considerable extent upon the size of the egg producing the chick, it is obvious that, as a rule, larger chicks are produced from the eggs of yearlings. Then again, it has been a matter of common observation among poultrymen that the chicks from yearlings are usually stronger and grow better than the chicks from pullets.

Influence of Feeding.
Another very important matter to which poultrymen should give more attention is the influence of forced feeding on hatchability. Many flocks of pullets are fed heavily throughout the fall and winter to induce heavy egg production, and then in the hatching season the eggs from these pullets are used for incubation purposes. This is a questionable practice, says Doctor Jull, since heavy egg production is a heavy strain upon the stamina of the hen and the eggs from birds that have been fed heavily are very apt to be low in hatching quality. Finally, it would seem that all factors point to the advisability of the use of yearling birds as breeders rather than pullets.

Complete Hurry Periods From April Until Winter

In the growing of such tree fruits as apples, peaches, pears and cherries there are two periods when nothing may be allowed to interfere with the orchard work if there is to be success, says Rural New Yorker. Through April, May and June the various operations of planting, spraying and cultivating must be done at the proper times. Other work may be run in between. Other work may be run in between. Other work may be run in between. Other work may be run in between.

Fight on Tuberculosis Is Progressing Rapidly

Nearly 5,000,000 cattle are under supervision for the eradication of cattle tuberculosis, according to a statement of the status of the work just issued by the United States Department of Agriculture. A total of 681,200 cattle, including both beef and dairy breeds, are in fully accredited herds, while nearly 3,000,000 more have successfully passed the first test in the process of becoming accredited. There is a waiting list of more than 145,000 herds that will be tested as soon as federal and state veterinary inspectors can get to them.

Soy Beans Quite Useful Legume for Any Farmer

Soy beans were grown on over 50,000 farms for the first time in 1922 or the method of cultivation modified, according to reports to the United States Department of Agriculture, through the efforts of co-operative agricultural extension workers to extend the use of this legume as a green manure for increasing soil fertility and a protein supplement for live stock feeding.

Legumes Keep Up Milk Production

Crops Also Increase Soil Fertility.

Dairy farmers are learning more and more each year how much they are dependent upon the legumes. It is a fact that no section is a successful producer of milk, butter and cheese until some of the clovers or allied crops have become abundant. Cows will keep up their milk production during the winter when fed legumes with a small grain ration. Half the amount of grain seems to answer the purpose when the animals are changed from a cheaper roughage to the clover, alfalfa or soy bean hay. These homegrown feeds are a boon to the dairyman and every farmer with a few head of dairy cattle should plan to grow legumes to the fullest extent. Remember that the legumes also increase soil fertility and they supply protein and mineral matter in larger percentage than any other form of roughage.

Tests made at the experimental farms show that the farmer with plenty of soy bean hay, alfalfa or clover in his barns will not have to dig down for so much grain, and still will lose nothing in the way of production. Legumes largely take the place of high-priced concentrates like cottonseed meal and wheat bran, thus lowering the cost of producing milk. Dairy men with silage and legume roughage can go light on grain and be little out of pocket when the milk or cream check arrives.

If legumes are not available this winter, plans should be made to remedy the defect before another winter. Soy beans are being grown almost everywhere with success, clover of some variety will grow on any soil with proper treatment, alfalfa is a more difficult proposition, but its possibilities should be tried out before failure is admitted. Alfalfa has been considered the best of the legumes, but experiments have proved that clover as a part of the ration for dairy cows is fully equal. Clover and alfalfa cannot be made to produce a crop of hay the first year, but soy beans planted in May should yield at least two tons of hay per acre next summer. If clover and alfalfa are not grown on the farm, steps should be taken without delay to remedy the defect. Some soils require liming before the legumes can be successfully grown. There are also many farms, on which a few legumes are grown, but which are all ready to produce these crops abundantly if given the chance.

Proper Feeding During the Time a Cow Is Dry

It is false economy to keep a good cow on dry corn fodder, just because she is dry, and will not freshen for a few weeks, say specialists from the department of dairy husbandry of the state agricultural college.

Proper feeding during the time a cow is dry will have a great effect on her milk flow during the following lactation period. When a cow is carrying a calf and is producing a large quantity of milk, she is under such a tremendous strain that during her rest period she must be fed a ration that will allow her to build her body as well as nourish the calf.

Some cows have a tendency to milk nearly up to the date of freshening, and it is often a belief that they cannot be dried off for a sufficient rest period. Expert herdsmen, however, find that no injury results from drying up a cow which gives as much as five to eight quarts daily, if one milking a day is omitted for several days and the animal then partly milked out after skipping an entire day.

Equal parts by weight of hominy, oil meal, bran and ground oats make a good ration for a dry cow. The cow should receive enough of this ration to keep her constantly gaining in flesh until calving time. Just before she freshens, it may be necessary to feed oil meal and bran only. If the udder shows inflammation, feed bran alone for a week before calving time.

Partnership Bulls Will Make Profitable Return

Herd sires owned co-operatively do not tend to spread contagious abortion, as is sometimes supposed, say the animal men at the New York State College of Agriculture at Ithaca. In many parts of New York two or three men who live near together and think alike about the proper breed and handling of herd sires have bought them together and bettered their herds at comparatively small expense. Many New York farmers have bought co-operatively, say the college workers. Bulls bought in this way have proved better herd sires than individual farmers could have gotten in any other way, and each farmer has paid less than the cost of an inferior animal. The result has been bigger milk checks and more valuable herds.

Formaldehyde Treatment for Smutty Wheat Seed

Wheat seed which has smut should be treated after it has been carefully fanned, using the formaldehyde-sprinkling method. This consists of mixing one pint of full strength formaldehyde with 40 gallons of water for treating 50 bushels of wheat. The solution is applied by means of a sprinkling can. The seed is covered over night, after which it is ready for planting. Treated seed should not be planted in dry soil. The rate of planting should be increased about one-half peck to the acre.

Internal cleanliness protects against disease

It is but a step from those immediate results of constipation—headache, heaviness, loss of appetite—to serious disease. Such minor ailments are a warning that poisons from food waste are flooding your body. Keep clean internally.

In constipation, say intestinal specialists, lies the primary cause of more than three-quarters of all illness including the gravest diseases of life.



Your bath goes only skin-deep.

Laxatives Aggravate Constipation

Laxatives and cathartics do not overcome constipation, says a noted authority, but by their continued use tend only to aggravate the condition and often lead to permanent injury.

Medical science, through knowledge of the intestinal tract gained by X-ray observation, has found at last in lubrication a means of overcoming constipation. The gentle lubricant, Nujol, penetrates and softens the hard food waste and thus hastens its passage out of the body. Thus Nujol brings internal cleanliness.

Nujol is not a laxative and cannot gripe. Nujol is used in leading hospitals and is prescribed by physicians throughout the world.

Don't give disease a start. Adopt this habit of internal cleanliness. Nujol is not a medicine. Like pure water, it is harmless. Take Nujol as regularly as you brush your teeth or wash your face. For sale by all druggists.



Nujol
REG. U. S. PAT. OFF.
For Internal Cleanliness

HE HAD NO APPETITE WAS ALL RUN DOWN

Norfolk Man Found Nothing To Help Him Until He Took Earle's Hypo-Cod

Mr. Clinton Williams of 1403 Ann St., Norfolk, Va., writes, "I had been feeling miserable for some time and had taken a great many different kinds of medicine, and nothing seemed to do me any good. I had no appetite, had frightful headaches and was subject to dizzy spells. In the morning I would get up feeling sluggish and after every meal, my stomach would give me a lot of trouble. I was losing weight and strength and feeling worse every day. One day my niece told me to get Hypo-Cod as she knew it would straighten me out. After taking one bottle I felt so much better

that I got another bottle and after taking it I find myself in better health than I have been in for years. All my headaches have disappeared and I do not know what it is to have a dizzy spell any more. My appetite is fine and I have increased four pounds in weight and an still gaining. I can now sleep and wake up rested and refreshed in the morning. I am in better all around health than I have been in for years." Hypo-Cod is easy and pleasant to take and has a most delightful wingle-like flavor. If you are run-down and weak and in ill health, get a bottle of Hypo-Cod today from your druggist or send \$1 to The Earle Chemical Co., of Wheeling, W. Va., for a full sized bottle to be sent you prepaid.—Advertisement

Time is Merciless. "Time is ungracious." "Howzat?" "It tells on a woman."

GIRLS! HAIR GROWS THICK AND BEAUTIFUL

35-Cent "Danderine" Does Wonders for Lifeless, Neglected Hair.



A gleamy mass of luxuriant hair full of gloss, luster and life shortly follows a genuine tonic up of neglected scalps with dependable "Danderine." Falling hair, itching scalp and the dandruff is corrected immediately. Thin, dry, wispy or falling hair is quickly invigorated, taking on new strength, color and youthful beauty. "Danderine" is delightful on the hair: a refreshing, stimulating tonic—not sticky or greasy! Any drug store.—Advertisement

Their Secret.

Family Physician—I'm afraid you've been eating too much cake and candy. Let me see your tongue. Little Bess (perkily)—Oh, you can look at it, but it won't tell.

Cuticura for Sore Hands.

Soak hands on retiring in the hot suds of Cuticura Soap, dry and rub in Cuticura Ointment. Remove surplus Ointment with tissue paper. This is only one of the things Cuticura will do for Soap, Ointment and Talcum are used for all toilet purposes.—Advertisement

No one pursues brains as he does the acquisition of wealth, because it is futile.



Two pleasant ways to relieve a cough

Take your choice and suit your taste. S-B— or Menthol flavor. A sure relief for coughs, colds and hoarseness. Put one in your mouth at bedtime. Always keep a box on hand.



SMITH BROTHERS
S.B. COUGH DROPS MENTHOL
Famous since 1847

Take It at Night Makes Day's Work Light



St. Joseph's LIVER REGULATOR for BLOOD-LIVER-KIDNEYS The BIG 25¢ CAN

GREEN MOUNTAIN ASTHMA COMPOUND

quickly relieves the distressing paroxysms. Used for 25 years and result of long experience in treatment of throat and lung disease by Dr. J. H. Guild, FREE TRIAL BOX, Treatise on Asthma, its causes, treatment, etc., sent on request. 5c and \$1.00 at druggists. J. H. Guild Co., Box 71, Rensselaer, N. Y.