

DOCTORS WANTED TO OPERATE

Mrs. Quillon Tells How Lydia E. Pinkham's Vegetable Compound Saved Her from an Operation

Muskegon, Michigan.—"After doctoring for eight or nine years with different physicians without any relief at all, they said that medicine would not reach my case and I should have an operation. I had heard of Lydia E. Pinkham's Vegetable Compound and often saw it advertised in different papers where some women had suffered just as I did and got well and strong again by taking the Vegetable Compound. I decided to see what it would do for me, and before I had finished the fourth bottle I was much better, the weakness stopped and the severe pains in my sides left me. I am now much stronger and do my own work and work in the factory besides. I am still taking the Vegetable Compound and give it all the praise."—Mrs. NELLIE QUILLON, 17 Morris St., Muskegon, Mich.

Women should heed such warning symptoms as bearing-down pains and weakness, for they indicate some female trouble, and a persistent and faithful use of Lydia E. Pinkham's Vegetable Compound will seldom fail to help.

Assuredly. "Did any of your family ever make a brilliant marriage?" "Only my wife."

GIRLS! HAIR GROWS THICK AND BEAUTIFUL

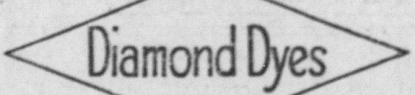
35-Cent "Danderine" Does Wonders for Lifeless, Neglected Hair.

A gleamy mass of luxuriant hair full of gloss, luster and life shortly follows a genuine toning up of neglected scalps with dependable "Danderine." Falling hair, itching scalp and the dandruff is corrected immediately. Thin, dry, wispy or fading hair is quickly invigorated, taking on new strength, color and youthful beauty. "Danderine" is delightful on the hair; a refreshing, stimulating tonic—not sticky or greasy! Any drug store.—Advertisement.

Anyway, the obese female who has outgrown the corset habit looks comfortable.

WOMEN! DYE FADED THINGS NEW AGAIN

Dye or Tint Any Worn, Shabby Garment or Drapery.



Each 15-cent package of "Diamond Dyes" contains directions so simple that any woman can dye or tint any old, worn, faded thing new, even if she has never dyed before. Choose any color at drug store.—Advertisement.

Most of the unrecognized believe that they are casting pearls before swine.

Wright's Indian Vegetable Pills are not only a purgative. They exert a tonic action on the digestion. Test them yourself now. 272 Pearl St., N. Y. Adv.

Leisure is the few minutes' rest a man gets while his wife is hunting up something else for him to do.

Work is the easiest of all ways to kill time.

BACK ACHY?

Lame and achy in the morning? Tortured with backache all day long? No wonder you feel worn out and discouraged! But have you given any thought to your kidneys? Weak kidneys cause just such troubles; and you are likely to have headaches, too, with dizziness, stinging pains and bladder irregularities. Don't risk neglect! Use Doan's Kidney Pills. Doan's have helped thousands. They should help you. Ask your neighbor!

A Virginia Case
Mrs. E. H. Brown, 506 S. Alfred St., Alexandria, Va., says: "Sharp pains cut through my back. I was troubled with headaches that nearly drove me crazy. My kidneys were in a terrible condition and their action was irregular. I bought a box of Doan's Kidney Pills and better and finally, I was relieved."

Get Doan's at Any Store, 60c a Box
DOAN'S KIDNEY PILLS
FOSTER-MILBURN CO., BUFFALO, N. Y.
CURES COLDS - LA GRIPE
in 24 Hours
CASCARA QUININE
Standard cold remedy world over. Demand box bearing Mr. Hill's portrait and signature.
At All Druggists—30 Cents

Community Building

IMPROVE CEMENT MIXTURE

Samples Tested in the Hope of Obtaining Better Results in Concrete Construction.

Chicago has what may be termed a "sand library." In a series of glass covered cabinets in the structural material research laboratory at Lewis Institute are rows after rows of little glass bottles filled with sand that have been brought to Chicago from various corners of the world to be tested in the institute in the hope of producing what engineers might regard as an ideal concrete mixture.

It is probably the only collection of its kind in existence, and the information contained on the labels of the bottles gives an interesting insight into the part that science is playing in modern undertakings.

This "sand library" was started ten years ago and specimens have been added from time to time until there are more than 2,500 different bottles of sand in the collection. The specimens come from every state in the Union and from Canada, Cuba, Mexico and other foreign countries.

Each sample has been carefully tested and the results of the test are kept in the files. They include the source of the specimen, the grading, silt content and the results of the colorimetric test for organic impurities. In most instances mortar and concrete tests also have been made.

The experiments with the various sands were undertaken at the laboratory as a part of the work of ascertaining methods that will assist the concrete user in obtaining the best results in the use of the material.

PLANS CITY SMOKE SURVEY

Investigation Will Show the Conditions Existing in Industrial Centers.

The smoke investigation begun by the Mellon Institute of Industrial Research of the University of Pittsburgh in 1912, and temporarily concluded in 1914, will be resumed immediately under the direction of Dr. Harry B. Meller, who has resigned as dean of the School of Mines to take up the work.

Systematic surveys of smoke conditions in Pittsburgh, Chicago, Cleveland and other industrial cities will be carried on. They will be made up of comparative analysis, smoke, dust and soot contaminations; research into the manufacture of "smokeless" fuel by especially low temperature carbonization of bituminous coal, and investigation of physical means of abating the smoke nuisance, with particular reference to electrostatic precipitation of smoke.

The survey work has been started with the installation and operation of apparatus for the determination of the smoke content of the air. This phase of the investigation will be continued for a considerable period in a number of cities at the same time. Bulletins will be issued to inform the public.

Women Clean Up a Town.

Armed with red pepper and clubs, the married women of Hamtramck, a suburb of Detroit, Mich., are making the town safe for men and boys. They are waging war on certain questionable resorts which have been unannounced by police.

In the first encounter—a raid on a poolroom—the women were defeated. Their leaders were arrested and jailed. Later they were released, however, and now new campaigns are awaiting execution.

Trees and the Birds.

A birdless land is a crooked land and a treeless land is a birdless land. Every bird shot or deprived of shelter for rearing young means a decrease in the army of defense against the insects which already damage our crops to the amount of \$420,000,000 a year. Private ownership, civic pride, love of beauty, public hygiene and financial prosperity call for protection of trees and the birds they shelter.—Nature Magazine.

Placing of Trees.

Street trees may be placed from 30 to 80 feet apart, depending upon the variety, says the American Tree association of Washington, D. C. Catalpa and Lombardy poplars, which are not very commendable for street use, may be planted at the minimum distance given above, while sycamore and elm require the maximum distance. Additional suggestions for full tree planting will be sent you for a two-cent stamp.

Pines in Right Place.

They are nice for lawns and parks, or other open places, but the pines and trees classified as confers have no place in street planting, says the American Tree association of Washington, D. C. In urging tree planting, their winter shade is undesirable. They do not yield readily to pruning.

A Pleasant Town.

One of the pleasantest towns to live in is one just big enough to call out the brass band when the governor visits it.

Training Shipper to Grade and Pack

Much Waste and Loss of Fruits and Vegetables Can Be Prevented.

(Prepared by the United States Department of Agriculture.)

Waste and loss in fruits and vegetables due to spoilage or breakage in transit have been one of the serious problems connected with the profitable production and selling of perishable foods.

The market specialists of the bureau of agricultural economics of the United States Department of Agriculture have long urged growers to take steps to prevent this unnecessary waste, which brings them no profit and often means a serious loss, at the same time reducing the total supply of fruits and vegetables. Increased care in selecting, grading, packing and shipping their products has accomplished much in spite of the risks involved in shipping perishables over long distances, across deserts, mountains and plains in all kinds of weather.

Tomatoes All Year.

Tomatoes are now found on the large markets practically all the year, coming from Mexico, Cuba, and the Bahamas in early winter, from Florida and south Texas next, and from east Texas, Mississippi and Tennessee during the spring. Ohio, Illinois and New Jersey supply the summer trade of the large eastern markets until local growers and home gardeners can fill the demand. California ships tomatoes from May to November. In order to avoid high freight charges on tomatoes which will spoil in transit, very careful grading and packing must be done by the shippers. Both consumer and grower reap the benefit of this care preceding shipment.

Losses and waste in handling poorly graded cabbage are quite frequent. The shippers lose by their own negligence and the consumer loses because of the lessened supply, poor quality and higher local prices. Growers are being systematically urged not to ship over-ripe, decayed and soft heads of cabbage.

Grade All Products.

The large associations of potato growers have succeeded in grading their products under brand names which protect the customer against oversized, hollow and defective tubers. Boxed apples from the Northwest leave that region splendidly graded, although at times they suffer unavoidably in transit to eastern markets. California growers are making vigorous efforts to put only standardized cantaloupes, citrus fruits and other products on the market, to avoid shipping either green or overripe melons and to enforce such rigid grading, packing and shipping rules that only those oranges, grapefruit and lemons which will surely withstand travel and changes in climate, are now being shipped.

The list might be indefinitely continued. Every effort is being made by the United States Department of Agriculture to influence growers to grade their products and pack them properly for shipment, enabling the housekeeper, who is the final purchaser of California's cantaloupes, Florida's tomatoes, or Oregon's apples, to obtain her money's worth when she deals with the retail storekeeper.

Fowls Appreciate Good Feed of Grain at Night

A hen consumes approximately four ounces of food a day, and poultry authorities at Minnesota University farm find she will eat two ounces of this in the form of dry mash when it is available. These ground grains are quickly digested, and the fowl is saved the trouble of grinding all the feed in her crop. Thus by feeding dry mash production can be forced.

The other two ounces of feed, says the poultrymen, should be in the form of whole or cracked grains, fed twice a day in a deep, clean litter, giving a little less than an ounce in the morning and a little more than an ounce at night. The hen's crop is small and the winter nights are long, consequently the heavier feeding should be given at night. Care should be taken always that the fowls go on the roosts with full crops.

Why Doesn't Farmer Put Implements Under Cover?

Ask a farmer why he doesn't put the farm implements in the shed instead of leaving them just where he unhooked. He may answer, "What's the use? The parts that will rust out are covered with oil, and those that aren't covered with oil last longer than the rest of the machine anyhow."

The implement dealer knows that if the machinery is not housed he will sell two machines where he should have sold only one, and that he will also sell more repairs.

With both the farmer and the implement dealer satisfied, why house the farm machinery?

Sunflowers for Silage Should Be Cut Promptly

Sunflowers for silage should be cut in when the seeds reach the hard dough stage. When grown on wet land so the pith is sappy and full of water, they may be cut and wilted in the field before putting into the silo. When grown on very dry ground, they should be put into the silo as promptly as possible and enough water added that a little can be squeezed from the cut stalks.

Arrangement for Hog Feeding Quite Handy

Originated and Used at Illinois Experiment Station.

A handy arrangement for feeding hogs originated and used at the Illinois agricultural experiment station farm is shown herewith. It consists of a concrete feeding floor 12 feet wide and 14 feet long and two concrete troughs each 12 feet long made separate from the floor. At the outside corners of the troughs four posts are set in the concrete floor. To these are spiked 2 by 8-inch pieces which support panels which can be swung over the troughs. This feature enables the herdsman to keep the hogs away from the trough while it is being filled. A strap iron fixture holds the panel in the position desired.

One of the easiest improvements for the hog raiser to build is a concrete feeding floor; and it will bring him quicker and larger returns for the money invested than any other part of his hog raising equipment. Loss of valuable feed is prevented when hogs are fed on a concrete floor.

Considerable time and labor will be saved if the feeding floor is located near the corncrib or granary. It is desirable to place the feeding floor on the south or east side of the corncrib or hoghouse, as it will then be largely protected from cold winds. The location selected should be well drained.

Where the ground is firm and well drained, concrete may be laid directly



Handy Arrangement for Hogs.

upon the soil after all grass, roots and other perishable matter have been removed and the area brought to proper level and firmly compacted.

Concrete feeding floors should be made not less than four inches thick. What is known as one-course construction, which means the same mixture of concrete throughout, should be used. The mixture should be a 1-2-3, which means one sack of portland cement to two cubic feet of clean, well-graded sand, to three cubic feet of clean pebbles or broken stone not to exceed 1 1/2 inches in diameter. Two-inch lumber should be set up for forms and firmly staked to line and grade.

The floor should be sloped in at least one direction so it will drain quickly after rains. Sunshine and rain will help keep the surface clean. A slope of one-quarter inch to the foot will be enough.

Much Butter Being Made on a Household Scale

Farmers and their wives residing on the approximately 4,500,000 farms, where at least one cow is kept on each, continue the practice of making butter on a household scale, despite the growth of modern creameries to the extent of 3,885 in number in 1922. For the purpose of making butter on the farm—13,125,000,000 pounds of whole milk were utilized last year and 625,000,000 pounds of this product was manufactured. Thus nearly 40 per cent of the total butter production of the United States is made on approximately one-half of the farms of the country.

Barberry Bush Harbors Black Stem Wheat Rust

Thousands of people throughout the Middle West have learned during the past years, at the various county and state affairs, to recognize the common barberry bush, which harbors the black-stem rust of wheat. The demonstrations at the fairs have created considerable interest among wheat growers and they have expressed themselves as being anxious to co-operate in the campaign to eliminate the barberry bush in order to minimize the losses from black-stem rust of wheat.

Sunflower Is Excellent Silage Feed for Cattle

The sunflower makes excellent feed as silage, and data at present available indicates that silage made from the sunflower, if put up at the proper stage of maturity, makes a fairly good substitute for corn, although its feeding value is not so high. It has been used mostly in areas where the chinch bug is prevalent. The crop fits well in many rotations where corn should be omitted on account of chinch bug damage.

Successful Planting of Raspberry Bush in Fall

As a rule, spring planting is best for raspberries, but if the fall should be favored with enough rainfall so that the young plants could get a good start, fall planting will be successful, and you will gain a season by planting early this fall, because there will be some fruit, while with spring planting, you could not hope to gather fruit next year, as you might with fall planting.

THIN BLOOD WEAK AND ALL RUN DOWN

Norfolk Woman Recovers Her Health After She Takes Earle's Hypo-Cod

Mrs. F. E. Lawless, of 1111 Holt St., Norfolk, Va., is more than grateful for the results obtained by taking Hypo-Cod. She writes as follows: "For years I suffered with thin blood and when my beautiful boy twins were born about a year ago I knew that I would have to take a powerful up-building tonic, and nerve restorer. I was subject to dizzy spells, and suffered with chronic constipation, which distressed and depressed me to the point of despair. One day a friend told me about Hypo-Cod and what it was doing for those who were taking it. I decided to get a bottle, and give it a trial. I cannot begin to tell

you how glad I am that I started taking this great health builder. My dizzy spells have all disappeared and I do not know what it is any more to suffer with constipation. The wonderful improvement in my health has greatly comforted my husband, and has been a source of pleasant surprise to my friends. I am always boasting Hypo-Cod, telling what it has done for me." More people every day are learning of this great tonic and health builder, and if you who read this are weak, thin, pale or suffer with indigestion, liver trouble, or nervousness we urge you to get a bottle from your druggist, and start taking it. Or, a full size bottle will be sent you prepaid by the Earle Chemical Co., of Wheeling, W. Va., upon receipt of One Dollar (\$1.00).—Advertisement.

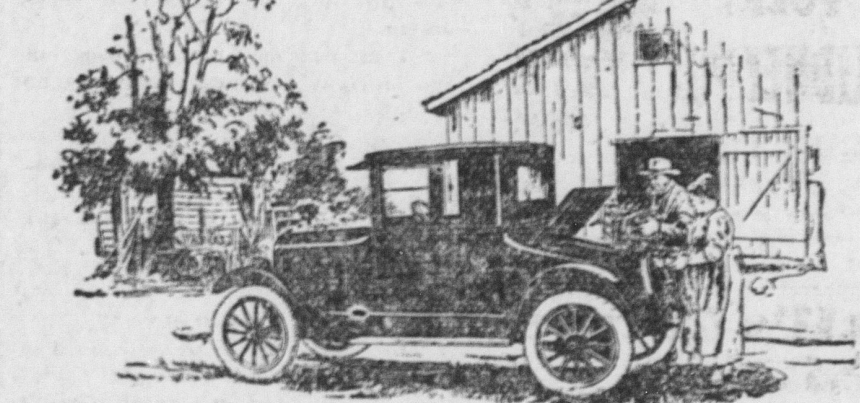
Pardon. Lawyer—What is the name of the man who struck you? Witness—Pardon. "I said, 'What is his name?'"

"Pardon." "Pardon me, but don't you know his name?" "Pardon me, I do! It's Pardon."—London Tit-Bits.

For Economical Transportation



Every Farm Needs Two



EVERY farm needs two automobiles, one of which should be a closed model Chevrolet. The open touring car is best for general farm use, carrying passengers or perhaps miscellaneous bulky produce or merchandise, but for cold or rainy weather, and for church or social use the family needs a closed car, either a 2-passenger Utility Coupe as illustrated, or the 5-passenger Sedan. The extra large rear compartment is a feature of the Coupe. These closed cars are very finely made, furnished, upholstered and trimmed. The windows are of plate glass and can be lowered, providing as much air as an open car, yet affording full protection against wind, rain, snow or cold when raised. With a second car on a farm, one is always available for those at home when the other car is out. The low prices of Chevrolet make the ownership of two cars feasible for most farm families.

CHEVROLET MOTOR CO., DETROIT, MICH. Division of General Motors Corporation

Prices Effective September 1, 1923
J. O. B. Flint, Michigan

Superior 2-Pass. Roadster	\$490
Superior 5-Pass. Touring	495
Superior 2-Pass. Utility Coupe	465
Superior 5-Pass. Sedan	795
Superior Commercial Chassis	395
Superior Light Delivery	495
Utility Express Truck Chassis	550

Five United States manufacturing plants, seven assembly plants and two Canadian plants give us the largest production capacity in the world for high-grade cars and make possible our low prices. Dealers and Service Stations Everywhere.

MEXICO—We furnish capable, reliable information covering conditions and opportunities here. Blank and Commercial References. Free ERM, returned if inconvenient or impossible furnish information. Universal Information and Service Company, Balderas St., Mexico City, Mexico.

Fertile With from \$500 to \$2,000 ahead communicate with me. Bonafide proposition from \$1,000 to \$2,000 monthly can be derived from said investment. Investigate. S. H. Baker, 1113 Madison Ave., Covington, Ky.

Chow. "Do you like Pung Chow?" "I don't know that I ever ate any of that chow."

BATHE YOUR EYES Use Dr. Thompson's Eye Drops. Buy at your druggist's or 106 River View N. Booklet. Prefers a Mute. "I give my preference to a mute over a boss," said Uncle Eben. "What-ever a mule's faults may be he never gets out on a race track an' tempts you to bet on him."

Genuine BAYER ASPIRIN

SAY "BAYER" when you buy. Insist! Proved safe by millions and prescribed by physicians for Colds, Headache, Neuritis, Lumbago, Pain, Toothache, Neuralgia, Rheumatism.

Accept only "Bayer" package which contains proper directions. Handy "Bayer" boxes of 12 tablets—Also bottles of 24 and 100—Druggists. Aspirin is the trade mark of Bayer Manufacture of Monocetate of Salicylic Acid

Two pleasant ways to relieve a cough

Take your choice and suit your taste. S-B or Menthol flavor. A sure relief for coughs, colds and hoarseness. Put one in your mouth at bedtime. Always keep a box on hand.

SMITH BROTHERS S.B. COUGH DROPS MENTHOL Famous since 1847