

WRIGLEYS

After Every Meal

Have a packet in your pocket for ever-ready refreshment.

Aids digestion. Allays thirst. Soothes the throat.

For Quality, Flavor and the Sealed Package, get



WRIGLEYS SPEARMINT GUM

THE PERFECT GUM


THE FLAVOR LASTS

TYPEWRITERS

Remingtons, L. C. Smiths, Oliviers, Royals, Underwoods, etc. Used and **REBUILT MACHINES**

We recently purchased a large number of typewriters from the U. S. Government and offer them much below the regular prices. WRITE US, stating make of the machine you desire, and we will send you prices and particulars. Special attention to out-of-town customers.

HOWARD BOYER COMPANY
104 W. Fayette St. Baltimore, Md.



Clear Your Complexion with This Old Reliable Remedy—

HANCOCK SULPHUR COMPOUND

For pimples, black-heads, freckles, blotches, and tan as well as for more serious face, scalp and body eruptions, hives, eczema, etc., use this scientific compound of sulphur. As a lotion, it soothes and heals; taken internally—a few drops in a glass of water—it gets at the root of the trouble and purifies the blood.

Physicians agree that sulphur is one of the most effective blood purifiers known. Remember, a good complexion isn't skin deep—it's health deep.

Be sure to ask for **HANCOCK SULPHUR COMPOUND**. It has been used with satisfactory results over 25 years.

60c and \$1.20 the bottle at your druggist's. If he can't supply you, send his name and the price in stamps and we will send you a bottle direct.

HANCOCK LIQUID SULPHUR COMPANY
Baltimore, Md.

Hancock Sulphur Compound Ointment—same as the one for use with the Liquid Compound.

Shave With Cuticura Soap The New Way Without Mug

RATHER SPOILED THE EFFECT

Unfortunate That Proud Driver of Car Should Have Forgotten to Remove That Pail.

They were talking about embarrassing moments at the Friday Morning club when one fair matron remarked: "While living in a small western town a few years ago, my husband purchased an automobile. Upon inspecting our garage I discovered a leak in the roof and, to save the new machine from a possible drenching, I placed a five-gallon pail on top of it. "Several days later I noticed, unaware that the pail was still on top of the car, and it surely was my most embarrassing moment when I parked near a dairy and a kind stranger offered to take the milk pail down for me."

Feeling Was Mutual.

Billie has been a naughty boy and upon rising in the morning his mother said, "Now, Billie, you were a bad boy yesterday and I hope you will be better today. Yesterday nobody liked you."

"That's all right, mother," said Billie; "yesterday I didn't like myself."

And After That!

Tourist—Is this a quiet place?
Fisherman—It was until people started coming here to find quiet.

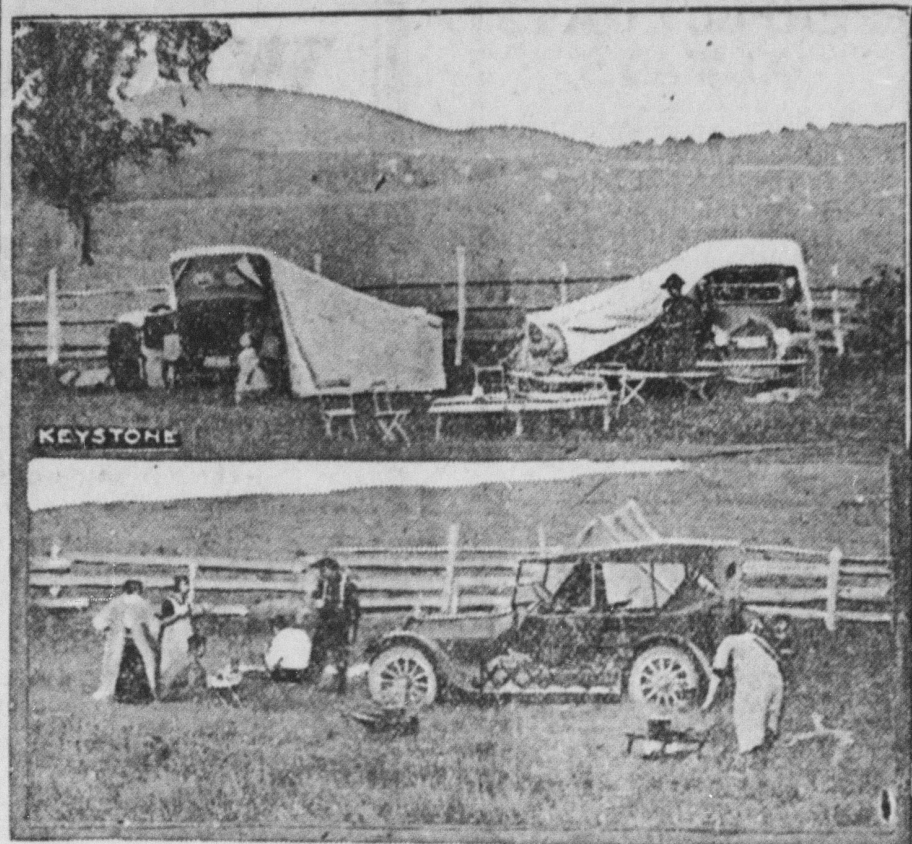
Wishing for sleep is a poor way to get it.

Try **Postum** instead of coffee.

There's a Reason

iced Postum is delicious

REAL JOYS OF LIVING IN COUNTRY



When the sun begins to cast its rays right into your innermost bones, then is the time to pack up, take the bus and family, and shoot away to some quiet country place for a few days to taste the real joys of living. Here is a camping squad of autos and they all seem to be enjoying themselves while dinner is being prepared.

DISK CLUTCH IS EASY IN ACTION

Mechanism of Unusual Qualities and Unit of Almost 100 Per Cent Perfection.

(By ERWIN GREER, President Greer College of Automotive Engineering, Chicago.)

The disk clutch is a mechanism of unusual qualities. Simple, easy to operate, efficient and lasting. In view of the severe work which it has to perform and the excellent manner in which it does it, without attention, makes it a unit of almost 100 per cent perfection. There are times, however, when one of these clutches after a period will begin to slip. This slipping condition will usually develop after the first two or three months' service if it is going to slip at all, and I am now going to try to make it clear, the reason of this and how to overcome it.

This clutch of the dry disk type is made up of a number of disks arranged alternately with a steel plate against one fabric lined. The edges of the fabric-lined disks have a series of teeth cut around the outer diameter which mesh with corresponding grooves in the outer drum. The steel disks have keysways out in the edge of holes in the disks which engage in keys in the internal drum. When the clutch is engaged these disks are firmly compressed by two springs acting against the compressor plate.

Height of Disks.

The height of the total number of disks piled one on top of the other and arranged the same as when in the clutch should equal or be slightly in excess of the distance from the shoulder to the edge of the internal clutch drum. When a car is new the lined disks are bound to have high spots on them and after a few hundred miles' running these high spots will be worn down, resulting in a reduction in the measure of the disk assembly. When the reduction is sufficient to make the measurement of the disk assembly less than the measurement from the shoulder to the edge of the drum, then the compressor plate will strike the edge of the drum and the pressure of the springs will be against the drum instead of the disks, resulting in a slipping clutch.

To Correct Slipping.

To correct this slipping condition the only thing necessary is to add something to the disk assembly in order to increase the measure of the disk assembly. This can be done by installing one extra disk and the best place to put it is against the shoulder of the drum. One disk is usually sufficient to make up the required amount. Do not put too many disks in as there would be a possibility of the clutch not releasing properly. Very often when one of these clutches starts to slip the owner will pour gasoline on it or tighten the springs. This usually does not help much as in most cases slipping is caused by the condition just given.

Slipping of the clutch is also caused by improper pedal adjustment. The clutch pedal at all times should have a slight amount of play so that there is no doubt that the clutch is being held out by the pedal stop.

Do not pour oil in the clutch housing as it will damage the clutch lining, making it too soft. Keep the thrust bearing greased.

Headlight Follows Wheels.

Lamps Controlled by Steering Mechanism in Such Manner That They Turn With Wheels.

In illustrating and describing an automobile headlight, the invention of R. L. Rice and W. M. Jordan of Hovey, Miss., the Scientific American says: "This invention relates to headlights for automobiles or similar vehicles, and has for its object to provide means wherein the headlights are controlled by the steering mechanism in such manner that they turn with the steering wheels of the vehicle whereby the road is illuminated even on the sharp curves. Further objects are to provide means by which the lights may be controlled to remain stationary, or may be removed and used as a spotlight enabling the driver to readily carry out repairs."

EASIEST METHOD TO GET AT COMMUTATOR

Task Is Simplified by Use of Thin Wooden Paddle.

It is difficult to get at commutators as a rule, due to the small opening at the commutator end of a generator or starting motor. This requires that some simple tool be made to get at the commutator through one of the brush holder openings. The easiest way to do this is to take the cover of a cigar box or some thin wood stock and make a small paddle about 4 or 6 inches long and about half the width of the brush holder.

To use this simple arrangement for cleaning generator commutators first remove the most accessible generator brush and then wrap a strip of No. 00 sandpaper over the end of the paddle and use it through the brush holder when the engine is running as one would use a hand lathe tool. This will thoroughly clean the commutator and do it evenly. Under no circumstances use emery cloth or electrical cloth, as emery is a conductor and will short the commutator. Shorted armature windings on most machines will make themselves known by turning the segments of the armature a blue color. One shorted winding will make two segments 180 degrees apart or one-half way around the commutator change color.

A dirty motor commutator causes arcing and heating. This is also true if the contact faces of the brushes are cut and not smooth. If this condition is found, it is best to smooth the faces of the brushes, as they will cut the commutator so badly in a short time that it will have to be replaced by taking a cut off of it in a lathe.

HEADLIGHT FOLLOWS BENDS



Headlights Follow Wheels.

by the steering mechanism in such manner that they turn with the steering wheels of the vehicle whereby the road is illuminated even on the sharp curves. Further objects are to provide means by which the lights may be controlled to remain stationary, or may be removed and used as a spotlight enabling the driver to readily carry out repairs.

AUTOMOBILE PAINTS

The pan under the engine is a unit which is capable of making considerable noise if it is not properly fitted and rigidly secured in position.

One of the most common complaints among car owners is the improper action of the clutch. The clutch throwing collar needs constant lubrication.

A handy screwdriver can be made from a shoe buttonhook by cutting off the hook end, then flattening this and shaping it to fit the heads of small screws.

Sterilizing Cans Is Big Necessity

Great Care Must Be Taken to Prevent Spoilage and Insure Good Milk.

(Prepared by the United States Department of Agriculture.)

If bacteria were large enough to be visible to the naked eye, and still retained their remarkable powers of increasing their multiplication in an unsterilized milk can on a warm summer day would probably produce an effect much like an explosion. Under favorable conditions the increase in numbers in 24 hours, even on the walls of an empty can, is almost beyond belief. These large numbers of microorganisms hasten the souring of milk put into the cans.

Attention to Cans Needed.

To prevent loss through spoilage and to insure a wholesome product on the consumer's table, it is absolutely necessary to give attention to sterilizing cans, particularly during the hot months. Mere washing and rinsing will not do, especially if several utensils are washed and rinsed in the same water, as several million bacteria usually will be left in a can. The millions soon increase to billions, and when milk is put into the cans it is inoculated with the organisms present.

Some recent experiments by the department have brought out figures which should add weight to the contention that regular daily sterilization of cans means much in getting milk on the market in good condition. Cans were washed and rinsed, and bacteria counts were made on them both before and after sterilization, and on similar cans which were held for 24 and 48 hours. The lids were kept on the cans, which were left under conditions much the same as those encountered during shipment to market.

Good of Sterilization.

In estimating the number of bacteria in the cans, they were rinsed once with about a pint of sterile water. The work was done with four 10-gallon cans. In one unsterilized can soon after washing 47,000,000 bacteria were found, while the count for a similar can after sterilization was only 3,000 bacteria. Another unsterilized can was held for 24 hours under conditions similar to those encountered in shipment and hauling, and it then yielded 10,000,000,000 bacteria at the first rinsing. A can which had been sterilized and dried and held for the same length of time contained only 16,500. The unsterilized can held 24 hours contained enough bacteria to contaminate ten gallons of milk with 300,000 organisms for each cubic centimeter.

There are about 16 drops in a cubic centimeter of milk. A well-sterilized can would contribute only about one organism to each cubic centimeter of milk. It is not difficult to see what an advantage the can containing each cubic centimeter of milk with only one bacterium would have over the one where the milk is contaminated at the start with 400,000 bacteria per cubic centimeter.

Cut Sudan Grass When It Begins to Head Out

The most profitable time to cut sudan grass is between the time it begins to head until it is fully headed out. There is little loss, however, when the grass is allowed to grow until the seed has reached the soft dough stage, only one cutting being then required to harvest the crop and obtain the maximum yield of forage. When cut earlier more than one cutting may be obtained but the yield per cutting will not be so large. There are few grasses that are injured so little by standing beyond the proper stage of maturity as sudan grass. This is due to the numerous tillers, which, arising from the base, mature successively and provide immature stalks throughout the season.

Manure Most Profitable When Applied to Wheat

In the rotation of corn, oats, wheat, and clover, the one commonly used at the Ohio experiment station, it has been found that over a period of eight years manure has proved most profitable when applied to the wheat. It was least profitable when placed on the new clover seeding. The station has used eight tons of manure to the acre and has reinforced it with 60 pounds of acid phosphate to each ton. The practice of phosphating the manure is strongly recommended by this station.

Profitable to Give Cow Rest Before Freshening

It will pay to give your cows a rest of six to eight weeks before they freshen again. If they are in good flesh they will need but little grain. Cows thin in flesh should be fed liberally so that they will put on flesh. A bushel of corn fed to a dairy cow before calving is sometimes worth as much as two bushels fed after freshening.

Alfalfa Seed Should Be Tested for Germination

Alfalfa seed intended for planting this fall should be submitted to a competent seed analyst for a determination of purity and germination. Many noxious weeds are spread and serious losses occur from failure to observe this simple and inexpensive precaution.

Forests Damaged by Insects and Diseases

Big Losses Emphasize Need for Educational Work.

(Prepared by the United States Department of Agriculture.)

Foresters and entomologists of the United States Department of Agriculture declare that the losses caused by insect attacks upon living trees and crude, finished and utilized forest products amount to \$130,000,000 annually. The recent report touching upon this and other forestry subjects declares that these vast losses clearly emphasize the need for educational work and the development of systematic control measures which now are woefully inadequate.

This report, which formed part of the 1922 year book of the department and which may be obtained upon request as a separate pamphlet, pointed out that the western pine beetle, the gypsy moth, the chestnut blight and the white pine blister rust are the most damaging of the insects and diseases which are now attacking the living trees and forest products.

"Altogether," it is stated, "the most important present example of the imported disease is the white pine blister rust. Introduced from Europe within the past 20 years it is now widespread through the northern range of the eastern white pine, and has recently been found extensively in British Columbia and, to a limited extent, in Washington on the western white pine. The very existence of the western white and sugar pine forests is threatened."

The destruction of currant and gooseberry bushes is the means of ridding the forests of the blister rust. Other insects and diseases also take an enormous toll every year, and the cost in dollars to fight these damaging pests would be but a fraction of the loss they cause, the report states.

Best Grasshopper Bait From Poisoned Sawdust

Sawdust is cheaper feed for grasshoppers than grain crops. With a little arsenic added, one feeding will satisfy their appetite.

"Grasshoppers annually destroy thousands of dollars' worth of crops in Wisconsin as well as other states. Killing with poisoned bait has proved a cheap, effective way to fight them. A mixture of sawdust, 25 pounds; middlings, 5 pounds; white arsenic, 1 1/2 pounds; salt, 1 1/2 pounds; amyl acetate, 12 teaspoonfuls, moistened with water and scattered broadcast over the field which is being eaten by grasshoppers is the cheapest, surest cure so far," declares C. L. Fluke of the Wisconsin College of Agriculture. "The salt and amyl acetate is the attractive part of the bait."

"The bait gives best results when applied just before feeding time for the hoppers. This may be early in the morning or in the afternoon depending on the kind of grasshoppers."

"Put the amyl acetate in the water and add to the dry mixed sawdust, arsenic and salt. When thoroughly mixed add the middlings and stir." Fluke directs. "Hardwood sawdust is best."

Way of Treating Softer Woods for Fence Posts

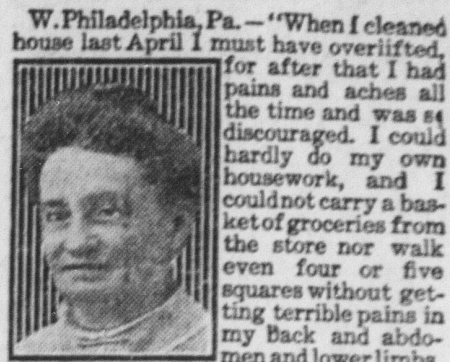
The best method of treating the softer woods for fence posts is to soak them for a time depending on the kind of wood, letting the creosote come about eight or ten inches above the ground level. It is then advisable to take them out of the hot creosote and then give them a cold bath over the entire post; that is, soak the entire post in the creosote. This preserves the whole post about equally so that the top will not give way before the bottom and so on. The brush method of treating fence posts would help somewhat, but is not nearly so effective as the hot and cold treatment.

Sodium Fluorid Useful in Destroying Vermin

A single pair of chicken lice will number 125,000 in eight weeks. A simple remedy is to dust or dip the chickens in sodium fluorid twice a year. This powder can be purchased from most any druggist and when applied as a powder should be distributed in small quantities over all parts of the body of the chicken. Ten to twelve pinches of the powder is usually sufficient. It may be used in solution by dissolving at the rate of one ounce per gallon of water.

MRS. BUTLER'S AGES AND PAINS

Vanished After Using Lydia E. Pinkham's Vegetable Compound



W. Philadelphia, Pa.—"When I cleaned house last April I must have overworked, for after that I had pains and aches all the time and was so discouraged, I could hardly do my own housework, and I could not carry a basket of groceries from the store nor walk even four or five squares without getting terrible pains in my back and abdomen and lower limbs. I went to visit a friend in Mt. Holly, N. J., and she said, 'Mrs. Butler, why don't you take Lydia E. Pinkham's Vegetable Compound?' My husband said that if it did her so much good for the same trouble, I should try it. So I have taken it and it is doing me good. Whenever I feel heavy or bad, I put me right on my feet again. I am able to do my work with pleasure and am getting strong and stout. I still take the Vegetable Compound and Liver Pills, and am using Lydia E. Pinkham's Sanative Wash."—Mrs. CHARLES BUTLER, 1233 S. Hanson St., W. Phila., Pa.

Write to Lydia E. Pinkham Medicine Co., Lynn, Mass., for a free copy of Lydia E. Pinkham's Private Text Book upon "Ailments of Women."

Glenn's Sulphur Soap

Contains 33% Pure Sulphur (As Druggists)

Sulphur is an effective remedy for skin troubles. Chronic eczema, acne, and various scaly eruptions are greatly benefited by Glenn's, which cleanses, disinfects, whitens and beautifies the skin. Millions find it delightful.

For Toilet - Bath - Shampoo

Bohland's Styptic Cotton, Etc.

BROKEN VACUUM BOTTLES Made Good As New With A Simplex Refill

Guaranteed Refills sent by Parcel Post, C. O. D. Give name of bottle and size.

Price \$1.25—Bottle \$2.00

Simplex Vacuum Mfg. Co. 2407 Orthodox St., Franklin, Pa.

Stick to it. Persistence wins. "Diamonds are only chunks of coal that stuck to their job," says Forbes.—Boston Evening Transcript.

Aspirin

Say "Bayer" and Insist!



Genuine

Unless you see the name "Bayer" on package or on tablets you are not getting the genuine Bayer product prescribed by physicians over twenty-two years and proved safe by millions for

Colds	Headache
Toothache	Lumbago
Earache	Rheumatism
Neuralgia	Pain, Pain

Accept "Bayer Tablets of Aspirin" only. Each unbroken package contains proper directions. Handy boxes of twelve tablets cost few cents. Druggists also sell bottles of 24 and 100. Aspirin is the trade mark of Bayer Manufacture of Monoaceticacidester of Salicylicacid.—Advertisement.

Any woman can marry any man she wants—if he is willing.

The opportunity is often lost by liberating too long.

Have You a Bad Back?

You can't be happy when every day brings morning lameness, torturing backache and sharp, cutting pains. So, why not find the cause and correct it? Likely it's your kidneys. If you suffer headaches and dizziness, too—feel tired, nervous and depressed, it's further proof your kidneys need help. Neglect is dangerous! Begin using Doan's Kidney Pills today. Thousands have been helped by Doan's. They should help you. Ask your neighbor!

A Maryland Case

Mrs. Wm. Baker, Washington St., Berlin, Md., says: "My kidneys were weak and I had such awful pains in my back, I couldn't keep on my feet to do my work. I was hardly ever free from nervous headaches. My kidneys acted irregularly, too. I used Doan's Kidney Pills and they soon relieved me of the aches and pains and all symptoms of kidney complaint."

Get Doan's at Any Store, 60c a Box

DOAN'S KIDNEY PILLS

POSTER-MILBURN CO., BUFFALO, N. Y.