



CHEVROLET
for Economical Transportation
OF
Farm Products

Modern, progressive farmers, being also business men, now depend on fast cheap motor transportation to save time, save products and get the money.

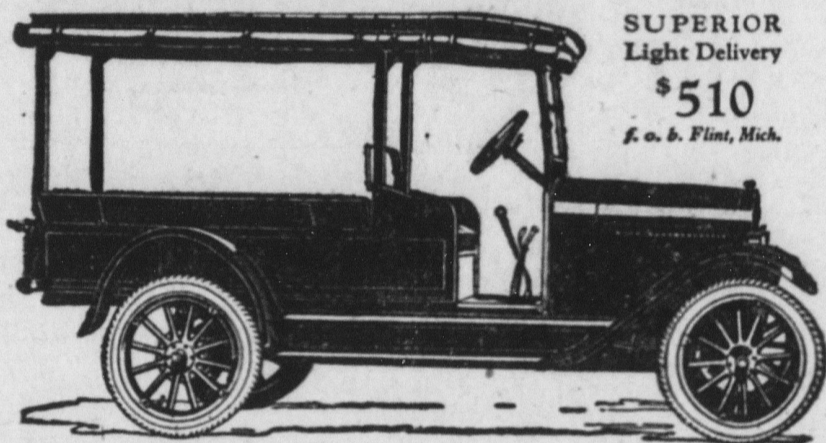
Chevrolet Superior Light Delivery, with four post body was built especially for farm needs. It has the space and power for a big load, which it moves fast at a very low cost per mile.

For heavy work, Chevrolet Utility Express Truck at only \$575, chassis only, offers remarkable value. Fits any standard truck body.

Chevrolet Motor Company
Division of General Motors Corporation
Detroit, Michigan

Prices f. o. b. Flint, Mich.
Superior 2-Pass. Roadster \$510
Superior 5-Pass. Touring 525
Superior 2-Pass. Utility
Coupe 680
Superior 4-Pass. Sedanette 850
Superior 5-Pass. Sedan 860
Superior Light Delivery 510
Superior Commercial
Chassis 425
Utility Express Truck
Chassis 575

Dealers and Service
Stations Everywhere



SUPERIOR
Light Delivery
\$510
f. o. b. Flint, Mich.

Too much dignity merely scares the children. Life best cure for hard luck is hard work.

Make your Town Spotless Town Clean Up!
and keep it up—
Make all house-cleaning easy with Sapolio.
Large Cake—No Waste
Sapolio
Morgan's Sons Co., New York

Use SAPOLIO



Canada Offers "Last Chance" for Virgin Farms

THINK of what you could produce on a farm of virgin fertility, without the burden of high-acreage cost. Think of what 20-to-40 bushel wheat would mean to you under these conditions, and of dairying and stock raising on cheap pasture land. Land pays for itself in a few crops—no artificial fertilizer—no heavy investment. You have envied the farmer who got his start when land was cheap. Here's your chance, perhaps your last chance, for the same brand of prosperity.

Western Canada—Your Opportunity!

Western Canada is the farmer's land of opportunity. Thousands of settlers who started not many years ago with little or nothing, are today the owners of fine farms, with comfortable homes and barns, thro' bred stock, dairy herds—all the marks of prosperity. Yet land is not dear—only \$15 to \$20 an acre for rich, virgin, prairie convenient to railways. Land is not dear in Western Canada—yet—because there is so much of it. But many settlers are expected in 1923, and now is your opportunity, before the best farms are taken. Get started. Taxes are reduced, not raised, on land brought under cultivation. On farm buildings, improvements, machinery, personal effects, automobile, etc., there is no tax at all. Canada wants workers—it wants its land farmed—and the farmers, through their municipal councils, have practical control of all local taxation.

Special Renter's Plan—Buy Out of Profits

To aid and encourage the honest worker with perhaps little capital, the Canadian Government has a "Renter's Plan", whereby one may work a new or improved farm—"try it out" for several years if desired—and buy a farm of his own out of profits.

Thirty-Two Years to Pay

For the benefit of those wishing to buy land, a national non-profit sharing organization—the Canada Colonization Association—has been established, with head office at Winnipeg, and United States office at St. Paul. This Association offers selected land convenient to railways—much of it at \$15 to \$20 per acre—on very small cash payment; no further payment until third year; balance extended over thirty years, but purchase may pay up and obtain title at any time, if desired. Interest six per cent on deferred payments.

Special Excursion Rates to Western Canada

In order that you may inspect the land—see for yourself—judge of its value and fertility—special excursion trips of inspection will leave United States points on the first and third Tuesday of each month. Single fare plus \$2 for the round trip, available from all principal centers. Take advantage of these low railroad rates to inspect for yourself the opportunities which Western Canada has to offer you. Seeing is believing. The nearest Canadian Government Agency will give you all information. The men in charge are Government officials, interested only in the service of the prospective settler. We help you find your opportunity. Let us know something of your position and receive free book with maps and information how special railroad rates can be arranged for a trip of inspection. Mail the coupon.

Free Homesteads are still available in some localities.
Canada welcomes tourists—come and see our country for yourself. No Passports required.

Address Nearest Agent:
F. A. HARRISON, Desk W, 308 N. Second St., Harrisburg, Pa.
Please send me your free book on Canada, I am particularly interested in:
Western Canada { } Eastern Canada { } Besting
Cattle Raising { } Stock Raising { } dairying
Special Railway Rates { } Diversified Farming { } buying

Name _____
R.F.D. No. or St. Address _____
P.O. _____ State _____

RETAIN QUALITY OF MILK SUPPLY

During Warm Weather Every Means Must Be Taken to Prevent Contamination.

FLIES AND DUST INJURIOUS

Producer Should Have All Manure Heaps Removed and Fill in All Low Places—Important That Plant Be Kept Clean.

(Prepared by the United States Department of Agriculture.)

Summer is the most strenuous season for those engaged in the dairy business, both producers and distributors, and at the same time greater responsibility rests on the consumer to keep the milk or cream wholesome after it has been delivered. Great care is necessary at all seasons to supply safe and pleasing products, but during warm weather every means must be taken to prevent contamination and keep down the temperature, from the time milk is drawn from the cow until it is consumed. The presence of flies and dust, and the rapid multiplication of bacteria due to heat, are the chief summer difficulties.

Where Responsibility Rests.

The responsibility for a good, clean, palatable product rests almost equally on producer, distributor and consumer, says the United States Department of Agriculture in calling attention to the importance of preventive measures, many of which may be taken at once on farms and in milk plants.

There are many ways in which the milk producer may prepare to meet the adverse conditions of summer, says the department. To reduce the number of flies and keep the cows clean he should have all the manure heaps removed this spring. Low places in the yards may be filled in to prevent the formation of puddles. Screens should be repaired before flies arrive. Fly traps and poison, if used early in the season, will help to reduce the number of the pests later in the summer. Sterilizing equipment and coolers should be in good condition, so there will be little danger of their being out of use at any time during the hot weather. It is particularly important that dairymen sterilize strainer cloths, often a prolific source of contamination.

Milk distributors are urged to prepare for the danger months by giving the plant and surroundings a thorough cleaning, by fixing the screens, painting machinery and fixtures so that it will be easier to keep them clean, replacing worn parts, and making sure of a plentiful supply of ice. The dealer is also reminded that, he can do a great deal to improve the milk supply by urging producers to take precautions against contamination and to provide for rapid cooling.

Important Work of Consumer.

The consumer can do his part in a number of ways. The most important, perhaps, is the taking in of the bottles from the doorstep before the milk or cream has become warm. The next thing is to keep it cold until the time for use. The more milk is poured from one container into another the more chances for contamination, and for that reason it is best to keep it in the original container until all of it is used. The cap should be kept on the bottle or the contents should be protected by covering the bottle with an inverted tumbler. The consumer will help a great deal by cleaning the bottles and returning them promptly to the dealer. Milk bottles should not be used for anything except milk or cream, as it is very difficult to rid them of foreign odors and tastes. It goes almost without saying that a clean refrigerator is an important factor in keeping milk good-flavored and wholesome.

PUREBREDS GAIN IN KANSAS

Increase in Sires and Females Secured by Farmers Through Efforts of County Agents.

Altogether 396 purebred sires and 275 purebred females were secured by farmers in Kansas through the efforts of county agents, according to the annual report to the United States Department of Agriculture of the county agent leader of the state of Kansas, covering the year 1921. Two hundred and seventy-five scrubbers were replaced by purebreds, 152 purebred herds were started and 1,117 animals were sold at 23 association sales held by the 21 livestock improvement associations formed to support the better-sires campaign. A total of 250 meetings were held in the 18 counties which were active in the work, with an attendance of 4,995 farmers.

BE LIBERAL WITH POTATOES

Extra Amount of Seed Will Make Most Profitable Returns When Crop Is Harvested.

It is important to allow plenty of seed to the acre when planting potatoes. While in many cases a planting rate of seven to ten bushels per acre gives a good yield, it is almost certain that a rate of 12 to 15 bushels of seed per acre will return the extra seed several times. When seed is relatively cheap as much as 15 bushels of seed per acre may profitably be used.

ROUNDED INLET WILL HELP PIPE CAPACITY

Efficiency of Culverts Increased by Modification.

Opening With Sharp Corners Retards Flow of Water—Smooth Entrance Well Worth Considering in Building.

(Prepared by the United States Department of Agriculture.)

The water-carrying capacity of a culvert pipe can be appreciably increased by merely rounding the inlet end, according to tests conducted by the bureau of public roads, United States Department of Agriculture. These tests were conducted in the hydraulic laboratory of the State university of Iowa and indicate that a comparatively inexpensive modification in the installation of pipe culverts will considerably increase their efficiency.

It is a well-known fact that an opening with sharp corners retards the flow of water. The curved entrance does not need to be large to be beneficial. Simply filling and rounding the groove at the bell end of a vitrified pipe with cement mortar will increase the capacity. The same result can be secured with any kind of pipe by placing the end a few inches back from the face of the head wall instead of setting it flush and rounding the concrete so as to form a bell-mouthed entrance. Such an arrangement is particularly effective when the entrance to the culvert is submerged and greater capacity is needed.

From actual tests made on a pipe flowing full of water it was found that the bell end of a sewer pipe at the entrance increased the capacity 10 per cent over that of a pipe of the same size with a sharp-cornered entrance. Filling in the bell end and rounding to an elliptical shape with mortar caused an additional flow of 2 per cent or 12 per cent more than the sharp-cornered entrance. This increase in capacity is due to the elimination of the cross currents and eddies set up by a square-end entrance.

Water will enter a pipe culvert in greater quantities when guided smoothly by a rounded entrance than when retarded by eddies. The slight modification of a pipe culvert entrance by merely rounding the inlet end is well worth while, considering the greater capacity obtained and the small increase in cost of construction.

TO INCREASE POTATO YIELD

Gains of Over Thirty-One Bushels to the Acre Reported From Ohio By Spraying.

When the actual increases in the potato yields of 62 Ohio farmers who sprayed their spuds were checked, they were found to average 31 bushels to the acre. This checks pretty closely with the experience of 32 others who kept figures in 1921, averaging 31.8 bushels to the acre increase.

According to L. H. Parks, of Ohio State university, the increase in yield varied from none to 97 bushels to the acre, or from none to 107 per cent. Out of a total of 106 tests only four have failed to show an increase due to spraying, and 30 of the tests showed gains of over 50 bushels per acre.

In net cash returns these Ohio growers had an average increase of \$30.28 per acre.

The experience of these men also illustrates the importance of thoroughness. "Four applications showed the highest net gain from spraying," reports Mr. Parks. "A distinct relation appeared between gain in yield and thoroughness of spraying. To prevent hopper burn, which is a chief aim of the spray, the under sides of the leaves must be thoroughly drenched."

WAR ON MANY INSECT PESTS

Control Work Centers About Securing Parasites Which in Themselves Are Not Harmful.

Control work against many insect pests centers about securing insect parasites which in themselves are not injurious. In the effort to obtain beneficial species of parasites to aid in the fight against the gipsy and brown-tail moths, the bureau of entomology of the United States Department of Agriculture sends its scientific assistants to Europe to import, breed, and colonize beneficial European parasites of these two insects in this country. Parasites of the gipsy moth are also obtained from Japan and shipped here to be propagated and distributed. Other parasites procured in Japan have been found useful in checking the Japanese beetle. The last shipment of these parasites arrived in December, 1922.

PLANNING FOR POTATO CROP

Selection and Treatment of Seed Should Be Careful to Avoid Various Diseases.

The selection and treatment of seed potatoes should receive strict attention. Each year the potato crop suffers from the ravages of such potato disease as black leg, common scab, dry rot and black scurf. When selecting seed, it is desirable first of all to make sure that it comes from clean sources. A bushel of disease-free potatoes grown on clean land has a decided value over seed which is of uncertain origin.

Los Angeles Woman Tells of Wonderful Experience.



MRS. GUSSIE E. HANSEN.

Mrs. Gussie E. Hansen, of 916 West 52nd Street, is now numbered with the multitude of Los Angeles men and women who have realized the wonderful merits of Tanlac. In relating her experiences, Mrs. Hansen said: "It is wonderful what Tanlac will do for one suffering from stomach trouble, nervousness and run-down condition. I have tried it. "Before taking the treatment everything I ate disagreed with me so that I actually dreaded to sit down to the table. I suffered from constipation, had awful pains across my back, and was so nervous and run down I was in misery all the time. "Tanlac was helping so many others I thought it might help me, too, and it certainly has. Why, my appetite is just splendid, and my stomach is in such good order I eat to my heart's content. My back doesn't bother me any more, and I sleep like a child at night. I can't say too much for Tanlac."

Tanlac is for sale by all good druggists—take no substitute. Over 37 million bottles sold.

Basket Fireless Cooker.
A fireless cooker in basket form has been invented for conveying food that has to be served hot in out-of-door public places.

WHY TAKE LAXATIVES?

Discovery by Science Has Replaced Them.

Pills and salts give temporary relief from constipation only at the expense of permanent injury, says an eminent medical authority.

Science has found a newer, better way—a means as simple as Nature itself.

In perfect health a natural lubricant keeps the food waste soft and moving. But when constipation exists this natural lubricant is not sufficient. Doctors prescribe Nujol because it acts like this natural lubricant and thus secures regular bowel movements by Nature's own method—lubrication.

As Nujol is not a medicine or laxative, it cannot gripe and, like pure water, it is harmless and pleasant.

Nujol is used in leading hospitals. Get a bottle from your druggist today—Advertisement.

Origin of "Bungalow."

"Bungalow" comes from "bonglaw," meaning Bengalese, or built in the style of the Bengalis, an East Indian tribe.

Sure Relief FOR INDIGESTION



6 BELL-ANS Hot water Sure Relief BELL-ANS 25¢ AND 75¢ PACKAGES EVERYWHERE

Vaseline CARBOLATED PETROLEUM JELLY

No skin break too small for notice.
Be very wary of cuts, scratches and skin abrasions, no matter how slight. "Vaseline" Carbolated Petroleum Jelly—applied at once—lessens the possibility of infection.
It comes in bottles—at all druggists and general stores.
CHESEBROUGH MFG. COMPANY (Consolidated) State St. New York
Every "Vaseline" product is recommended everywhere because of its absolute purity and effectiveness.

TOO LATE

Death only a matter of short time. Don't wait until pains and aches become incurable diseases. Avoid painful consequences by taking



LATHROP'S GOLD MEDAL HAARLEM OIL CAPSULES
The world's standard remedy for kidney, liver, bladder and uric acid troubles—the National Remedy of Holland since 1696. Guaranteed. Three sizes, all druggists. Look for the name Gold Medal on every box and accept no imitation.

TO HANDLE WOODLOTS BY LOTUSWOOD SYSTEM

read "Forestry for Profit," by Theophilus Tunis, 24 illustrations, Putnam's Publishers, \$2.50 postpaid; information free. It pays! T. TUNIS, 21 W. Fayette St., Baltimore, Md.

English Dukedoms.
The first English duke was Edward the Black Prince, who was created duke of Cornwall, a title which has ever since belonged to the eldest son of the sovereign during the life of his parent. He is termed duk natus, or born duke, in distinction to dukes creati, or dukes by creation. There were several dukes in the time of the Tudors, but in Elizabeth's reign the title became entirely extinct. James revived it in favor of George Villiers, who was created duke of Buckingham, and Charles II conferred the title on several of his illegitimate sons.

CATARRH

Catarrh is a local disease greatly influenced by Constitutional conditions. HALL'S CATARRH MEDICINE consists of an Ointment which gives Quick Relief by local application, and the Internal Medicine, a Tonic, which acts through the Blood on the Mucous Surfaces and assists in ridding your System of Catarrh. Sold by druggists for over 40 Years. F. J. Cheney & Co., Toledo, O.

Answered by Another Question.

Teacher—"If one man can build a house in twelve days, six men can do it in two days."
Bright Pupil—"Then if one ship crosses the ocean in six days, can six ships cross in one day?"—London Answers.

Just Girls.

Maybelle—"Has he proposed to you yet?" Ethyle—"No, but he has an engagement ring in his voice."

Children Cry for



MOTHER! Fletcher's Castoria is a harmless Substitute for Castor Oil, Paregoric, Drops and Soothing Syrups, especially prepared to relieve Infants one month old to Children all ages of:
Constipation Wind Colic
Flatulency To Sweeten Stomach
Diarrhoea Regulate Bowels
Aids in the assimilation of Food, promoting Cheerfulness, Rest, and Natural Sleep without Opium
To avoid imitations, always look for the signature of Dr. J. C. Fletcher. Proven directions on each package. Physicians everywhere recommend it.