

HE HAD COUGH; WAS WEAK AND SICK LOOKING

Coughed So Hard, Thought
His Chest Would Burst;
Couldn't Breathe.

TOOK HYPO-COD—STOPPED COUGH, GAINED 14 LBS.

"I was so sick with cold, cough and bronchial trouble that I wasn't able to get out of bed for days. The coughing spells were so bad I thought my sore, aching chest would burst. My head was all stopped up so I couldn't breathe and the remedies I tried were like so much water. Vapors and all that stuff were not strong enough to touch my case, so finally I did what I should have done in the first place—I sent down to the drug store for a bottle of this wonderful medicine called Hypo-Cod. It is the real stuff," declared Charlie Fortmann (everybody knows Charlie, the shoemaker), 1018 Light St., Baltimore, Md.

FIXED HIM UP FINE.
"Hypo-Cod increased my weight fourteen pounds. It cured my cough and cold. I feel like a new, rebuilt man since taking Hypo-Cod. I know of a lot of friends around my neighborhood who swear by Hypo-Cod same as I do," continued Mr. Fortmann.

Hypo-Cod is the most modern, most powerful, nicest tasting tonic made. It is the most powerful strength-building, reconstructive tonic that money can buy, according to chemists. It is made of the very finest ingredients, in the famous Earle laboratory at Wheeling, W. Va. Thousands in Baltimore and many thousands elsewhere praise it to the sky. (See formula and directions for use on each bottle.) All druggists have it. Avoid substitutes.—Advertisement.

Juvenile Anatomy.
Mrs. R. L. writes as follows: "The other morning at the breakfast table I reproved my little girl for laughing while she was eating, telling her that she was in danger of getting something in her windpipe."

"Windpipe? What's that?" she inquired innocently, when her six-year-old brother quickly put in: "Don't you know what your windpipe is? Why, that's where your smoke comes from on cold days."—Boston Transcript.

DIYED HER BABY'S COAT, A SKIRT AND CURTAINS WITH "DIAMOND DYES"

Each package of "Diamond Dyes" contains directions so simple any woman can dye or tint her old, worn, faded things new. Even if she has never dyed before, she can put a new, rich color into shabby skirts, dresses, waists, coats, stockings, sweaters, coverings, draperies, hangings, everything. Buy Diamond Dyes—no other kind—then perfect home dyeing is guaranteed. Just tell your druggist whether the material you wish to dye is wool or silk, or whether it is linen, cotton, or mixed goods. Diamond Dyes never streak, spot, fade or run.—Advertisement.

Stray Bits of Wisdom.
The just soul has no peculiar rank. He is a mendicant, a traveler, or a prince, according to God's will. His aim, his profession, is to be just.—George Sand.

Cuticura for Pimply Faces.
To remove pimples and blackheads smear them with Cuticura Ointment. Wash off in five minutes with Cuticura Soap and hot water. Once clear keep your skin clear by using them for daily toilet purposes. Don't fail to include Cuticura Talcum. Advertisement.

On the Links.
"Who's the pair of ginks in purple golf togs?" "Willies of the field."—Louisville Courier-Journal.

FROM 94 POUNDS SHE GOES TO 132

Mrs. Gross Praises Tanlac for
Overcoming Stomach Trouble
of Long Standing—Says
Results Are Priceless.

"Before I took Tanlac I only weighed ninety-four pounds and scarcely had strength to sweep the floor or make the beds; but now I weigh one hundred and thirty-two and am as healthy and happy as can be." This remarkable statement was made, recently, by Mrs. Mabel Gross, 1137 Aldrich St., N., Minneapolis, Minn.

"For nearly two years I had been in a seriously weakened condition and suffered nearly all the time from headache and backache. My nerves were beyond my control and I was terribly dizzy. I couldn't half sleep and my stomach was so out of order that even the sight of food nauseated me.

"The benefits I have received from Tanlac are priceless. I am now a perfectly well woman and my friends often speak of how healthy I look. I certainly have a great deal to praise Tanlac for. Health is worth everything, and that is what Tanlac has meant to me."

Tanlac is for sale by all good druggists. Over 35 million bottles sold.—Advertisement.

Doing Well.
Senator Hale said in a Y. M. C. A. address in Bangor against speculation: "Nothing is so hopeless as a young man speculating. A broker was heard to say to a conferee one day: 'Young George Brown has certainly learnt the market well. He's been speculating nearly a year now, and he's still got some of his father's fortune left.'"

WHY TAKE LAXATIVES?

Discovery by Science Has Replaced Them.
Pills and salts give temporary relief from constipation only at the expense of permanent injury, says an eminent authority.

Science has found a newer, better way—a means as simple as Nature itself.

In perfect health a natural lubricant keeps the food waste soft and moving. But when constipation exists this natural lubricant is not sufficient. Doctors prescribe Nujol because it acts like this natural lubricant and thus secures regular bowel movements by Nature's own method—lubrication.

As Nujol is not a medicine or laxative, it cannot gripe and, like pure water, it is harmless and pleasant.

Nujol is used in leading hospitals. Get a bottle from your druggist today.—Advertisement.

You Can Bet Your Life on it.
If diplomats had to sleep in pup tents and eat soldier rations while holding conferences it wouldn't take them long to reach some sort of conclusion.—Toledo Blade.

Some people can't understand the difference between mismanagement and misfortune.

Your wife, as well as your sins, will find you out.

FRESH TOMATOES IN GOOD DEMAND

Rapid Growth of Industry in United States Is Shown in Bulletin by Parsons.

GAIN OF 50 PER CENT SHOWN

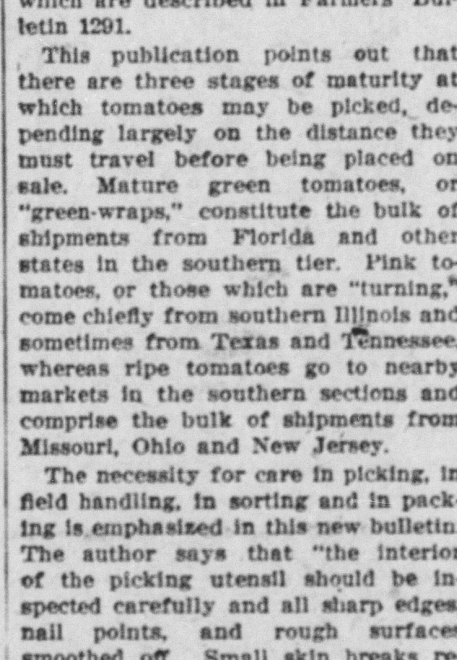
Becoming Increasingly Important That Producers and Shippers Use Only Most Approved Methods of Harvesting and Packing.

"Preparation of Fresh Tomatoes for Market" is the title of Farmers' Bulletin 1291, just issued by the bureau of agricultural economics, United States Department of Agriculture. In this new bulletin the author, F. Earl Parsons, gives specific suggestions as to the best methods of getting this popular vegetable from the field to the market.

Big Gain Last Year.
A 50-cent gain in tomato shipments in 1922, compared with movement of the previous year, shows the increasing demand for this product. Average shipments have been less than 18,000 cars per year, but during the past season 28,000 cars were forwarded. In view of the growth of this industry, it is becoming increasingly important that producers and shippers use only the most approved methods of harvesting, packing, grading and loading, which are described in Farmers' Bulletin 1291.

This publication points out that there are three stages of maturity at which tomatoes may be picked, depending largely on the distance they must travel before being placed on sale. Mature green tomatoes, or "green-wraps," constitute the bulk of shipments from Florida and other states in the southern tier. Pink tomatoes, or those which are "turning," come chiefly from southern Illinois and sometimes from Texas and Tennessee, whereas ripe tomatoes go to nearby markets in the southern sections and comprise the bulk of shipments from Missouri, Ohio and New Jersey.

The necessity for care in picking, in field handling, in sorting and in packing is emphasized in this new bulletin. The author says that "the interior of the picking utensil should be inspected carefully and all sharp edges, nail points, and rough surfaces smoothed off. Small skin breaks re-



Soil Survey Party at Work.

the homeseeker or farmer looking for a new location, from road engineers, land banks, and large loan companies.

Co-operating with the Department of Justice, representatives of the soil survey furnished expert testimony in a case involving the changing of state boundaries during the past year. A detailed map was made of the soils of the Red River bottoms, in the vicinity of the Burk Burnett oil field, for the purpose of showing the process by which the bottoms were built up, this fact having an important bearing on the settlement of a boundary dispute between Texas and Oklahoma. The question as to whether the land in controversy was formed by accretion or by avulsion would practically decide the issue, and consequently extremely detailed soil maps, profile maps of deep borings, and careful mechanical analyses of material were necessary in order to determine the presence or absence of a gradation from coarse to finer alluvial sediments from the edge of the bottoms toward the uplands.

MEANS OF SPREADING "T. B."

Several Causes Responsible for Prevalence of Dread Disease Among Cattle Herds:

"How did tuberculosis get such a hold in my herd?" is a question that has puzzled many a stockman. The following causes have been found by experts to be largely responsible for the prevalence of tuberculosis among cattle:

Bringing untested cattle into the herd.

Common drinking tank.

Common feeding troughs or pasture. Nosing at fence lines or breaking through fences.

Poorly ventilated barns or sheds.

Feeding of unpasteurized milk from infected cows to calves or hogs.

Unburned dead animals eaten or scattered by hogs or dogs.

Breeding to infected bull or serving cows outside tested herds.

There are other ways in which the disease can be spread, but undoubtedly stockmen can do much to check the inroads of this disease by reducing to the minimum danger from the sources mentioned.

RAPE VALUABLE AS PASTURE

Plants Sometimes Grow More Than Three Feet High Yielding Twenty Tons of Forage.

Rape is a rank growing forage plant closely resembling the rutabaga or Swedish turnip, but with a root much like that of the cabbage. The leaves are large, smooth and spreading. The plant ordinarily reaches a height of 18 to 24 inches and yields from eight to ten tons of green forage to an acre. Under favorable conditions the plants sometimes grow more than three high, while yields of 20 tons of forage are not uncommon. The value of the crop lies in its use as a pasture.

ACID PHOSPHATE WILL HELP

Checks Loss of Nitrogen and Adds Valuable Plant Food—Not Good as Preservative.

The use of acid phosphate with manure is a help in checking the loss of nitrogen, as well as actually adding valuable plant food. Ground rock phosphate is frequently recommended for use with manure, but it does not do much good as a preservative, though it is undoubtedly of benefit as a source of phosphorus. If peat is readily available it will be good as a preservative, almost as good as acid phosphate, and possibly much cheaper.

SOIL SURVEYS SERVE VARIETY OF DEMANDS

Prominent Are Those From Various Developing Companies.

Interesting to Farmer or Homeseeker Looking for New Location and to Road Engineers and Large Loan Companies.

(Prepared by the United States Department of Agriculture.)

Soil surveys made by the bureau of soils, United States Department of Agriculture, are filling an increasing variety of demands. Prominent among these demands, in addition to those coming from the co-operating states, are those from development companies interested in opening up large tracts of cut-over land to settlement, from



Soil Survey Party at Work.

the homeseeker or farmer looking for a new location, from road engineers, land banks, and large loan companies.

Co-operating with the Department of Justice, representatives of the soil survey furnished expert testimony in a case involving the changing of state boundaries during the past year. A detailed map was made of the soils of the Red River bottoms, in the vicinity of the Burk Burnett oil field, for the purpose of showing the process by which the bottoms were built up, this fact having an important bearing on the settlement of a boundary dispute between Texas and Oklahoma. The question as to whether the land in controversy was formed by accretion or by avulsion would practically decide the issue, and consequently extremely detailed soil maps, profile maps of deep borings, and careful mechanical analyses of material were necessary in order to determine the presence or absence of a gradation from coarse to finer alluvial sediments from the edge of the bottoms toward the uplands.

Co-operating with the Department of Justice, representatives of the soil survey furnished expert testimony in a case involving the changing of state boundaries during the past year. A detailed map was made of the soils of the Red River bottoms, in the vicinity of the Burk Burnett oil field, for the purpose of showing the process by which the bottoms were built up, this fact having an important bearing on the settlement of a boundary dispute between Texas and Oklahoma. The question as to whether the land in controversy was formed by accretion or by avulsion would practically decide the issue, and consequently extremely detailed soil maps, profile maps of deep borings, and careful mechanical analyses of material were necessary in order to determine the presence or absence of a gradation from coarse to finer alluvial sediments from the edge of the bottoms toward the uplands.

Co-operating with the Department of Justice, representatives of the soil survey furnished expert testimony in a case involving the changing of state boundaries during the past year. A detailed map was made of the soils of the Red River bottoms, in the vicinity of the Burk Burnett oil field, for the purpose of showing the process by which the bottoms were built up, this fact having an important bearing on the settlement of a boundary dispute between Texas and Oklahoma. The question as to whether the land in controversy was formed by accretion or by avulsion would practically decide the issue, and consequently extremely detailed soil maps, profile maps of deep borings, and careful mechanical analyses of material were necessary in order to determine the presence or absence of a gradation from coarse to finer alluvial sediments from the edge of the bottoms toward the uplands.

Co-operating with the Department of Justice, representatives of the soil survey furnished expert testimony in a case involving the changing of state boundaries during the past year. A detailed map was made of the soils of the Red River bottoms, in the vicinity of the Burk Burnett oil field, for the purpose of showing the process by which the bottoms were built up, this fact having an important bearing on the settlement of a boundary dispute between Texas and Oklahoma. The question as to whether the land in controversy was formed by accretion or by avulsion would practically decide the issue, and consequently extremely detailed soil maps, profile maps of deep borings, and careful mechanical analyses of material were necessary in order to determine the presence or absence of a gradation from coarse to finer alluvial sediments from the edge of the bottoms toward the uplands.

Co-operating with the Department of Justice, representatives of the soil survey furnished expert testimony in a case involving the changing of state boundaries during the past year. A detailed map was made of the soils of the Red River bottoms, in the vicinity of the Burk Burnett oil field, for the purpose of showing the process by which the bottoms were built up, this fact having an important bearing on the settlement of a boundary dispute between Texas and Oklahoma. The question as to whether the land in controversy was formed by accretion or by avulsion would practically decide the issue, and consequently extremely detailed soil maps, profile maps of deep borings, and careful mechanical analyses of material were necessary in order to determine the presence or absence of a gradation from coarse to finer alluvial sediments from the edge of the bottoms toward the uplands.

Co-operating with the Department of Justice, representatives of the soil survey furnished expert testimony in a case involving the changing of state boundaries during the past year. A detailed map was made of the soils of the Red River bottoms, in the vicinity of the Burk Burnett oil field, for the purpose of showing the process by which the bottoms were built up, this fact having an important bearing on the settlement of a boundary dispute between Texas and Oklahoma. The question as to whether the land in controversy was formed by accretion or by avulsion would practically decide the issue, and consequently extremely detailed soil maps, profile maps of deep borings, and careful mechanical analyses of material were necessary in order to determine the presence or absence of a gradation from coarse to finer alluvial sediments from the edge of the bottoms toward the uplands.

Co-operating with the Department of Justice, representatives of the soil survey furnished expert testimony in a case involving the changing of state boundaries during the past year. A detailed map was made of the soils of the Red River bottoms, in the vicinity of the Burk Burnett oil field, for the purpose of showing the process by which the bottoms were built up, this fact having an important bearing on the settlement of a boundary dispute between Texas and Oklahoma. The question as to whether the land in controversy was formed by accretion or by avulsion would practically decide the issue, and consequently extremely detailed soil maps, profile maps of deep borings, and careful mechanical analyses of material were necessary in order to determine the presence or absence of a gradation from coarse to finer alluvial sediments from the edge of the bottoms toward the uplands.

Co-operating with the Department of Justice, representatives of the soil survey furnished expert testimony in a case involving the changing of state boundaries during the past year. A detailed map was made of the soils of the Red River bottoms, in the vicinity of the Burk Burnett oil field, for the purpose of showing the process by which the bottoms were built up, this fact having an important bearing on the settlement of a boundary dispute between Texas and Oklahoma. The question as to whether the land in controversy was formed by accretion or by avulsion would practically decide the issue, and consequently extremely detailed soil maps, profile maps of deep borings, and careful mechanical analyses of material were necessary in order to determine the presence or absence of a gradation from coarse to finer alluvial sediments from the edge of the bottoms toward the uplands.

Co-operating with the Department of Justice, representatives of the soil survey furnished expert testimony in a case involving the changing of state boundaries during the past year. A detailed map was made of the soils of the Red River bottoms, in the vicinity of the Burk Burnett oil field, for the purpose of showing the process by which the bottoms were built up, this fact having an important bearing on the settlement of a boundary dispute between Texas and Oklahoma. The question as to whether the land in controversy was formed by accretion or by avulsion would practically decide the issue, and consequently extremely detailed soil maps, profile maps of deep borings, and careful mechanical analyses of material were necessary in order to determine the presence or absence of a gradation from coarse to finer alluvial sediments from the edge of the bottoms toward the uplands.

Co-operating with the Department of Justice, representatives of the soil survey furnished expert testimony in a case involving the changing of state boundaries during the past year. A detailed map was made of the soils of the Red River bottoms, in the vicinity of the Burk Burnett oil field, for the purpose of showing the process by which the bottoms were built up, this fact having an important bearing on the settlement of a boundary dispute between Texas and Oklahoma. The question as to whether the land in controversy was formed by accretion or by avulsion would practically decide the issue, and consequently extremely detailed soil maps, profile maps of deep borings, and careful mechanical analyses of material were necessary in order to determine the presence or absence of a gradation from coarse to finer alluvial sediments from the edge of the bottoms toward the uplands.

Co-operating with the Department of Justice, representatives of the soil survey furnished expert testimony in a case involving the changing of state boundaries during the past year. A detailed map was made of the soils of the Red River bottoms, in the vicinity of the Burk Burnett oil field, for the purpose of showing the process by which the bottoms were built up, this fact having an important bearing on the settlement of a boundary dispute between Texas and Oklahoma. The question as to whether the land in controversy was formed by accretion or by avulsion would practically decide the issue, and consequently extremely detailed soil maps, profile maps of deep borings, and careful mechanical analyses of material were necessary in order to determine the presence or absence of a gradation from coarse to finer alluvial sediments from the edge of the bottoms toward the uplands.

Co-operating with the Department of Justice, representatives of the soil survey furnished expert testimony in a case involving the changing of state boundaries during the past year. A detailed map was made of the soils of the Red River bottoms, in the vicinity of the Burk Burnett oil field, for the purpose of showing the process by which the bottoms were built up, this fact having an important bearing on the settlement of a boundary dispute between Texas and Oklahoma. The question as to whether the land in controversy was formed by accretion or by avulsion would practically decide the issue, and consequently extremely detailed soil maps, profile maps of deep borings, and careful mechanical analyses of material were necessary in order to determine the presence or absence of a gradation from coarse to finer alluvial sediments from the edge of the bottoms toward the uplands.

Co-operating with the Department of Justice, representatives of the soil survey furnished expert testimony in a case involving the changing of state boundaries during the past year. A detailed map was made of the soils of the Red River bottoms, in the vicinity of the Burk Burnett oil field, for the purpose of showing the process by which the bottoms were built up, this fact having an important bearing on the settlement of a boundary dispute between Texas and Oklahoma. The question as to whether the land in controversy was formed by accretion or by avulsion would practically decide the issue, and consequently extremely detailed soil maps, profile maps of deep borings, and careful mechanical analyses of material were necessary in order to determine the presence or absence of a gradation from coarse to finer alluvial sediments from the edge of the bottoms toward the uplands.

Co-operating with the Department of Justice, representatives of the soil survey furnished expert testimony in a case involving the changing of state boundaries during the past year. A detailed map was made of the soils of the Red River bottoms, in the vicinity of the Burk Burnett oil field, for the purpose of showing the process by which the bottoms were built up, this fact having an important bearing on the settlement of a boundary dispute between Texas and Oklahoma. The question as to whether the land in controversy was formed by accretion or by avulsion would practically decide the issue, and consequently extremely detailed soil maps, profile maps of deep borings, and careful mechanical analyses of material were necessary in order to determine the presence or absence of a gradation from coarse to finer alluvial sediments from the edge of the bottoms toward the uplands.

Co-operating with the Department of Justice, representatives of the soil survey furnished expert testimony in a case involving the changing of state boundaries during the past year. A detailed map was made of the soils of the Red River bottoms, in the vicinity of the Burk Burnett oil field, for the purpose of showing the process by which the bottoms were built up, this fact having an important bearing on the settlement of a boundary dispute between Texas and Oklahoma. The question as to whether the land in controversy was formed by accretion or by avulsion would practically decide the issue, and consequently extremely detailed soil maps, profile maps of deep borings, and careful mechanical analyses of material were necessary in order to determine the presence or absence of a gradation from coarse to finer alluvial sediments from the edge of the bottoms toward the uplands.

Co-operating with the Department of Justice, representatives of the soil survey furnished expert testimony in a case involving the changing of state boundaries during the past year. A detailed map was made of the soils of the Red River bottoms, in the vicinity of the Burk Burnett oil field, for the purpose of showing the process by which the bottoms were built up, this fact having an important bearing on the settlement of a boundary dispute between Texas and Oklahoma. The question as to whether the land in controversy was formed by accretion or by avulsion would practically decide the issue, and consequently extremely detailed soil maps, profile maps of deep borings, and careful mechanical analyses of material were necessary in order to determine the presence or absence of a gradation from coarse to finer alluvial sediments from the edge of the bottoms toward the uplands.

Co-operating with the Department of Justice, representatives of the soil survey furnished expert testimony in a case involving the changing of state boundaries during the past year. A detailed map was made of the soils of the Red River bottoms, in the vicinity of the Burk Burnett oil field, for the purpose of showing the process by which the bottoms were built up, this fact having an important bearing on the settlement of a boundary dispute between Texas and Oklahoma. The question as to whether the land in controversy was formed by accretion or by avulsion would practically decide the issue, and consequently extremely detailed soil maps, profile maps of deep borings, and careful mechanical analyses of material were necessary in order to determine the presence or absence of a gradation from coarse to finer alluvial sediments from the edge of the bottoms toward the uplands.

Co-operating with the Department of Justice, representatives of the soil survey furnished expert testimony in a case involving the changing of state boundaries during the past year. A detailed map was made of the soils of the Red River bottoms, in the vicinity of the Burk Burnett oil field, for the purpose of showing the process by which the bottoms were built up, this fact having an important bearing on the settlement of a boundary dispute between Texas and Oklahoma. The question as to whether the land in controversy was formed by accretion or by avulsion would practically decide the issue, and consequently extremely detailed soil maps, profile maps of deep borings, and careful mechanical analyses of material were necessary in order to determine the presence or absence of a gradation from coarse to finer alluvial sediments from the edge of the bottoms toward the uplands.

Co-operating with the Department of Justice, representatives of the soil survey furnished expert testimony in a case involving the changing of state boundaries during the past year. A detailed map was made of the soils of the Red River bottoms, in the vicinity of the Burk Burnett oil field, for the purpose of showing the process by which the bottoms were built up, this fact having an important bearing on the settlement of a boundary dispute between Texas and Oklahoma. The question as to whether the land in controversy was formed by accretion or by avulsion would practically decide the issue, and consequently extremely detailed soil maps, profile maps of deep borings, and careful mechanical analyses of material were necessary in order to determine the presence or absence of a gradation from coarse to finer alluvial sediments from the edge of the bottoms toward the uplands.

Co-operating with the Department of Justice, representatives of the soil survey furnished expert testimony in a case involving the changing of state boundaries during the past year. A detailed map was made of the soils of the Red River bottoms, in the vicinity of the Burk Burnett oil field, for the purpose of showing the process by which the bottoms were built up, this fact having an important bearing on the settlement of a boundary dispute between Texas and Oklahoma. The question as to whether the land in controversy was formed by accretion or by avulsion would practically decide the issue, and consequently extremely detailed soil maps, profile maps of deep borings, and careful mechanical analyses of material were necessary in order to determine the presence or absence of a gradation from coarse to finer alluvial sediments from the edge of the bottoms toward the uplands.

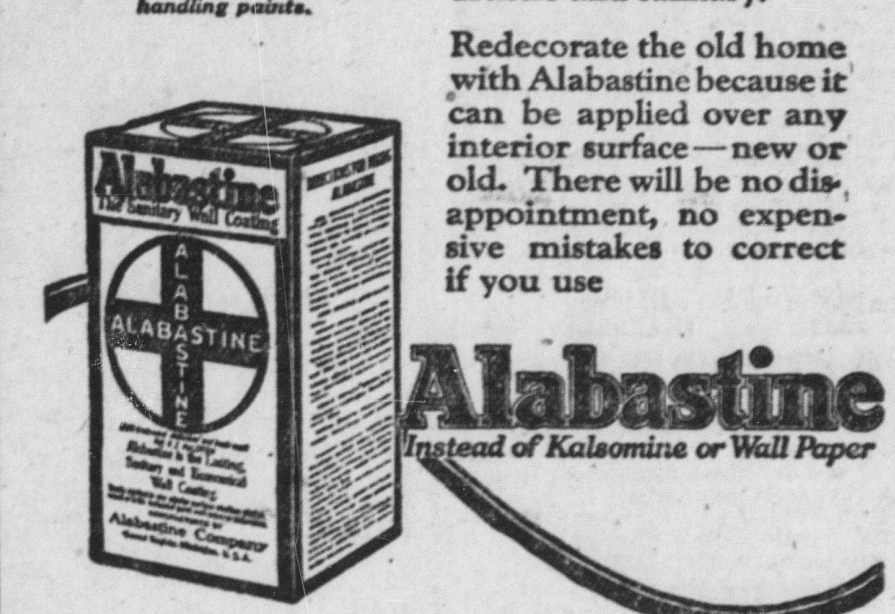
Co-operating with the Department of Justice, representatives of the soil survey furnished expert testimony in a case involving the changing of state boundaries during the past year. A detailed map was made of the soils of the Red River bottoms, in the vicinity of the Burk Burnett oil field, for the purpose of showing the process by which the bottoms were built up, this fact having an important bearing on the settlement of a boundary dispute between Texas and Oklahoma. The question as to whether the land in controversy was formed by accretion or by avulsion would practically decide the issue, and consequently extremely detailed soil maps, profile maps of deep borings, and careful mechanical analyses of material were necessary in order to determine the presence or absence of a gradation from coarse to finer alluvial sediments from the edge of the bottoms toward the uplands.

Co-operating with the Department of Justice, representatives of the soil survey furnished expert testimony in a case involving the changing of state boundaries during the past year. A detailed map was made of the soils of the Red River bottoms, in the vicinity of the Burk Burnett oil field, for the purpose of showing the process by which the bottoms were built up, this fact having an important bearing on the settlement of a boundary dispute between Texas and Oklahoma. The question as to whether the land in controversy was formed by accretion or by avulsion would practically decide the issue, and consequently extremely detailed soil maps, profile maps of deep borings, and careful mechanical analyses of material were necessary in order to determine the presence or absence of a gradation from coarse to finer alluvial sediments from the edge of the bottoms toward the uplands.

Co-operating with the Department of Justice, representatives of the soil survey furnished expert testimony in a case involving the changing of state boundaries during the past year. A detailed map was made of the soils of the Red River bottoms, in the vicinity of the Burk Burnett oil field, for the purpose of showing the process by which the bottoms were built up, this fact having an important bearing on the settlement of a boundary dispute between Texas and Oklahoma. The question as to whether the land in controversy was formed by accretion or by avulsion would practically decide the issue, and consequently extremely detailed soil maps, profile maps of deep borings, and careful mechanical analyses of material were necessary in order to determine the presence or absence of a gradation from coarse to finer alluvial sediments from the edge of the bottoms toward the uplands.



Look for the Cross and Circle printed in red on every genuine package. For sale at all good stores handling paints.



Alabastine Instead of Kalomine or Wall Paper

Finish new walls with Alabastine, the wall coating particularly adapted for use over plaster or wall board and is always artistic and sanitary.

Redecorate the old home with Alabastine because it can be applied over any interior surface—new or old. There will be no disappointment, no expensive mistakes to correct if you use

Everybody Pleased. A young lady at a crowded seaside resort was explaining to a circle of admirers: "Yes, it was dear mamma's birthday, yesterday. I gave her a crimson parasol, with broad white stripes. She is so pleased! And so am I. Mamma is pleased to have a new parasol, and I am pleased because now I can see her coming a long way off."

Taking It Home. "What have you there?" "All the latest scandal. The New York Blurb."—Louisville Courier-Journal.

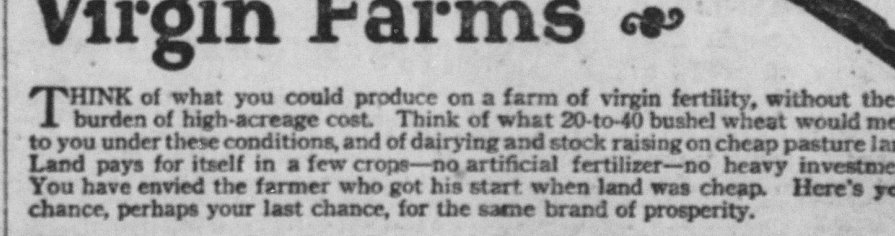
What Every Hubby Knows. Wife—What do you know about women's clothes? Hubby—The cost.

In the Morning. From Virginia there comes a story of a very fat guest in an overcrowded hotel who was forced to spend the night on a wire cot minus blankets and mattress.

When he came down in the morning the clerk asked him: "Well, how did you sleep last night?" "Oh, I slept all right," the fat person assured him, "but I certainly looked like a waffle when I got up this morning."

The greatest thing in the world is for a man to know how to be his own.—Montaigne.

Why do so many men get peevish whenever they hear about the late G. Washington's veracity?



Canada Offers "Last Chance" for Virgin Farms

THINK of what you could produce on a farm of virgin fertility, without the burden of high-acreage cost. Think of what 20-to-40 bushel wheat would mean to you under these conditions, and of dairying and stock raising on cheap pasture land. Land pays for itself in a few crops—no artificial fertilizer—no heavy investment. You have envied the farmer who got his start when land was cheap. Here's your chance, perhaps your last chance, for the same brand of prosperity.

Western Canada— Your Opportunity!

Western Canada is the farmer's land of opportunity. Thousands of settlers who started not many years ago with little or nothing, are today the owners of fine farms, with comfortable homes and barns, thoroughbred stock, dairy herds—all the marks of prosperity. Yet land is not dear—only \$15 to \$20 an acre for rich, virgin, prairie convenient to railroads. Land is not dear in Western Canada—yet—because there is so much of it. But many settlers are expected in 1923, and now is your opportunity, before the best farms are taken. Get started. Taxes are reduced, not raised, on land brought under cultivation. On farm buildings, improvements, machinery, personal effects, automobile, etc., there is no tax at all. Canada wants workers—it wants its land farmed—and the farmers, through their municipal councils, have practical control of all local taxation.

Special Renter's Plan— Buy Out of Profits

To aid and encourage the honest worker with perhaps little capital, the Canadian Government has a "Renter's Plan", whereby one may work a new or improved farm—try it out—for several years if desired—and buy a farm of his own out of profits.

Thirty-Two Years to Pay

For the benefit of those wishing to buy land, a national non-profit sharing organization—the Canada Colonization Association—has been established, with head office at Winnipeg, and United States office at St. Paul. This Association offers selected land convenient to railroads—much of it at \$15 to \$20 per acre—on very small cash payment; no further payment until third year; balance extended over thirty years, but purchaser may pay up and obtain title at any time, if desired. Interest six per cent.

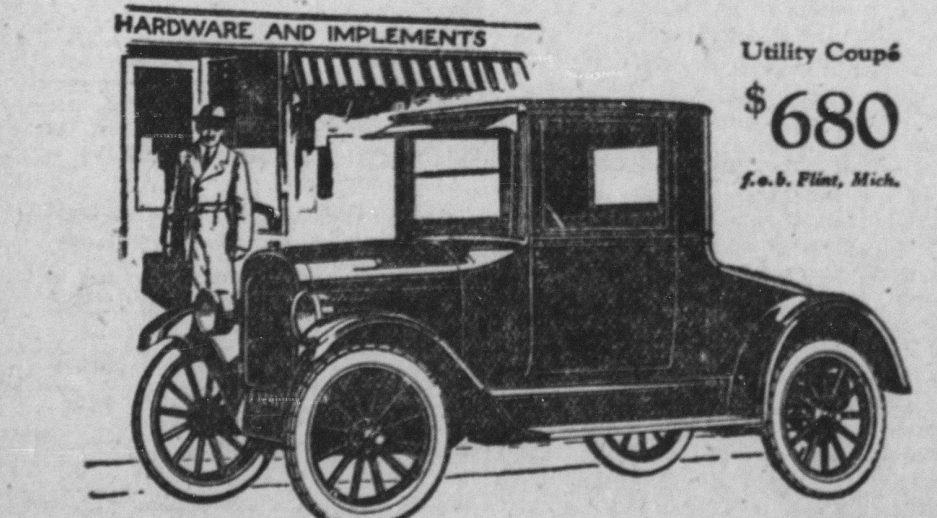
Get the Facts—Costs You Nothing

Mail the coupon to the agent mentioned below, located nearest to you. He is the official representative of the Canadian Government, authorized to give you information and assistance, without charge, and glad to be of service to you.

Mail the Coupon Tell us something of your position, and what you are looking for, and receive descriptive book with maps, and free service of the Canadian Government Agent in your territory; also information how special railway rates can be arranged for a trip of inspection.

F. A. HARRISON
Desk W. 308 N. Second St. Harrisburg, Pa.

Free Homesteads are still available in some localities. Canada welcomes Tourists—come and see our country—No passports required.
Address Nearest Agent: F. A. HARRISON, Desk W. 308 N. Second St. Harrisburg, Pa.
Agent Department of Inspection—Please send me your free book on:
Western Canada
Mining
Cattle Raising
Stock Raising
Special Railway Rates
Name _____
R. F. D. No. or St. Address _____
P. O. _____ State _____



The Practical Man's Car

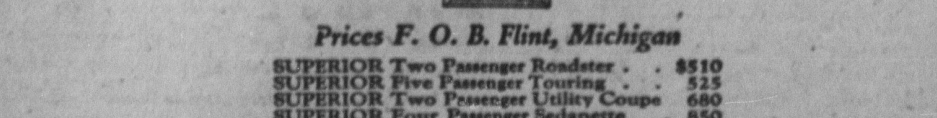
The quick success of the Chevrolet Utility Coupé has proved how accurately its designers gauged the transportation requirements of the average busy man.

This fully equipped, modern car combines day-by-day reliability, remarkably low operating costs and the lowest price asked for a Fisher Body automobile.

The mammoth rear compartment is especially attractive to the man who is always moving tools, sample cases, repair parts for farm machinery, and luggage of all sorts.

Any Chevrolet dealer will be glad to show you its exceptional engineering features.

for Economical Transportation



Prices F. O. B. Flint, Michigan
SUPERIOR Two Passenger Roadster . . . \$510
SUPERIOR Five Passenger Touring . . . 525
SUPERIOR Two Passenger Utility Coupé . . . 680
SUPERIOR Four Passenger Sedanette . . . 850
SUPERIOR Five Passenger Sedan . . . 860
SUPERIOR Light Delivery . . . 910

Chevrolet Motor Co., Detroit, Mich.
Division of General Motors Corporation

10c Gives Old Capes Glow of New

Putnam Fadeless Dyes—dyes or tints as you wish