

After Every Meal

WRIGLEY'S

helps the stomach.

After a hearty meal, try its friendly relief and comfort to the over-burdened stomach.

It is the beneficial and satisfying sweet for old and young.

And the cost is very small.

Try the New P. K.

The Flavor Lasts

Adds a Zest—Helps Digest

MASH INCREASES EGG PRODUCTION

Beltsville Farm Obtains Best Results With Meat Scrap, Ground Oats and Wheat Bran.

FOWLS KEPT IN CONDITION

Gluten Meal Seems to Be Best Among Vegetable Proteins for Poultry—Tests Show Fish Meal to Be Particularly Good.

(Prepared by the United States Department of Agriculture.)
The best mash for stimulating egg production in hens of the general-purpose breeds, such as the Plymouth Rocks and Wyandottes, according to experiments carried on by the United States Department of Agriculture, is



Early Hatched Plymouth Rock Pullet.

one that is not so rich in cornmeal and meat scrap as those frequently fed to Leghorns. On the department's poultry farm at Beltsville, Md., the best results with general-purpose hens were obtained with a mash containing only 18 per cent of meat scrap with considerable ground oats and wheat bran. The entire mixture is made up in the proportion of three parts of corn meal, one part of bran, one and one-half parts of meat scrap, one part of middlings, two parts of ground oats, and 5 per cent of linseed meal. As a result of using this feed the hens produced a good yield of eggs, but did not become overfat and were in good breeding condition.

Ration for Leghorns.

Leghorns and other breeds of the same type can use a heavier and more stimulating ration without endangering their physical condition and the hatching quality of the eggs. The mash that has been giving the best results with the department's Leghorn flock is made up of four parts bran, four parts middlings, 66 parts corn meal, and 26 parts of meat scrap. Barred Plymouth Rock pullets fed on this heavy mash laid a few more eggs than pullets of the same breed fed on the first mash, but they suffered in health and their eggs were lower in fertility.

Vegetable Proteins.

Among the vegetable proteins fed to poultry, the department has found that gluten meal seems to be the best, although cotton seed and peanut meal are very satisfactory if supplemented with animal protein in the form of meat scrap, tankage, fish meal, or milk, and with mineral salts. For good results the vegetable proteins should not exceed 10 per cent of the total mash. Tests have shown that a good grade of fish meal is practically as good as meat scrap or high-grade tankage.

TUBERCULOSIS ON DECREASE

Prospect for Ultimately Ridding Country of Disease Looks More Promising Than Ever.

The plan for eradicating tuberculosis in cattle from entire areas, such as counties, is daily growing in popularity, according to reports coming to the United States Department of Agriculture. The idea has taken hold in Michigan and is spreading rapidly. Already five counties have been freed of the plague and reports from the inspector in charge for the government show that the boards of supervisors have appropriated money and made provision for co-operating with state and federal forces. When one county joins the ranks for eradication its action stimulates others to follow. The prospect for ultimately ridding the country of the disease never looked so promising as at present, say those in charge.

FEEDING VALUE OF ALFALFA

Surpasses Cowpeas, Soy Beans or Clover, Partly Because It is More Palatable.

Well-cured alfalfa has a higher feeding value than hay from any of the grasses. It has a greater feeding value than cowpeas, soy beans or clover, partly because it is more palatable. Experiments have shown that it is nearly equal to wheat bran and an economical substitute for high-priced protein concentrates. Hay made when the alfalfa is in full bloom is best for cattle, sheep and horses, but hogs and poultry find it too coarse and make considerable waste unless fed on hay cut in the earlier stages of bloom when stems are finer.

BENEFICIAL EFFECT OF SULPHUR SPRAYS

Quick Results From Field Demonstration in New Jersey.

Returns From Potato Crop in New Jersey Had Been Greatly Reduced on Account of Scab—Crop Now Clean.

(Prepared by the United States Department of Agriculture.)

A good example of quick results in the improvement of a farm practice following demonstration work by the United States Department of Agriculture and the state was found recently on a New Jersey potato farm, where the returns from the crop in the last few years had been greatly reduced on account of scab. The department and the state put on a demonstration on this farm last year to show the beneficial effect of the use of sulphur in preventing this disease in this region. On one part of the field, according to the owner, where no sulphur was used the tubers were hardly good enough for hog feed.

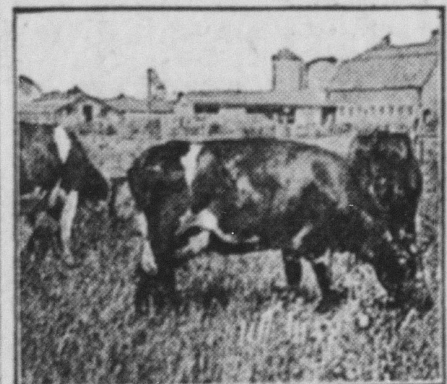
This year, as a result of the lesson brought out in the different parts of the field, the entire field produced a good clean crop. To be on the safe side the grower applied 600 pounds to the acre. Where the scab had been worst last year there was no disease at all and the yield, estimated by digging a large number of hills, was ascertained to be 300 bushels of clean potatoes to the acre.

In the demonstration conducted last year three different quantities of sulphur were used—at a rate of 150, 300, and 600 pounds to the acre. The first gave practically no control, the second about 60 per cent reduction, and the third practically complete. In this work flowers of sulphur, or sulphur dust, was used.

PROTEIN FEED IS ESSENTIAL

Alfalfa is Especially Adapted to Profitable Flow of Milk From Dairy Cows.

Dairy cows require high-protein feed to give a profitable flow of milk. Alfalfa is especially suited to this and is much cheaper than protein concentrates fed with non-leguminous rough-



Alfalfa is Very Palatable.

age. It is estimated that a dry cow will eat 20 to 25 pounds of alfalfa a day and a milking cow 25 to 30 pounds. Alfalfa is cooling, laxative, and very palatable. When alfalfa is used instead of concentrated feeds, the cost of production is cut down.

FILL SILO WITH BEET TOPS

Important That Dirt and Sand Be Eliminated—Well-Built Structure is Safe.

A good crop of beets will yield from 3½ to 6 tons of processed silage. The average cost of gathering the tops and filling, packing, and finishing the silo is about \$1 a ton. It is extremely important that the tops be gathered and put into small piles promptly after the beets are topped. The dirt may be easily shaken from the tops while the leaves are still fresh. It is imperative that dirt and sand be eliminated. The same structure that is commonly used for putting up corn silage may be used for beet-top silage. Because beet tops pack in a very dense mass, the structure will sometimes crack and spread and thus allow air to enter. A well built silo is reasonably safe.

FEED FOR FATTENING STOCK

Addition of Alfalfa to Ration for Cattle Gives Better and More Profitable Gains.

Experiments of the United States Department of Agriculture have shown that alfalfa added to a ration for fattening cattle or young growing stock gives better and more profitable gains. Compared with hay from sorghum and the grasses, alfalfa has consistently given the best gains. There seems to be little difference in the results given by the alfalfa or clover and other legumes, but alfalfa is more palatable and is more readily and completely consumed.

ESTIMATE MARKETING COST

Whether Sold Through Commission Man or Growers' Association There is Expense.

Do not forget that it costs something to sell farm products. Whether you sell or your merchant, commission man or growers' association sells, there will be cost. You can't get service for nothing. Whatever your plan may be, estimate the cost and pay what is necessary for economical marketing.

Madam, Raisins Cost Less Now

So Get Their Benefits and Their Flavor in Scores of Attractive, Money-Saving Foods

DUE to greatly increased crops, even though production costs are still much higher than in pre-war days, raisins now cost almost as little as before the war.

Use this luscious, energizing, healthful food lavishly, therefore, in scores of "plain foods" like rice pudding, boiled rice, bread pudding, Indian pudding, and in cake, cookies, pie, and with the children's cereals, to give them "luxury flavors" at "plain food" costs.

Raisins are both good and good for you.

So take advantage of these lower prices now.

Sun-Maid Raisins

Seeded—Seedless—Clusters

Packed under most sanitary conditions in fresh, clean cartons. Very highest quality. Insist on Sun-Maid Brand, the kind that you know is good.

New 11 oz. Package

Your retailer should sell you Sun-Maid Seeded and Seedless Raisins in 11 oz. packages for not more than 15c.

Not More Than 15c

Your retailer should sell you Sun-Maid Seedless Raisins in 15 oz. red packages for not more than 18c.



Not More Than 20c
Your retailer should sell you Sun-Maid Seeded Raisins in 15 oz. blue packages for not more than 20c.



In the Cradle.
"Isn't the baby beautiful?"
"Yes; my wife expects movie offers any day now."

More than we can use is more than we want.

KILL RATS TODAY



By Using

STEARNS' ELECTRIC PASTE

It also kills mice, cockroaches, water bugs and ants. It forces these pests to run from building for water and fresh air. A 3½c box contains enough to kill 50 to 100 rats or mice. Get it from your drug or general store dealer today.

READY FOR USE—BETTER THAN TRAPS

Stockings.
The long stockings formerly worn were called hose; when knee-breeches were introduced the breeches were called upper-stocks and the lower part nether-stock or stockings. The knitted stocking originated in Italy; it was first brought to England by William Rider in 1564. Woven stockings were devised by William Lee, of St. John's college, Cambridge, in 1599.—Exchange.

For speedy and effective action Dr. Peery's "Dead Shot" has no equal. One dose at night on going to bed will clean out Worms or Tapeworm by morning. If you cannot obtain it in your neighborhood send 5¢ cents to 212 Pearl St., New York City.—Advertisement.

Truth is the touchstone of all genius.

Ostentatious meekness is a form of egotism.

A million men have turned to One Eleven Cigarettes—a firm verdict for superior quality.

111

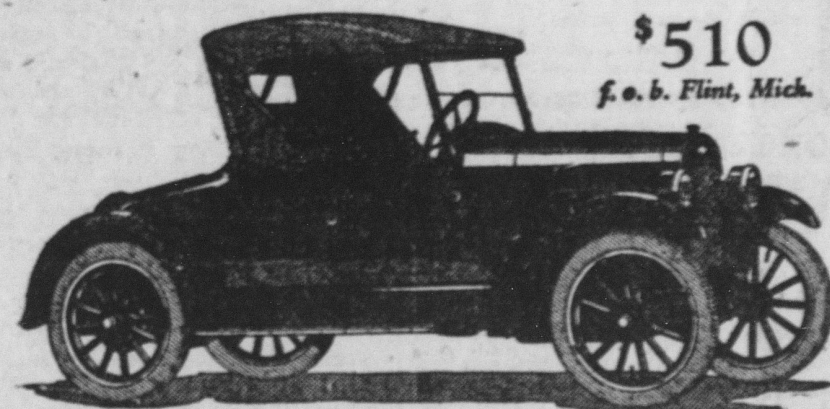
cigarettes



15 for 10c

The American Tobacco Co.

10c Changes Last Year's Frock to New Putnam Fadeless Dyes—dyes or tints as you wish



\$510

f. o. b. Flint, Mich.

1923 SUPERIOR Chevrolet Roadster

This car averages the lowest operating cost per mile. It has style, finish and equipment that completely outclasses all competition in its field. It is the ideal car for daily use by farmers, salesmen, business or professional people, and all who want the most economical transportation for one or two passengers, with ample rear compartment for samples, luggage, etc.

QUALITY has been still further improved by more artistic design and added improvements.

ECONOMY has been still further increased by engineering refinements and greatly broadened production and distribution facilities.

SERVICE is now offered on a flat rate basis by 10,000 dealers and service stations.

PRICE remains the same, in spite of added equipment and more expensive construction, which have greatly increased value.

Some distinctive features of the new line are: streamline body design with high hood and crowned, paneled fenders; vacuum feed and rear gasoline tank on all models; drum type head lamps with legal lenses. Curtains open with doors of open models.

Closed models have Fisher Bodies with plate glass Ternstedt regulated windows, straight side cord tires, sun visor, windshield wiper and dash light. The Sedanette is equipped with auto trunk on rear.

See these remarkable cars. Study the specifications.

Prices F. O. B. Flint, Michigan

SUPERIOR Two Passenger Roadster	\$510
SUPERIOR Five Passenger Touring	525
SUPERIOR Two Passenger Utility Coupe	680
SUPERIOR Four Passenger Sedanette	850
SUPERIOR Five Passenger Sedan	860
SUPERIOR Light Delivery	510

Nothing Compares With



for Economical Transportation

Chevrolet Motor Company, Detroit, Michigan

Division of General Motors Corporation

World's Largest Manufacturer of Low-Priced QUALITY Automobiles. There are 10,000 Chevrolet Dealers and Service Stations Throughout the World. Dealers and Parts Depots Wanted in all territory not adequately covered.