

### BOWRON SOUGHT RELIEF 40 YEARS

Tanlac Restores Los Angeles Man to Splendid Health After Everything Else Had Failed.

"Tanlac has done me more good than all other medicines and treatments combined, and that's saying a great deal, for I was a sufferer from indigestion forty years and have tried every kind of medicine that came my way," said R. H. Bowron, 1035 W. 17th St., Los Angeles, Cal.

"I could hardly stand the bad spells I frequently had with my stomach. I was weak and nervous, had no appetite, and I felt miserable generally. Nothing I took gave me more than temporary relief and I gradually grew worse.

"About two years ago Tanlac put me in splendid condition and it has been my standby ever since. Whenever I get to feeling a little off, a bottle or two puts me in fine shape. I eat heartily now, sleep fine, have no distress after meals, and, in fact, am enjoying splendid health. Tanlac is just the thing for those who suffer as I did."

Tanlac is sold by all good druggists.

#### Twilight.

Twilight is made possible by the earth's atmosphere and its power to reflect the sun's rays. For a certain time after the sun has disappeared below the horizon the sun's rays pass through the earth's atmosphere at such an angle that the light rays are reflected and refracted.


**You'll Like**



**EXCELLO SUSPENDERS**

Year's wear guaranteed. No rubber. No sharp brass. Springs give the stretch. Comfortable. Easy on buttons. If you prefer heavy suspenders, direct, spring to the same. No New Stretch Suspenders. **EXCELLO** Suspenders.

**Clear Your Complexion with This Old Reliable Remedy—**



**HANCOCK SULPHUR COMPOUND**

For pimples, black-heads, freckles, blotches, and all skin eruptions, hives, eczema, etc., use this scientific compound of sulphur. As a lotion, it soothes and heals; taken internally, a few drops in a glass of water—it gets at the root of the trouble and purifies the blood. Physicians agree that sulphur is one of the most effective blood purifiers known. Remember, a good complexion isn't skin deep—it's health deep.

Be sure to ask for **HANCOCK SULPHUR COMPOUND**. It has been used with satisfactory results for over 25 years.

**60c and \$1.20 the bottle**

at your druggist's. If he can't supply you, send his name and the price in stamps and we will send you a bottle direct.

**HANCOCK LIQUID SULPHUR COMPANY**  
Baltimore, Md.

Hancock Sulphur Compound. Contains 25 and 50¢ for use with the Liquid Compound.

**USEFUL** for all the little ailments—bumps, bruises, sores, sunburn and chafing. Keep a bottle in the house. It's safe and pure. It costs very little.

**CHESEBROUGH MFG. CO.**  
(Consolidated)  
State Street New York



**Vaseline**

PREPARED BY CHESEBROUGH MANUFACTURING COMPANY  
NEW YORK, N. Y.

**Dr. Kellogg's Asthma Remedy**

for the prompt relief of Asthma and Hay Fever. Ask your druggist for it. 25 cents and one dollar. Write for FREE SAMPLE.

**Northrop & Lyman Co., Inc., Buffalo, N. Y.**

**Pimples Vanish!**

Blackheads, pimples and other skin eruptions quickly disappear—the skin becomes soft, smooth, clear and delightfully refreshed.

when you use **Glenn's Sulphur Soap**

Contains 35% Pure Sulphur. At Druggists.

**Robland's Egyptian Cotton, 50c**

### LUBRICATION IS MOST ESSENTIAL

Highest Grade and Correct Maintenance of It Are Necessary for Smooth Control.

#### NEED OF SIMPLE PRECAUTIONS

Choice of Particular Oil is for Competent Engineer to Make—Four Basic Factors Affected by Design of Engine.

The correct lubrication of an automobile, truck or tractor motor depends on the following three conditions, all within the control of the operator: The use of lubricating oil of the highest quality; the use of the correct grade of this high-quality oil to meet the engine operating conditions exactly; proper precautions to maintain the quality of the lubricant while in service and to make adjustments to insure its delivery in exactly the correct quantities to the friction surfaces.

Failure of the operator to give the necessary attention to any one of these conditions may result in impaired performance. The lubricant plays a vital part in insuring smooth, regular operation and the maintenance of power output at its maximum; or increased operating costs. Repairs due to incorrect lubrication are frequent and costly. Also, the use of the wrong oil or the improper use of the correct oil tends to increase fuel consumption, the number of forced stops and the rate of depreciation.

#### Few Simple Precautions.

With so much dependent on the correct lubrication of your engine, it would be unwise to neglect the few simple precautions necessary to insure the very best of results.

The choice of the correct oil for any particular engine is a matter for a competent engineer. It involves the following four basic lubricating factors affected by engine design:

First—Engine operating temperature depends primarily on the service or "loading" of the engine. The steady, uninterrupted, almost full-load work of the tractor engine determines high temperatures as contrasted with the intermittent, variable-load work encountered by the truck or passenger car engine. The engine size, the capacity of the cooling system and the fuel used are some of the other features of design which have a bearing on operating temperatures. As all oil tends to lose body or thin out under heat we are naturally influenced toward the use of heavier-bodied oils where operating temperatures are high.

#### Distribution of Oil.

Second—Oil distribution. The ability of the lubricating system to distribute the oil to all friction surfaces where the lubricant is chilled and thickened determines how fluid the correct oil must be. In other words this feature of engine design is the limiting factor with respect to oil body.

Some lubricating systems are adapted for perfect circulation of all oils from the heaviest-bodied to the lightest; others function best on oils of light or medium body.

The correct oil is of such body as to perfectly distribute through the system of lubrication provided at all atmospheric temperatures likely to be encountered in service.

#### Not All Burn Equally Well.

Third—Carbon formation. Not all oils are equally clean-burning, nor are all engines equally "sensitive" to the harmful effects of carbon formation. The correct oil will be of such character as to minimize carbon formation and the troubles which result from such deposit.

Fourth—Seal for piston rings. The correct oil will be of ample body and correct character to seal the piston rings against passage of the highly compressed gases on the compression and power strokes. Such sealing is essential to conserve power, increase fuel economy and forestall excessive dilution of the oil supply with fuel and contamination by water and other foreign substances. Plainly, the subject is an intricate one, the subject with which the average operator is at a disadvantage.

### BENT PEDALS QUITE CONVENIENT ON CAR

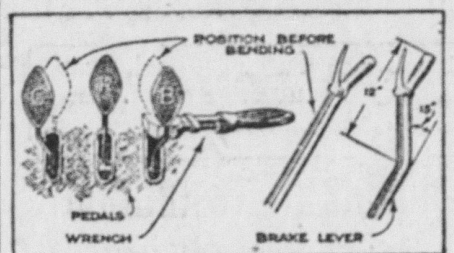
Clutch, Reverse and Brake Are Usually Too Close.

Driver Finds It Impossible to Place Foot in Easy Position on Any of Pedals—Monkey Wrench Will Remedy Matters.

The too close placing of the clutch, reverse and brake pedals of a standard automobile makes it impossible for the driver to place his foot in a convenient position on any of the pedals. By moving the outside pedals farther away from the center, operation is made much easier.

With the floor boards of the car removed, place a heavy monkey wrench about six inches below the pedal pad, as the flat part is called, and bend the outer pedals away from the center one about one-half inch. Then with one wrench applied under the pedal pad, and another on the bent portion, straighten them as indicated in the drawing.

On the same type of car the brake lever is in an awkward position, as it is beyond normal reach of the operator.



Two Outside Control Pedals and the Brake Lever Bent to Facilitate Operation.

For. Bending this lever further expedites operation.

The lever is bent backward, about twelve inches from the top, to make an angle of about fifteen degrees with the lower part, and the handle section is then bent forward until straight. The small rod that operates the ratchet catch is also bent to conform to the contour of the lever. The parts can be bent cold by using suitable leverage.—Popular Mechanics Magazine.

### YOU AUTO KNOW

That a battery is never as efficient in cold weather as it is in warm—owing to a number of causes. In the first place, the battery itself loses some of its power when the temperature is lowered and fails to deliver as much current, even when fully charged, as it will during warmer weather. In addition to this, it is more difficult for the self-starter to turn the engine over when the latter is cold and an extra strain is therefore placed on the battery. Finally, cold weather presupposes shorter days and a greater use of light, another factor which must be taken into consideration.

It is therefore well to pay particular attention to the "heart" of the car during the winter and particularly in the early spring when its vitality is apt to be quite low. Distilled water should, of course, be added at regular intervals—weekly inspections of the water-level in the cells are always advisable—and at least once a year the entire battery should be taken apart and the sediment from the plates cleaned out. If this is done in the spring, the energy created during the summer will usually carry the battery through the succeeding winter without any trouble.

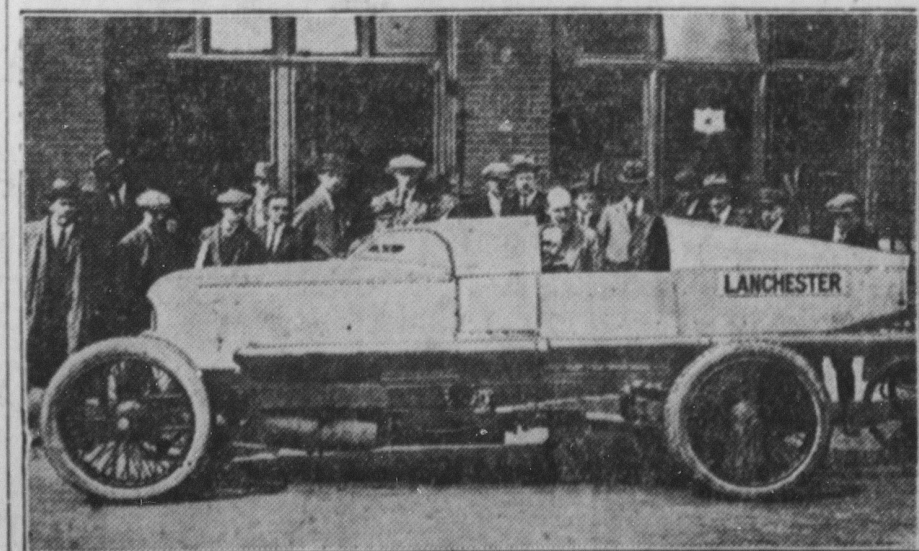
### AUTOMOBILE GOSSIP

A motorist should be as clever in backing a car as he is when driving forward.

Two-thirds of all breakdowns are caused by improper or insufficient lubrication.

A slipping clutch is not only a strain on the engine, but causes waste of power and fuel.

### NOVEL ENGLISH RACING AUTOMOBILE



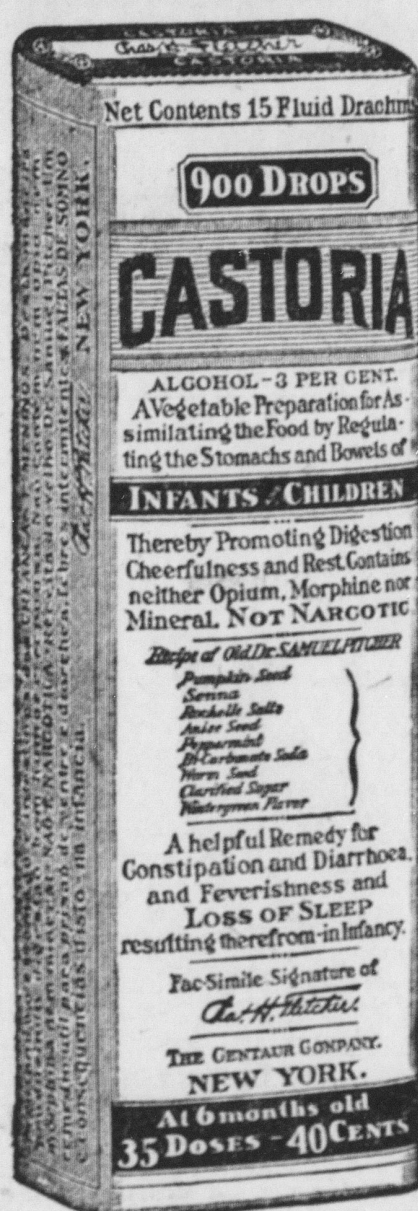
The new Lanchester racing car, which is entered in many of the English auto classics. The driver of the machine is entirely covered in, the machine being constructed along modern and improved plans. A feature of the construction is the series of boxes running from the engine to the tail of the car, through which the hot air is carried off.

## The Young Mother.

THE ILLS OF INFANTS AND CHILDREN should be so well known to the youngest of mothers that a reminder or a repetition of the symptoms of illness seems unnecessary, yet there are some mothers who overlook a feverish condition, a little colic, or a disposition to be irritable. If not corrected they may lead to serious sickness. And to correct them, to bring Baby back to its happy self, is so easy by the use of Castoria—a medicine prepared just for infants and children. It will regulate the bowels (not force them), aid digestion and so bring quiet and rest.

Fletcher's Castoria has been doing this for over 30 years; regulating the stomach and bowels of infants and children. It has replaced the nauseating Castor Oil, so-called Soothing Syrups, poisonous Paregoric and other vicious concoctions in the homes of true and honest mothers—mothers who love their children.

Those mothers will give their babies foods and medicines especially prepared for infants and children.



## Children Cry For Fletcher's CASTORIA

#### A Word About Truth.

"Great is Truth, and mighty above all things." So says the Old Testament, yet it is equally true to-day. Truth shows no favors, fears no enemies.

From the inception of Fletcher's Castoria, Truth has been the watchword, and to the conscientious adherence to this motto in the preparation of Fletcher's Castoria as well as in its advertising is due the secret of its popular demand.

All imitations, all substitutes, all just-as-good preparations lack the element of Truth, lack the righteousness of being, lack all semblance even in the words of those who would deceive.

And you! Mothers, mothers with the fate of the World in your hands, can you be deceived? Certainly not.

Fletcher's Castoria is prepared for Infants and Children. It is distinctly a remedy for the little-ones. The BABY'S need for a medicine to take the place of Castor Oil, Paregoric and Soothing Syrups was the sole thought that led to its discovery. Never try to correct BABY'S troubles with a medicine that you would use for yourself.

MOTHERS SHOULD READ THE BOOKLET THAT IS AROUND EVERY BOTTLE OF FLETCHER'S CASTORIA

### GENUINE CASTORIA ALWAYS

Bears the Signature of

*Chas. H. Fletcher*

THE CENTAUR COMPANY, NEW YORK CITY.

## 10 Cents Gives Cheerful New Color Tone to Old Curtains

PUTNAM FADELESS DYES—dyes or tints as you wish

It never rains but it pours, and when one cloud disappears they all do.

Don't Forget Cuticura Talcum. An exquisite face, skin, baby and dusting powder and perfume, rendering other perfumes superfluous. You may rely on it because one of the Cuticura Trio (Soap, Ointment and Talcum). 25c each everywhere.—Advertisement.

**Kill All Flies!** THEY SPREAD DISEASE. Flies anywhere, DABBY FLY KILLER attracts and kills all flies. Head, chest, abdominal, convenient and cheap. Lasts all season. Made of metal, can't spill or tip over; will not soil or injure anything. Guaranteed.

**FLY KILLER**  
At your dealer or by express, prepaid, U. S.

**HAROLD SOMERS, 100 De Kalb Ave., Brooklyn, N. Y.**

**PARKER'S HAIR BALM**  
Removes dandruff, itching, itching, restores color and beauty to gray and faded hair, and falls out. Also cures itching scalp. H. W. Parker, New York, N. Y.

**HINDERCORNS** Remove Corns, Calluses, etc., stop all pain, restore comfort to the feet, make walking easy. In 10c bottles. H. W. Parker, New York, N. Y.

### VACATION TRIPS

One Way	By Sea Round Trip	Round Trip
\$20.40	BOSTON	\$40.80
18.90	PROVIDENCE	37.80
24.78	SAVANNAH	39.65
30.96	JACKSONVILLE	49.54

Meals and stateroom accommodations on steamer included. Extra charges for preferred space. Through tickets to principal points. Full information on request.

**MERCHANTS & MINERS' TRANSPORTATION CO. S**  
Pier 3 Pratt St. Tel. FLAM 4200  
BALTIMORE

### Men's Shirts

AT WHOLESALE PRICES  
Ask for Samples  
Also Agent Wanted  
**THE SENECA COMPANY**  
145 W. 45th St. New York City

### Liggett & Myers

**KING PIN PLUG TOBACCO**  
Known as "that good kind"  
Try it—and you will know why

### DROPSY TREATED ONE WEEK FREE

Short breathing relieved in a few hours swelling reduced in a few days; regulates the liver, kidneys, stomach and heart; purifies the blood, strengthens the entire system. Write for Free Trial Treatment.

**COLLUM DROPSY REMEDY CO., Dept. B.3., ATLANTA, GA.**

### YOU CAN

color your hair easily, quickly and safely by using Q-Ban Hair Color Restorer. Safe to use as water. Makes you look young again. At all good druggists, 75 cents, or direct from HERRING ELLIS, Chemists, Memphis, Tenn.

Constipation Cured in the Karmol Mail without giving up Government positions. Representatives wanted in unoccupied territory. Karmol Laboratory, 3021 13th St. N. W., Washington, D. C.

PREPARE FOR RAILWAY MAIL CLERK and other Government positions. Price \$3. Bonus \$100. Send today and be convinced. **SHUTTLEWORTH SYSTEM**, 171 West 125th Street, NEW YORK CITY.

**ATLAS PORTLAND CEMENT**

THE last quarter century has seen a big change in things built—a change largely caused by building materials—a change from temporary to permanent structures.

The skyscraper, the efficient factory, the modern home and farm would be impossible as we find them today—without concrete.

The concrete structure safeguards money invested, safeguards life, and safeguards the property of stock it contains. Through the last quarter century, used on all types of building, Atlas Portland Cement has come to be generally known as "the Standard by which all other makes are measured."

**THE ATLAS PORTLAND CEMENT COMPANY**  
Sales Offices: New York—Boston—Philadelphia  
Mills: Northampton, Pa.—Hudson, N. Y.—Leeds, Ala.

**"The Standard by which all other Makes are measured"**