

For State Senator:

34th DISTRICT OF PENNSYLVANIA

HARRY B. SCOTT

Of

PHILIPSBURG, PENNSYLVANIA

1: CLEARFIELD AND CENTRE COUNTIES are the heart of the State of Pennsylvania, embracing many of the great natural resources of our state and require real representation at Harrisburg.

2: CLEARFIELD AND CENTRE COUNTIES have the best people on earth and demand recognition. Why should Philadelphia and Allegheny Counties dictate the legislative policies of our State? We need a man who can "speak out in meeting" for the benefit of his constituents.

3: CLEARFIELD AND CENTRE COUNTIES need a Senator who is experienced in legislative procedure and will know when the things are "being pulled off" that may work to the detriment of these two great counties.

4: CLEARFIELD AND CENTRE COUNTIES need a Senator who can be depended upon to demand and receive respect and attention.

You Can Assure All of These and Many Other Benefits to Yourselves and Your Neighbors
by Voting For

HARRY B. SCOTT

On TUESDAY NEXT—MAY 16th, 1922

SOLDIERS' MONUMENT.

Milesburg Plans for Biggest Time in Bald Eagle Valley.

Milesburg is contemplating an Old Home Week and at that time will unveil the Soldiers and Sailors monument. This monument is being dedicated to soldiers of all wars and it will contain tablet—in memory of those who lost their lives, in honor of those who served in the Revolutionary, Civil, Spanish-American and World wars. The name of Edward Brooks will be among the names to appear on this monument.

The Brooks-Doll post of the American Legion, Bellefonte post, was named in honor. Mr. Brooks was for a time a resident of Boggs township.

It is well to note that Milesburg and Boggs township furnished more soldiers in all wars than any district in Centre county, according to population. They also have furnished some heroes worthy of note.

James J. Lucas, of Boggs township, a commander in the U. S. N., was aboard the U. S. cruiser Santiago, sunk off Fire Island above Sandy Hook, in the German submarine expedition to the U. S. in 1918. Commander Lucas was the last to leave the ship. The big fighting fortress was beached and many were saved. The ship was carrying wounded soldiers from France.

With pleasure we mention the name of Lieut. C. Wilton Smith. In the 110th Inf. of the famous 28th Div., who as an officer in one of four companies who were sent in advance of the line to reconnoitre and learn the position of the enemy very much alive. Facing the Prussian Guards, the flower of the German army, this gallant little band fought bravely and held at bay their noted adversaries who outnumbered them by a large margin, until the main force of the fighting 28th arrived on the scene and never stopped the advance until the Argonne was reached on November 11th, 1918.

Not only did Milesburg and Boggs township furnish more than their quota to all wars, but never fell down on any assessment on war drives, "Going over the top" on every drive. In Milesburg district in the last bond drive, the quota was \$10,000. They reached the high mark of \$27,000, going over the top by more than 150 per cent.

As they are unveiling one of the finest pieces of statuary in the Commonwealth, the citizens of Centre county should turn out at the unveiling to be held some time this summer

and show their appreciation to Milesburg and Boggs township for what they have done in their answers to their country's calls and a compliment to them for erecting one of the finest monuments in this section of the state.

The monument will be erected complete in two months. The following arrangements have been made to date:

The Governor and staff of Pennsylvania; the Adjutant General and staff, have been secured to attend the unveiling. There is powerful influence at work in Washington to secure the presence of Gen. John J. Pershing. A regiment of cavalry has been secured and arrangements made with a moving picture concern to take scenes of the unveiling exercises. A broadcasting station is to be erected temporarily to scatter the speeches within a radius of 500 miles, as well as music by the famous Wetzler Boys' band, which will be sent by radio to Chicago, Detroit, Pittsburgh, Philadelphia, Washington, New York City and

Senectady.

All is set for the biggest day in the history of the Bald Eagle valley and 20,000 persons are expected.

POLITICAL ADVERTISEMENT

To the Democrats of Centre County:

Vote for F. E. NAGINBY

Next Tuesday. A man who has had years of experience in business and will represent you as to State business, and guard your interests. One who will have no boss.

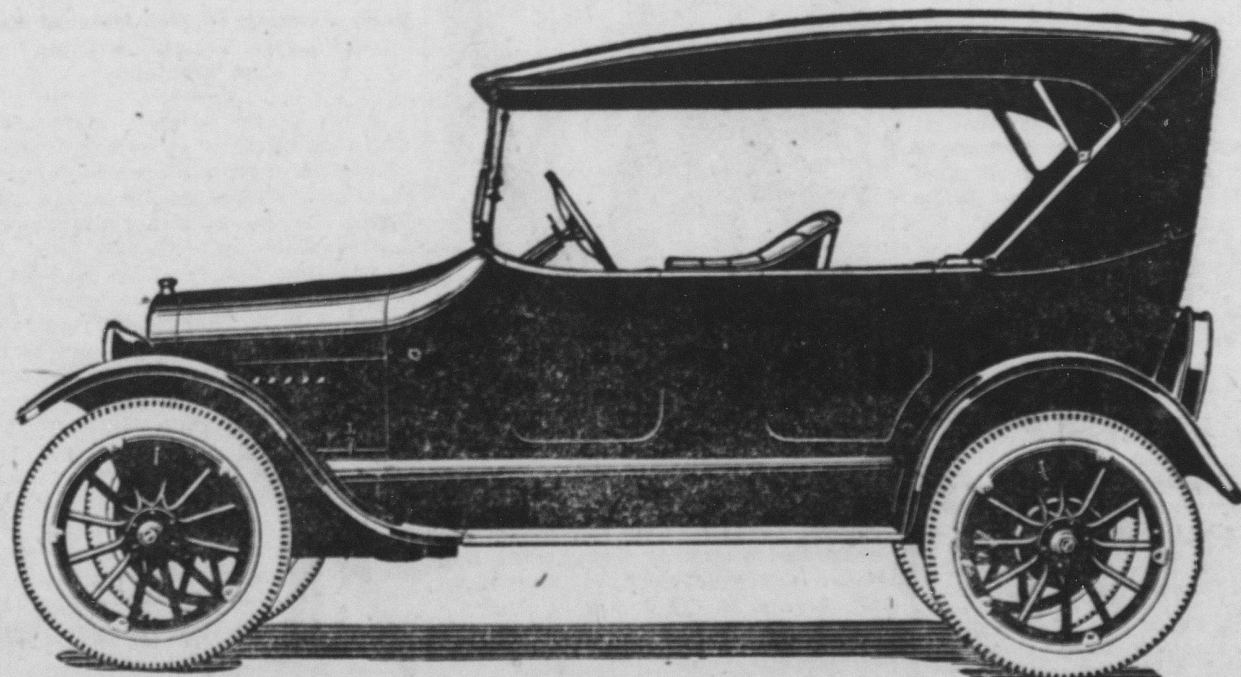
.. An Announcement ..

A First-Class
Up-to-Date

PLANING MILL
IN FULL OPERATION

Cresson Lumber Co.
STATE COLLEGE, PA.
J. G. MARKS, Sec. and Treas.

Superior Chevrolet Features



\$525 F. O. B. DETROIT

FRONT AXLE

- 1—Steering knuckles have been provided with large grease cups mounted on the side of the barrel. This insures positive lubrication to upper and lower bushings.
- 2—Hard rolled bronze steering knuckle bushings reduce wear. They will not "rust up."
- 3—Steering knuckle king bolts have been made larger—from one-half to nine-sixteenth inch diameter. This gives larger bearing surface, insuring longer life.
- 4—Steering plain arms have been redesigned, having a heavier section and made with a tapered shank where they attach to the steering knuckle. This increases its strength.
- 5—Tapered roller bearings are used in front wheels—reducing friction.

CLUTCH

- 1—Transmission supports are drilled in position on each motor and held firmly with heavy drive fit bolts and

dowels securely locked. This insures positive alignment of clutch and transmission, preventing slipping or breaking of clutch cones.

- 2—The service brake has been removed from the clutch pedal, making it only function the operation of the clutch. This removes all the strain of the braking action from the clutch and insures positive engagement.

BRAKES

- 1—The service brake has been connected to the former emergency brake pedal. A longer lever has been placed on the axle, which increases the leverage, giving greater braking action.
- 2—The emergency brake has been connected to a hand lever mounted on brackets attached to the transmission case. The latch and sector are of heavy construction, insuring that the brake will remain "set" until released by hand.

REAR AXLE

- 1—Heavy spiral ring and pinion gears are used, eliminating breakage and insuring quiet running.
- 2—The pinion gear is provided with a hub which fits into a heavy duty annular bearing. This gives support to the gear at a point where it is most needed.
- 3—The length of the taper on the propeller shaft has been increased, insuring positive locking of pinion gear.
- 4—An improved propeller shaft thrust bearing is used to carry the driving thrust.

SPRINGS

- 1—The front and rear springs have been regarded to give easier riding.

ASSEMBLY

- 1—New and improved methods of assembly have been devised, which insure positive inspection of all assembly operations.

Spring Mills **DECKER MOTOR CO.,** State College

BELL AND COMMERCIAL PHONES