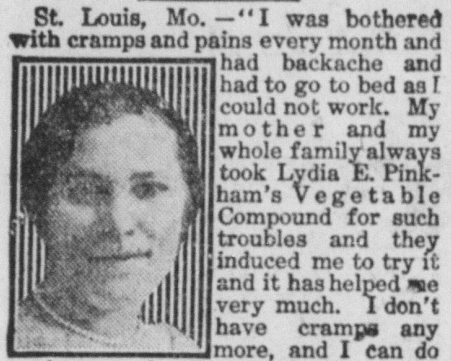


CRAMPS, PAINS AND BACKACHE

St. Louis Woman Relieved by Lydia E. Pinkham's Vegetable Compound



St. Louis, Mo.—"I was bothered with cramps and pains every month and had to go to bed as I could not work. My mother and my whole family always took Lydia E. Pinkham's Vegetable Compound for such troubles and they induced me to try it and it has helped me very much. I don't have cramps any more, and I can do my housework all through the month. I recommend your Vegetable Compound to my friends for female troubles."

TOO LATE

Death only a matter of short time. Don't wait until pains and aches become incurable diseases. Avoid painful consequences by taking



The world's standard remedy for kidney, liver, bladder and uric acid troubles—the National Remedy of Holland since 1896. Three sizes, all druggists.

Look for the name Gold Medal on every box and accept no imitation



TO KILL RATS

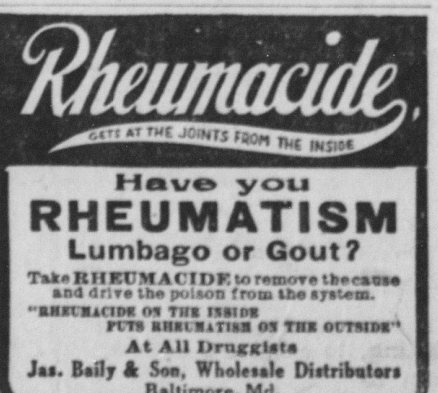


Always use the genuine STEARNS' ELECTRIC RAT & ROACH PASTE. It forces these pests to run from the building for water and fresh air.

Garfield Tea

Was Your Grandmother's Remedy

For every stomach and intestinal ailment. This good old-fashioned herb home remedy for constipation, stomach ills and other derangements of the system so prevalent these days is in even greater favor as a family medicine than in your grandmother's day.



DROPSY

TREATED ONE WEEK FREE. Short breathing relieved in a few hours, swelling reduced in a few days; regulates the liver, kidneys, stomach and heart; purifies the blood, strengthens the entire system. Write for Free Trial Treatment.

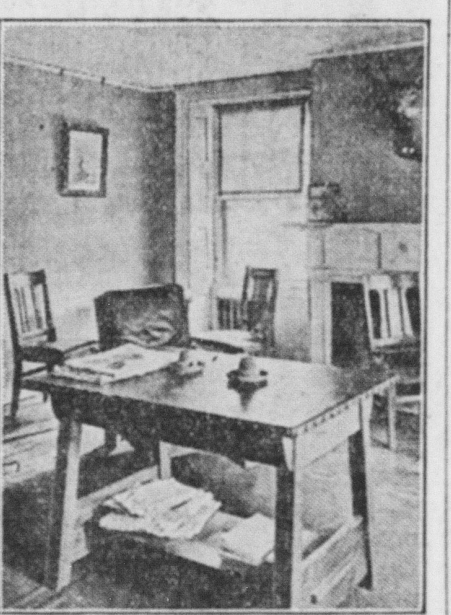
RURAL BUILDING AIDS COMMUNITY

Many Advantages Are Outlined in Financing Proposition by Popular Subscription.

STUDY MADE BY SPECIALISTS

By Far the Greatest Number of Structures Are Erected Through the United Effort of People Most Interested.

(Prepared by the United States Department of Agriculture.) To assist rural organizations in working out ways of financing and maintaining community buildings, the United States Department of Agriculture has just published Farmers' Bulletin 1192, The Organization of Rural Community Buildings. This is the third of a series of bulletins on rural community buildings, based on an intimate study made by specialists of the department of more than 200 such buildings in all parts of the country.



Public Reading Room, Holden (Mass.) Community House—This is but one of many attractively furnished rooms in this building.

eral principles involved, and tells the story in detail of the erection, financing, management and use of a few representative types; the second, Farmers' Bulletin 1173, Plans of Rural Community Buildings, gives the floor plans of 21 buildings of the better class, illustrating various types.

Methods of Financing. It is pointed out in this third bulletin that though community buildings are financed in a number of ways, as individual donations, local industry, well-established social or fraternal organizations, by far the greatest number are erected through the united effort of interested people and various organizations of the community.

Financing a building by general voluntary contributions is suggested as perhaps the simplest, quickest and most elastic way, while incorporated stock associations furnish more of the elements of financial permanency. The community method of financing has a number of advantages: (1) People are devoted to that to which they voluntarily subscribe; (2) this method develops community co-operation, promotes union, and decreases antagonisms through the necessity of different organizations and factions working together in a financial campaign; (3) as the money is voluntarily given from private funds, the people are enabled to make experiments in the building which they would hesitate to make with public funds or those of an individual or club; (4) those who pay, control. Only a high type of citizenship subscribes to an institution of this kind and thus public spirit at its best is in control.

Community Buildings. In recent years there has been a growing movement in the erection of community buildings by the municipality through taxation. This method also has its distinct advantages. Maintenance expenses of community buildings are met by dues, fees, rentals and receipts from entertainments, profits and concessions. Some of the best organizations maintain their buildings entirely by annual dues. In the case of buildings financed by an individual or by an industrial concern, a community association is generally formed which guarantees the maintenance of the building as a condition of the donation.

Most community associations which finance their buildings by issuing stock, incorporate under the state laws in order that they may have a more effective instrument for buying, selling and holding property. To guide such associations, copies of articles of incorporation, constitutions and by-laws now in use by a number of well-established organizations are included in the bulletin. State laws relating to municipalities and counties erecting buildings are also given. Copies of the bulletin can be obtained free on application to the United States Department of Agriculture, Washington, D. C.

PROMPTNESS ADVISED IN SHIPPING HIDES

Advice Is Particularly Applicable to Sheepskins.

Sell Direct to Tanners, Thus Eliminating Middleman or Agents—Repeated Handling Tends to Reduce Quality.

After country hides and skins have been properly and securely bundled and tagged ship them to market without delay, advises the United States Department of Agriculture. Do not let the bundle remain in the sun, drafts or water, or against rusty or corroding metals. Promptness in shipping and delivery is always advisable, but applies particularly to sheepskins. They heat rapidly after being bundled, and in hot weather especially must reach their destination quickly.

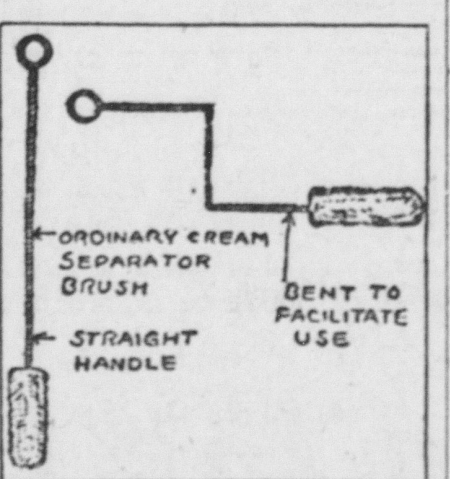
Hides and skins should be shipped as directly as is practicable and economical to reliable dealers who sell direct to tanners, thus eliminating unnecessary middlemen or agents. Repeated handling tends to reduce the quality of hides and skins. For most farmers, ranchers and small butchers it would be desirable if they could dispose of their hides and skins immediately after removal, without salting and curing them, but this is generally impracticable, since only a few are near enough to tanneries or dealers equipped to handle their products.

Whenever thus favorably situated, producers find it both profitable and practicable to sell the hides and skins in the green, unsalted condition. In no case, however, should this method be considered unless the producer is certain that the green hides and skins will be delivered promptly. As a rule, 24 hours after skinning is the maximum time advisable.

BENDS IN SEPARATOR BRUSH

Straight Handle Is Inconvenient and Requires Much Twisting of the Wrist.

The wire bristle brush which is used to clean certain parts of the average cream separator is straight and to do a thorough job requires lots of bending of the wrist. By making two



Bends in Brush Make It Quite Easy to Clean Parts of Cream Separator.

right-angled bends near one end, thus forming a sort of crank, it will be found that the brush can be used to greater advantage than before. Cut off the loop in the end and operate the brush by turning the handle as a crank.—Farm and Home.

BIG INCREASE FROM SHEEP

Yields of lambs and wool depend largely upon the breed of sheep selected. With ewes of any one of the medium-sized mutton breeds, the United States Department of Agriculture points out that 115 per cent of lambs can be raised, and 150 per cent is not infrequently reached. The wool clip varies from seven to eleven pounds per ewe. The larger mutton breeds yield more, as do also the fine wools, but the value per pound of the latter has in normal times been less on account of the greater proportion of grease. In comparison with cattle and swine, sheep can be made to yield practically the same net returns on the value of the land, if well cared for, and if kept on lands reasonably well adapted for sheep raising.

BUY FARM THAT IS EQUIPPED

Gives Newcomer Chance to Work Out Changes and Assures Self-Sustaining Business.

Often it is a distinct advantage when buying a farm to purchase the equipment, live stock and materials already on the place. In this way, the United States Department of Agriculture points out, an income is obtained almost from the outset, which usually makes possible the operation of the farm without a loss, and thus gives the newcomer a chance to work out changes and plans at the same time have a self-sustaining farm business.

If only the bare farm is purchased it usually takes some time to supply all the equipment and live stock and put the place on a paying basis. In the meantime overhead costs and other expenses amount to a large item. Hence the advantage that so often is gained in buying a farm that is a going concern.

CARBON MONOXID WORKS QUICKLY

Open Season for Fatalities Resulting From Inhaling Exhaust Gas of Engines.

GRADUAL INCREASE IN DEATHS

Running of Motorcar in Closed Garage for Testing or Warming Up Is Dangerous Practice, According to Scientists.

With the onset of cold weather comes the open season for fatalities resulting from carbon monoxide poisoning by inhalation of the exhaust gas of automobile engines running in small, closed garages, says the Journal of the American Medical Association. The last few years have seen a gradual increase in deaths resulting from this peculiar combination of circumstances. Cases have been reported which involve inhalation of gas from bathroom heaters as well as from both gasoline launches and automobile engines.

Person Quickly Overcomes. The gas responsible, carbon monoxide, is one which quickly overcomes persons exposed to it above certain concentrations, so that it has been important to determine the limits necessary to cause fatality. In an endeavor to determine this necessary concentration and exposure, Prof. Yandell Henderson, with the aid of a number of colleagues, carried on some studies preliminary to the problems of ventilation involved in the proposed vehicular tunnel under the Hudson river.

Among other conclusions reached by the experimenters, the most important was the determination that, when the time of exposure in hours multiplied by the concentration of carbon monoxide in parts per 10,000 of air equals three, there is no perceptible physiologic effect. When it equals six, there is just a perceptible effect; when it equals nine, headache and nausea are induced; when it equals 15 or more, the conditions are dangerous to life. If a motorcar should give off one cubic foot of carbon monoxide per minute in a closed room 10 by 10 by 20 feet, the atmosphere would reach the dangerous concentration of 15 parts in 10,000 in three minutes.

Dangerous Procedure. Experience has shown that the running of a motorcar in a closed garage for testing or warming up is a dangerous procedure. Scientific evidence reveals the reason for the danger and the narrow limits of safety surrounding the inexperienced motorist who indulges in this hazardous performance.

WATCH STEERING MECHANISM

Car Whose Direction Cannot Be Controlled Is Dangerous—Make Frequent Inspections.

Don't neglect your steering mechanisms. A car whose direction cannot be controlled is dangerous. While adjusting mechanism it is best to turn wheels to extreme right. Parts are worn less at this position than when straight ahead. Never turn the steering wheel while the car is standing still. This puts severe strain on all steering gear parts and is hard on tires. Careful drivers will inspect frequently.

PREVENT MISSES OF ENGINE

Do Not Neglect Manifold, and If Spark Plug Is Not Tight Trouble Will Follow.

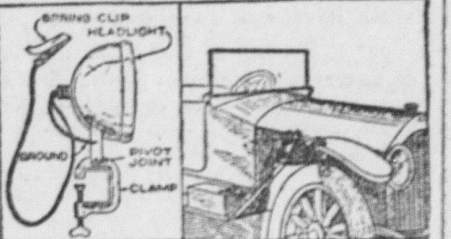
Don't neglect your manifold. If you have a spark plug which is not screwed tight, or a petcock partly open, or a gasket which is not absolutely air-tight, your engine will miss badly when you try to make it pull at slow speed on a hill. To find air leaks squirt a little oil around the plug or gasket and if bubbles show up you have a leak.

DETACHABLE TROUBLE LAMP IS VERY HANDY

Discarded Electric Headlight and Clamp Are Needed.

Light Is Quite Convenient When It Is Necessary to Make Repairs at Night, as It Can Be Attached in an Instant.

A handy detachable trouble lamp for automobiles can be made from a discarded electric headlight and a clamp of the type illustrated. The headlight bracket is attached to the clamp by a small bolt that is passed through holes of suitable size in both pieces. This provides a joint which permits the position of the lamp to be changed when the device is fastened to a fender, or some other part of a car. If the car has a grounded electric system, one of the wires leading to the light bulb is grounded on the lamp, while the second is fitted with a metal clip for attaching it to a "live" point on the wiring system. With a double-wire system, clips should be fastened to the ends of



By Combining an Old Electric Headlight and a Clamp, as Shown Here, a Handy Trouble Lamp for Automobiles Can Be Made.

both wires. The lamp is very convenient when it is necessary to make repairs at night, as it can be attached in an instant wherever it is needed.—Popular Mechanics Magazine.

TEST FOR INDUCTION COIL

Simple Way to Find Out if the Secondary Winding Is in Good Condition.

To test the secondary winding of an induction coil connect a volt meter and a six-volt storage battery to the secondary terminals. The voltmeter should be connected in series, that is, break the wire leading from battery to coil and attach each terminal of the voltmeter to an end of the wire that is broken. If the current will not flow from the battery the winding is open. If the winding is in good condition the voltmeter will show a reading of half the storage battery voltage.

AUTOMOBILE PAINTS

The motorist who continually takes chances usually finishes his ride in an ambulance bound for a hospital.

Because of the narrow streets in many of the cities and towns of Japan, the motorcycle has become far more popular in the Orient than the automobile.

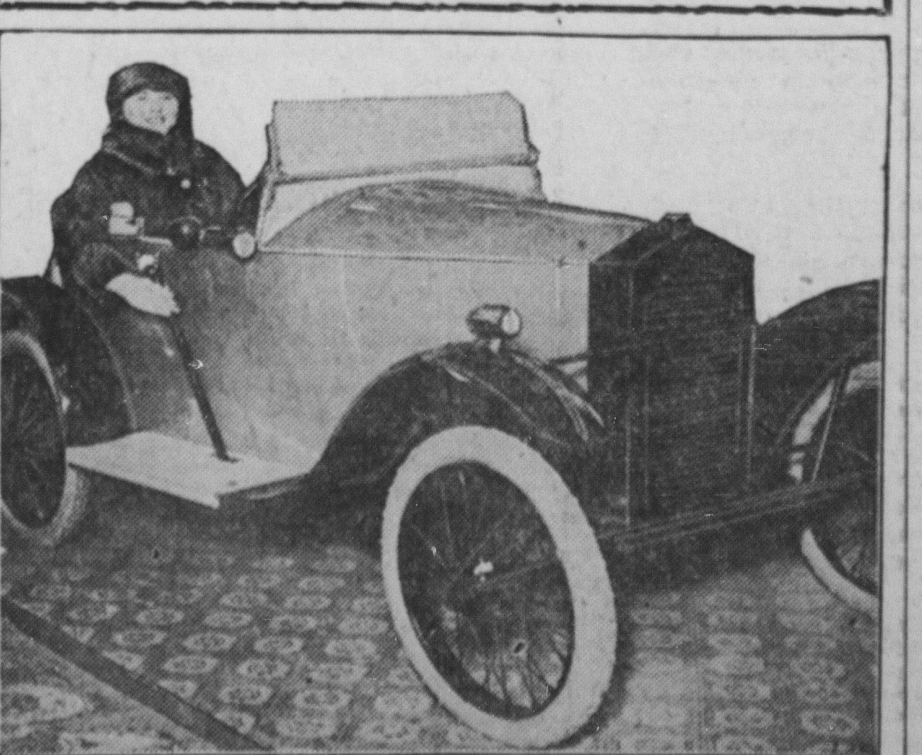
In New York state it is a misdemeanor to use any seal, coat of arms, sign, lettering or insignia of the United States on any privately owned automobile.

If the engine shows too great a tendency to overheat, the radiator is probably clogged and should be cleaned out thoroughly with hot water and washing soda.

Motor vehicle dealers in Boston are co-operating with the public schools of the city in giving instruction to boys who are studying automotive mechanics in the high schools.

Don't neglect small cuts. These will often extend farther than you think. Dirt and wet get in, the fabric rots, and a blowout follows. Look over your tires from time to time.

CHEAP CAR PROBLEM IS SOLVED



In the opening of the Olympic motor show, in London, many useful novelties were among the exhibits. The photograph shows a new ladies' runabout, simple to manipulate and the smallest car at the show. This type bids fair to prove popular with "Hubby," who pays the bill.

Advertisement for 11 One Eleven Cigarettes, featuring an illustration of a man and woman and the text 'Three Friendly Gentlemen', 'TURKISH VIRGINIA BURLEY', and '15¢ for 20'.

Advertisement for a Farm for Sale in Florida, listing details about the property and contact information for Florida Farms and Industries Co.

Advertisement for Florida by Sea Jacksonville, listing fare information and amenities for a steamship service.

Advertisement for Liggett & Myers King Pin Plug Tobacco, featuring the slogan 'that good kind' and 'Try it—and you will know why'.

Advertisement for Financial services, mentioning a \$25.00 buy of City of Warsaw, Poland, Municipal \$2000 Mark Bond.

Advertisement for an Allusion, featuring a quote from a Louisville Courier-Journal about a dog catcher.

Advertisement for Umbrellas, stating 'Umbrellas are like men; usually the poorest are left.'

Advertisement for Your Health is the Most Valuable Asset You Have, featuring a testimonial from Bellepoint, W. Va., about Dr. Pierce's Golden Medical Discovery.

Advertisement for Kemp's Balsam, featuring the text 'for that COUGH! KEMP'S BALSAM' and 'Pleasant to take Children like it'.