

NERVES GAVE OUT

Serious Kidney Trouble Had Made Life Miserable, But Doan's Removed All the Trouble. Hasn't Suffered Since.

"I had such severe pains in my back," says Mrs. Albert Akroyd, 304 W. Indiana Avenue, Philadelphia, Pa., "that they almost doubled me up. Many a day I could not do my housework and at every move it seemed as if my back would break in two. My feet and ankles swelled until I had to wear large-sized slippers and sometimes I couldn't stand up.

"I had dizzy spells and dreadful headaches and every flash passed before my eyes. Had a heavy weight been resting on my head, the pain could not have been more distressing. The least noise startled me, I was so nervous. I couldn't control the kidney secretions and the pain in passage was awful.

"It began to look as though my case was beyond the reach of medicine until I used Doan's Kidney Pills. The first box benefited me and four boxes cured all the troubles. I have had no further cause for complaint."



Mrs. Akroyd
 Thos. H. Walters, Notary Public.
 Get Doan's at Any Store, 66c a Box
DOAN'S KIDNEY PILLS
 FOSTER-MILBURN CO., BUFFALO, N. Y.

CURES WHILE YOU SLEEP

NO PAIN. NO TROUBLE. IN USE OVER 30 YEARS

— KOHLER — ONE NIGHT CORN CURE

TAKE NO SUBSTITUTE

PRICE 15 CENTS EVERYWHERE AT DRUG STORES AND GENERAL STORES
 Kohler Mfg. Co., Baltimore, Md.

IN USE FOR 35 YEARS

BABEK

The Quick and Sure Cure for MALARIA, CHILLS, FEVER AND LA GRIPPE. It is a Powerful Tonic and Appetizer. Will cure that tired feeling, pains in back, limbs and head, constipation, no quinine, arsenic or habit-forming ingredients.

PILOCURA CURES PILES

THE ONLY INTERNAL REMEDY

Large trial box sent free on receipt of 25c. AGENTS WANTED
 Pilocura Co., Washington, D. C.
 W. N. U., BALTIMORE, NO. 43-1912.

Polk Miller's 10c. Liver Pills

The Good Old Kind that always do the work. Same formula for 50 years. Unequaled for Biliousness, Sick Headache, Constipation and Malaria. At all druggists. Manufactured by Polk Miller Drug Co., Inc., Richmond, Va.

TRACTOR WON'T JUMP FENCES

Some of the Arguments in Favor of Its More General Use—Will Not Bite, Balk, or Run Away.

Some of the many arguments in favor of the tractor are given as follows in Farm Life:

It will not bite, balk or run away. It will not shy at a loose scrap of paper in the road. It will not kick the stall all night and keep the tired farmer and his wife awake. It will not crib the manger.

It will not break out of the barn at night, jump the fence and eat your neighbor's cabbages.

It will not lie down in a particularly moist spot in the barnyard, roll over on its back and elevate its four feet into the air.

It does not have to be carried, sponged off or treated with horse liniment.

It is not addicted to colic, cough, heaves, spavin or wind-gall.

It will not snort in your ear or whisk its tail in your face.

It will not "haw" when you tell it to "gee" or vice-versa.

You do not have to pull on the lines and holler your head off when you want it to stop.

It does not "up and die" just as the spring work is coming on.

When a doctor gives a patient hope he expects pay for it.

GET READY FOR "FLU"

Keep Your Liver Active, Your System Purified and Free From Colds by Taking Calotabs, the Nauseless Calomel Tablets, that are Delightful, Safe and Sure.

Physicians and Druggists are advising their friends to keep their systems purified and their organs in perfect working order as a protection against the return of influenza. They know that a clogged up system and a lazy liver favor colds, influenza and serious complications.

To cut short a cold overnight and to prevent serious complications take one Calotab at bedtime with a swallow of water—that's all. No salts, no nausea, no griping, no sickening after effects. Next morning your cold has vanished, your liver is active, your system is purified and refreshed and you are feeling fine with a hearty appetite for breakfast. Eat what you please—no danger.

Calotabs are sold only in original sealed packages, price thirty-five cents. Every druggist is authorized to refund your money if you are not perfectly delighted with Calotabs.—(Adv.)

As a strengthening tonic for love that has become weak there is nothing better than a little indifference.

BOSCHEE'S SYRUP.

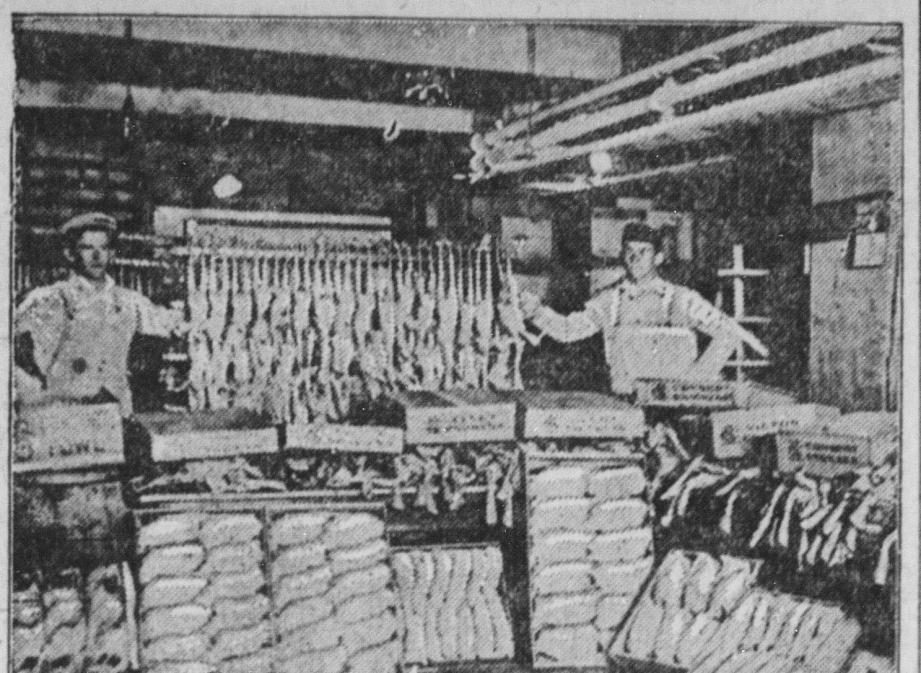
In these days of unsettled weather look out for colds. Take every precaution against the dreaded influenza and at the first sneeze remember that Boschee's Syrup has been used for fifty-three years in all parts of the United States for coughs, bronchitis and colds, throat irritation and especially for lung troubles, giving the patient a good night's rest, free from coughing, with easy expectoration in the morning. Made in America and kept as a household panacea in the homes of thousands of families all over the civilized world. Try one bottle and accept no substitutes.—Adv.

Kissing either wife or child was a punishable offense in England in the seventeenth century.

The Strong Withstand the Heat of Summer Better Than the Weak. Old people who are feeble and younger people who are weak, will be strengthened and enabled to go through the depressing heat of summer by taking Grove's Laxative Pills. It purifies and enriches the blood and builds up the whole system. You can soon feel its strengthening, invigorating effect. 50c.

Bagdad is famous for its breed of white asses. Their ears and tails are sometimes colored a bright red.

EXTREME CARE IS MOST ESSENTIAL FOR PRESERVATION OF POULTRY IN TRANSIT



Be Sure to Use Only Suitably Equipped Cars for Shipping Dressed Poultry.

(Prepared by the United States Department of Agriculture.)
 Scrupulous care in pre-cooling a refrigerator car for shipping dressed poultry, always a matter of importance, is doubly so now, in the opinion of food-research experts. The greater necessity for care comes, in the first place, of the fact that there is a nationwide ice shortage. The second important element is that, following the stress of war-time transportation, the refrigerator equipment of the country is in a run-down condition. The car should be carefully examined, the experts say, to see that it admits not even a pin point of light. Then it should be tested and, if it falls short of standard, there should be no hesitation about rejecting it and calling on the railroad agent for a car that will meet the requirements. Extreme care, the experts believe, is essential just now for the preservation of poultry in transit, and the chief of the department's food research laboratory has just issued the following definite information as to how satisfactory results are to be attained:

Select Car Day Before Loading.
 "When the refrigerator car is set for icing, enter it and with doors and hatches tightly closed look carefully for any crack or point of daylight. The car should be absolutely black with not a pin point of light anywhere. If there are distinct cracks around the doors or hatches, the car will not maintain sufficiently low temperature and should not be used for the hauling of dressed poultry or any other commodity requiring ice and salt refrigeration. Be sure also that the drain pipes are open and in good working order.

"The selected car should be set for icing at least 24 hours before it is to be loaded. Its bunkers should then be filled three-quarters full with finely broken ice; that is, no piece should be larger than a man's fist. When the bunkers are three-quarters full, tamp the ice down well so that all cracks and crevices are filled. Then add one-quarter of the calculated amount of salt on the 12 per cent basis. For instance, if the bunker holds 5,000 pounds of ice, when three-quarters full it will contain 3,750 pounds. On top of this amount of ice scatter 150

pounds of coarse gray rock salt. Mix this salt very lightly with the top ice and directly on top of it place more crushed ice until the bunker is full. Then add the remainder of the calculated amount of salt, which, in this case, would be 450 pounds. Mix it very lightly with the fine ice so that the salt does not penetrate into the mass of ice more than 4 or 5 inches; level the surface and quickly close the hatches.

Right Temperature Is 34 Degrees.
 "With both bunkers so iced and salted, the car should stand for 24 hours. Then, in order to make sure that the temperature is right for loading, a man provided with a thermometer should enter as quickly as possible by opening one side of one door, which should be tightly closed immediately. The man should stand midway between the doors holding the thermometer about 4 feet from the floor until the mercury has responded to the car temperature, which ordinarily is accomplished in from three to five minutes, depending on the quality of the thermometer. The temperature of the car at this point should not be above 34 degrees F. If it is more than 38 degrees at this point, it is dangerous to load the car for a haul requiring intensive refrigeration. Unless the shipper is willing to take chances on the condition in which his load will arrive at the market, he should communicate with the railroad agent and request a car which is able to refrigerate the dressed poultry properly.

"All refrigerator cars should be provided with a floor rack 4 inches in the clear, built of lengthwise stringers made from 2 by 4 lumber and crosswise slats made from 1 by 3 lumber, with 1 1/2 inch spaces between. These crosswise slats are nailed to the lengthwise stringers. They do not interfere with trucking the load into the car. They should extend across the doorway, since it is this part of the car which is hardest to refrigerate and where air circulation is most needed. All railroad owned refrigerators as rapidly as possible are being equipped with racks which are fastened to the side walls so that they can be turned back for cleaning."

URGE UNITED FIGHT ON EUROPEAN BORER

Insect Is Serious Menace to American Agriculture.

Has Become Well Established in Both Massachusetts and New York—Most Energetic Measures Favored for Eradication.

(Prepared by the United States Department of Agriculture.)
 The European corn borer undoubtedly is a serious menace to American agriculture. The United States department of agriculture has for some time called attention to the extreme danger from this pest, which has become well established in both Massachusetts and New York. Now comes this reinforcement of that judgment:

"We, the National Association of Commissioners of Agriculture, with official entomologists from many states and representatives of the United States department of agriculture, together with representatives of the Canadian government, present as experts in conference upon the situation, express ourselves, after thoroughly convinced that this pest is one of the most dangerous insects which has become established in America, and we hereby place ourselves on record in favor of most energetic efforts on the part of federal and state agencies to control and, if possible, to exterminate this insect, including in the program vigorous quarantines to prevent its distribution."

That is a part of the resolutions adopted by the European Corn-borer conference, begun at Albany, N. Y., on August 28 and concluded at Boston, Mass., on August 29. The state commissioners of agriculture, state entomologists and others went over the corn fields around Schenectady, N. Y., and Boston, Mass., and saw the methods of destruction practiced by the United States department of agriculture and the state agencies, to-

TREES GROW BEST ON SLOPES

Roughest Areas on Farm Present Most Favorable Localities for Successful Growth.

(By W. J. MORRILL, Colorado Agricultural College, Fort Collins, Colo.)
 Trees, especially cone bearing trees, seem to prefer newly eroded soil. Steep slopes are exposed to comparatively rapid erosion and here trees do the best. Level ground indicates old soil, old in the sense that it was derived from rock, as a rule, longer ago than soil found on steep slopes. Old soil probably contains an excess of soluble salts, too much for best tree growth.

In the mountains one sees the steep slopes clothed with trees, while the occasional flat spot is likely to be bare of trees. The roughest areas on the farm present the most favorable localities for successful tree growing.

KEEP VEGETABLES IN WINTER

Temperature Slightly Above Freezing Point Is Preferred for Beets, Turnips and Carrots.

(By A. F. YEAGER, North Dakota Agricultural College.)
 Turnips, beets, and carrots will keep best at a temperature slightly above freezing. Cabbage will stand considerable freezing, and safsay and parsnips may be left in the soil over winter if desired. Squashes and pumpkins will keep best in a warm dry place. A warm attic where it does not freeze is good. Potatoes require a cool place not too dry. Cabbage and nearly all root crops may be stored in the ground. They must be put deep enough to be below the frost line and should be surrounded with straw to keep them from direct contact with the soil.

ASPIRIN FOR HEADACHE

Name "Bayer" is on Genuine Aspirin—say Bayer



Insist on "Bayer Tablets of Aspirin" in a "Bayer package," containing proper directions for Headache, Colds, Pain, Neuralgia, Lumbago, and Rheumatism. Name "Bayer" means genuine Aspirin prescribed by physicians for nineteen years. Handy tin boxes of 12 tablets cost few cents. Aspirin is trade mark of Bayer Manufacture of Monocetate of Salicylic Acid.—Adv.

London gets a shower of soot to the extent of four and a half pounds an acre every day.

PHYSICALLY FIT AT ANY AGE

It isn't age, it's careless living that puts men "down and out." Keep your internal organs in good condition and you will always be physically fit.

The kidneys are the most over-worked organs in the human body. When they break down under the strain and the deadly uric acid accumulates and crystallizes, look out! These sharp crystals tear and scratch the delicate urinary channels causing excruciating pain and set up irritations which may cause premature degeneration and often do turn into deadly Bright's Disease.

One of the first warnings of sluggish kidney action is pain or stiffness in the small of the back, loss of appetite, indigestion or rheumatism.

Do not wait until the danger is upon you. At the first indication of trouble go after the cause at once. Get a trial box of GOLD MEDAL Haaslem Oil Capsules, imported direct from the laboratories in Holland. They will give almost immediate relief. If for any cause they should not, your money will be refunded. But be sure to get GOLD MEDAL. None other is genuine. In sealed boxes, three sizes.—Adv.

The pope's daily average of letters is 22,000, and these are dealt with by twenty-five secretaries.

You never can know how superior to other preparations Dr. Peery's "Dead Shot" is until you have tried it once. A single dose cleans out Worms or Tapeworm. Adv.

RUSSIANS HIT BY FAMINES

Shortages of Food Date From 1600—8,000,000 Persons Reduced to Starvation in Famine of 1911.

Next to the proletariat of India and China, the Russian peasant feels the pinch of poverty and hunger more keenly and more frequently than any other, says the National Geographic Society. One of the earliest Russian famines on record was that of 1690, with a death toll of 500,000 peasants. Cats, dogs and rats were eaten, and even the strong overcame the weak. Human flesh was sold in the markets.

Three Russian famines of recent date were among the most severe in history—in 1891, 1906 and 1911. During the ten years following the first of these, the government allotted nearly \$125,000,000 for relief, but the sums were not always judiciously expended. In 1906 the government gave 40 pounds of flour a month to all persons under eighteen years old and over fifty-nine. Those between these ages received no allowance, and the older and younger shared their pittance with the others.

The famine of 1911 extended over one-third the area of Europe and affected 30,000,000 persons, while 8,000,000 were reduced to starvation. Weeds, the bark of trees and bitter bread made of acorns, constituted the chief diet.

Clay Output Falls Off

The quality and value of the clay mined in the United States in 1919 showed a considerable decrease in output but an increase in value compared with 1917. The total quantity of clay mined and marketed as such is estimated at 2,840,000 short tons, valued at \$9,207,000, or \$3.28 a ton. This is a decrease of about 304,000 tons, or 10 per cent, in quantity, but an increase of about \$1,165,000 or 14 per cent in value. The imports decreased in both quantity and value.

A Saver to pocket book and health, and a delight to the palate.

Do as your neighbor is doing and cut the high cost of living by drinking

INSTANT POSTUM

Instead of coffee. No Raise in Price 50-Cup Tins 30¢—100-Cup Tins 50¢

Made by POSTUM CEREAL COMPANY Battle Creek, Mich. Sold by Grocers and General Stores

SHILOH 30 DROPS COUGHS

BILIOUSNESS Cause by Acid-Stomach

If people who are bilious are treated according to local symptoms they seldom get very much better. Whatever relief is obtained is usually temporary. True biliousness is its source and remove the cause and the chances are that the patient will remain strong and healthy.

Doctors say that more than 70 non-organic diseases can be traced to an Acid-Stomach. Biliousness is one of them. Indigestion, heartburn, belching, sour stomach, bloating and gas are other signs of acid-stomach. EATONIC, the marvelous modern stomach remedy, brings quick relief from these stomach miseries which lead to a long train of ailments that make life miserable if not corrected.

EATONIC literally absorbs and carries away the excess acid. Makes the stomach strong, cool and comfortable. Helps digestion, improves the appetite and you thus get full strength from your food. Thousands say that EATONIC is the most effective stomach remedy in the world. It is the help YOU need. Try it on our money-back-if-not-satisfied guarantee. At all druggists. Only 50 cents for a big box.

EATONIC (FOR YOUR ACID-STOMACH)

Leggett & Myers KING PIN CHEWING The tastiest tobacco you ever tasted.

STOP SUFFERING SAM'S PILE REMEDY URE AND QUICK AT DRUG STORES OR 100 BY MAIL SAM E. RICHARDSON DRUGGIST URBANNA, VA.

INVEST IN OIL—The richest company of its age. Drilling just started. Now 4 1/2% above par. Particulars free: Write Central Gas and Oil Co., Moran, Texas.

Uncomplimentary.

At one of the famous Lamb's Club gambols, a young and aspiring actor appeared on the program in an imitation of Nat Goodwin.

Goodwin himself was present at the performance. After the gambol was over the young actor, much to his delight, succeeded in getting himself introduced to Nat.

"Were you present at the performance tonight, Mr. Goodwin?" he asked.

"Yes," was the answer. "I was there."

"And did you see my imitation of you, Mr. Goodwin?" continued the young man.

"Yes, I saw it," came the reply.

"And," persisted the aspiring youth, "may I ask you to give me your verdict on the excellence and fidelity of my art as disclosed in the impersonation of yourself?"

"Well," said Mr. Goodwin, "one of us is rotten."—Everybody's Magazine.

Clay Output Falls Off

The quality and value of the clay mined in the United States in 1919 showed a considerable decrease in output but an increase in value compared with 1917. The total quantity of clay mined and marketed as such is estimated at 2,840,000 short tons, valued at \$9,207,000, or \$3.28 a ton. This is a decrease of about 304,000 tons, or 10 per cent, in quantity, but an increase of about \$1,165,000 or 14 per cent in value. The imports decreased in both quantity and value.

Build Up With Grape-Nuts

Popular for its delightful flavor and because it furnishes certain food values necessary for building the best in body and brain

Users know by test "There's a Reason"