

GOOD-BYE BACKACHE, KIDNEY AND BLADDER TROUBLES

For centuries all over the world GOLD MEDAL Haarens Oil has afforded relief in thousands upon thousands of cases of lame back, lumbago, sciatica, rheumatism, gallstones, gravel and all other affections of the kidneys, liver, stomach, bladder and allied organs. It acts quickly. It does the work. It cleanses your kidneys and purifies the blood. It makes a new man, a new woman, of you. It frequently wards off attacks of the dread and fatal diseases of the kidneys. It often completely cures the distressing diseases of the organs of the body allied with the bladder and kidneys. Bloody or cloudy urine, sediment, or "brickdust" indicate an unhealthy condition.

Do not delay a minute if your back aches or you are sore across the loins or have difficulty when urinating. Go to your druggist at once and get a

box of imported GOLD MEDAL Haarens Oil Capsules. They are pleasant and easy to take. Each capsule contains about one dose of five drops. Take them just like you would any pill. Take a small swallow of water if you want to. They dissolve in the stomach, and the kidneys soak up the oil like a sponge does water. They thoroughly cleanse and wash out the bladder and kidneys and throw off the inflammation which is the cause of the trouble. They will quickly relieve those stiffened joints, that backache, rheumatism, lumbago, sciatica, gallstones, gravel, "brickdust," etc. They are an effective remedy for all diseases of the bladder, kidney, liver, stomach and allied organs. Your druggist will cheerfully refund you money if you are not satisfied after a few days' use. Accept only the pure, original GOLD MEDAL Haarens Oil Capsules. None other genuine.—Adv.

Like Producing Like.

"It was a great send-off they gave Jimmy, wasn't it?" "Yes, and there'll be a comeback, too."

How's This?

We offer \$100.00 for any case of cataract that cannot be cured by HALL'S CATARRH MEDICINE. HALL'S CATARRH MEDICINE is taken internally and acts through the Blood on the Mucous Surfaces of the System. Sold by druggists for over forty years. Price 75c. Testimonials free. F. J. Cheney & Co., Toledo, Ohio.

Otherwise Peaceful.

"Was it a military dinner?" "Just a suggestion of the military. We shelled the nuts."

When Baby is Teething. GROVE'S BABY BOWEL MEDICINE will correct the Stomach and Bowel troubles. Perfectly harmless. See directions on the bottle.

Pleasant Politics.

"I hear a lot of pretty girls voted this year." "Yes, I enjoyed getting out the vote."

Cure pimples, headache, bad breath by taking May Apple. Aloe, Jaiap rolled into a tiny sugar pill called Doctor Pierce's Pleasant Pellets. Adv.

In the human barometer smiles mean sunshine and frowns mean frost.

Severe Injury.

Civilian—"How did you get that wound stripe?" Private—"Me heart broke when we didn't march to Berlin."

Important to Mothers. Examine carefully every bottle of CASTORIA, that famous old remedy for infants and children, and see that it bears the Signature of *Wm. L. Fletcher* In Use for Over 30 Years. Children Cry for Fletcher's Castoria

A Good Match.

"When I get a car, I want one which will suit me." "Then, my dear, you had better get a runabout."

Infections or inflammations of the Eyes, whether from external or internal causes, are promptly healed by the use of Roman Eye Balsam at night upon retiring. Adv.

Sometimes what is regarded as a pious life is merely a contemptible one.

True love seldom finds it necessary to express itself in words.

The way of the world, Elizabeth, is around the sun.

WINTER STORES FOR HONEY BEE

Of Much Importance to Consider Both Quality and Quantity of Food Supply.

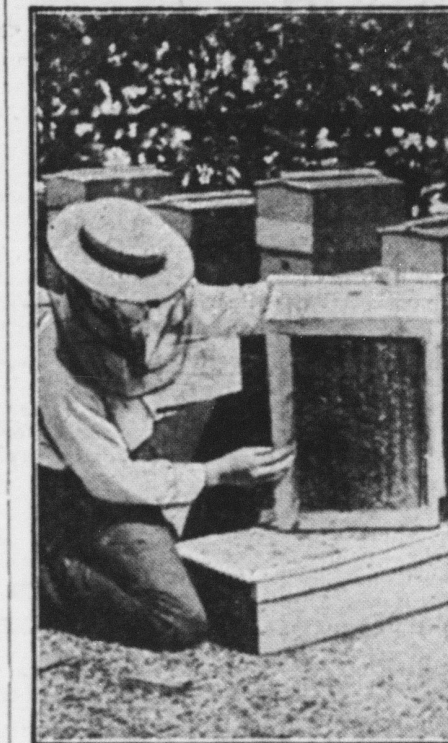
SUGAR SIRUP MUCH FAVORED

Most Common Cause of Poor Colonies In Spring Is Poverty, Directly Due to Negligence on the Part of the Beekeeper.

(Prepared by the United States Department of Agriculture.)

The stores given to the bees from the end of one season to the beginning of the next are of the first importance. It is necessary to consider both the quality and the quantity of these stores.

Quality of Stores. As has been stated, it is fortunate that in both of the zones where cellar wintering is or might be practiced the natural stores usually are good. Honeys such as those from white and alkali clovers, sweet clover, alfalfa, wild raspberry, buckwheat, and will-



It is Easy to Handle Bees When You Know How.

lowherb are fine stores for winter, while honeys from basswood, hartsense (smartweed), asters, goldenrod, and most of the other fall flowers are less desirable. It is especially important during the period when the bees are in the cellar that the stores shall be of the very finest quality, and it is therefore the practice of many good beekeepers to feed each colony five pounds or more of sirup made of granulated sugar late in the fall, after all brood-rearing has ceased. This insures that the bees will have for their use, during the period of confinement in the cellar, stores which will not bring about the condition known as dysentery. In general it may be stated that honeys from mixed sources and dark honeys, except buckwheat, are to be avoided. Honeydew honeys are highly injurious and in all cases where such stores are present granulated sugar sirup should be fed.

Quantity of Stores.

From the end of one honey season to the beginning of the next a good colony of bees will need fully 45 pounds of honey. When the bees are wintered in the cellar, it is usual to have all of this honey in the one hive body in which they are wintered. It is a good practice to have at least 20 pounds within this hive, although 15 pounds will be safe. It is absolutely imperative, however, that the remainder of the 45 pounds shall be available to be given to the bees soon after they are taken from the cellar. The most common cause of poor colonies in the spring is poverty, directly due to neglect on the part of the beekeeper. A good beekeeper sees to it that at no time when brood is being reared do his bees have less than 15 pounds of stores in the hive, and the full amount of 45 pounds often will all be used, and is always needed if the colonies are to come to full strength on time for the gathering of the full crop. This amount is always augmented by honey from spring flowers, for 45 pounds of honey is not enough to bring a colony to full strength in time for the main honey-flow.

PRODUCE AN IMPORTANT FOOD

Boys' Clubs Are Being Instructed in Hog Raising—Become Soldiers of Commissary.

(Prepared by the United States Department of Agriculture.)

By means of the boys' pig clubs thousands of boys under nineteen years are being instructed in hog raising and by this means are helping to produce a very important food. A good general account of this work may be found in "Pig Clubs and the Swine Industry" (Yearbook 1917, Separate 753). Your county agent, club leader, or director of extension work at the State Agricultural college will tell you of the work in your own state and how to join a club. The department wants 200,000 boys to raise pigs—40,000 are already doing it. If you live in the country, the small town, or the suburbs of a city, you can do it, too.

FARM ACCOUNTS ARE OF BIG IMPORTANCE

Determine Which Branch of Farming Is Most Profitable.

Of Great Assistance in Rearranging Farm on More Profitable Basis—Records Will Prove to Be of Great Benefit.

(Prepared by the United States Department of Agriculture.)

There is no doubt that the keeping of farm accounts will prove of great value in determining which branches of farming are the most profitable. If they are kept accurately for a long period they may be of great assistance in rearranging the farm on a more profitable basis. In making use of the results of a year's cost accounts for purpose of perfecting the organization of the farm for the greatest profit any changes should be made with caution.

Hasty conclusions should not be drawn. Sometimes a positive decrease in a year's profits may ensue if an enterprise be dropped because, taken alone, it has failed to pay. Cows, for instance, may not be showing a net profit, but if all the cows are sold there may be no other profitable way of using up roughage which would thereby be wasted, resulting in a loss on the crop producing it. Labor devoted night and morning to milking and feeding cows, and charged to them, would be entirely wasted if the cows were sold and nothing else supplied to utilize it. Thus an added labor burden would have to be borne by the other enterprises. It is much better that they should be a dead loss, even though the cow account alone just breaks even, or worse. Any changes indicated, if made, should be brought about gradually and the effects noted in their relation to all other farm activities.

There is nothing like a set of records as a means of analyzing a farm business. To use such records, however, the fundamental principles must be understood and compiled with; their limitations as well as their usefulness must be grasped. When this is done the accounts will become a strong staff and support.

PREVENT EROSION OF LANDS

Effective Way to Prevent Trouble Is to Build Terraces—Lay Out With Farm Level.

(Prepared by the United States Department of Agriculture.)

Throughout many parts of the United States the hilly and rolling lands are subject to erosions from the heavy winter rains. An effective way to prevent this erosion is to build terraces, preferably not less than 15 feet wide,



Land Terraced to Prevent Erosion.

that have been carefully laid out with a good farm level. It is much easier to save lands from washing away by means of terracing than it is to attempt to build up washed and gullied fields.

LAUD COUNTY FARM BUREAU

These Organizations Insure Interest in Co-operation of Farmers in Producing Food.

(Prepared by the United States Department of Agriculture.)

"The county farm bureau is one of the best agencies thus far devised for insuring interest and co-operation of farmers in the great work of food production so necessary to the success of our arms."

This statement was made in telegrams of appreciation sent by Clarence Ousley, acting secretary of agriculture, to farmers in two Montana counties who had organized for war farming. From Chinook, Mont., came the following telegram to the secretary of agriculture:

"Having completed the organization of the Blaine county farm bureau, 550 Blaine county farmers pledge to you, as the farmers' representative on the president's cabinet, their united support as an organization to do their utmost to help win the war."

The following telegram came from Glasgow, Mont.:

"Farm bureau organization of Valley county completed with 325 members; enthusiastic to co-operate with department of agriculture in supporting food administration to the utmost. Drought conditions prevail, but farmers' spirit unshaken. With better methods of farming, learned through the farm bureau, agricultural conditions will improve."

WRIGLEY'S

All Now in Pink Wrappers

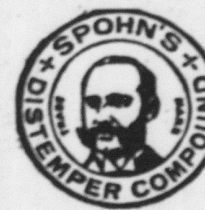
To save tin foil for Uncle Sam, WRIGLEYS is now all wrapped in pink paper and hermetically sealed in wax:

1. The tangy flavor of mint
2. The luscious different flavor
3. The soothing flavor of peppermint



All in pink-end packages and all sealed air-tight. Be Sure to get WRIGLEYS because

The Flavor Lasts!



Puts a ... Stop to all Distemper CURES THE SICK

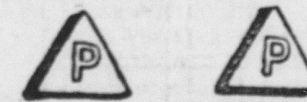
And prevents others having the disease no matter how exposed 60 cents and \$1.15 a bottle, \$5.50 and \$11.00 a dozen bottles. All good druggists and turf goods houses. Spohn Medical Co. Goshen, Ind., U. S. A.

Making Things Worse. It was at a party. He slipped up and tweaked her ear. She turned her head. "Beg pardon," he stammered. "I thought it was my wife." "It is quite all right," the lady replied. "You see," he went on, "we sometimes get the wrong sow by the ear." And that was about all for him.—Louisville Courier-Journal.

PAPE'S DIAPEPSIN FOR INDIGESTION

EAT ONE TABLET! NO GASES, ACIDITY, DYSPEPSIA OR ANY STOMACH MISERY.

Undigested food! Lumps of pain; belching gas, acids and sourness. When your stomach is all upset, here is instant relief—No waiting!



The moment you eat a tablet or two of Pape's Diapepsin all the indigestion pain and dyspepsia distress stops. Your disordered stomach will feel fine at once.

These pleasant, harmless tablets of Pape's Diapepsin never fail and cost very little at drug stores. Adv.

A girl never graduates until she has learned to stab a pickle with a hat pin.

It is better to live in the foggy present than in the misty past.



Backache

The excruciating pain which comes from a lame back is quickly alleviated by a prompt application of Yager's Liniment.

Sufferers from rheumatism, sciatica, neuralgia, sprains, etc. should always keep a bottle of "Yager's" handy as its penetrative qualities quickly bring relief from pain.

At all dealers. Price 35 cents. The latest bottle of Yager's Liniment contains twice as much as the usual 50c bottle of liniment.

YAGER'S LINIMENT RELIEVES PAIN

GILBERT BROS. & CO. BALTIMORE, MD.

CONSTIPATION

IS HUMANITY'S GREATEST FOE. It is always a terror to old people and a menace at some time or another to every human being, young or old. It is the forerunner of more ill and suffering than almost any of NATURE'S DANGER SIGNALS and should never be allowed to go unheeded. At the very first indication of constipation get DR. TUTT'S LIVER PILLS which for 72 years has been successfully used for this most prevalent of all disorders. For sale by druggists and dealers everywhere.

Dr. Tutt's Liver Pills

BLACKMANS MEDICATED SALT BRICK

STOCK LICK IT

STOCK LIKE IT

ROSES, CHICKEN, SHEEP & HOGS

CONTAINS COPPERAS FOR WORMS, SULPHUR FOR THE BLOOD, SALT PETER FOR THE KIDNEYS, RUX VOMICA, A TONIC AND PURE DAILY SALE. USED BY VETERINARIANS 12 YEARS. NO DOSING. ASK YOUR DEALER FOR BLACKMANS OR WRITE.

BLACKMAN STOCK REMEDY COMPANY Chattanooga, Tenn.

Low Meat Prices vs. High Cattle Prices

If the farmer cannot get enough for his live stock, he raises less, and the packer gets less raw material.

If the consumer has to pay too much for his meat, he eats less of it, and the packer finds his market decreased.

The packer wants the producer to get enough to make live-stock raising profitable, and he wants the price of meat so low that everyone will eat it.

But all he can do, and what he would have to do in any case to stay in business, is to keep down the cost of processing the farmer's stock into meat so that the consumer pays for the meat and by-products only a little more than the farmer gets for his animals.

For example, last year Swift & Company paid for its cattle about 90 per cent of what it got for meat and by-products (such as hides, tallow, oils, etc.)

If cattle from the farm were turned miraculously into meat in the hands of retailers (without going through the expense of dressing, shipping and marketing), the farmer would get only about 1 1/8 cents per pound more for his cattle, or consumers would pay only about 2 1/4 cents per pound less for their beef!

Out of this cent or two per pound, Swift & Company pays for the operation of extensive plants, pays freight on meats, operates refrigerator cars, maintains branch houses, and in most cases, delivers to retailers all over the United States. The profit amounts to only a fraction of a cent, and a part of this profit goes to build more plants, to give better service, and to increase the company's usefulness to the country.

Swift & Company, U. S. A.