

# CASTORIA

For Infants and Children.

**Mothers Know That  
Genuine Castoria**

Always  
Bears the  
Signature

of

*Chas. H. Fletcher*

In  
Use

For Over  
Thirty Years

# CASTORIA

Exact Copy of Wrapper.

Quick to Go.  
Doctor—You are as sound as a dollar.  
Patient—I hope I last longer than one, doctor.  
What the average man needs is theories that are nonexplosive.

Trust, and Fear Not.  
"He saith, 'A whole I planned, Youth shows but half; trust God—see all, nor be afraid.'"—Browning.  
People who marry for money usually live to regret that they didn't learn a trade instead.



## Unlike Topsy— Swift & Company Has Not "Jest Grown"

Swift & Company, in fifty years of well ordered growth, has become one of the great national services because it has learned to do something for the American people which they needed to have done for them, in the way in which they preferred to have it done.

It has met each successive demand, in the changing conditions of national life, by getting good meat to increasing millions effectively, efficiently, economically, and expeditiously.

The Swift & Company packing plants, refrigerator cars, car routes, branch houses, organization, and personnel of today are the practical solutions, born of practical experience, to the food problems of half a century.

Because of all these elements working in correlation and unison, Swift & Company is able to supply more and better meat to more people than would have been possible otherwise, at a net profit per pound of meat so low (a fraction of a cent) that the consumer price is practically unaffected.

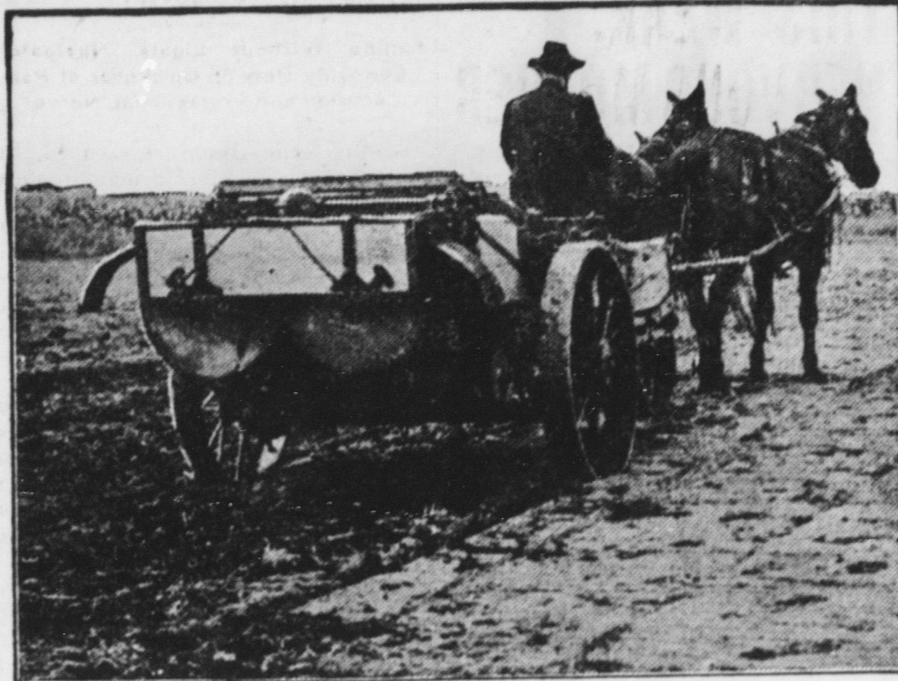
Strip away any portion of this vast, smooth-running human machine, and you make a large part of the meat supply uncertain, lose the benefit of half a century of fruitful experience, and scatter the intelligent energies of men who have devoted a life work toward meeting the needs of a nation in one vital field.

The booklet of preceding chapters in this story of the packing industry will be mailed on request to  
Swift & Company,  
Union Stock Yards, Chicago, Illinois.

Swift & Company, U. S. A.



## ESSENTIAL THAT FARMER SAVE EVERY BIT OF FARM MANURE DURING WINTER



PROPER WAY TO APPLY MANURE TO LAND.

(Prepared by the United States Department of Agriculture.)

Late fall—any time before the ground freezes—on most farms is the easiest time to provide for making the most out of the home supply of manure. And this year, when commercial fertilizers are high in price or impossible to obtain, it is doubly essential that we save every bit of the farm manure.

"Apply as fast as made" is the best rule before the ground freezes, and even later than that on level ground. But in hilly sections the farmers doubtless are right in thinking there is too much loss from the manure washing down the hillsides after the ground freezes, or on the snow. Then, too, in the North the snow is sometimes too deep for hauling to be practicable.

### Pit for Storing.

Most literature on the subject of pit building for manure storage is based on using concrete for material. While this will usually pay if capital is available, many farmers feel they do not have the money to put into it. Fortunately there are other ways that will help greatly with little or no cash expense. If a roof is already available under which to store the manure, the ground should be leveled, or, better, made to slope toward the center. Then, if the soil is sandy or loamy, the surface should be removed to a depth of six inches or so and the heaviest clay procurable put in. After spreading a

couple of inches of clay it should be wetted and thoroughly tamped down. This process should be repeated until the desired height is obtained. The outside rim may well be a foot or more higher than the center, this depending on the size of the pit and the ease of access for hauling away the manure. While such a bottom will hold much of the liquid, it is better to cover it with some absorbent material—dry loam is good if bedding is scarce. Do not use wood ashes, but coal ashes are harmless if screened. Continue to use enough loam to prevent any liquid from oozing from the pile, which should be kept level, moist and well tamped. Horse manure, unless mixed with that from cows or hogs, should be wetted thoroughly—but not enough to drain out—in order to keep it from heating, as heating causes a heavy loss.

### Keep Under Roof.

If there is no roof under which to keep the manure, a cheap one should be built. This may be a one-slope "lean-to" along the outside of the barn, a cheap shed with sides, or simply four heavy, high posts on which a roof slides up or down according to the height of the manure—such as is used in some sections for outdoor haystacks. If you can't do all these things, do what you can. It will help you and the country not only during the war but after the war.

## HOARDING AND PROFITEERING

Dealer Should Not Hold or Contract for More Than Reasonable Requirements of Trade.

(Prepared by the United States Department of Agriculture.)  
To sell farm equipment on the basis of what it would cost the dealer to replace it may be considered profiteering, according to a statement issued recently by the office of farm equipment control of the United States department of agriculture.

Persons who have sold equipment at replacement values when costs were high must continue to do so if prices go down, even though such sales bring less than the original cost price of the stock. Moreover, those whose selling price is fixed in relation to high replacement prices must restock immediately and carry the same quantity of equipment throughout the high-price period as they had at its beginning. In order not to profiteer. Those who desire to sell out without replacing their stock should not sell at a prevailing high price, but at cost plus a fair usual profit.

It will be considered hoarding if manufacturer or dealer holds, contracts for, or arranges for more equipment than the reasonable demands of his business require. Dealers finding themselves with excess stock on hand through inadvertence should sell their excess holdings at cost plus a fair usual profit.

The hoarding of farm equipment is defined by the act of congress of August 10, 1917. Manufacturers or dealers who hoard will be dealt with under the terms of this act of congress and not under the ruling as to replacement values just issued by the equipment control office.

## BENEFITS OF MOTOR TRUCKS

Cross-Country Hauling Again Has Become Widely Used for Inter-City Transportation.

An even century ago transportation interests centered on Wheeling, W. Va. That year saw the Cumberland road—the wagon highway planned as a dominating factor in leading settlers to the great West—completed as far as the outlying town on the Ohio. Fifteen years later the road had been extended to Columbus; in another decade it crossed the Indiana state line.

Then came the steam railway. With the arrival of this new transportation colossus, interest in the Cumberland and other highways waned rapidly. Road building all but stopped, long distance hauling by highway stopped, too.

And now, after three-quarters of a century, cross-country hauling again has become a widely recognized form of inter-city transportation. The powerful, big load motor truck again has ushered in the highway as an important part of our national transportation system.

## WOOD FOR FUEL

(Prepared by the United States Department of Agriculture.)  
Rural schools and churches, even more than homes, should restore the old wood pile and make themselves sure of warmth this winter. Every building used during only part of the day or on one or two days a week should burn wood.

## BARBERRY AIDS WHEAT RUST

Proof of Close Relationship of Disease on Common Shrub and Cereals Seen in Indiana.

(Prepared by the United States Department of Agriculture.)  
Further proof that there is a close relationship between the rust of barberries and of wheat and other cereals has resulted in active campaigns to eradicate the shrub in many communities. Two rather striking cases of this close relationship were observed recently in Indiana. In one locality a field of wheat, along one side of which grew a barberry hedge, was practically destroyed by the black stem rust. The case was so clear that 17 farmers held a field observation day under the guidance of the county agent and immediately drew up resolutions, in which they stated that the relation was so clear that they wished to go on record as favoring legislation to eradicate all barberry bushes from the state. In another case a hedge of barberry and two deep plantings were found on a farm upon which a wheat field was so badly affected that the crop was a partial failure. A second field near by was very seriously affected also, as well as a number of fields in the vicinity. Similar cases have been observed in a number of other states, and public sentiment favoring the eradication of the common barberry is growing rapidly. It is said that Japanese barberry does not harbor the wheat rust.

## PLACE MACHINERY IN HOUSE

Protect Valuable Implements From Exposure in Winter—Paint All Iron or Steel Parts.

(Prepared by the United States Department of Agriculture.)

The cost of machinery and implements is constantly increasing. Prepare now to protect implements and machinery from exposure during the coming winter. As far as possible all implements should be placed under a dry shed. Woodwork should be painted and all exposed iron and steel parts should be either painted or covered with grease or oil to prevent rusting.

Better Dairymen Needed.  
Not so much better cows as better dairymen is the need.

# DRUGGISTS!! PLEASE NOTE VICK'S VAPORUB OVERSOLD DUE TO PRESENT EPIDEMIC

Tremendous Demand Last Few Days Has Wiped Out Excess Stocks That We Had Estimated Would Last Until Next January. Last Week's Orders Called For One and Three Quarter Million Jars—Today's Orders Alone Amount to 932,459 Jars.

Big Shipments Are En Route to Jobbers. Until These Arrive There May Be a Temporary Shortage. All Deals Postponed—Buy in Small Lots Only.

RETAILERS CAN GET IMMEDIATE SHIPMENTS DIRECT BY PARCEL POST.

This advertisement is written on Monday, October 21st. It is directed to the attention of all distributors of Vick's Vaporub, both wholesale and retail. In an emergency such as the present epidemic—our duty—and your duty—is to distribute Vaporub in the quickest possible manner to those sections stricken by influenza. We therefore, call your careful attention to the following:

### DANGER OF SHORTAGE IF SUPPLY IS NOT CONSERVED

On October 1st we had on hand, at our factory and in twenty warehouses scattered over the country, sufficient Vaporub to last us, we thought, until January 1st, allowing for a 50 per cent increase over last year's sales, and not counting our daily output. This big excess stock had been accumulated during the summer months.

Then this epidemic of Spanish influenza hit us—and in the last ten days this stock has vanished. At first we thought this tremendous demand would last only a few days, but the orders have run:

Wed., Oct. 16.....18,504 doz.  
Thur., Oct. 17.....25,323 doz.  
Fri., Oct. 18.....39,256 doz.  
Sat., Oct. 19.....45,833 doz.  
Mon., Oct. 21.....77,705 doz.

Up to Saturday, October 19th, we have actually shipped for this month \$400,284.10, or over two million jars of Vaporub.

### THE PROBLEM NOW IS TO DISTRIBUTE VAPORUB QUICKLY.

Most of this tremendous quantity is still en route to the jobbers, but freight and express are both congested nowadays, and it may be some time before this supply reaches the jobbers. In the meantime, therefore, it is necessary that we distribute, as widely as possible, the stock that we are manufacturing daily, together with that now on the jobbers' and retailers' shelves, in order that it may get to the influenza districts quickly. Our normal output is about 4,000 dozen per day. We are putting on a night shift, but it will be a little while before that is producing.

### WHAT WE ASK THE WHOLESALE DRUGGIST TO DO.

Last Saturday we notified all of our jobbers, by Special Delivery, as follows:

1st—Deals and quantity shipments of all kinds are cancelled. Fill no quantity orders of any kind, whether taken by our salesman or by your own. Sell in small lots only.  
2nd—Order from us in as small

THE VICK CHEMICAL COMPANY, GREENSBORO, N. C.



## "SPOHN'S"

Is the RIGHT Kind. Horsemen Know This When They Have Once Tried It.

All druggists, horse goods houses and manufacturers sell it. SPOHN MEDICAL CO., Goshen, Ind., U. S. A.

Just It. "Someone last night stole my incubator." "What a fowl wrong!"

Specification. "The young lady you admire has a regular flower face." "Yes; isn't she a daisy?"

# Acid-Stomach Makes Millions Old Before Their Time

What is it that robs so many people of their vitality, youth and good looks—makes them all in and decrepit, years before their time? Some say it's rheumatism that is ailing them. Others complain of chronic stomach or liver trouble. Others are bilious. Life is a burden to multitudes of dyspeptics. Severe headache, extreme nervousness, insomnia, mental depression, melancholia, anemia, dizziness, vertigo, heart and chest pains, constipation, etc., claim other multitudes. Sometimes these people are downright sick. More frequently they are just weak, sickly and unwell, not knowing exactly what is the matter with them. Nearly always they resort to medicines of one kind or another in the hope of getting back their health and strength. And nearly always they are disappointed, because medicines don't build strength unless they set the stomach free from acidity, allowing it to take full strength out of the food eaten.

What is it that causes teeth to decay? Dentists say—acid mouth—that the acid formed by the fermentation of small particles of food lodged in the teeth is powerful enough to eat right through the hard enamel. An acid-stomach presents a similar condition. Excess acid retards digestion. Food in the stomach rots and ferments, causing pain. Gases affect the heart action. The intestines become the breeding place for countless millions of deadly germs or toxic poisons. These poisons are carried by the blood

into every part of the system. The famous scientist, Metchnikoff, said— "If the system could be kept free from these toxic germs, people might easily live a hundred years or more."  
The only safe thing to do is to rid the stomach of its excess acid at once. A way has been found in the wonderful preparation, called EATONIC—a compressed compound that absorbs the excess acid and carries it away through the bowels. Thousands upon thousands now know of EATONIC and its amazing power to clean out the excess acid and leave the stomach sweet, cool and strong—giving it a chance to properly digest food so that you get full strength of what you eat and in this way help Nature build up vigorous health, strength and vitality to take the place in a few days, of sickness, lassitude, weakness.

EATONIC is worth your trial. Its possibilities for restoring health, vigor, energy and vitality are beyond telling you in mere words—you must "just try it."  
EATONIC is absolutely guaranteed. So get a big 50c box from your druggist. If it does not help you your money will be refunded. If your druggist does not keep EATONIC, send your name and address to the Eaton Remedial Company, 1018 S. Wabash Ave., Chicago, Ill., and they will at once mail you a 50c box and you can send them the money for it after you receive it.