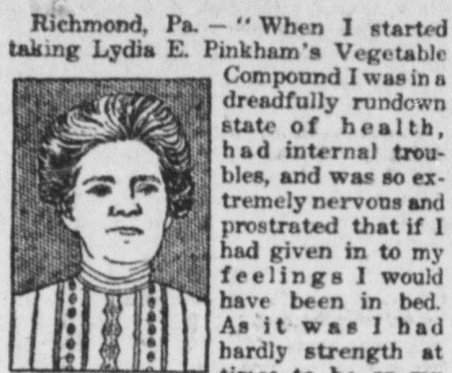


WOMAN WOULD NOT GIVE UP

Though Sick and Suffering; At Last Found Help in Lydia E. Pinkham's Vegetable Compound.



Richmond, Pa. — "When I started taking Lydia E. Pinkham's Vegetable Compound I was in a dreadfully rundown state of health, had internal troubles, and was so extremely nervous and prostrated that if I had given in to my feelings I would have been in bed. As it was I had hardly strength at times to be on my feet and what I did do was by a great effort. I could not sleep at night and of course felt very bad in the morning, and had a steady headache.

"After taking the second bottle I noticed that the headache was not so bad, I rested better, and my nerves were stronger. I continued its use until it made a new woman of me, and now I can hardly realize that I am able to do so much as I do. Whenever I know any woman in need of a good medicine I highly praise Lydia E. Pinkham's Vegetable Compound." — Mrs. FRANK CLARK, 3146 N. Tulip St., Richmond, Pa.

Women Have Been Telling Women

for forty years how Lydia E. Pinkham's Vegetable Compound has restored their health when suffering with female ills. This accounts for the enormous demand for it from coast to coast. If you are troubled with any ailment peculiar to women why don't you try Lydia E. Pinkham's Vegetable Compound? It will pay you to do so. Lydia E. Pinkham Medicine Co., Lynn, Mass.

Kill the Flies Now and Prevent Disease.

A DAINY FLY KILLER will do it. Kills thousands. Lasts all season. All dealers or six cent express paid for. H. SOMERS, 150 De Kalb Ave., Brooklyn, N. Y. Adv.

That London Fog.

Church—What has London got to combat the German Zeppelins?
Gotham—Why, her well-known fog.

YOUR OWN DRUGGIST WILL TELL YOU

Try *Marine Eye Remedy* for Red, Weak, Watery Eyes and Granulated Eyelids. No Smarting—Just Eye Comfort. Write for Book of the Eye by Mail Free. *Marine Eye Remedy Co.*, Chicago.

Probably every man on earth has rheumatism, dyspepsia or some other hobby.



Rheumatism For Young and Old

The acute agonizing pain of rheumatism is soothed at once by Sloan's Liniment. Do not rub—it penetrates to the sore spot, bringing a comfort not dreamed of until tried. Get a bottle today.

RHEUMATISM Here What Others Say:

"I highly recommend your Liniment as the best remedy for rheumatism I ever used. Before using it I spent large sums of money trying to get relief of the misery and pain in limbs and body, so I tried your Liniment both internal and external and I found quick relief, and now am well and strong again." — Tom Curtis, 286 N. 16th St., Springfield, Ill.

SLOAN'S LINIMENT

for neuralgia, sciatica, sprains and bruises.

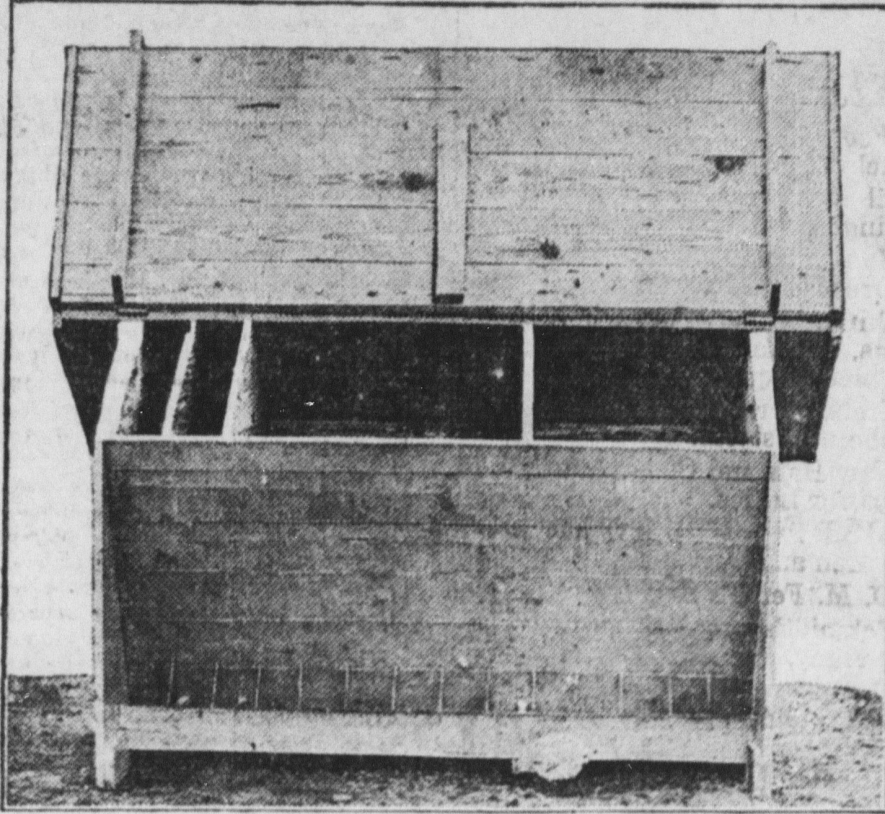
All Druggists, 25c. Send four cents in stamps for a TRIAL BOTTLE.

Dr. Earl S. Sloan, Inc., Philadelphia, Pa.

Tutt's Pills

To cure constiveness the medicine must be more than a purgative; it must contain tonic, digestive and cathartic properties.

DRY FEEDING BECOMING QUITE POPULAR



Ideal Type of Feed Hopper for Poultry on Range, With Lid Thrown Back Showing the Construction of Bins.

(By MICHAEL K. BOYER.)

Of late dry feeding is becoming quite popular, although it is not a new idea in the poultry ranks. Fully 25 years ago the matter was agitated and adopted by some poultrymen, but as a general thing it was not favorably received.

The argument used today in favor of dry mash and whole grain diets are: First, after fowls become used to it, they will prefer the ground grain dry to that which is either cooked or steamed; second, it is a labor-saving method; third, it keeps fowls in a more healthy condition; and fourth, better fertility to the eggs.

At first the fowls will not take very kindly to the dry feed. As meat scrap is mixed with it, they will pick out all such, then probably the corn meal, or some may prefer the bran meal, but all of it is seldom consumed until the fowls become accustomed to it.

Gradually they will eat more and more of it, finally cleaning up the trough. Another benefit is that after eating a few mouthfuls they will repair to the drinking vessel and secure several swallows of water, then back again to the trough and so on during the entire meal.

It is claimed that more water is consumed by dry-fed fowls, and as water enters largely into the composition of eggs, increased egg production should be the result.

The method is a great labor saver. It is possible to both feed and water the stock in the same time it takes to prepare the wet mash and feed it.

The writer prefers feeding the dry mash in troughs instead of hoppers, unless a hopper is used that will be proof against rats and mice. Such a hopper must be made of galvanized iron, and should be made to close at sight and be opened in the morning.

If large enough to hold sufficient material for several days' feeding, still more labor can be saved.

There is also a decided advantage in the system from a health standpoint. There is not so much danger of overfat hens, and consequently there will be fewer soft-shelled and deformed or lill-shaped eggs.

There will be fewer cases of bowel troubles and less trouble with indigestion. Wet mash allowed to remain in troughs any length of time during the hot weather will sour, which is the cause of many cases of sickness.

For growing chicks it is recommended. They eat a few mouthfuls and then take a swallow of water and scamper off for a run. In a few moments they return and repeat the dose.

They never gorge themselves, and when they feel a little hungry a little food helps them out.

At night an extra allowance of food is placed in small boxes in their houses, so that the youngsters can help themselves at break of day. Nothing gives a chick a worse setback than pining for food.

But we like only the mash to be fed fowls in that way. The whole grain should be strewn along some light litter, like leaves or cut straw.

Dark Barns a Menace.

Well lighted horse or dairy stalls are even more imperative during the winter months than in the summer, since the absence of light lowers the temperature. Then, leading the animals forth into the glare of day after their long confinement in the gloomy stalls is liable to bring on defective eyesight, while the poorly lighted stalls also contribute to the advancement of almost every known ailment of live stock.

Sheep as Weed Destroyers.

Sheep will eat more than a hundred kinds of weeds that are unpalatable to cattle.

THE MARKETS

NEW YORK.—Wheat—Spot irregular; No. 2 red, 160 3/4c. and No. 2 hard, 164 3/4c. all rail, c 1 f track, export; No. 1 Northern Duluth, 155 3/4c. and No. 1 Northern Manitoba, 164 c 1 f Buffalo, opening navigation.

Corn—Spot firm; No. 2 yellow, 83 3/4c. c 1 f to arrive.

Hay—Firm; No. 1, \$1.07 1/2; No. 2, 95c; No. 3, 90c; shipping, 80c@85c.

Butter—Creamery extras (92 score), 30 3/4c; creamery (higher scoring), 31 c@31 1/2c; firsts, 28c@30c; seconds, 25c@27 1/2c.

Eggs—Fresh gathered, extras, 22c; storage packed, extra firsts, 21c@21 1/4c; do, firsts, 20 1/2c@21c; regular packed, extra firsts, 21c; firsts, 19 1/2c@20 1/2c; nearby, hennery whites, fine to fancy, 22 1/2c@23c; nearby, hennery whites, 22 1/2c@23c; State, whole milk, fresh, specials, 15c@15 1/4c; do, average fancy, 14 1/2c.

Live Poultry—Steady; Western fowls, 16c; turkeys, 16c@18c. Dressed poultry firm; Western frozen-roasting chickens, 17c@21c; fresh fowls, 14c@18c; turkeys, 13c@20c.

PHILADELPHIA.—Wheat—Car lots, in export elevator, No. 2 red, spot, \$1.52@1.54; No. 2 red Western, \$1.59@1.61; round lots, in export elevator, No. 2 red, spot and April, \$1.53 1/2@1.55 1/2; No. 2 red Western, \$1.58 1/2@1.63 1/2; No. 1 Northern Duluth, \$1.59 1/2@1.64 1/2.

Corn—Car lots for local trade, as to location, No. 2, yellow, 80c@81c; steamer yellow, 78c@79c; No. 3 yellow, 76c@77c; No. 4 yellow, 74c@75c; sample yellow, 59c@73c; new cob, per seventy pounds, 77c@78c; for car lots in export elevator, No. 2 spot and April, 75c@76c; steamer, 73 1/2c@74 1/2c; No. 3, 72 1/2c@73 1/2c.

Oats—No. 2 white, 63 1/2c@64c; standard white, 62 1/2c@63c; No. 3 white, 61 1/2c@62c.

Butter—Western, fresh, solid packed creamery, fancy, special, 33c; extra, 31c; extra firsts, 29c; firsts, 28c@29c; seconds, 25c@27c; ladle-packed, 26c@27c; nearby prints, fancy, 34c; average extra, 33c; firsts, 29c@31c; seconds, 26c@28c; jobbing sales of fancy prints, 38c@41c.

Eggs—Nearby, extra, 22c per dozen; firsts, 16.15c per standard case; nearby, current receipts, 16c per case; Western, extra firsts, 16.15c per case; do, firsts, 16c per case; Southern, 15.40c@15.70c per case; fancy, selected, candled and fresh eggs, jobbing at 23c@25c; duck eggs, as to quality, 26c@30c.

Cheese—New York, full cream, fall make, choice, 16 1/2c@17c; do, fair to good, 16c@16 1/2c; do, do, current makes, 15 1/2c@16c; do, do, part skims, 8c@15c.

BALTIMORE.—Wheat—No. 2 red spot and April, 155 1/2c; May, 156 1/2c; No. 2 red Western spot and April, 158 1/2c.

Corn—Spot and April, 75 1/2c; May, 77c.

Oats—Standard white, 63c@63 1/2c; No. 3 white, 62 1/2c@63c.

Hay—No. 1 timothy, \$19; No. 2 do, \$18@18.50; No. 3 do, \$15.50@17; light clover mixed, \$18@18.50; No. 1 light clover mixed, \$18; No. 2 do, \$15.50@17; choice clover, \$18@18.50; No. 1 clover, \$17.50@18; No. 2 do, \$15@16.50; No. 3 do, \$11.50@14.

Straw—No. 1 straight rye, \$11@11.50; No. 2 do, \$10@10.50; No. 1 tangled rye, \$10; No. 2 do, \$8@9; No. 1 wheat, \$8@8.50; No. 2 do, \$7@7.50; No. 1 oat, \$9.50@10; No. 2 do, \$8@8.50.

Butter—Separator—Extras, 30c@31c; firsts, 29c@29.5c; 1/2 lb.—Extras, 31c@32c; firsts, 26c@31c; Prints, 1 lb.—Extras, 31c@32c; firsts, 30c@31c; Blocks, 2 lb.—Extras, 30c@31c; firsts, 29c@29.5c.

Dairy Prints, Maryland, Pennsylvania and Virginia—Extras, 20c@21c; firsts, 19c@20c; Iowa and N. W. ladle—Extras, 22c@23c; firsts, 21c@22c. Storepacked, firsts, 28c; Maryland and Pennsylvania, rolls, 19c@20c; Ohio, rolls, 18c@19c; West Virginia, rolls, 18c@19c.

Eggs—Maryland, Pennsylvania and nearby firsts, 19 1/4c; Eastern Shore Maryland and Virginia, firsts, 19 1/2c; Western, Ohio, firsts, 19 1/2c; West Virginia, firsts, 19 1/2c; Southern, North Carolina, firsts, 18 1/2c; duck eggs, nearby, 22c. Recrated and rehandled eggs, 1/2c higher.

Live Poultry—Chickens, young, large, smooth, 18c@20c; do, winter, 2 lbs and under, 23c@25c; do, rough and stagg, 14c@15c; do, old hens, 4 lbs and over, 15c@15 1/2c; do, lighter fowl, 15c@14c; do, old roosters and stags, 10c@11c. Ducks, muscovy and mongrel, 15c; do, puddle, 3 lbs and over, 15c; do, white Pekings, 15c@16c; do, Indian runners, 15c@14c; do, small poor, all kinds, 12c@13c. Pigeons, per pair, old, 25c@30c; do, young, 25c@30c. Guinea fowl, young, each, over 1 1/2 lbs, 35c; do, young, smaller, each, 25c; do, old, each, 25c.

Dressed Hogs—Choice Western Maryland and Pennsylvania light weights, 8@8 1/2c; choice medium weights, 7 1/2c@8c; heavy weights, smooth, 6 1/2c@7c; stags and sows, 5c@6c; heavy old boars and rough stock, 5c.

PITTSBURGH, PA.—Cattle steady; choice, \$8.25@8.40; prime, \$7.90@8.20. Sheep—Steady; prime wethers, \$6.50@6.75; culls and common, \$3@4.50; lambs, \$6@8.85; veal calves, \$11@11.50.

Hogs—Prime heavies, \$7.35; medium and heavy Yorkers, \$7.70@7.75; light Yorkers, \$7.65@7.70; pigs, \$7.50@7.60; roughs, \$6@6.50.

Live Stock

LOW ROUND TRIP FARES TO CALIFORNIA'S EXPOSITIONS AND THE PACIFIC COAST

Low round trip fares are now in effect via the scenic Highway of the Northern Pacific Ry. to California's Expositions via the North Pacific Coast. These tickets permit liberal stop-overs and enable the tourist to include both Expositions as well as a stop-over at Yellowstone National Park via Gardiner Gateway.

If you will advise when you will plan your western trip, I will be pleased to quote rates, send a copy of our handsome Expositions folder as well as Yellowstone National Park and travel literature, and assist you in any way possible in planning your 1915 vacation trip. A. M. Cleland, General Passenger Agent, 517 Northern Pacific Ry., St. Paul, Minnesota.—Adv.

Marital Diplomacy.

Plunger—I felt awfully sorry for a poor guy down at the exchange today. He lost five thousand on cotton and all the boys were guying him, and as he started off home they taunted him with the prediction that his wife would land on him roughly. The poor chap acted as though he felt pretty bad about it.

Mrs. Plunger (sympathetically)—Poor fellow! No doubt he used his best judgment, and if his wife turns on him because of his reverses she is not worthy to be called wife. But who was the man?

Plunger—Why—er—it was me—Woman's Home Companion.

Important to Mothers

Examine carefully every bottle of CASTORIA, a safe and sure remedy for infants and children, and see that it bears the Signature of *Dr. J. C. Fitcher* In Use For Over 30 Years. Children Cry for Fletcher's Castoria

An Art Suspicion.

"True art does not think of money." "No," replied the grand opera manager. "I'm expected to do the thinking. And sometimes I think brain work is as poorly paid in the art business as in another."

ELIXIR BAREK A GOOD TONIC

And Drives Malaria Out of the System. "Your 'Barek' acts like magic; I have given it to numerous people in my parish who were suffering with chills, malaria and fever. I recommend it to those who are suffering and in need of a good tonic"—Rev. St. Barnabas, St. Stephen's Church, Perth Amboy, N. J. Elixir Barek, 50 cents, all druggists or by Parvex Post, prepaid, from Kiococski & Co., Washington, D. C.

The Bill Climbed.

"I suppose you climbed the Alps when you were abroad?" "No, just ran up a bill, that was all."

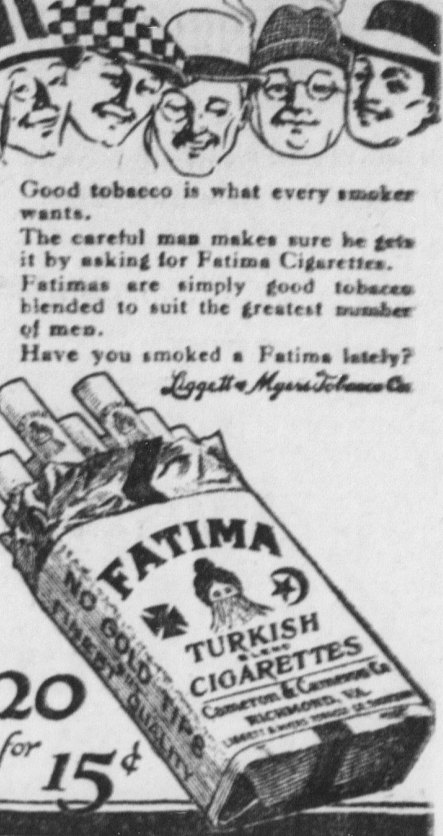
DON'T VISIT THE CALIFORNIA EXPOSITIONS

without a supply of *Allen's Foot-Ease*, the antiseptic powder to be shaken into the shoes, or dissolved in the foot-bath. The Standard Remedy for the feet for 25 years. It gives instant relief to tired, aching feet and prevents swollen feet. One lady writes: "I enjoyed every minute of my stay at the Exposition, thanks to *Allen's Foot-Ease* in my shoes." Get it TODAY. Adv.

Most of Us Are.

"Young man, are you the victim of habit?" "Of habits, sir—other people's."—Boston Evening Transcript.

FATIMAS PLEASE!



USE OUR SILO and cut your feed bill in half. Catalogue and information free. G. Elias & Son, Buffalo, N. Y. Liberal Terms to Live Agents.

Do You Want

to farm in Florida and get the best of both worlds? If so, buy rich land from L. L. BARNHILL, Charlotte Harbor, Fla.

PATENTS

Watson F. Cleburne, Patent Lawyer, Washington, D.C. Advice and counsel free. Rates reasonable. Highest references. List on request.

\$10 TO \$100

paid for Moving Pictures. Write and sell them. Details free. Progressive Film Co., 25 Rockefeller Bldg., Baltimore, Md.

LADIES!!

USE GILBERT'S JEWEL TALCUM POWDER

The Talcum of Quality, for refined people; Perfume rich, lasting, and exquisite; Powder of velvety texture.

In Glass Jar—15c. and 25c. Sold by all dealers. MADE BY GILBERT BROS. & CO. BALTIMORE, MD.

W. N. U., BALTIMORE, NO. 16-1915.

Unperturbed.

"That poem of yours about spring had some hard lines to scan. The feet were difficult to manage." "Well, in spring you must expect to have hard lines and take extra care about your feet."

The wise man really looks broken-hearted when his wife goes for a two-weeks' visit.

Wisconsin reports three cases of triplets this year.

The reasons for Certain-teed Roofing

Every buyer needs the proper assurance, when he pays for the best quality, that a second or third quality will not be delivered. The market is flooded with too many brands. Some manufacturers with poor facilities too often meet competition by cutting quality. Some wholesalers buy any old quality, put their labels on it, and say it is the best. Our Certain-teed label is backed by the written guarantee of the world's largest manufacturer of asphalt roofings. It gives each buyer the assurance wanted, and our unequalled facilities for manufacturing enable us to sell it at a very reasonable price.

These are the reasons for Certain-teed Roofing

We invite every one interested to come to our mills and see how we make the goods. We know that our Certain-teed Roofing is the best quality that we can make. It is made with that one purpose in view. We also make cheap grade, poor quality roofings to meet the demand for very temporary roofs, but the Certain-teed label goes only on our best quality, longest life product. It is the grade which carries our Company name and endorsement and guarantee—1-ply 5 years, 2-ply 10 years, 3-ply 15 years.

If you want the right quality and want to be sure you are getting what you pay for, insist on the Certain-teed label. The price is reasonable. No one can tell the quality of a piece of roofing by looking at it. The man is not living who can take three kinds of roofing of different qualities and tell with any degree of accuracy the length of time each will last on the roof. He cannot tell their relative values by looking at them. Why take the chance of guessing, when you can get the safest guarantee on the best quality goods at a reasonable price.

If for any reason you do not care for the highest quality—if you want a temporary roof, we also make goods sold at the lowest price on the market, because we have unequalled facilities and are making approximately a third of the entire asphalt roofing and building papers of the whole world's supply. Our facilities enable us to beat all competitors on price goods as well as on Certain-teed quality.

The difference between the total cost of the goods, the freight, the laying, etc., between goods of different quality and price goods is insignificant. It is much better policy to cut out the guessing and let the manufacturer of real responsibility insure you on all the vital points. He knows what he puts into the goods and what they will do—you can then insist upon getting everything as represented.

LET'S BOOST BUSINESS

Less Politics—More Prosperity

We have had enough starvation business—enough of political "cronies" of every party, with their smouldering and smoldering—enough of politicians who promise money and honor in order to get into office and then practice a kind of extra-vigilance and then pay for votes the cost of a living, whatever it may be. We don't want cheap living—we want good business and good times for everybody and if we all pull together we will get them.

The game of the politician is to promise every thing and then to get out of the picture as soon as he can. He promises and what they deliver they're worse than the business man who even advertises the quality of his goods. Let the business interests, from the laborer in the sugar-indent, from the office boy to the president, from the hired man on the farm to the owner of the farm, remember that they have a common interest in good business and a square deal in honest money. Stop listening to the false promises and don't let yourselves be misled. It can be done. No more crookedness and false promises wanted. We are going to be too busy to listen to any crookedness who promise "good business" legislation.

General Roofing Mfg. Co.

World's largest manufacturer of Roofing and Building Papers

New York City Boston Chicago Pittsburgh Philadelphia Allentown Cleveland St. Paul St. Louis Cincinnati Kansas City Minneapolis San Francisco Seattle London Hamburg Sydney