

Show us an architect who believes in keeping his plans to himself?

Putnam Fadeless Dyes are the easiest to use. Adv.

True love may be a myth, but there are a lot of mighty satisfactory imitations.

Worms expelled promptly from the human system with Dr. Peery's Vermifuge "Dead Shot." Adv.

It takes a pretty evenly balanced man to be as strong in prosperity as in adversity.

Dr. Pierce's Pleasant Pellets regulate and invigorate stomach, liver and bowels. Sugar-coated, tiny granules. Easy to take as candy. Adv.

**The Attempt.**

"Did the new actress in the party try to do the swoon well?"  
"She made a faint effort."

**Many School Children Are Sickly.**

Children who are delicate, feverish and cross will get immediate relief from Mother Gray's Sweet Powders for Children. They cleanse the stomach, act on the liver, and are recommended for complaining children. A pleasant remedy for worms. Used by Mothers for 24 years. At all Drugists. Sample FREE. Address, A. S. Omsted, Le Roy, N. Y. Adv.

**Easy to Tint Candles.**

Candles can be tinted in any color, or painted in any design by using fuchsian, methyl violet or any others of this class of colors, dissolved in wood alcohol. They may be dipped into a bath of the dye, or this may be applied with a paint brush.

**IN MISERY WITH ECZEMA**

Franklinton, La.—"About four years ago my face broke out in little red pimples. At first the eczema did not bother, but finally the pimples began itching and burning and then there came little raised places. I suffered untold misery. I scratched them until they bled and I could not sleep at night. I was ashamed of my face and I could not bear to touch it.

"I tried different remedies without result until I tried Cuticura Soap and Ointment and in six weeks they completely cured my face. That was nine months ago, and no sign has appeared since." (Signed) Mrs. Leola Stennett, Dec. 14, 1912.

Cuticura Soap and Ointment sold throughout the world. Sample of each free, with 32-p. Skin Book. Address post-card "Cuticura, Dept. L, Boston."—Adv.

**East to Butte.**

The Boston man who, when asked if he had ever been west, replied: "Yes, indeed, I've been to Albany," has a counterpart in a chap I met on my last trip to the Rockies," said a Boston copper operator at the Plaza.

"I was in Spokane, going from the hotel to the railroad station in the hotel bus. A lanky rancher from Walla Walla was beside me.

"I'm agoin' back to the ranch," he remarked. "Where are you agoin'?"

"Oh, I'm bound for Butte," said I. "Agoin' east all the way to Butte!" ejaculated the rancher. "I'd like to go with you, for I've never been east."

**"They Say! They Say!"**

Wife—The cashier at the bank says you are just the meanest, stingiest—Husband—Great Scott! Wha—what is that? He says—

"Well, he didn't say it in so many words, but that is what he meant, of course."

"Look here! What did the fellow say?"

"He asked me to endorse the check, and, when I told him I didn't know what he meant, he said he presumed I hadn't had much experience in getting checks cashed—so there!"

**Vegetable Nightcap.**

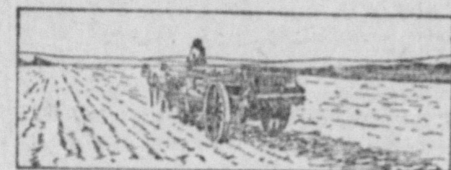
A vegetable nightcap may be seen in the agricultural museum at Washington. It is the sheath of an immense African flower, and is used by the natives as a cap. Turned up around the lower edge, it runs to a point like a tasseled nightcap. Its color is a rich brown, its texture of a fine lacelike quality, and it is strong and durable.

**PROFIT FROM MANURE**

**GREAT ANNUAL LOSS IS CAUSED BY CARELESS MANAGEMENT.**

**Well-Kept Heap Is Surest Sign of Thrift and Success in Farming—Importance of Fertilizer Is Not Fully Appreciated.**

Every crop removed from the soil takes from it materials which have been used in building up the plant's tissue. Soil with no fertility added and which annually bears a crop, must in time become exhausted of its store of valuable plant food, and unfit to bear further profitable crops. Substances which are added to the soil

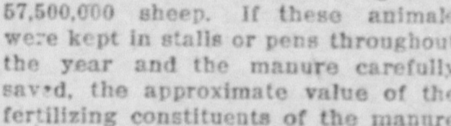


A Manure Spreader Is Very Valuable on Any Farm.

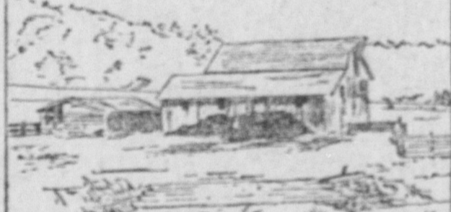
In order to replace the ingredients which have been removed by previous crops are called manures. The oldest and most common form of manure is the farm manure. Of all fertilizers this is the most popular. Early Roman writers called attention to the fact that the addition of the excreta of farm animals to the soil resulted in increased production, and from that time to the present the majority of farmers have placed their reliance on this class of manure for maintaining the fertility of the land.

A well-kept manure heap may be safely taken as one of the surest indications of thrift and success in farming. Neglect of this resource causes losses, which, though little appreciated, are vast in extent. Waste of manure is both so common as to breed indifference and so silent as to escape notice.

According to recent statistics there are in the United States, in round numbers, 23,300,000 horses, mules, etc., 70,000,000 cattle, 49,000,000 hogs and 57,500,000 sheep. If these animals were kept in stalls or pens throughout the year and the manure carefully saved, the approximate value of the fertilizing constituents of the manure



A Common Way of Losing Money—Large Losses of Plant Food Are Sure to Occur From These Piles of Manure.



**MOLE WORKS IN WINTER**

Shallow Runways Are Rapidly Extended in All Directions During the Moist and Rainy Seasons.

The mole, like the pocket gopher, is more or less active at all seasons of the year, but it is during the rainy period, when the soil is moist, that his work is pushed most vigorously. Shallow runways are then rapidly extended in all directions and old runways repaired.

When a mole makes up his mind to go in a certain direction, nothing but concrete or stone will stop him. The strength of these little animals is marvelous. They will heave up the surface of a path trodden so hard that repeated blows of a pick will be needed to break the crust.

Ordinarily the mole makes his way through the soil as a root does, or a stake when driven by the blows of a sledge. The earth is not excavated, but simply crowded aside. When the ground becomes very hard, of course, the mole is obliged to excavate the passageways and push the loose dirt out through the opening of the roof of his tunnel.

The mole keeps at work all through the winter in places where the ground is not frozen too hard. He works more frequently in the morning and evening.

Moles do very little harm to the roots of grain, grasses or vegetables, except in pushing the soil aside, and they live principally on the white grub, earth worms and beetles.

He thus proves himself to be a friend to mankind, because grubs are the greatest scourge of grass and other valuable plant roots.

**DAIRYMAN MUST WORK BRAIN**

One Farmer Succeeded on 120-Acre Farm With Sixty-three Cows Where Another Failed With Twenty.

A dairyman with a poor herd receives quite a large check at the end of the month and he may fail to distinguish between receipts and net profit. This delusion has been the cause of many a failure.

All over this country are individual dairymen whose success is noticeable. One dairyman lost a 120-acre farm keeping 20 cows that produced two to four cans of milk per day, hiring two men.

His successor on the same farm hired three men, kept 63 cows and produced 30 cans of milk per day during the flush of the season. One month's return being \$840. This is an example of brain fertility and not soil fertility.

**Buy Some Sheep.**

Why not invest a little money in a few sheep. Yearlings will give you the quickest and best results, and will do you good, but you must first do good by them.

**FEEDING ROUGHAGE TO STOCK**

**Great Danger of Animals Overloading and Seriously Impairing Their Digestive Systems.**

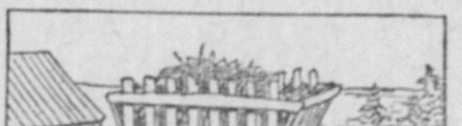
An oversupply of roughage in racks or mangers means not only a waste of feed, but there is greater danger of the animals overloading and seriously impairing their digestive systems.

It takes more feed for stock out in the open weather than in shelter, since they must consume a sufficient quantity to maintain normal flesh and keep up the heat unnecessary for supplying their bodies with warmth.

Oilmeal is so loosening in its effect that it is very easy to overfeed on this ration. While we would feed only about one-fourth pint for every one hundred pounds the animal weighs, there are cases in which this would be too much while in others it would be sufficient. When feeding it, watch the results closely and gauge your future feeding by them.

Don't get too enthusiastic in feeding oilmeal, as it is a concentrated ration. One and a half to two pounds will be sufficient for the dairy cows, along with other rations daily. Hogs will require an amount in proportion to their size, and horses will need it only occasionally—twice or three times a week—as a sort of change from the bulkier feeds.

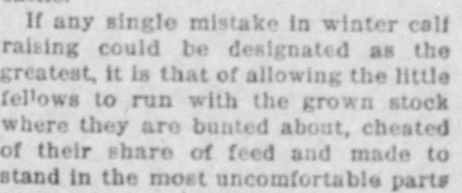
The proportion of live to dead weight in cattle and sheep varies according to the way in which the animals are fattened. It is not often that a fat beast kills over 72 per cent



A Good Feed Rack.

of its live weight, only show beasts may be reckoned to do that. The prime may kill to 72 per cent, when cake-finished. A good average is 62 per cent. Mutton sheep newly shorn will kill about 3 per cent. more than cattle.

If any single mistake in winter cell raising could be designated as the greatest, it is that of allowing the little fellows to run with the grown stock where they are bunted about, cheated of their share of feed and made to stand in the most uncomfortable parts of the sheds or barns.



**MOLE WORKS IN WINTER**

Shallow Runways Are Rapidly Extended in All Directions During the Moist and Rainy Seasons.

The mole, like the pocket gopher, is more or less active at all seasons of the year, but it is during the rainy period, when the soil is moist, that his work is pushed most vigorously. Shallow runways are then rapidly extended in all directions and old runways repaired.

When a mole makes up his mind to go in a certain direction, nothing but concrete or stone will stop him. The strength of these little animals is marvelous. They will heave up the surface of a path trodden so hard that repeated blows of a pick will be needed to break the crust.

Ordinarily the mole makes his way through the soil as a root does, or a stake when driven by the blows of a sledge. The earth is not excavated, but simply crowded aside. When the ground becomes very hard, of course, the mole is obliged to excavate the passageways and push the loose dirt out through the opening of the roof of his tunnel.

The mole keeps at work all through the winter in places where the ground is not frozen too hard. He works more frequently in the morning and evening.

Moles do very little harm to the roots of grain, grasses or vegetables, except in pushing the soil aside, and they live principally on the white grub, earth worms and beetles.

He thus proves himself to be a friend to mankind, because grubs are the greatest scourge of grass and other valuable plant roots.

**DAIRYMAN MUST WORK BRAIN**

One Farmer Succeeded on 120-Acre Farm With Sixty-three Cows Where Another Failed With Twenty.

A dairyman with a poor herd receives quite a large check at the end of the month and he may fail to distinguish between receipts and net profit. This delusion has been the cause of many a failure.

All over this country are individual dairymen whose success is noticeable. One dairyman lost a 120-acre farm keeping 20 cows that produced two to four cans of milk per day, hiring two men.

His successor on the same farm hired three men, kept 63 cows and produced 30 cans of milk per day during the flush of the season. One month's return being \$840. This is an example of brain fertility and not soil fertility.

**Buy Some Sheep.**

Why not invest a little money in a few sheep. Yearlings will give you the quickest and best results, and will do you good, but you must first do good by them.

**You'll wake up with a good taste in your mouth**

if you chew this after every meal.

The refreshing digestion aiding mint leaf juice does it.

**WRIGLEY'S SPEARMINT PEPSIN GUM**

THE FLAVOR LASTS

This clean, pure, healthful gum purifies your mouth—sweetens your breath. It's a pleasant, inexpensive, beneficial pastime. It brightens teeth besides.

**BUY IT BY THE BOX**

at most dealers for 85 cents

Each box contains twenty 5 cent packages

**Chew it after every meal**

It stays fresh until used

**Appetite Finds Ready Satisfaction**

In a bowl of

**Post Toasties**

and Cream.

Thin, crisp bits of Indian Corn—cooked and toasted so that they have a delicious flavour—

**Wholesome Nourishing Easy to Serve**

—sold by Grocers everywhere.

**Post Toasties**

and Cream.

Thin, crisp bits of Indian Corn—cooked and toasted so that they have a delicious flavour—

**Wholesome Nourishing Easy to Serve**

—sold by Grocers everywhere.

**Men Fight On Their Stomachs**

Napoleon so said. A man with a weak stomach is pretty sure to be a poor fighter. It is difficult—almost impossible—for anyone, man or woman, if digestion is poor, to succeed in business or socially—or to enjoy life. In tablet or liquid form

**Dr. Pierce's Golden Medical Discovery**

helps weak stomachs to strong, healthy action—helps them to digest the food that makes the good, rich, red blood which nourishes the entire body.

This vegetable remedy, to a great extent, puts the liver into activity—oil the machinery of the human system so that those who spend their working hours at the desk, behind the counter, or in the home are rejuvenated into vigorous health.

Has brought relief to many thousands every year for over forty years. It can relieve you and doubtless restore to you your former health and strength. At least you owe it to yourself to give it a trial. Sold by Medicine Dealers or send for free trial box of Tablets—Dr. Pierce's Invalids' Hotel & Surgical Institute, Buffalo, N. Y.

You can have Dr. Pierce's Common Sense Medical Adviser of 1008 Pages for 5c.

**Hale's Honey**

of Morehound and Tar

the best of all specifics for the prompt relief of coughs, colds and sore throat.

It soothes and heals. Sold by all druggists.

When It Aches Again Use Pike's Toothache Drops

**WANTED—Men in Ev'ry Loc'ity**

Drying & Pressing Shop. Big pay. No experience required. No. 420, 1st St., New York, N. Y.

**REAL ESTATE**

**FOR SALE—2 A. ADJOINING TOWN IN**

Nottingham Co., Va. 1 1/2 ac. cult., 1 1/2 ac. woods, outbuilds H. P. READ, Blackstone, Va.

**FOR SALE—1 1/2 A. IN HENRI CO., VA.**

near Richmond; 1 1/2 ac. cult., new 1 1/2 r. dwelling, barn, outbuilds, large orchard, stock, much, etc. W. F. GLAU, Esq., Richmond, Va.

If life is not worth living, death is not worth dying.

**Men Fight On Their Stomachs**

Napoleon so said. A man with a weak stomach is pretty sure to be a poor fighter. It is difficult—almost impossible—for anyone, man or woman, if digestion is poor, to succeed in business or socially—or to enjoy life. In tablet or liquid form

**Dr. Pierce's Golden Medical Discovery**

helps weak stomachs to strong, healthy action—helps them to digest the food that makes the good, rich, red blood which nourishes the entire body.

This vegetable remedy, to a great extent, puts the liver into activity—oil the machinery of the human system so that those who spend their working hours at the desk, behind the counter, or in the home are rejuvenated into vigorous health.

Has brought relief to many thousands every year for over forty years. It can relieve you and doubtless restore to you your former health and strength. At least you owe it to yourself to give it a trial. Sold by Medicine Dealers or send for free trial box of Tablets—Dr. Pierce's Invalids' Hotel & Surgical Institute, Buffalo, N. Y.

You can have Dr. Pierce's Common Sense Medical Adviser of 1008 Pages for 5c.

**IF YOU HAVE ECZEMA**

Send for Free Sample

of DR. HALE'S ECZEMA REMEDY, a simple, scientific, non-poisonous treatment that is proving remarkably successful and need to be taken for a few days only. It will cure the most stubborn cases of eczema, including the most obstinate cases of itching, burning, and soreness. It is sold by all druggists. Price, 25c. per bottle. Write for free sample to DR. HALE CHEMICAL CO., Dept. 77, ROSELAND, N. J.

**Why Be Heavier Than You Wish?**

If you want to reduce yourself use Ellington's Purgative. It is a safe, reliable, and effective medicine. It will purify your system, cleanse your bowels, and give you a healthy, active life. It is sold by all druggists. Price, 25c. per bottle. Write for free sample to ELLINGTON & ELLINGTON, 2881 Broadway, New York.

**PARKER'S HAIR BALM**

A toilet preparation of merit. It keeps the hair from falling out, restores its natural color, and gives it a soft, silky texture. It is sold by all druggists. Price, 25c. per bottle. Write for free sample to PARKER BROS., 239 N. 3rd St., Philadelphia, Pa.

**FREE A 2-cent tooth brush**

with each box of P-B's DENTAL CREAM. For cleaning the teeth. Delightfully pleasant to the taste. Brush and cream mailed on receipt of 2c. P. & F. BROTHERS, Governors-Baltimore, Maryland. Money back if not satisfied.

**DROPSY TREATED, usually gives quick relief.**

Relief, soon removes swelling, restores the system, often gives entire cure. In 15 to 20 days. Trial treatment 1c. Dr. THOMAS E. GREEN, Successor to Dr. H. H. Greens Sons, Box 0, Atlanta, Ga.

**Sore Throat BROWN'S TROCHES**

Coughs and hoarseness relieved. 25c. per box. John I. Brown & Son, P. O. Box 2212, Boston, Mass.

**HARRY THAW'S ESCAPE**

would make a good copy. Don't you write for the movie? Manufacturers of films and slides for \$100 for single idea. Experiments not necessary. We show you how to write and when to sell your stories. F. L. BARKER, Illustrated Book Co., PRINCE ANNE, Road 21st St., Philadelphia, Pa., Dept. 2.

**Readers of this paper desiring to buy anything advertised in its columns should insist upon having what they ask for, refusing all substitutes or imitations.**

**Sample**

BOTTLE of Cardalax, guaranteed to relieve stomach troubles. It is a powerful, non-poisonous, and safe remedy. Write for free sample to CARDALAX CO., Elkhart, Pa.

**TO BREAK UP COLDS AND GRIPPE**

Relieve the aches and pains take PARKER'S CALAMINE. It is a powerful, non-poisonous, and safe remedy. Write for free sample to PARKER BROS., 239 N. 3rd St., Philadelphia, Pa.

**EYE ACHES**

**Pettit's Eye Salve**

W. N. U., BALTIMORE, NO. 7-1914