

S. W. SMITH, Editor and Proprietor.

Entered at the Post Office in Centre Hall as Second Class mail matter.

CENTRE HALL, . . . PENN'A.

THURSDAY, NOVEMBER 7, 1912

TERMS.—The terms of subscription to the Reporter are one dollar per year in advance.

ADVERTISING RATES.—Display advertisement of ten or more inches for three or more insertions, ten cents per inch for each issue. Display advertising occupying less space than ten inches and for less than three insertions, from fifteen to twenty-five cents per inch for each issue, according to composition. Minimum charge, seventy-five cents.

Local notices accompanying display advertising five cents per line for each insertion; other wise, eight cents per line, minimum charge, twenty-five cents.

Legal notices, twenty cents per line for three insertions, and ten cents per line for each additional insertion.

CHURCH APPOINTMENTS.

Presbyterian—Centre Hall, morning: Spring Mills, afternoon.
Reformed—Union, morning: Spring Mills, afternoon: Centre Hall, evening.
Lutheran—Spring Mills, morning, communion. Preparatory services Friday and Saturday evenings. Tusseyville, no service; Centre Hall, evening.

The Borough Vote.

The election in Centre Hall was very quiet.

THE VOTE—PRESIDENT.

Taft, Republican, 27
Wilson, Democrat, 78
Chaffin, Prohibition, 4
Debs, Socialist, 1
Roosevelt, Bull Moose, 3
Roosevelt, Progressive, 1
Roosevelt, Washington, 15

STATE TREASURER.

Young, Republican, 43
Berry, Democrat, 76
Huntington, Prohibition, 2
Schwartz, Socialist, 1

CONGRESS.

Patton, Republican, 53
Gleason, Democrat, 59
Watt, Prohibition, 9
Fox, Socialist, 1.

ASSEMBLY.

Gramley, Republican, 52
Foster, Democrat, 65
White, Prohibition, 6
Rittenhouse, Socialist, 1

The Vote in Centre County.

Gramley for the legislature is elected over Foster, by a majority of 171. The vote in the county was light for all candidates. Many Democratic voters remained in the corn fields. The following is the vote for the several candidates:

Taft 1496
Wilson 3457
Roosevelt 2732
Patton 3596
Gleason 3248
Gramley 3575
Foster 3404

Focht is defeated.

Armageddon.

Battling for the Lord.

What's the matter with Theodore?

We are now ready for the next political fakier that comes down the pike.

The Bull Moosers have no use for their antlers now that the election is over.

We now know what happened on Tuesday, and also know how good our judgment as to the result was.

The best news on Wednesday afternoon was this electoral strength: Wilson, 399; Roosevelt, 120; Taft, 20.

It is all over now, and it is some satisfaction in having remained good and true to the principles you formerly believed in.

It will be four years more until we can get another chance to vote for president. By that time, perhaps, we may be able to cast the ballot direct for the candidate.

Colyer.

Miss Mary Kline, of Centre Hall, spent Sunday with Miss Blanche Reiber.

Mrs. George Spangler and Mrs. Almira Moyer spent a few days at the J. N. Moyer home.

Mr. and Mrs. C. S. Bodorf spent Sunday with Mr. and Mrs. Charles Ramer, of Milroy.

Miss Lillian Gettling, left this week for Braddock where she expects to spend some time.

Mr. and Mrs. A. B. Lee and Mr. and Mrs. Ebon Bower, of Bellefonte, spent Sunday at the James Swabb home.

Mrs. Robert Glasgow and daughter Dorothy and Miss Ida Klinefelter spent Sunday with friends at Madisonburg.

Mrs. Marie Wagner left for Altoona where she expects to spend a few days with her son and other relatives at that place.

Mr. and Mrs. Daniel Royer and family, of Reedsville, spent Sunday in Centre county. They were accompanied to their home by the latter's mother, Mrs. Susan Long, who expects to spend a few days with her children.

Read the Goodhart furniture store advertisement. It is worth the reading.

WILSON AND MARSHALL
SWEEP THE NATION

Democrats Carry New York and Many Usually Republican States.

Successful Candidates Will Have Big Majority in Electoral College.

New York, Nov. 6.—Woodrow Wilson has been elected president of the United States. The indications are that the Democratic majority in the electoral college will be overwhelming.

Governor Wilson has carried Maine, Massachusetts, Connecticut, New Jersey, New York, Ohio, Indiana, Wisconsin, Kentucky, Maryland, Tennessee, Nebraska, and Oregon, all the southern states, and has probably carried Missouri, Iowa and the Dakotas.

In 1908 Taft carried Illinois by 179,122, Indiana by 10,731, Maine by 31,584, Maryland by 805, Massachusetts by 110,423, Connecticut by 44,560, Michigan by 159,809, Missouri by 629, New Jersey by 82,769, New York by 202,602, Ohio by 69,591, Oregon by 24,481, Pennsylvania by 297,001, South Dakota by 27,270, North Dakota by 24,795, Iowa by 74,429, Wisconsin by 81,115 and Vermont by 23,056.

New Mexico, which the Progressives thought was sure for Roosevelt, has been carried by Wilson. California is safely for Roosevelt, but in North Dakota, which the Democrats thought was safe for Wilson, seems to be about equally divided between Taft and Roosevelt.

Wilson has carried Missouri by 20,000. Major has been elected Democratic governor. The returns also show that both the upper and lower branches of the Missouri legislature will be controlled by the Democrats.

In California one of the interesting features of election day was the part taken by the women in their first presidential election. In Los Angeles the vote of the women was extraordinarily heavy and was heavily Progressive. In San Francisco there were many women clerks of election, and in one district eight women did picket duty to prevent the election of Wolf for state senator and the constitutional amendment permitting the re-establishment of race tracks, which Wolf espoused.

The returns from Louisiana have brought sore disappointment to the Progressives of that state. The strong anticipated anti-Roosevelt sentiment seems to have eaten into normal Democratic pluralities by less than 10 per cent. In many parts of the state Debs ran ahead of Taft.

In Indiana the Democratic governor is elected. Beveridge has been defeated and the legislature is Democratic.

Roosevelt carried Michigan by from 75,000 to 100,000. Ferris, Democrat, for governor, was elected by 25,000 plurality.

The Democratic victory in many of these rock-bound Republican states was due entirely to the split in the Republican party and to the candidacy of ex-President Roosevelt. In most of these states Roosevelt got the labor vote and the radical Republican vote which has been dissatisfied with the Taft administration and the Payne-Aldrich law. In other words, Colonel Roosevelt for the time being at least has practically annihilated the Republican party in the states mentioned.

In all the states where Roosevelt and the Progressive candidates for governor have run second to Wilson and the Democratic candidates for governor the Progressive party will have control of the election machinery over the Republicans beginning with next year's municipal campaigns. This control will extend to 1914 in the state elections for governor and members of the legislature.

In New York state, in all counties where Oscar Straus, the Progressive candidate for governor, has run second to William Sulzer, the Progressives will have control of the election machinery over the Republicans, beginning with next year's municipal elections. This control will also extend, according to law, to 1914, when a governor is to be elected and a legislature is also to be elected which will elect a United States senator to succeed Elihu Root.

WILSON CARRIES BAY STATE

Democrats Also Re-elected Governor Foss.

Boston, Nov. 6.—As was predicted before the polls opened, Wilson and Marshall carried Massachusetts by a substantial plurality, and for the first time in the history of the Bay State its electoral votes will be cast for Democratic candidates for president and vice president.

Foss and Walsh, the Democratic candidates for governor and lieutenant governor, were also successful at the polls, the third successive time that the former has been elected and the first time for a great many years that a Democrat has been chosen for the second highest office in the state.

The presence of Colonel Roosevelt's name on the ticket practically split the Republican vote in two. The candidacy of Charles S. Bird, Progressive nominee for governor, pulled many thousands of votes from Joseph Walker, the Republican nominee.

Returns from the congressional districts do not change the political complexion of the congressional delegation.

The vote on candidates for the legislature have not been sufficiently tabulated yet to indicate how it stands, but if the Democrats control the legislature it means the election of John F. Fitzgerald, mayor of Boston, as the United States senator to succeed W. Murray Crane.

Taft ran second to Wilson in the state, but Colonel Roosevelt was a close third.

PENNSYLVANIA IN DOUBT

Result in Keystone State Lies Between Wilson and Roosevelt.
Philadelphia, Nov. 6.—The Pennsylvania electoral vote appears to be swinging from the Roosevelt into the Wilson column.

With a little less than half of Philadelphia to hear from, the Bull Moose appears to be losing ground and he may not lead Wilson by more than 8000 in the city, with President Taft leading his opponents by about 16,000 votes.

Taking these figures as a criterion, Governor Wilson will have to overcome a lead of about 28,000 votes in the state outside of Pittsburgh and Philadelphia. He may be able to do it, but the count will be very close.

The Democratic state committee, which claimed the state by over 60,000 for Wilson, has revised its figures and now thinks the Democratic candidate may win by 20,000.

The four Progressives running for congress on the Republican ticket are elected. In the rock-bound Republican districts where the Progressives failed to place a congressional candidate in the field, the Republican candidates were elected.

The Republican state ticket, consisting of state treasurer and auditor general, is elected. The Socialists polled a large vote in the western end of the state, but the prediction that Debs would poll more votes than President Taft is far from being realized.

ILLINOIS FOR ROOSEVELT

Dunne, Democrat, Elected Governor Over Ceenen, Republican.

Chicago, Nov. 6.—Colonel Roosevelt has carried Illinois by 115,000 plurality. He carried Chicago by a plurality of 15,000, and had 100,000 in the other counties, Wilson running second.

Dunne, the Democratic candidate for governor, has carried Chicago over Ceenen, Republican, by 65,000 plurality. Funk, Progressive, apparently has received about 40 per cent of the Republican vote and is third in the race. Dunne carried the state by 120,000.

One ward of Rockford barely missed being unanimous in its support of Roosevelt, and in another he was out of halting distance. Incomplete figures from Galesburg gave him twice the vote cast for Taft and Wilson combined.

These seem to show that no considerable portion of the Democratic vote has been cast for president, and that if there was a serious break in the Democratic ranks by foreign born voters it was in favor of Roosevelt and not in favor of Taft.

OHIO FOR WILSON

The Democratic National and State Tickets Win.

Columbus, O., Nov. 6.—Wilson has carried Ohio by a plurality of 125,000 and Cox, the Democratic candidate for governor, is elected by an even greater plurality.

The Democrats have elected their state ticket complete and have re-elected their eighteen out of twenty-one old congressional districts, and probably added one or two more besides carrying the new district at large.

They have also elected a large majority in both houses of the assembly.

One of the most bitter fights was for congressman in the Twelfth district, where from indications C. L. Brumbaugh, Democrat, endorsed by the Progressives, has beaten E. L. Taylor, Jr., who has represented the district for six years.

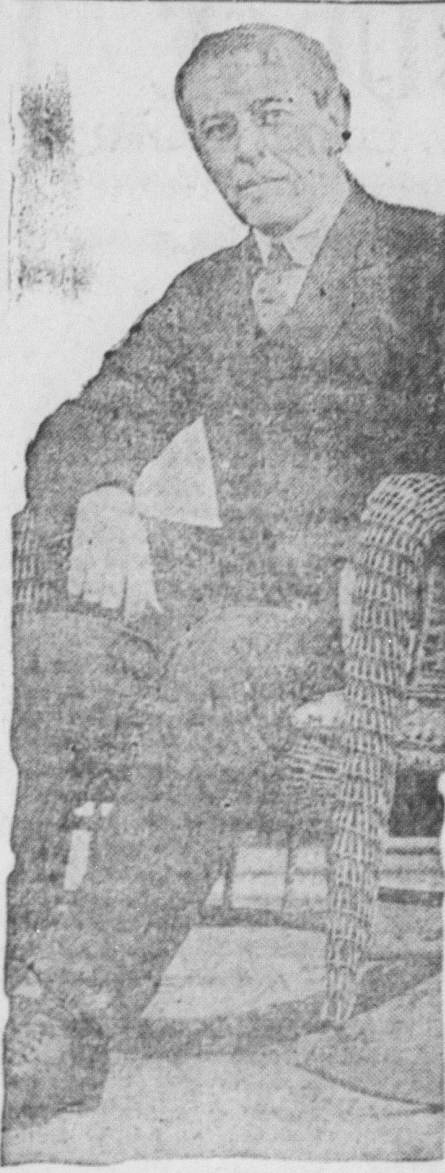
West Virginia For Wilson.

Wheeling, W. Va., Nov. 6.—Republican leaders in the state concede that Wilson has carried the state, but they claim that the Republicans have elected Howard Sutherland as congressman-at-large. Democrats concede the election of Dr. Hatfield as governor of West Virginia over W. R. Thompson, Democrat. Socialists polled a large vote in the coal fields. Liquor men admit that the state has gone dry by a large majority.

Roosevelt Carries Oyster Bay.

Oyster Bay, N. Y., Nov. 6.—Colonel Roosevelt carried Oyster Bay, his home town, by a plurality of 292 over Wilson, the vote standing: Roosevelt, 510; Wilson, 218; Taft, 87. The colonel's own election district voted as follows: Roosevelt, 311; Wilson, 86; Taft, 28.

WOODROW WILSON.
Jersey Governor
Elected President
By Big Majority.



© 1912, by American Press Association.

HOW THE SOUTH VOTED

The Usual Democratic Majorities Returned in Dixie.

Austin, Tex., Nov. 6.—Woodrow Wilson carried Texas by a plurality of about 160,000. The Republican and Progressive vote is close, and at this time it cannot be told who leads for second place.

GEORGIA.

Atlanta, Ga., Nov. 6.—Georgia's thirteen electoral votes will be cast for Woodrow Wilson and the state's representation in congress will remain solidly Democratic. Roosevelt polled a much larger vote than was expected and appears to lead President Taft. The Democratic plurality is about 25,000.

FLORIDA.

Jacksonville, Fla., Nov. 6.—The Democratic state and national tickets carried the state by a plurality of about 20,000. Indications are that Colonel Roosevelt polled a larger vote than President Taft.

SOUTH CAROLINA.

Charleston, S. C., Nov. 6.—South Carolina returned a majority of about 58,000 for Woodrow Wilson and elected the entire Democratic state ticket. The Progressive candidate ran second. The Republican and Socialist vote was light.

VIRGINIA.

Richmond, Va., Nov. 6.—The Old Dominion polled its usual heavy majority of about 40,000 for the Democratic ticket. The Republican and Progressive vote was light.

NORTH CAROLINA.

Raleigh, N. C., Nov. 6.—The Democratic national ticket has carried North Carolina by a majority of 20,000. The Progressives polled a large vote and claim to have run second.

OKLAHOMA.

Guthrie, Okla., Nov. 6.—Woodrow Wilson carried Oklahoma by a majority of about 10,000 over President Taft. Scott Ferris and Charles D. Carter, Democrats, are re-elected to congress. The other three districts are in doubt. The Progressive party electors were denied a place on the ticket through court action, and recently several of those nominated as Republican electors have been quoted as asserting that they would vote for Roosevelt.

No Progressive party candidates are named for state or congressional offices. The campaign has been the most spirited since Oklahoma was admitted to statehood.

ALABAMA.

Montgomery, Ala., Nov. 6.—Alabama elected Wilson electors by a majority of 50,000 and returned every Democratic congressman. President Taft was second in the running and Colonel Roosevelt a bad third.

ARKANSAS.

Little Rock, Ark., Nov. 6.—Arkansas has given Mr. Wilson a majority of 30,000.

MISSISSIPPI.

Jackson, Miss., Nov. 6.—Mississippi's ten electoral votes will go, as usual, to the Democratic candidate. There was no state election.

LOUISIANA.

New Orleans, Nov. 6.—As usual Louisiana is solidly Democratic by a majority of over 50,000. Colonel Roosevelt ran second.

CONGRESS IS DEMOCRATIC

Wilson's Followers Will Control Both Branches.

MANY LEADERS DEFEATED

Ex-Speaker Joseph Cannon Loses His Seat in Lower House, and Norris, Dixon, Bourne and Kenyon, Progressive, Are Retired From Senate.

Washington, Nov. 6.—The new congress will be Democratic in both its branches. The senate will probably stand 52 Democrats and 44 Republicans and the house 292 Democrats, 129 Republicans and 14 Progressives.

"Uncle Joe" Cannon is among the defeated, but Colonel Roosevelt's son-in-law, Nicholas Longworth, of Cincinnati, slipped by a narrow margin, as did also Sereno E. Payne, of New York, at present chairman of the minority in the house, and John Weeks, of Massachusetts.

The Democratic gain in Massachusetts was not anywhere nearly as great as the enthusiastic Bay State leaders imagined. In Ohio the indications are that the Republicans will have only two or three congressmen, while in the present house they have five. There will be eighteen Republican congressmen from New York as against fourteen in the present house.

In the senate the Progressive leaders were smitten hip and thigh. George W. Norris and Joseph M. Dixon, the national Progressive chairman, are surely defeated, as are probably Jonathan Bourne, of Oregon, and William S. Kenyon, of Ohio. Governor Stubbs, of Kansas, will probably fall on the election.

In the senate the Democratic gains are as follows:

One in Colorado, where Senator Guggenheim retires; one in Iowa, where Senator Kenyon retires; one in Montana, where Senator Dixon goes out; one in Nebraska to take the place of Senator Norris Brown; one in New Jersey to take the place of Senator Briggs, and probably one in Nevada, taking the place of Senator Massey.

In Massachusetts it is expected that on joint ballot for United States senator the legislature will be very close.

Of sixty candidates for the house of representatives so far known to be elected, 32 are Republicans, 27 are Democrats, 3 are Progressives and 1 is a Socialist. This is a gain for the Democrats and there is a possibility

that the Progressives may lose a balance of power.

The terms of thirty-one United States senators will expire on March 4, 1913. In addition to most of these, four seats now vacant were involved in the elections. Fourteen were Democrats and twenty-one Republicans. The Democrats whose present terms expire next March are: A. O. Bacon, of Georgia; Joseph W. Bailey, of Texas; John H. Bankhead, of Alabama; Jeff Davis, of Arkansas; M. J. Foster, of Louisiana; Obadiah Gardner, of Maine; Robert F. Martin, of Virginia; Robert F. Owen, of Oklahoma; Thomas H. Paynter, of Kentucky; Leroy Percy, of Mississippi; F. M. Simmons, of North Carolina; Benjamin R. Tillman, of South Carolina, and Clarence W. Watson, of West Virginia.

The Republicans whose terms next March are: William E. Borah, of Idaho; Jonathan Bourne, Jr., of Oregon; Frank O. Briggs, of New Jersey; Norris Brown, of Nebraska; Henry E. Burnham, of New Hampshire; W. Murray Crane, of Massachusetts; Shelby M. Cullom, of Illinois; Charles Curtis, of Kansas; Joseph M. Dixon, of Montana; Robert J. Gamble, of South Dakota; Simon Guggenheim, of Colorado; William S. Kenyon, of Ohio; Knute Nelson, of Minnesota; Harry A. Richardson, of Delaware; William Alden Smith, of Michigan; Francis E. Warren, of Wyoming; George P. Wetmore, of Rhode Island, and Albert B. Fall, of New Mexico.

The three vacancies in the present senate which were filled at the election were caused by the deaths of William L. Hughes, Democrat, of Colorado, and William B. Heyburn, Republican, of Idaho, and the ousting of William Lorimer, of Illinois.

Several of the senators whose terms will expire next March already have been re-elected by the state legislatures and were not therefore involved in the balloting.

Several faces that have been familiar to visitors in the senate galleries for many years will be missing after March 4 next, among them being Senator Bailey, of Texas.

Nebraska in Democratic Column.

Lincoln, Neb., Nov. 6.—Wilson has carried the state by upwards of 15,000. Stephens, Democrat, has been re-elected to congress in the Third district. Sloan, Republican, is probably elected in the Ninth. Wilson carries Lancaster, Bryan's home county. The race between Norris, Republican, and Shallenberg, Democrat, for United States senator is close.

Delaware Goes to Wilson Column.

Wilmington, Del., Nov. 6.—Indications are that Wilson will carry Delaware. Franklin Brokens, Democrat, is elected to congress.

Centre Reporter, \$1 a year, in advance.

MAKE THIS STORE YOUR STORE
Make this store your store when in need of furniture. It matters not if you buy a single piece or furnish a whole house, it will mean a saving in dollars and cents such as you can't get elsewhere.
Our stock is most complete; the latest and most up-to-date styles of the most dependable furniture, and our whole atm will be to please every one of our customers and to give them the most for their money.
Brighten up the house for the Winter. Another rocker for the living room, a table or stand, a couch, will add cheer. Perhaps a buffet or sideboard, a new table or chairs would cheer up the dining room. The bedroom could be made more comfortable by adding a new bed, a dresser, or even a good easy rocker.
If you get it here you get it Good
F. V. Goodhart
Centre Hall
The Marlin Repeating Shotgun
\$21.60
12 or 16 GAUGE
Made famous by its dependability. The solid top and side ejection keep gas and powder away from your eyes, help quick, effective ejection. Rain, sleet, snow and foreign matter can't get into the action. The mechanism is strong, simple, wear-resisting. The double extraction pull any shell instantly; two special safety devices prevent accidental discharge while action is unlocked, and an automatic recoil lock makes long firing barless. All Marlin are strongly made, fully balanced, accurate, hard hitting guns, and are the quickest and easiest to take down and clean. Illustration shows Model 24 gauge "A" 12 gauge; it has all the features that make for a perfect gun. Send three stamps postage today for our 136 page catalog describing the full Marlin line. The Marlin Firearms Co., 42 Willow Street, New Haven, Conn.