

Libby's
Sliced
Dried Beef
Old Hickory Smoked
Highest Quality
Finest Flavor
In sealed glass jars at your grocer
Ask for Libby's

TAKEN AT A DISADVANTAGE

Awkward Question Put to Witness Led to Hasty Exit From the Stand.

A colored brother was charged with violating the prohibition laws, and one of the issues in the case was whether or not certain prohibited beverages were kept in an ice box in the defendant's place of business. Jim Jones, another colored brother, was introduced as a witness for the defendant, and swore positively that no prohibited beverages were kept in the box that day; that he was in the place all the morning. On cross-examination, the city attorney asked if the ice box was open when he entered the place, or was opened in his presence. Jim promptly replied in the negative. He was then asked if he had been inside the box at any time that particular day, and replied that he had not. The city attorney then asked the all-important question of "how he knew there were no prohibited liquors in the box at that time." After considerable deliberation and a mute appeal to the defendant's attorney, which was very marked, Jim replied: "Fo' Gord, boss, I didn't know yo was gwine ter ax me dat." Jim was hastily excused by consent of all parties.—Exchange.

PERFORMING POLICE DUTY.



Officer Muldoon—That fellow's flirting with every servant girl on my beat. I'd run him in if I could charge him with some offense.

Chalker (the milkman)—That's easy. Charge him with impersonating an officer!

Might Help.

Mrs. Willis (at the Ladies' Aid society)—Now, what can you do for the poor boys at the front?

Mrs. Gillis—I was reading today where the soldiers are always making sorties. Now, why can't we get the recipes for those things and make them ourselves and send them to the boys?—Puck.

A good name being better than riches, it behooves us to take better care of our reputations.

A SPOON SHAKER.
Straight From Coffeedom.

Coffee can marshall a good squadron of enemies and some very hard ones to overcome. A lady in Florida writes:

"I have always been very fond of good coffee, and for years drank it at least three times a day. At last, however, I found that it was injuring me."

"I became bilious, subject to frequent and violent headaches, and so very nervous, that I could not lift a spoon to my mouth without spilling a part of its contents."

"My heart got 'rickety' and beat so fast and so hard that I could scarcely breathe, while my skin got thick and dingy, with yellow blotches on my face, caused by the condition of my liver and blood."

"I made up my mind that all these afflictions came from the coffee, and I determined to experiment and see."

"So I quit coffee and got a package of Postum which furnished my hot morning beverage. After a little time I was rewarded by a complete restoration of my health in every respect."

"I do not suffer from biliousness any more, my headaches have disappeared, my nerves are as steady as could be desired, my heart beats regularly and my complexion has cleared up beautifully—the blotches have been wiped out and it is such a pleasure to be well again." Name given by Postum Co., Battle Creek, Mich.

Read the little book, "The Road to Wellville," in pkgs. "There's a reason." Ever read the above letter? A new one appears from time to time. They are genuine, true, and full of human interest.



RACKS AND BUNKS FOR FEED

Dominion of Canada Live Stock Commissioner Issues Bulletin on Beef Production.

A bulletin recently published by the Dominion of Canada live stock commissioner on the subject of beef production is intended to throw light on every detail of the stock feeding business. Among other things the question of feed bunks and feed racks is taken up and the accompanying illustrations taken from this bulletin give

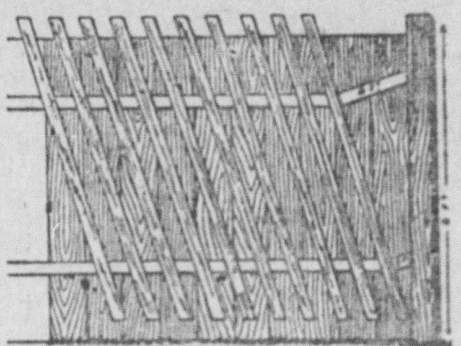


FIG 1
Hay Rack.

a clear idea as to how these are constructed.

In figure 1 we have a hay rack that has been made on a corral fence. It is made of 1x4 battens, these being high enough so that the cattle cannot bring much pressure on them. A space of about six inches is left open at the bottom between the slats and the fence, the purpose of this being to allow the old unclean hay and rubbish to fall out, thus keeping the racks clean.

In figure 2 we have the side view of a feeding trough. This trough is placed on a table three feet six inches

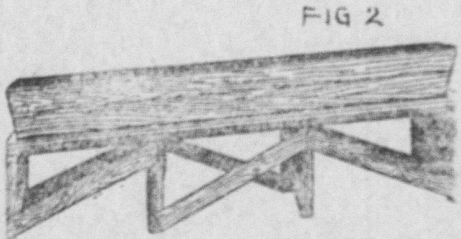


FIG 2
End View of Trough.

wide with a 2x4 or 2x6-inch scantling around the edge to keep the meal from falling or blowing off. It should be elevated 2 1/2 or three feet from the ground and placed so that the cattle can feed from both sides. Twelve feet is a convenient length, though there is

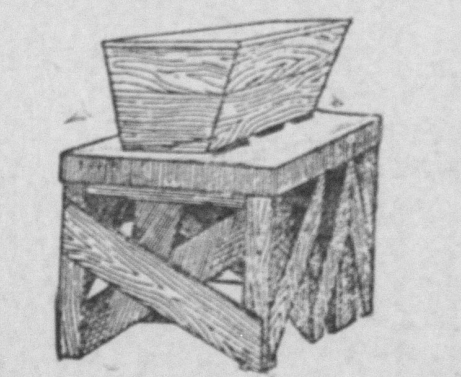


FIG 3
Side View of Feed Trough.

no reason why this trough cannot be made at least sixteen feet long. In figure 3 we have an end view of the feeding trough and table.

PROTECT STOCK FROM FLIES

Excellent Mixture to Keep Troublesome Insects From Milk Cows and Other Farm Animals.

To protect milk cows and young stock and horses from the common house fly and the more troublesome wood fly the following mixture may be used without injury to the skin of the animal to which it is applied. It is an excellent and economical remedy. It is as follows: One gallon of fish oil, four ounces of turpentine, one point of coal oil, one ounce of the oil of cedar and one ounce of carbolic acid. Mix thoroughly. Stir the contents before using. Spray a small quantity of this or apply with a paint brush to each animal once a week. A small quantity will answer.

The following formula is recommended by Professor Wheeler, of the Kansas Agricultural college: Resin, one and a half pounds; laundry soap, two cakes; fish oil, a half pint, and water to make three gallons. Dissolve the resin in solution of soap and water by boiling together. Add fish oil and the balance of water. Apply with brush.

Matteson's formula is: Fish oil, three quarts; crude petroleum, one quart, and carbolic acid, one ounce. Mix well. One-half pint will cover twelve cows; put on with spray pump. These formulas are all good. Their use will prevent the cows from being annoyed by the flies when at pasture or in the stable. Cows so treated will keep in better flesh and they will give more milk.

Trees Afford Comfort.

A few trees in the pasture add greatly to the comfort of the sheep, these days. If you can't have them, set up a few posts and cover a bit of ground over for a shed.

Disease Spreads Fast.

Diseases get a fast hold of many a flock of sheep through foul drinking water. Never give stagnant water if you can help it.

HAY AND HOG RACK COMBINED

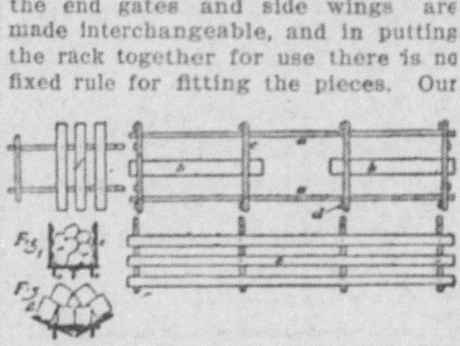
Found Very Satisfactory to Ohio Farmer Who Has Been Using One for Fifteen Years.

We have been using for the past 15 years a combination rack, which we think very well of, writes Geo. W. Brown of Hancock county, Ohio, in the Farm and Home. It is 15 1/2 feet long and 7 1/2 feet wide when wings are attached, all made from dressed red elm, painted well with venetian red paint.

The sills (a) are 2x8, and cross-sills (c) 2x5, and to each cross-sill, as shown, are clips (d) attached for setting the side wings upright (as shown in cross-section, Fig. 1), in using it for a hog rack, hauling corn, pumpkins, etc. These crosspieces are 4 1/2 feet long, and the clips set well to the ends in order to make a good width for the stock rack.

For use as a roughage rack the wings (e) are slipped in over the main sills, and beneath the planks (b), fitted to underside cross-sills, making a rack bottom with wings flaring upward (as shown in cross-section, Fig. 2), sufficient to make a very nice rack for loading baled hay or straw. The bales work inward upon the load and compact together, rather than outward, as when hauling upon a flat-bottom rack.

The same end gates (f) are used in all events, and fit snugly into clips provided at each end of the rack. Both the end gates and side wings are made interchangeable, and in putting the rack together for use there is no fixed rule for fitting the pieces. Our



Details of Combination Rack.

rack is now stored away in the wagon shed left out of the way.

We like this rack, too, for one man can handle easily any one of the pieces, and there is no heavy lifting in taking it off the wagon. Many times we use only the center portion upon the low wagon for hauling fodder.

BLOAT OF CATTLE OR SHEEP

Disease is Excessive Accumulation of Gas in Paunch—Relief Afforded by Trochar and Canula.

(By DR. F. B. HADLEY, College of Agriculture, University of Wisconsin.)

From now until the close of the pasturing season, cattle and sheep will be subject to bloat and hoven. This disease is an excessive accumulation of gas in the paunch, and is usually brought about by permitting animals to pasture on clover or alfalfa which is wet from either dew or rain. Large quantities of these feeds are greedily eaten, especially in the spring following winter feeding on dry foods, or in the late summer when the herds and flocks are turned into the second crop after the usual pastures are dried up or closely cropped.

The chief symptom is a distension of the paunch noted in the left flank. Relief, which must be immediate if effective, is best afforded by the trochar and canula. This instrument should be in the hands of every stock man. The proper place to insert the instrument is on the left side in the center of the triangular area bounded in front by the last rib, above by the lower edge of the loin muscles and behind by the hip bone. Leave the canula in position 10 or 15 minutes, reinserting in a freshly made opening if necessary. Medicinal treatment is of minor importance as a rule. Prevention is easily carried out either by limiting the time at pasture to a few minutes each day until the stock becomes accustomed to the change of feeds, or by feeding large quantities of dry hay in the morning before they are turned onto the green pasture. In either case care should be taken that no moisture is present.

PHILADELPHIA.—Wheat quiet; 1/2c lower; contract grade No. 2 red in export elevator, 89 1/2 @ 90 1/2. Corn steady; No. 2 yellow for local trade, 69 1/2 @ 70c. Oats unchanged.

Eggs firm; Pennsylvania and other nearby firsts, free cases, \$5.55 per case; do, current receipts, do, \$5.10; Western firsts, do, \$5.40; do, current receipts, do, \$4.95 @ 5.10.

Butter firm; extra Western creamery, 26c; do, nearby prints, 28c.

Cheese firm; New York full cream, fancy, new, 12 1/2 @ 13; fair to good, 12 @ 12 1/2.

Live poultry firm; fowls higher; fowls, 15 @ 16c; old roosters, 10 @ 12 1/2; spring chickens, 21 @ 22; ducks, old, 12 @ 13; do, young, 14 @ 15.

Dressed poultry firm; fresh killed fowls, nearby, 15 1/2 @ 16c; Western, 14 1/2 @ 15 1/2; old roosters, 9 1/2; broiling chickens, nearby, 25 @ 32; do, Western, 12 @ 23.

BALTIMORE.—Wheat—No. 2 red Western, 82 1/4 @ 83; contract, 90 1/2; No. 3 red, 88 1/2; steamer, No. 2 red, 86 1/2; steamer No. 2 red Western, 88 1/2.

Corn—Spot, 67c; August 67 1/2. Oats—No. 2 white, 50 1/2 @ 51c; standard white, 50 1/4 @ 50 1/2; No. 3 white, 50 @ 50 1/2.

Hay—No. 1 Timothy, \$25.00; No. 2 do, \$24 @ 24.50; No. 3 do, \$19 @ 21; choice clover mixed, \$21.50 @ 22; No. 1 do, \$21; No. 2 do, \$18.50 @ 20; No. 1 clover, \$17 @ 18; No. 2 do, \$14 @ 15.

Butter—Creamery—fancy, 24 @ 24 1/2; choice, 22 @ 23; good, 20 @ 21; imitation, 18 @ 20; prints, 23 @ 26.

PHILADELPHIA.—Wheat—Spot irregular; No. 2 red, 94 1/2 elevator and 95 1/2 f. o. b. float; No. 1 Northern Duluth, 107 1/4 f. o. b. float. Corn—Spot easy; export No. 2, 68 1/2 f. o. b. float. Futures market was without transactions, closing 1 to 1 1/2c net lower. July closed 66 1/2c; September closed 69; December closed 70; receipts, 38,600 bu; shipments, 75,892.

COMMERCIAL
Weekly Review of Trade and Market Reports.

Bradstreets says:

"Excessively hot weather; half-yearly shut-downs for repairs and inventories, vacations and holidays have combined to make last week a quiet period in general trade and industry."

"Industry generally is quiet over the turn of the year period. Caution and conservatism, with a fair degree of optimism in the face of depressing weather conditions, are in evidence in leading lines. Iron and steel, chiefly structural and fabricated lines, have a cheerful appearance, despite the below normal volume of operations. Agricultural implement makers are ordering steel bars, specifications on steel rails are coming out freely, good orders are noted for locomotives and cars; structural and fabricated steel are quite active, and, in a word, the outlook for the second half of the year is considerably better than it was in January."

"Business failures in the United States for the week were 180, as against 227 last week, 182 in the like week of 1910, 182 in 1909, 246 in 1908 and 185 in 1907."

"Wheat, including flour, exports from the United States and Canada for the week aggregate 1,347,275 bushels, against 2,078,405 last week and 1,563,775 this week last year. Corn exports for the week are 967,617 bushels, against 613,848 last week and 190,072 in 1910."

Wholesale Markets

NEW YORK.—Wheat—Spot irregular; No. 2 red, 94 1/2 elevator and 95 1/2 f. o. b. float; No. 1 Northern Duluth, 107 1/4 f. o. b. float.

Corn—Spot easy; export No. 2, 68 1/2 f. o. b. float. Futures market was without transactions, closing 1 to 1 1/2c net lower. July closed 66 1/2c; September closed 69; December closed 70; receipts, 38,600 bu; shipments, 75,892.

Oats—Spot easy; standard white, 51 1/2c; No. 2, 52; No. 3, 51; No. 4, 50 1/2. Futures market was without transactions, closing nominal. Receipts, 55,800 bu.

Butter firm; creamery specials, per lb., 26c; do, extras, 26; do, firsts, 23 1/2 @ 23 1/2; do, seconds, 20 1/2 @ 22; do, thirds, 19 @ 19 1/2; state dairy tubs finest, 23 1/2 @ 24.

Eggs steady; state, Pennsylvania and nearby hennery whites, 21 @ 25c; do, gathered whites, 19 @ 22; Western gathered whites, 17 @ 19; state, Pennsylvania and nearby hennery browns, 20 @ 22.

Poultry—Alive dull and prices unchanged. Dressed, lower; Western broilers, 17 @ 22c; fowls, 12 @ 15; turkeys, 12 @ 15.

PHILADELPHIA.—Wheat quiet; 1/2c lower; contract grade No. 2 red in export elevator, 89 1/2 @ 90 1/2. Corn steady; No. 2 yellow for local trade, 69 1/2 @ 70c. Oats unchanged.

Eggs firm; Pennsylvania and other nearby firsts, free cases, \$5.55 per case; do, current receipts, do, \$5.10; Western firsts, do, \$5.40; do, current receipts, do, \$4.95 @ 5.10.

Butter firm; extra Western creamery, 26c; do, nearby prints, 28c.

Cheese firm; New York full cream, fancy, new, 12 1/2 @ 13; fair to good, 12 @ 12 1/2.

Live poultry firm; fowls higher; fowls, 15 @ 16c; old roosters, 10 @ 12 1/2; spring chickens, 21 @ 22; ducks, old, 12 @ 13; do, young, 14 @ 15.

Dressed poultry firm; fresh killed fowls, nearby, 15 1/2 @ 16c; Western, 14 1/2 @ 15 1/2; old roosters, 9 1/2; broiling chickens, nearby, 25 @ 32; do, Western, 12 @ 23.

BALTIMORE.—Wheat—No. 2 red Western, 82 1/4 @ 83; contract, 90 1/2; No. 3 red, 88 1/2; steamer, No. 2 red, 86 1/2; steamer No. 2 red Western, 88 1/2.

Corn—Spot, 67c; August 67 1/2. Oats—No. 2 white, 50 1/2 @ 51c; standard white, 50 1/4 @ 50 1/2; No. 3 white, 50 @ 50 1/2.

Hay—No. 1 Timothy, \$25.00; No. 2 do, \$24 @ 24.50; No. 3 do, \$19 @ 21; choice clover mixed, \$21.50 @ 22; No. 1 do, \$21; No. 2 do, \$18.50 @ 20; No. 1 clover, \$17 @ 18; No. 2 do, \$14 @ 15.

Butter—Creamery—fancy, 24 @ 24 1/2; choice, 22 @ 23; good, 20 @ 21; imitation, 18 @ 20; prints, 23 @ 26.

PHILADELPHIA.—Wheat—Spot irregular; No. 2 red, 94 1/2 elevator and 95 1/2 f. o. b. float; No. 1 Northern Duluth, 107 1/4 f. o. b. float. Corn—Spot easy; export No. 2, 68 1/2 f. o. b. float. Futures market was without transactions, closing 1 to 1 1/2c net lower. July closed 66 1/2c; September closed 69; December closed 70; receipts, 38,600 bu; shipments, 75,892.

Oats—Spot easy; standard white, 51 1/2c; No. 2, 52; No. 3, 51; No. 4, 50 1/2. Futures market was without transactions, closing nominal. Receipts, 55,800 bu.

Butter firm; creamery specials, per lb., 26c; do, extras, 26; do, firsts, 23 1/2 @ 23 1/2; do, seconds, 20 1/2 @ 22; do, thirds, 19 @ 19 1/2; state dairy tubs finest, 23 1/2 @ 24.

Eggs steady; state, Pennsylvania and nearby hennery whites, 21 @ 25c; do, gathered whites, 19 @ 22; Western gathered whites, 17 @ 19; state, Pennsylvania and nearby hennery browns, 20 @ 22.

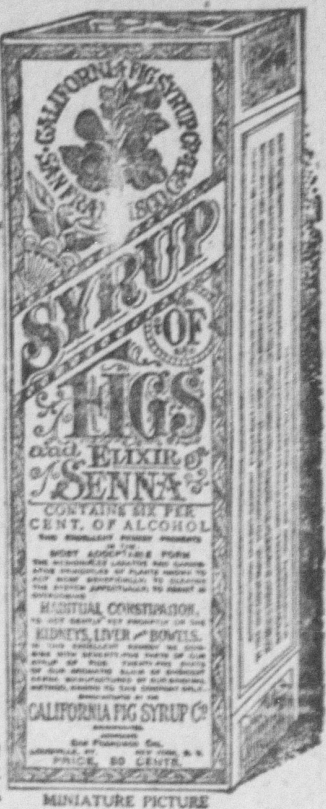
Poultry—Alive dull and prices unchanged. Dressed, lower; Western broilers, 17 @ 22c; fowls, 12 @ 15; turkeys, 12 @ 15.

PHILADELPHIA.—Wheat quiet; 1/2c lower; contract grade No. 2 red in export elevator, 89 1/2 @ 90 1/2. Corn steady; No. 2 yellow for local trade, 69 1/2 @ 70c. Oats unchanged.

MILLIONS of FAMILIES are using SYRUP of FIGS and ELIXIR of SENNA

FOR COLDS AND HEADACHES, INDIGESTION AND SOUR STOMACH, GAS AND FERMENTATION, CONSTIPATION AND BILIOUSNESS, WITH MOST SATISFACTORY RESULTS.

NOTE THE NAME
CALIFORNIA FIG SYRUP CO.
IN THE CIRCLE
ON EVERY PACKAGE OF THE GENUINE

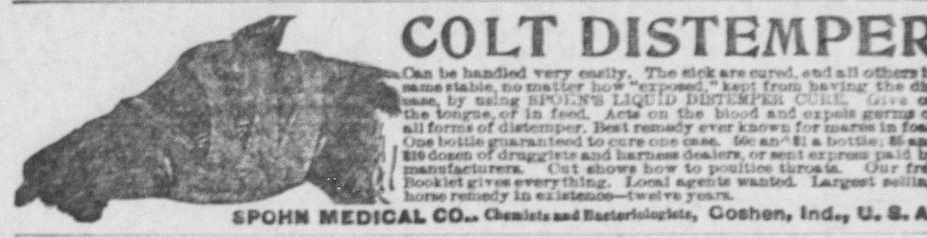


THE WONDERFUL POPULARITY OF THE GENUINE SYRUP OF FIGS AND ELIXIR OF SENNA HAS LED UNSCRUPULOUS MANUFACTURERS TO OFFER IMITATIONS, IN ORDER TO MAKE A LARGER PROFIT AT THE EXPENSE OF THEIR CUSTOMERS. IF A DEALER ASKS WHICH SIZE YOU WISH, OR WHAT MAKE YOU WISH, WHEN YOU ASK FOR SYRUP OF FIGS AND ELIXIR OF SENNA, HE IS PREPARING TO DECEIVE YOU. TELL HIM THAT YOU WISH THE GENUINE, MANUFACTURED BY THE CALIFORNIA FIG SYRUP CO. ALL RELIABLE DRUGGISTS KNOW THAT THERE IS BUT ONE GENUINE AND THAT IT IS MANUFACTURED BY THE CALIFORNIA FIG SYRUP CO. ONLY

NOTE THE NAME
CALIFORNIA FIG SYRUP CO.
PRINTED STRAIGHT ACROSS, NEAR THE BOTTOM, AND IN THE CIRCLE, NEAR THE TOP OF EVERY PACKAGE OF THE GENUINE. ONE SIZE ONLY. FOR SALE BY ALL LEADING DRUGGISTS. REGULAR PRICE 50c PER BOTTLE.

SYRUP OF FIGS AND ELIXIR OF SENNA IS ESPECIALLY ADAPTED TO THE NEEDS OF LADIES AND CHILDREN, AS IT IS MILD AND PLEASANT GENTLE AND EFFECTIVE, AND ABSOLUTELY FREE FROM OBJECTIONABLE INGREDIENTS. IT IS EQUALLY BENEFICIAL FOR WOMEN AND FOR MEN, YOUNG AND OLD. FOR SALE BY ALL LEADING DRUGGISTS. ALWAYS BUY THE GENUINE.

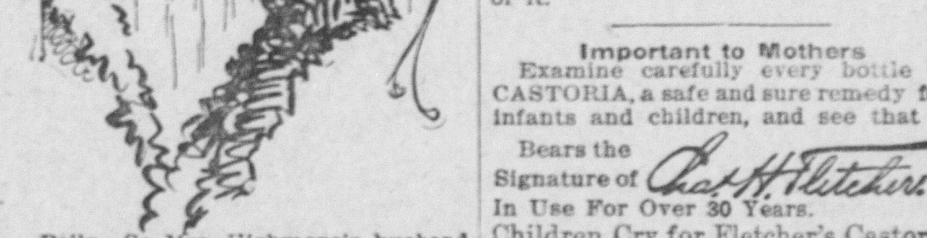
CALIFORNIA FIG SYRUP CO.



COLT DISTEMPER
Can be handled very easily. The drug is pure, and all children are stable, so mother's love, "Colt" is kept from having the disease, by using DOAN'S LIQUID DISTEMPER. COLT never gets on the lungs, or in the food. Acts on the blood and expels germs of all forms of distemper. Best remedy ever known for infants in fact. One bottle guaranteed to cure even cases. See spec. in bottles. \$1 and \$3 boxes of Druggists and harness dealers, or sent express paid by manufacturer. Cut above how to position bottle. Our free booklet gives everything. Local agents wanted. Largest selling home remedy in existence—over 25 years.

SPORN MEDICAL CO., Chemists and Electrologists, Coshen, Ind., U. S. A.

THE MARTYR.



Eat for the Fun of it. According to Mr. Herbert W. Fisher in World's Work food is of no use to us unless we enjoy it. Mr. Fisher does not, however, recommend us to be gluttons. He says the less we eat the more pleasure we shall get. The principle is that if we eat little we shall taste much. And the taste of food, not the amount, is, after all, the lure of it.

Important to Mothers. Examine carefully every bottle of CASTORIA, a safe and sure remedy for infants and children, and see that it bears the Signature of *Dr. J. C. Watson*. In Use For Over 30 Years. Children Cry for Fletcher's Castoria.

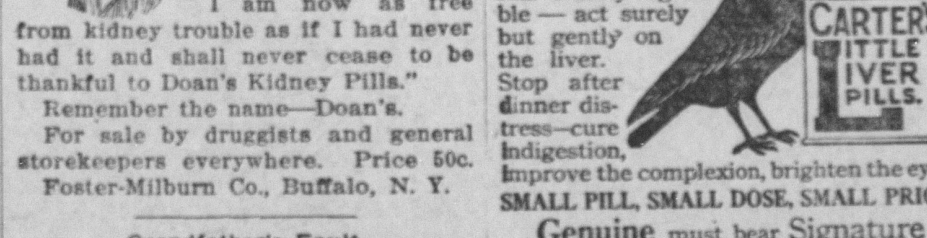
Mamma's Angel Gets Busy. Fond Mother—And has mamma's angel been a peacemaker today? Mamma's Angel—Yes, ma. Tommy Tuff was a hickin' William Whimpers, an' when I told 'im to stop he wouldn't, an' I jumped in an' licked the stuffin' out o' both of 'em.

For COLDS and GRIP. Hicks' Cough Cure is the best remedy. It relieves the aching and feverishness—cures the Cough and restores normal conditions. It's liquid—effects immediately. 10c, 25c, and 50c. At drug stores.

Every time a child shows you its toy bank it's your ante.

Constipation Vanishes Forever

Prompt Relief—Permanent Cure. CARTER'S LITTLE LIVER PILLS never fail. Purely vegetable—act surely but gently on the liver. Stop after dinner—dresses—indigestion, improve the complexion, brighten the eyes. SMALL PILL, SMALL DOSE, SMALL PRICE. Genuine must bear Signature.



Grandfather's Fault. Father—Why, when I was your age I didn't have as much money in a month as you spend in a day.

Son—Well, pa, don't scold me about it. Why don't you go for grandfather?—Silent Partner.

TO DRIVE OUT MALARIA AND BUILD UP THE SYSTEM. Take the Old Standard GUY'S TASTELESS GULL TONIC. You know what you are taking. The formula is plainly printed on every bottle, showing it is simply Quinine and Iron in a tasteless form. The Quinine drives out the malarial and the iron builds up the system. Sold by all dealers for 30 years. Price 50 cents.

The Grandest Old Bore. Methuselah chuckled. I remember a summer just like this 700 years ago," he cried. Abashed, the others slunk away.

STUDENTS WANTED

To learn the veterinary profession. Illustrated catalog sent free. Address VETERINARY COLLEGE, South 3rd Street, Terre Haute, Indiana.

Women's Secrets

There is one man in the United States who has perhaps heard more women's secrets than any other man or woman in the country. These secrets are not secrets of guilt or shame, but the secrets of suffering, and they have been confided to Dr. R. V. Pierce in the hope and expectation of advice and help. That few of these women have been disappointed in their expectations is proved by the fact that ninety-eight per cent. of all women treated by Dr. Pierce have been absolutely and altogether cured. Such a record would be remarkable if the cases treated were numbered by hundreds only. But when that record applies to the treatment of more than half-a-million women, in a practice of over 40 years, it is phenomenal, and entitles Dr. Pierce to the gratitude accorded him by women, as the first of specialists in the treatment of women's diseases.

Every sick woman may consult Dr. Pierce by letter, absolutely without charge. All replies are mailed, sealed in perfectly plain envelopes, without any printing or advertising whatever, upon them. Write without fear as without fee, to World's Dispensary Medical Association, Dr. R. V. Pierce, Pres., Buffalo, N. Y.

DR. PIERCE'S FAVORITE PRESCRIPTION
Makes Weak Women Strong,
Sick Women Well.