

THE CENTRE REPORTER

FRED KURTZ, Editor

TERMS.—One year, \$1.50, when paid in advance.

ADVERTISEMENTS.—20 cents per line for three insertions, and 5 cents per line for each subsequent insertion.

CENTRE HALL, PA., THURS. JULY 28

Whoever sincerely desires Reform, wants George A. Jenks at Harrisburg.

The Democratic county ticket, made up as it is of good and capable men, is worthy the support of all honest voters.

If Sylvester Scovel slapped Shafter in the face Shafter ought to slap Scovel into jail. That is the only way to treat that kind of fellow.

It is rumored that Admiral Cervera has decided to take up his residence in Boston, whither he will repair with his son, Lieutenant Cervera, who is also a prisoner at Annapolis, as soon as peace is declared.

General Toral, who surrendered Santiago, is the man that the United States should protect, rather than Cervera. Toral is in danger of court martial and Cervera isn't. If we must be sentimental let Toral be the object and beneficiary of the feeling.

"I have been a Republican since 1860 but our party now stinks in the nostrils of any decent man. If the people are willing to uphold this corruption and dishonesty, God save the country!" — Ex-Postmaster General John Wanamaker.

Nothing could better illustrate the beauties of American rule in Santiago than the fact that the Cuban refugees are leaving for their farms and plantations, where they soon will be able to raise produce for their own support. Already a Danish vessel has entered the harbor in the way of peaceful trade.

Last Thursday, 21, was Queen Regent Christina's 40 birthday, but "owing to Spain's circumstances," the usual official receptions and banquets were suppressed. The only ceremony was a private mass celebrated in the chapel of the royal palace.

Some of those basking in McKinley's sunshine urge his re-election on account of his war-with-Spain record. What he has done is simply what would be expected of any President. He has, however, been criticised by leaders of his own party for being too slow and timid.

Now that the American troops have entered Santiago it is discovered that the place was not so strongly fortified as had been presumed. Morro castle had little defense to offer an enemy, and the batteries that were supposed to be formidable were armed with guns of small caliber, or, in some cases, with practically nothing.

The indorsement of Mr. Jenks by the Jeffersonian Democratic party is an indication of the manner in which the Democrats will get together this fall.

Preaching next Sabbath morning in the Presbyterian church at Spring Mills at 10:30, and at Centre Hall at 2:30 p. m.

The editor of the Evans City, Pa., Globe, writes: "One Minute Cough Cure is rightly named. It cured my children after all other remedies failed."

The Philadelphia Record covers in a few words the whole question of the issues of this fall's campaign in Pennsylvania. It says: "In this campaign platform phrases may be dismissed as mere surplussage and irrelevancy."

discriminating between George A. Jenks and the candidate of the machine."

Bryan can't please the anti-Bryan cranks. They scolded when he ran for president, although he came within an ace of being elected;

They raved because he made unanswerable speeches in favor of coining gold and silver;

After the election they growled because he kept educating the masses as to the justice of coining gold and silver and because he drew immense crowds.

When the war broke out and he announced his intention to raise a regiment and march at its head against the Spaniards, they tried to make fun of him and said he was not in earnest;

When a jealous administration put hindrances in his way to speedily raise his number of men, they charged him with cowardice for not going to the front sooner;

When he finally overcame these obstacles and entered camp with his command, the cranks growled and are still growling, yet none of the growlers shouldered a gun.

Estimates based on a close study of the internal revenue system of the civil-war period and on the receipts under the new revenue law since it went into operation on July 1 last indicate a probable income from the new taxes of not less than \$300,000,000 a year, which would be twice the amount expected by the framers of the law.

The early rush for stamps, of course, is responsible for this showing, which is not likely to be maintained. On the other hand, the returns for the period under consideration do not include any receipts from special taxes, the certificates for the payment of brokers' and other licenses not having been ready for issue until Thursday of last week.

The taxes on legacies and other taxes in that class collectible by assessment are still an absolutely unknown quantity, and may swell the public income far beyond the amount now estimated.

Florida was a colony of Spain, populated by savages and Spaniards, as the Philippines are now. Its treatment had been essentially Spanish, the kind of treatment which caused even the Mexicans of that day to revolt.

Some of those basking in McKinley's sunshine urge his re-election on account of his war-with-Spain record. What he has done is simply what would be expected of any President. He has, however, been criticised by leaders of his own party for being too slow and timid.

Now that the American troops have entered Santiago it is discovered that the place was not so strongly fortified as had been presumed. Morro castle had little defense to offer an enemy, and the batteries that were supposed to be formidable were armed with guns of small caliber, or, in some cases, with practically nothing.

The indorsement of Mr. Jenks by the Jeffersonian Democratic party is an indication of the manner in which the Democrats will get together this fall.

Preaching next Sabbath morning in the Presbyterian church at Spring Mills at 10:30, and at Centre Hall at 2:30 p. m.

The editor of the Evans City, Pa., Globe, writes: "One Minute Cough Cure is rightly named. It cured my children after all other remedies failed."

The Philadelphia Record covers in a few words the whole question of the issues of this fall's campaign in Pennsylvania. It says: "In this campaign platform phrases may be dismissed as mere surplussage and irrelevancy."

The second and final account of Uriah S. Shaffer, Executor of etc. of Adam Shaffer, late of Miles township, deceased.

The first and final account of Balser Weber, Administrator of etc. of Susan Young, late of Howard township, deceased.

The account of C. M. Bower, guardian of John H. Rathbun, Mima K. Rathbun and Sarah L. Rathbun, minor children of Maria T. B. Rathbun, late of Emma, Chenoweth county, N. Y., deceased.

The account of John B. Lion successor to John H. Hester, Trustee for Hannah Pearson, late of Benner township, deceased.

The account of John K. Hosterman and A. N. Corman, Administrators of etc. of Sallie Wolf, late of Miles Twp. dec'd.

The first and final account of J. A. Bitner and Wm. L. Hester, Administrators of etc. of Christian Bower, late of Howard Twp. dec'd.

The first and final account of Albert Shenck Administrator of etc. of Jacob Brickley, late of Curtin Twp. dec'd.

The second and final account of D. Stryker, Administrator of etc. of John W. Bean, late of Worth Twp. dec'd.

The first account of Clement Dale and Blanche A. Hoy, Executors of etc. of C. Dale, Jr., late of Benner Twp. dec'd.

Register's Office, G. W. RUMBERGER, Bellefonte, July 23, '98.

COURT PROCLAMATION.—Whereas the Hon. John G. Love, President Judge of the Court of Common Pleas of the County of Centre, having issued his precept bearing date the 25th day of July 1898, to wit: directed for holding a Court of Common Pleas and Orphan's Court, Court of Oyer and Terminer and general Jail Delivery and Quarter Sessions of the Peace in Bellefonte, for the county of Centre, and commence on the 4th Monday of August, the 25th day of August 1898 and to continue 1 week.

ORPHAN'S COURT SALE.—THE UNDERSIGNED will offer at public sale at the residence of J. J. Logan, one-half mile west of Farmers Mills, on

SATURDAY, AUGUST 20TH, 1898, at 10 o'clock, p. m., the following described valuable real estate, bounded on the west by lands of Felix McClintic's heirs, on the north by lands of Mrs. Samuel Raubach and F. L. Rishel, on the east by lands of M. L. Rishel, and on the south by lands of J. B. Fisher's heirs and lands of F. P. Ross' heirs, containing

136 ACRES AND 104 PERCHES. About 10 acres are well timbered. Thereon erected a large two-story Dwelling House, suitable for two families, large Bank Barn, Spring House, Pig Stable and Buggy Shed and Corn House combined, together with all necessary outbuildings.

TERMS OF SALE.—One-third of purchase money to be paid cash on confirmation of sale; one-third in one year; and the balance in two years, with interest, to be secured by bond and mortgage on the premises.

EXECUTOR OF ETC. OF CATHERINE RISHEL, dec'd. Register's Office, G. W. RUMBERGER, Bellefonte, Pa.

PUBLIC SALE OF VALUABLE REAL ESTATE.—Pursuant to an order of the Orphan's Court of Centre County, Pennsylvania, will be sold at public sale on the premises, in Gregg Township, in said County, on

SATURDAY, AUGUST 15TH, 1898, at 10 o'clock, p. m., the following described real estate, late of Joseph Rishel, deceased, to wit: A valuable farm situated in Gregg Township, Centre County, Pa., on the road leading from Spring Mills to the farm of J. B. Fisher, containing

168 ACRES AND 104 PERCHES. The DeLaval Cream Separator was the favorite cream separator shown at the grangers' picnic, where the sample Baby Separator was sold.

TERMS OF SALE.—One-third of the purchase money to be paid in cash; one-third in one year; and one-third at the death of Lydia Rishel, the widow of said deceased, bearing date the 25th day of July 1898, to be secured by bond and mortgage on the premises.

EXECUTOR, GEORGE H. RISHEL. BUCKNELL UNIVERSITY, JOHN HOWARD HARRIS, President, College, leading degrees in Arts, Philosophy and Science.

SPRING MILLS BARGAIN COLUMN. Our customers fully appreciate the offers we have made to save their money, but we want you to know of it too.

CLARK'S O. N. T. still sells at 4c., or 45c. per doz. For one week from date of this issue we offer these and other bargains:

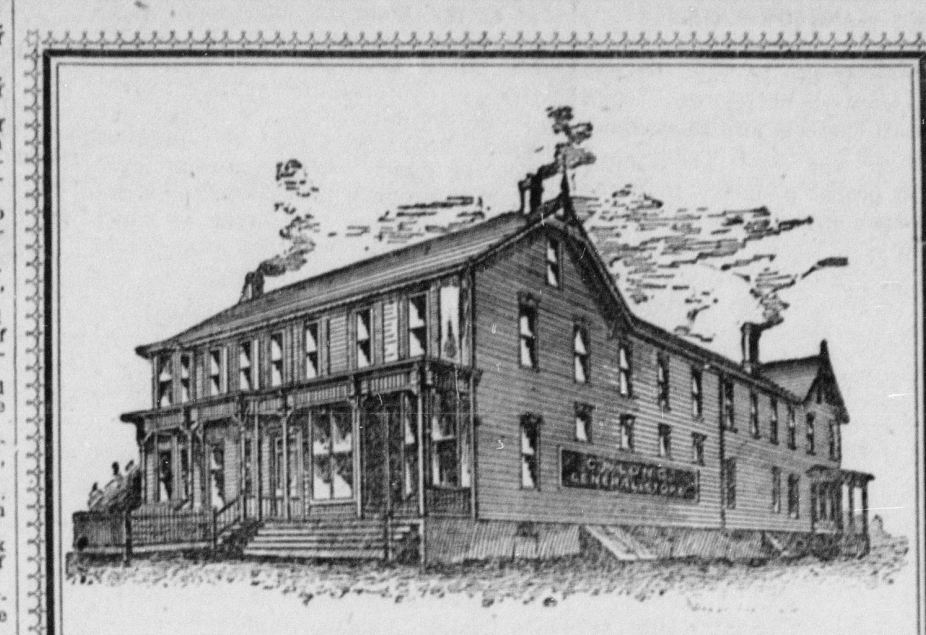
McCalmont & Co., Bellefonte, Pa. Shortlidge & Co., State College, Pa.

Don't think this list completes the bargains, for we will surprise you in glassware, fruit cans and jars, anti-rusting tinware, warrant not to rust—cheap. Still a few boxes of Sial and Standard Binder Twine.

A car of best soft coal, recommended by blacksmiths and threshers.

Money in your pocket if you watch this space.

G. H. LONG, Spring Mills, Pa.



C. P. LONG, PENNS VALLEY BARGAIN STORE...

Spring Mills, = = Pa. We Are On Deck!

With the largest and most complete stock of goods for the Spring and Summer that we ever received before. Every department in our large store has been filled up with all that is the latest, and we are positive that the new stock will please even more than ever.

Dry Goods and Clothing. All the latest and most stylish fell to our lot in buying. New patterns and shades appeared this spring and our lines are made up entirely of such.

Window Shades. We have received a full line of Window Shades, which are being offered at tempting figures. We have them from 10c. up on roll fixtures.

UP-TO-DATE NEWS. Safety Lanterns. The common lanterns explode and burn your barns—the Safety Attachment to a lantern prevents accident, which might induce every farmer to buy a lantern of us.

Glover Seed. We buy and sell Glover Seed. Fanning Mills. We sell Fanning Mills, with different makes of sieves and riddles, to clean farm seeds, as well as Clover and Timothy seed; but there has never been a device made to separate all the Buckhorn from Glover Seed.

Seed Seives. We have a few of the Dilline Adjustable Seed Seives for sale—the last that are in the market.

Up to Date Dairying Supplies. The DeLaval Cream Separator was the favorite cream separator shown at the grangers' picnic, where the sample Baby Separator was sold.

Household Fixtures and Sewing Machines. Cloth, Ringers, Washing Machines, Refrigerators, Sewing Machines. Baskets in great variety including the best make of Sewing Machines, which we sell at prices ranging from \$12.50 to \$25.00 each.

Buggies and Spring Wagons. We are agents for the Columbus Buggy Co.—the finest make of Buggies, Surries and Carriages in the market—hand-made goods. Other makes of Buggies and Carriages of best quality and lowest prices.

Blankets! Robes! Sleights and Sleds. A great variety of blankets, robes, horse blankets, sleights and cutters, of the finest make in the market—hand-made goods. Farm and Lumber Sleds of the very best make.

Builders' Supplies. Fire and Red Brick, Flag Stones, Lime, Roofing Paper, Plastering Hair, Sand, and Victor Patent Wall Plaster, including Gypsum Plaster. Logan and Rosendale Hydraulic Cements in quantities to suit buyers.

McCaumont & Co., Bellefonte, Pa. Shortlidge & Co., State College, Pa.

Collars and Cuffs. We use the soap that takes the dirt and not the shirt. Linen sent to this laundry is washed white, not whitewashed.

Collars and Cuffs. Laundered with... SMOOTH IRONY-LIKE EDGES: "Union Finish."

The Top Notch in Laundry Art. High Gloss or Dull Finish. Wm. Mc. WOLF, Agent for Centre Hall.

VALUABLE FARM AT PRIVATE SALE.—The farm of the undersigned, one-fourth mile north-west of Farmers Mills, is offered at private sale; containing

80 ACRES. of land in a high state of cultivation, being one of the most productive farms. The improvements are a two-story rail and log house, weather-boarded, good Bank Barn, and all necessary outbuildings. A good orchard with all kinds of choice fruit; well sprung of excellent water convenient to the premises.

EDUCATE YOURSELF. At the Anderson School of Business, Altoona, Pa. A graduating course in Book-keeping, Short-hand, Typewriting, Penmanship and English Books FREE. Send for PRICED ONE. BOOKS FREE. JACOB NEASE, Farmers Mills.

PENNSYLVANIA R. R.

Philadelphia & Erie R. R. Division and Northern Central Railway.

Time Table, in effect May 29, 1897.

TRAINS LEAVE MONTANDON, EASTWARD. 8:23 a. m.—Train 29. Week days for Sunbury, Harrisburg, arriving at Philadelphia, 12:50 p. m.

1:50 p. m.—Train 32. Weekdays for Sunbury, Williamsport, Scranton, Hazleton, Pottsville, Harrisburg and intermediate stations, arriving at Philadelphia at 6:23 p. m.

5:01 p. m.—Train 31. Weekdays for Williamsport, Scranton, Hazleton, Pottsville and daily for Harrisburg and intermediate points, arriving at Philadelphia 10:30 p. m.

8:07 p. m.—Train 6. Weekdays for Harrisburg and all intermediate stations, arriving at Philadelphia 12:30 a. m.

1:22 a. m.—Train 4, (Daily). For Harrisburg and points east and south, arriving at Philadelphia at 6:52 a. m.

5:57 a. m.—Train 3. (Daily). For Erie, Canaan, Rockport, Buffalo, Niagara Falls, and intermediate stations, with passenger coaches to Erie and Rockport. Week days for Buffalo, Bellefonte, and Pottsville. On Sundays only Pullman sleepers to Rockport and Erie.

10:05 a. m.—Train 31. (Daily) For Lock Haven and intermediate stations, and weekdays for Tyrone, Clearfield, Philipsburg, Pittsburg and the West, with through cars to Tyrone.

1:31 p. m.—Train 5. Weekdays for Kato, Tyrone, Clearfield, Philipsburg, Pittsburg, Canaan, Gettysburg, and intermediate stations, Syracuse, Rockport, Buffalo and Niagara Falls, with through passenger coaches to Kato and Rockport, and Parlor car to Rockport.

6:04 p. m.—Train 1. Week days for Renovo, Elmira and intermediate stations.

9:43 p. m.—Train 13. Daily for Lock Haven, and intermediate stations.

THROUGH TRAINS FOR MONTANDON FROM EAST AND SOUTH. Train 31 leaves New York 12:15 night, Philadelphia 4:30 a. m., Harrisburg 4:55 a. m., Williamsport 5:10 a. m., Sunbury 5:30 a. m., Harrisburg 5:50 a. m., Philadelphia 6:23 a. m.

Train 15 leaves Philadelphia 8:30 p. m., Washington 7:50 a. m., Baltimore 8:50 a. m., Williamsport 10:10 a. m., week days, arriving at Montandon 12:31 p. m., with parlor car from Philadelphia and through passenger coaches from Philadelphia and Baltimore.

Train 13 leaves New York 9:50 a. m., Philadelphia 12:25 p. m., Williamsport 1:50 p. m., Harrisburg 2:15 p. m., arriving at Montandon at 5:04 p. m., week days, with through passenger coaches from Philadelphia, Harrisburg and Baltimore.

Train 21 leaves New York 1:50 p. m., Sunday, Philadelphia 4:30 p. m., weekdays, 4:50 p. m., Sunday, Washington 3:40 p. m., Harrisburg 4:40 p. m., Williamsport 5:00 p. m., arriving at Montandon 7:30 a. m. Through Parlor Car from Philadelphia and Washington.

Train 3 leaves New York at 8:00 p. m., Philadelphia 11:50 p. m., (daily) arriving at Montandon at 5:27 a. m., with through Pullman sleeping cars from Philadelphia, Washington and Baltimore and through passenger coaches from Philadelphia and Baltimore.

LEWISBURG AND TYRONE RAILROAD. Westward. Week days.

Table with columns: Westward, Stations, Eastward, Time. Rows include Montandon, Lewisburg, Clearfield, Philipsburg, etc.

Additional trains leave Lewisburg for Montandon at 8:25 a. m., 8:50 a. m., 9:15 a. m., 1:15 p. m., 5:05 p. m., 5:30 p. m.

On Sundays trains leave Montandon 9:27 and 10:04 a. m., and 5:04 p. m., returning leave Lewisburg 9:30 a. m., 10:05 a. m., and 5:05 p. m.

J. B. HUTCHINSON, General Manager. Gen'l Passer Agt.

CENTRAL RAILROAD OF PENNSYLVANIA. Condensed Time Table.

Table with columns: No. 1, No. 2, No. 3, No. 4, No. 5, No. 6, No. 7, No. 8, No. 9, No. 10. Rows include Philadelphia, Harrisburg, etc.

Philadelphia Sleeping Cars attached to East-bound train from Williamsport at 11:30 p. m. and West-bound from Philadelphia at 11:30 p. m.

W. W. WOLF, General Superintendent.

BELLEFONTE CENTRAL RAILROAD. To take effect May 28, 1898.

Table with columns: EASTWARD, STATIONS, WESTWARD, Time. Rows include Harrisburg, Williamsport, etc.

Morning trains from Montandon, Williamsport, Lock Haven and Tyrone connect with train No. 7 for State College. A afternoon train from Montandon, Lewisburg and Tyrone connect with Train No. 11 for State College. Trains from State College connect with Penna. R. R. trains at Bellefonte.

DAILY EXCEPT SUNDAY. F. H. THOMAS, Sup.

DESIRABLE PROPERTY AT PUBLIC SALE.—A good two-story house, and about two acres of ground, on which is a small barn and other outbuildings; choice fruit, and fresh mountain water piped to the door; in the borough of Centre Hall. Also

35 ACRES.—A farm land, in a high state of cultivation, a small orchard thereon, near the south-east end of the borough of Centre Hall. Also