

PERSONAL MENTION.

Coming and Going.—Visitors in and out of Town.

—Sheriff Cronister was in town Monday.

—George Ocker made a business trip to Sunbury last week.

—Rev. J. M. Rearick attended the commencement exercises at Selinsgrove last Saturday.

—Mrs. Carrie Oaman left Wednesday morning for a visit with friends in Milroy and Lewistown.

—Mrs. Gertrude Frank, of Spring Mills, visited her parents, Mr. and Mrs. Jared Kreamer this week.

—Miss Jeane Stapleton, who is successfully teaching a class in elocution here, spent Sunday at Millheim.

—Miss Emilie B. Swartz, of Bethlehem, Pa., is the guest of her friend Miss Grace Smith since Saturday last.

—Mrs. Annie Van Pelt has been confined to the house the past week, from a slight illness, but is slowly recovering again.

—Mr. and Mrs. Walton W. Bayard arrived Saturday on a visit to Mrs. Bayard's father, Mr. Michael Strohm, at Centre Hill.

—Miss Helen Bartholomew is attending commencement exercises at the Millersville, Pa., State Normal this week.

—Witmer and James Smith and Mr. White, all of Williamsport, spent Sunday at the home of the former's parents here.

—Miss Jennie Odenkirk returned home last Saturday after a couple weeks visit with friends at Millinburg and Lewisburg.

—Dr. Chas. Gatlus and wife, of Millinburg, were the guests at the home of Charles Neff, west of the Old Fort, over Sunday.

—J. D. S. Gast and daughter, Miss Katharine, of Millinburg, were visiting among friends in the valley last week and this week.

—Mrs. Beulah Brisbin Boone arrived Tuesday from Schenectady, N. Y., with little daughter, on an extended visit to her parents here.

—Mrs. Flora O. Bairfoot returned home last Friday after a visit of several weeks with her uncle Dr. G. P. Weaver, in Philadelphia.

—Mrs. Joseph Atlee returned to her home at Tyrone last Saturday after a visit of several weeks among relatives in Centre Hill and vicinity.

—Co. Supt. Gramley was a member of the Board of Examiners at the Stroudsburg State Normal. This institution is presided over by Prof. Geo. P. Bible.

—Our esteemed friend, J. B. Ream, of Gregg, one of the Reporter's oldest readers, was a welcome caller, and was pleased to give his label a position in the front.

—Daniel Slotman, for two years a resident of Doyleburg, Pa., paid his respects to the Reporter and also paid up his subscription. He has moved back to Potter's bank again.

—A. C. Alexander, of Centre Hill, favored us with a call, accompanied by his daughter who had a desire to see how type setting was done; before leaving he let a label pusher drop into our till.

—Prof. Calvin Neff, principal of the Millinburg schools, and family, are spending several weeks with his brother Charley Neff, on the farm west of the Old Fort.

—John Keller, of Franklin and Marshall College, Lancaster, arrived home on Saturday on his vacation. John is in his senior year, and will enter the seminary on completing his college course.

—Rev. E. J. Wolf, a Professor in the Lutheran Theological seminary at Gettysburg, was the guest of his brother Wm. Wolf, the latter part of last week. He also paid his aged mother a visit in Rebersburg.

—Miss Elizabeth Jones, of Pottsville, and Miss Anna Hamilton, of State College, two exceedingly bright and accomplished young ladies visited Misses Emilie and Grace Alexander, Saturday and Sunday last. The ladies are both students at State College.

—Mr. A. B. McNitt, of Siglerville, Mifflin county, was in town last Friday looking after his interests on this side of the Seven mountains. He was accompanied by his son, A. Brown McNitt. Mr. McNitt is one of Mifflin county's most influential and wealthiest farmers, and has a number of investments in this county.

Union County Deaths

In New Berlin, Ellis Predix, aged 52 years.

In Lewisburg, the widow of Jacob Baker, aged 82 years.

In Millinburg, the widow of Benj. W. Thompson, aged 78 years.

In Lewisburg, Gertrude, daughter of John Zimmerman, aged 5 years.

In Millinburg, the wife of C. D. Laudenslager, aged 50 years.

In Reading, Rev. Geo. E. Adams, formerly of Millinburg, aged 75 years.

—One of the largest stocks of Spring and Summer clothing ever received in this part of the state, was received recently by Lewins, at the Philad. Branch, Bellefonte. It is a tremendous stock and the prices are as low in comparison, and must move it.

New Time Table.

On Sunday June 20th the Pennsylvania Railroad Company will place in effect a new time table, new fast train No. 20, will be placed in service for the east and south, leaving Williamsport 7.30 a. m. arriving at Philadelphia 12.50 p. m., New York 3.40 p. m., Washington 1.47 p. m. making connection at Washington for the south, at New York for all points east and at Philadelphia for all seashore resorts.

Train No. 14 will leave Lock Haven at 7.30 a. m. instead of 7.25 a. m., Williamsport 8.30 a. m. This train will run daily.

Train No. 12 now leaving Williamsport at 4 p. m., will be made a through train from the north, leaving Buffalo 8.05 a. m. Rochester 9.55 a. m. Canandaigua 11.15 a. m., Elmira 1.30 p. m. with through parlor car from Rochester to Philadelphia. This train will arrive at Baltimore 9.45 p. m., Washington 10.55 p. m.

Trains Nos 8 and 6 will be annulled on Canandaigua Division. Train No. 8 will leave Elmira for Williamsport at 9.45 a. m. instead of 10.05 a. m. Train No. 6 will leave Elmira for Williamsport at 4.15 p. m. instead of 3.35 p. m.

A new train No. 2 will be run on Canandaigua Division leaving Canandaigua 9 a. m. arriving at Elmira at 11.30 a. m. This train will have connections at Canandaigua from the east and west leaving Syracuse 6 a. m. Rochester 7.45 a. m.

Train No. 10 will be made earlier leaving Canandaigua 3.45 p. m. instead of 6.29 p. m. with connections from the east and west arriving at Elmira 6.25 p. m. instead of 8.45 p. m.

Train No. 16 from the north will be changed to train No. 4 and the time made earlier, leaving Buffalo 4 p. m. Rochester 6.20 p. m. Elmira 9.40 p. m. arriving at Williamsport 12.15 a. m. where it will be consolidated with train No. 4 leaving Williamsport 12.25 a. m. This will give Washington passengers from Williamsport a much better service as a Washington sleeper will be run on this train from Williamsport arriving at Washington 7.40 a. m. This sleeper will be placed at Williamsport so that it may be occupied at any time after 9 p. m. Passengers from the north on this train will have a through sleeper from Buffalo to Washington. Philadelphia sleepers on this train from Erie and Williamsport will be continued as at present.

Train No. 2, arriving at Williamsport 9.50 a. m. from Elmira will be abandoned.

Train No. 6 eastward will leave Williamsport 7.10 instead of 7 p. m.

The time of train No. 9 from the south and east will be quickened to arrive at Williamsport 2.25 a. m. Elmira 4.45 a. m. Rochester 7.30 a. m. Buffalo 9.25 a. m. with through sleeper from Washington to Buffalo.

Train No. 3 will leave Williamsport at 7.10 a. m. instead of 7.15 a. m. and will run to Elmira only, except on Sundays, when it will run through to Canandaigua connecting for Rochester Buffalo and Niagara Falls as at present. Sleepers will be run on this train from Philadelphia to Erie, Philadelphia to Williamsport and Washington to Williamsport.

A new train will leave Elmira at 7.30 a. m. arriving at Canandaigua 9.55 a. m. Rochester 10.50 a. m. Buffalo 12.45 p. m. Syracuse 1.18 p. m.

Train No. 15 northward will leave Williamsport at 2.50 p. m. instead of 2.40 p. m.

Train No. 1 northward will leave Williamsport for Elmira 7 p. m. instead of 7.07 p. m.

Train No. 1 westward will leave Williamsport for Renova at 7.05 p. m. instead of 7.10 p. m.

Train No. 13 leaving Williamsport at 10.45 p. m. for Lock Haven will run daily.

Trains Nos 31, 14 and 12 will be run to Lewisburg on Sundays.

A Bargain. Two good horses, 5 and 6 years old, will be sold cheap. Apply to Harry W. Dinges, Centre Hall, Pa.

GRAIN MARKET.

Table with 2 columns: Grain Name and Price. Includes Wheat, Rye, Corn, Oats, Barley, Buckwheat.

PRODUCE AT STORES.

Table with 2 columns: Produce Name and Price. Includes Butter, Eggs, Lard, Shoulders, Ham, Tallow, Potatoes, sides.

PUBLIC SCHOOL FINANCIAL STATEMENT.

For Potter township, for the fiscal year ending June 30, 1897.

Table with 2 columns: Category and Amount. Includes Whole number of schools, Number of teachers employed, No. pupils enrolled in all the schools.

TREASURER'S ACCT.—MONEY RECEIVED.

Table with 2 columns: Source and Amount. Includes State appropriation, From collector, including all kinds taxes, From loans, From interest, undivided lands, fines, etc.

Total receipts \$4988.05

MONEY PAID OUT.

Table with 2 columns: Purpose and Amount. Includes For purchasing grounds, For teaching, wages, For rent and repairs, For fuel and contingencies.

Total money paid out \$4990.27

RESOURCES AND LIABILITIES.

Table with 2 columns: Resource and Amount. Includes Amount due district, Amount due treasurer.

We hereby certify that we have examined the above and find it correct.

W. A. KERB, C. S. FORTNEY, D. G. FORTNEY, Auditors.

Witness our hands this 7th day of June, 1897.

Wm. M. GROVE, M. F. ROSSMAN, Secretary, President.

MEN WANTED!

To obtain big bargains in Clothing men are wanted to visit our store, where and when we will sell them anything in Suits or parts of Suits below cost.

A full stock of Men's, Ladies' and Children's

Black and Tan Hose,

Can be seen and purchased at phenomenally low prices. Have you seen our large stock of

Green, Tan, Red and Drab Shoes.

These goods were made to order and cannot be found as duplicate goods in Centre Hall. It is now high time to buy

Hay Forks, Rakes and Scythes.

Don't fail to get our prices on such articles. We bought to sell; not to keep. Stop detailing this time! Yes, we must. We only advertise goods in stock. It won't pay to advertise what cannot be found on counters and shelves.

A. D. Potts, Centre Hall, Pa.

THE PENNSYLVANIA STATE COLLEGE

LOCATED IN ONE OF THE MOST BEAUTIFUL AND HEALTHFUL SPOTS IN THE ALLEGHENY REGION; UNDENOMINATIONAL OPEN TO BOTH SEXES; TUITION FREE; BOARD AND OTHER EXPENSES VERY LOW; NEW BUILDINGS AND EQUIPMENT.

LEADING DEPARTMENTS OF STUDY.

- 1. AGRICULTURE and HORTICULTURE, with constant illustrations on the Farm and in the Laboratory.
2. BIOLOGY, BOTANY and ZOOLOGY. Original study with the microscope.
3. CHEMISTRY, with an unusually full and thorough course in the Laboratory.

- 4. CIVIL ENGINEERING, ELECTRICAL ENGINEERING, MECHANICAL ENGINEERING, MINING ENGINEERING, etc. These courses are accompanied with very extensive practical exercises in the Field, the Shop, and the Laboratory.
5. HISTORY and POLITICAL SCIENCE.
6. INDUSTRIAL ART and DESIGN.

- 7. LANGUAGE and LITERATURE: Latin (optional), French, German and English (required) one or more continued through the entire course.
8. MATHEMATICS and ASTRONOMY; pure and applied.
9. MECHANICAL ARTS: combining shop work with study, three years' course.

- 10. MENTAL, MORAL and POLITICAL SCIENCE, Constitutional Law and History; Political Economy, etc.
11. MILITARY SCIENCE: instruction theoretical and practical, including each arm of the service.
12. PREPARATORY COURSE: One year. Full term opens Sept. 11, 1896. Examinations for admission, Sept. 13.

For Catalogue or other information, address GEO. W. ATHERTON, LL.D., Pres., State College, Centre Co., Pa.

DESIRABLE HOMESTEAD FOR SALE.—The undersigned offers a desirable homestead for sale, situated south east corner of public square in borough of Centre Hall, Pa., known as the Henry Witmer homestead; thereon erected a good dwelling, large barn, and all suitable out-buildings, large gardens, and fine orchard, fruit of all kinds; said barn and gardens on separate lot. Also five acres of land adjoining said homestead which can be laid out in desirable town lots; all in good cultivation. ISAAC SMITH, Centre Hall.

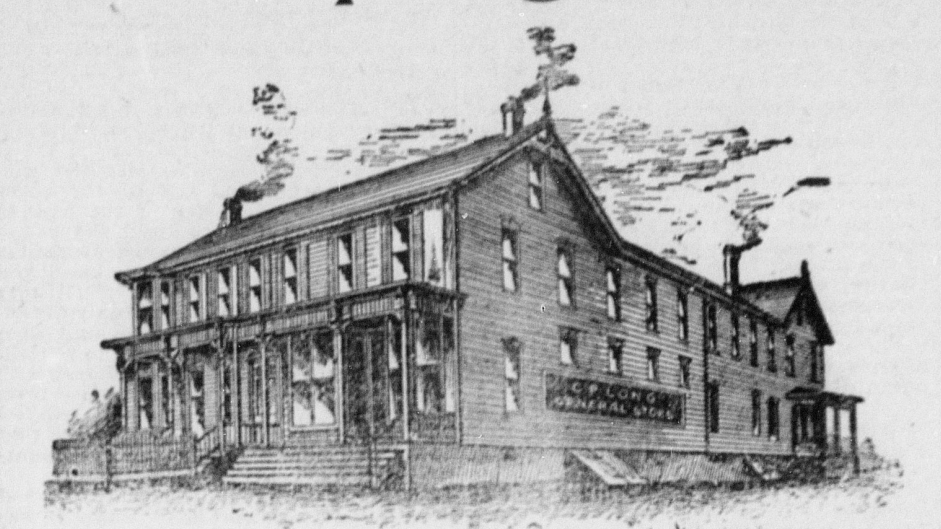
PATENTS

Patents, Caveats, and Trade-Marks obtained, and all Patent business conducted for MODERATE FEES. OUR OFFICE IS OPPOSITE U. S. PATENT OFFICE, and we have the latest and best time-saving apparatus for securing patents.

Send model, drawing or photo, with description. We advise if patentable or not, free of charge. Our fee not due till patent is secured.

A PAMPHLET, "How to Obtain Patents," with full list of agents in the U. S. and foreign countries sent free. Address, C. A. SNOW & CO., Opp. Patent Office, Washington, D. C.

New Spring Goods.



Positively the Greatest Bargains Ever Offered.

Dry Goods, Notions, Clothing, Shoes, etc., never as cheap and attractive as this spring. Reductions which we have made in prices of merchandise has caused quite a sensation and induced people to look for the place where they can get the most for their money.

Dress Goods, Lawns, Dimities, White Goods, Muslins, Prints, Etc.

We have selected a fine stock of the above named goods.

Table with 2 columns: Item and Price. Includes Muslin, 1 yard wide, Toweling, per yard, Dress Gingham, Table Damask, fast colors, Table Oilcloth, prices reduced.

PERCALS, EMBROIDERIES AND DOTTED SWISS

cannot be equalled anywhere. Underwear and Hosiery never were so cheap as they are this spring. Window Shades and Scrim at about half the usual price. Straw Hats for Men, Boys and Children—the line is complete and all new goods.

Shoes.

We are headquarters for Men's, Ladies' and Children's Shoes and are selling them at astonishingly low prices. Come and see.

Carpet.

Ingrain and Brussels Carpet and Matting. Stair Carpet, 15c a yard.

Wall Paper.

Come and see our stock—it will pay you.

Men's, Boys' and Children's Clothing.

Come and see them. For want of space we can name only a few prices: Children's Suits, ages 4 to 14 years, from \$1.50 up. Boys' Suits, \$2.50 and up. Men's Suits, \$4.50 and up.

Come and convince yourselves that we mean to do even more than we have room to say in this paper.

C. P. LONG, Spring Mills, Pa. Produce of all kinds taken in exchange for goods.



ONE GREAT BIG SWEEPING PRICE

Reduction on all Our Spring and Summer Clothing.

This is an Opportunity for You to Save Big Money.

YOU SHOULD NOT MISS IT!

You can only appreciate what this reduction means by seeing us.

Costs Nothing to See.

Faibles, Bellefonte.

ATTORNEYS.

HUGH S. TAYLOR, Attorney-at-Law, Bellefonte, Pa. No. 24 Temple Court. All manner of legal business promptly attended to. aug96

A. O. FURST, Attorney-at-Law, Bellefonte, Pa. Offices directly opposite the Court House. aug96

I. R. C. MITCHELL, Attorney-at-Law, Bellefonte, Pa. Office, Room No. 16, Crider's Exchange. oct194

JOHN KLINE, Attorney at Law, BELLEFONTE, PA. Office on second floor of Furst's building, north of Court House. Can be consulted in German and English. aug87

J. H. ORVIS, C. M. BOWER, E. L. ORVIS (ORVIS, BOWER & BOWER), Attorneys at Law, BELLEFONTE, PA. Office in Crider's Exchange building on second floor. aug85

David F. Fortney, W. Harrison Walker, FORTNEY & WALKER, Attorneys at Law, BELLEFONTE, PA. Office north of Court House.

CLEMANT DALE, Attorney at Law, BELLEFONTE, PA. Office N. W. corner Diamond, two doors from First National Bank. jan87

W. G. BUNKLE, Attorney-at-Law, BELLEFONTE, PA. All kinds of legal business attended to promptly. Special attention given to collections. Office, 2d floor Crider Exchange. jan92

J. L. SPANGLER, C. P. HAWES, SPANGLER & HAWES, Attorneys at Law, BELLEFONTE, PA. Special attention to collections. Practice in all the courts. Consultation in German and English. jan92

S. D. GETTING, ATTORNEY-AT-LAW, BELLEFONTE, PA. Collections and all legal business attended to promptly. Consultations German and English. Office in Exchange Building. jan92

N. B. SPANGLER, ATTORNEY-AT-LAW, BELLEFONTE, PA. Practices in all the courts. Consultation in English and German. Office, Crider Exchange Building. nov188

BANKS.

CENTRE COUNTY BANKING CO., BELLEFONTE, PA. Receive deposits. Discount notes. jan92 J. D. SMOGERT, Cashier.

HOTELS.

THE AAG HOTEL, Bellefonte, Pa. Daniel C. Keller, Proprietor. This house has been newly furnished throughout. An excellent stable in connection with the house. Rates very reasonable. Parties attending court and making an extended stay in Bellefonte an extra discount will be made. The table is provided with everything in season.

IRVIN HOUSE, 8 Woods Caldwell, Proprietor, LOCK HAVEN, PA. Terms reasonable. Good sample rooms on first floor. jan92

BUSH HOUSE, W. L. Daggett, Proprietor, BELLEFONTE, PA. Special attention given to country trade. apr90

NEW GARMAN HOUSE, Opposite Court House, BELLEFONTE, PA. New building, new furniture throughout, steam heat, electric bells and all modern improvements. Good table and moderate charges.

SPRING MILLS HOTEL, D. H. Ruhl, Proprietor, SPRING MILLS, PA. Free bus to and from all trains.

NEW BROCKERTHOFF HOUSE, J. M. Neuhauer Proprietor, BELLEFONTE, PA. Free bus to and from all trains. Good sample rooms on first floor. Special rates to witnesses and jurors.

CENTRE HALL HOTEL, Wm. H. Runkle, Manager. Newly equipped bar and table supplied with the best. Summer boarders receive special attention, and can find no healthier locality. Central for fishing and hunting. may97

HUMPHREYS'

- No. 1 Cures Fever.
No. 2 " Worms.
No. 3 " Infants' Diseases.
No. 4 " Diarrhea.
No. 5 " Neuralgia.
No. 6 Cures Headache.
No. 7 " Dyspepsia.
No. 8 " Delayed Periods.
No. 9 " Leucorrhoea.
No. 10 " Skin Diseases.
No. 11 Cures Rheumatism.
No. 12 " Malaria.
No. 13 " Whooping Cough.
No. 14 " Kidney Diseases.
No. 15 " Urinary Diseases.
No. 16 " Colds and Grip.

Sold by Druggists, or sent prepaid on receipt of price, 25c., or 5 for \$1.

Dr. HUMPHREYS' HOMEOPATHIC MANUAL OF DISEASES MAILED FREE.

Humphreys' Med. Co., 111 William St., N. Y.

50 YEARS' EXPERIENCE. PATENTS

TRADE MARKS, DESIGNS, COPYRIGHTS &c.

Anyone sending a sketch and description may quickly ascertain, free, whether an invention is probably patentable. Communications strictly confidential. Oldest agency for securing patents in America. We have a Washington office.

Patents taken through Munn & Co. receive special notice in the

SCIENTIFIC AMERICAN.

Beautifully illustrated, highest circulation of any scientific journal, weekly, terms \$3.00 a year; \$1.00 six months. Specimen copies and HAND BOOK on PATENTS sent free. Address

MUNN & CO., 361 Broadway, New York.