

AARONSBURG.

News of the Past Week as Gathered by Our Correspondent.

A daughter of Luther M. Stover living east of town was severely burned by her clothes catching fire.

After spending the winter in Chicago, Mrs. Maria Desler has again returned home.

Luther Stover sold his Pat horse to J. G. Meyer for \$36 and went to Sugar valley and bought a younger horse.

George Rupp does not recognize any one entering his room. His son Frank came home from Kansas after having been away over two years but his father did not know him. He is suffering with softening of the brain.

The pair of shoats D. H. Rote bought from Edward Stump last winter got too big for him so he sold them to Mr. Brumgart the butcher. The pair dressed 498 pounds; they were of good stock.

The road viewers took William Haftly's private lake used to water his stock for a public road, allowing him seventy dollars per acre damages for it though he had paid over ninety dollars per acre for it, all to accommodate one man. That's taking it from one and giving it to another.

John Jordan's family have gone to Altoona with W. S. Musser's hostler, and John has hired to J. G. Meyer as man of all work.

Earn Stover made a business trip to Bellefonte on his bicycle in the early part of the week. Earn had the care of Amelia Harper during her sickness and held the funeral after her death and now the administratrix wants to put him off with \$5.

The colored sweeps assisted the corn band at their festival on Saturday and with some were the drawing card.

A number of ministers are here attending Lutheran conference which is now in session.

James Ettinger bought Daniel Gearey's entire rig and expects to go on the road and peddle cigars.

Miss Mollie Gettig has gone to Williamsport to work in the silk factory and her brother Sammy has gone to Virginia into the railroad office with his brother to learn telegraphy; so Mr. and Mrs. Gettig are alone.

Prof. Kahl opened his music school on Monday with but eight pupils; the number being much less than he had expected.

Mrs. Henry Crouse is away to Holsapple, Pa., attending the wedding of her son Frederick R.

Miners' Meeting at Houtzdale.

The miners' convention at Houtzdale adjourned without determining the question of a suspension this year. The convention appointed a committee to wait upon Edward Berwind, president of the operators' association, to request a joint conference of operators and miners to arrange a scale of prices. Pending the report of the committee, it was determined to push the work of organization, especially in the Clearfield region. Except the operators in Jefferson county, who had previously promised an advance, the replies of the operators were against granting an advance in wages at this time, some naming conditions which amounted to a refusal.

Not Much of a Joke Either.

A prominent citizen of Williamsport was married on Thursday. While the ceremony was being performed a lot of jokes tied long, white streamers to the horses and tied a number of cow bells under the carriage. After the bride and groom entered the carriage and the vehicle started for the station the horses took fright at the jingling of the bells and the flopping of the streamers and ran away. The driver was able to steer them so as to avoid colliding with any obstacle but could not stop them until they had tired themselves out running. The bride was so frightened that she fainted.

He Shot Himself.

Robert McNamara, of Houtzdale, left his residence early last Saturday morning. The same afternoon his office partner saw him, as he supposed, asleep on the stairs leading to an attic over the office. The next morning an investigation proved that the man was dead, he having shot himself through the head with a pistol.

It is thought that he shot himself on account of his inability to secure any one to go on his bond for Justice of the Peace, in which office he had served two consecutive terms, and was to have entered on his third term that day.

Back Again.

On Monday Prof. W. A. Krise and family arrived and for the future will make Centre Hall their home. They have been located at Johnstown for several years past but the attractions of our handsome boro inveigled them into again taking up their residence here.

Wanted, at Lyon & Co's store, Bellefonte, 50,000 lbs. of Wool

—Owing to the fact that Lyon & Co., of Bellefonte, must make room for a large stock of spring goods, they now offer their entire winter stock at such prices never before heard of in this county. See their advertisement in another column on page five.

Wheat on a Rise.

Farmers in Centre county are getting 3 and 4 cents more for wheat now than in the past winter, but in Berks county they are doing better, the farmers there are asking eight and ten cents more a bushel for wheat than two months ago, and owing to this advance Berks millers have raised the price of new flour from thirty to fifty cents per barrel. Five bushels of wheat make a barrel of flour. The Reading Eagle says that millers are now paying farmers 65 cents per bushel for wheat and have advanced the price on flour dealers 30 to 50 cents, the price being \$3.30 to \$3.50 a barrel.

The best market Penns valley farmers ever had was when the steam roller mill of Kurtz & Son was in operation which ground most of the wheat raised between Coburn and Linden Hall, and paid eastern prices for wheat and at times one and two cents per bushel above the Philadelphia market—this was a gain of thousands of dollars to our farmers. But the destruction of the mill by fire destroyed this home market and our farmers must be content with from 8 to 10 cents less per bushel of wheat.

Wheat was quoted in Philadelphia, beginning of the week at 65¢, which is still below what the farmer should get.

Trustee Notice.

We have been requested to announce a meeting of the members of the Lutheran church of this place on Sunday next, after the dismissal of Sabbath school, for the purpose of nominating cemetery trustees. Members requested to attend.

A lady in Tooleys, La., was very sick with bilious colic when M. C. Tisler, a prominent merchant of the town gave her a bottle of Chamberlain's Colic, Cholera and Diarrhoea Remedy. He says she was well in forty minutes after taking the first dose. For sale by Wm. Pealer, Spring Mills, and S. M. Swartz, Tusseyville.

Figured China Silks, 20c a yard. Striped Wash Silk, 30c a yard. Lyon & Co.

GRAIN MARKET.

CORRECTED WEEKLY BY B. D. BRISBIN.

Wheat	54
Eye	56
Corn	45
Oats	39
Rye	42
Buckwheat	45

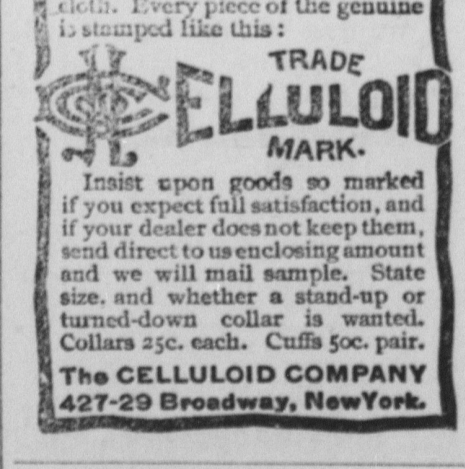
PRODUCE AT STORES.

Butter	15
Eggs	10
Lard	8
Shoulders	10
Ham	12
Tallow	4
Potatoes	50
Sides	7



Full of starch and glass serena. The linen collar starts the morn; Full of starch and glass serena. All wilted, wrinkled and forlorn.

That's what you must expect of such a collar; it's the linen of it. The stand-up collars won't stand up, and the turn-down collars will wilt down. The easy, cheap, and pleasant way out of this is to wear "CELLULOID" COLLARS AND COATS. These goods are made by covering linen collars or cuffs on both sides with "CELLULOID," thus making them strong and durable, and water proof, not affected by heat or moisture. There are no other waterproof goods made this way, consequently none that can wear so well. When soiled simply wipe them off with a wet cloth. Every piece of the genuine is stamped like this:



1895 Johnston Self-Binding Harvesters, With Truck and Sheaf Carriers For \$100.

At W. L. Goodhart's Implement Store Millheim, Pa. Mowers Accordingly. may 95t

KRUMRINE BROS., Apothecaries, Bellefonte, - Penna.

Headquarters for **FINE PERFUMERY AND TOILET REQUISITES.**

A full line of Trout and other fishing outfits, just opened.



SPECIAL BLACK SUIT SALE.

This is a special sale of all the Black Suits in our entire stock, consisting of the popular Black Cheviots, both the plain and serge effects. Also the celebrated 17 oz. Clay Wooster Riverside Corkscrews, Bird Eyes and Wide Waters, in either Sack or Cutaways. These are the very best goods shown by retail clothiers this season and are made in such a way that it is impossible to distinguish them from the finest merchant work. We have all sizes. Can fit everybody. Suits that are made specially for long and slim men; for short and stout fellows, as well as the regular sized man. You can't go wrong, and you will be sure to find what you want. What will interest you most after seeing the High Standard of goods shown, will be the prices. We submit you a few prices to give you an idea what rare bargains these goods really are:

Suits that others ask you \$15 for, our price, \$10.
Suits that others ask you \$10 for, our price, \$7.50.
Suits that others ask you \$8 and \$9 for, our price, \$5.

Not a garment in the entire lot but what is strictly all wool, and will give good service. You will be sure to profit by visiting us while this sale lasts, which will be as long as the goods hold out. It may be only a few days and may be a month. First come, first served. We would suggest an early call, as these are sure to sell quickly. See us if you care to save money.

FAUBLES.

Men's Outfitters. Bellefonte.

Bargains - Bargains



New Goods, Latest Styles, Largest Stock.

Best Goods at 30 per cent,

Less Than Any Other Store In Penns Valley.

COME AND SEE.

C. P. LONG.

SPRING MILLS, - PENNA.

ATTORNEYS.

IRA C. MITCHELL, Attorney-at-Law, Bellefonte, Pa. Office, Room No. 10, Crider's Exchange. oct194

JOHN KLINE, Attorney at Law, BELLEFONTE, PA. Office on second floor of Fust's building, north of Court House. Can be consulted in German and English. an87

J. H. ORVIS, C. M. BOWER, E. L. ORVIS (ORVIS, BOWER & ORVIS, Attorneys at Law, BELLEFONTE, PA. Office in Crider's Exchange building on second floor. an85

D. F. FORTNEY, Attorney at Law, BELLEFONTE, PA. Office in Conrad Building. jan92

LEMANT DALE, Attorney at Law, BELLEFONTE, PA. Office N. W. corner Diamond, two doors from First National Bank. jan87

W. G. RUNKLE, Attorney-at-Law, BELLEFONTE, PA. All kinds of legal business attended to promptly. Special attention given to collections. Office, 2d floor Crider Excha. ge. jan87

J. L. SPANGLER, C. P. HEWES, SPANGLER & HEWES, Attorneys at Law, BELLEFONTE, PA. Special attention to collections. Practice in all the courts. Consultation in German and English. jan92

S. D. GETTIG, ATTORNEY-AT-LAW, BELLEFONTE, PA. Collections and all legal business attended to promptly. Consultations German and English. Office in Exchange Building. s

N. B. SPANGLER, ATTORNEY-AT-LAW, BELLEFONTE, PA. Practices in all the courts. Consultation in English and German. Office, Crider Exchange Building. nov193

BANKS.

CENTRE COUNTY BANKING CO., BELLEFONTE, PA. Receive deposits. Discount notes. jan92 J. D. SHUGERT, Cashier.

HOTELS.

HAAAG HOTEL, Daniel C. Keller, Proprietor, Bellefonte, Pa. This house has been newly furnished throughout. An excellent stable in connection with the house. Rates very reasonable. Parties attending court and making an extended stay in Bellefonte an extra discount will be made. The table is provided with everything in season. jan92

UTAH HOUSE, POTTERS MILLS, PA. James S. Belsch, Proprietor. Opened again, the house having been remodeled, repainted, and newly furnished. The public will find it first-class in table, and all other respects. Summer boarders taken on reasonable terms. Healthy locality, fishing and hunting grounds convenient. laprim

IRVIN HOUSE, S. Woods Caldwell, Proprietor, LOCK HAVEN, PA. Terms reasonable. Good sample rooms on first floor. jan92

BUSH HOUSE, W. L. Daggett, Proprietor, BELLEFONTE, PA. Special attention given to country trade. apr90

NEW GARMAN HOUSE, Opposite Court House, BELLEFONTE, PA. New building, new furniture throughout, steam heat, electric bells and all modern improvements. Good table and moderate charges.

SPRING MILLS HOTEL, D. H. Ruhl, Proprietor, SPRING MILLS, PA. Free bus to and from all trains.

NEW BROCKERHOFF HOUSE, J. M. Neubaer Proprietor, BELLEFONTE, PA. Free bus to and from all trains. Good sample rooms on first floor. Special rates to witnesses and jurors.

OLD FORT HOTEL, EDWIN Ruhl, Proprietor. This old and well-known house has been newly furnished throughout. Accommodations first-class and rates reasonable. Private parties can have special accommodation. apr94t

A. B. HARTER, AUCTIONEER, MILLHEIM, PA.

THE PENNSYLVANIA STATE COLLEGE LOCATED IN ONE OF THE MOST BEAUTIFUL AND HEALTHFUL SPOTS IN THE ALLEGHENY REGION; UNDERMINATION; OPEN TO BOTH SEXES; TUITION FREE; BOARD AND OTHER EXPENSES VERY LOW; NEW BUILDINGS AND EQUIPMENT.

LEADING DEPARTMENTS OF STUDY.
1. AGRICULTURE (Three Courses) and AGRICULTURAL CHEMISTRY; with constant illustrations on the Farm and in the Laboratory.
2. BOTANY and HORTICULTURE; theoretical and practical. Students taught original study with the microscope.
3. CHEMISTRY; with an unusually full and thorough course in the Laboratory.
4. ELECTRICAL ENGINEERING; COURSE IN MECHANICAL ENGINEERING; these are accompanied with very extensive practical exercises in the Field, the Shop, and the Laboratory.
5. HISTORY; Ancient and Modern, with original investigation.
6. INDUSTRIAL ART AND DESIGN.
7. LADIES' COURSE IN LITERATURE and SCIENCE; Two years' ample facilities for Music, vocal and instrumental.
8. LANGUAGE and LITERATURE; Latin (optional), French, German and English (required), one or more continued through the entire course.
9. MATHEMATICS and ASTRONOMY; pure and applied.
10. MECHANIC ARTS; combining shop work with study, three years' course; New building and equipment.
11. MENTAL, MORAL and POLITICAL SCIENCE; Constitutional Law and History Political Economy, etc.
12. MILITARY SCIENCE; instruction theoretical and practical, including each arm of the service.
13. PREPARATORY DEPARTMENT; Two years—carefully graded and thorough. Fall term opens Sept. 14, 1892. Examinations for admission, June 12-15, 1892. For Catalogue or other information, address GEO. W. ATHERTON, LL.D., President, State College, Centre Co., Pa.

WANTED-SALESMEN We want a few Choice Line of Nursery Stock. We cannot make you rich in a month but can give you steady employment and will pay you well for it. Our price correspond with the times. Write for terms and territory to THE HAWKS NURSERY CO. mar7-4m Rochester, N. Y.

PENNSYLVANIA R. R.

Philadelphia & Erie R. R. Division and Northern Central Railway.

Time Table, in effect Nov. 25, 1894.

TRAINS LEAVE MONTANDON, EASTWARD.
9.18 a. m.—Train 14. (Daily except Sunday) For Sunbury, Wilkesbarre, Hazleton, Pottsville Harrisburg and intermediate stations, arriving at Philadelphia at 3.00 p. m., New York, 5.38 p. m., Baltimore, 8.10 p. m., Washington, 4.30 p. m. connecting Philadelphia for all west-bound points. Through passenger coaches to Philadelphia and Baltimore. Parlor cars to Philadelphia.

1.37 p. m.—Train 8. (Daily except Sunday.) For Sunbury, Harrisburg and intermediate stations, arriving at Philadelphia at 6.50 p. m., New York, 9.28 p. m., Baltimore, 6.45 p. m., Washington at 7.50 p. m. Parlor car through to Philadelphia, and passenger coaches to Philadelphia and Baltimore.

5.01 p. m.—Train 12. (Daily except Sunday.) For Wilkesbarre, Hazleton, Pottsville Harrisburg and intermediate points, arriving at Philadelphia 11.15 p. m., New York 3.53 a. m., Baltimore 9.40 p. m. Passenger coaches to Wilkesbarre and Philadelphia.

7.48 p. m.—Train 6. (Daily.) For Sunbury Harrisburg and all intermediate stations, arriving at Philadelphia 4.30 a. m., New York at 7.53 a. m. Pullman sleeping cars from Harrisburg to Philadelphia and New York. Philadelphia passengers can remain in sleeper undisturbed until 7.04 a. m.

1.29 a. m.—Train 4. (Daily.) For Sunbury Harrisburg and intermediate stations, arriving at Philadelphia at 6.52 a. m., New York, 9.28 a. m. week days, 10.35 a. m. Sunday, Harrisburg at 4.30 a. m., Washington, 7.49 a. m. Pullman sleeping cars to Philadelphia and passenger coaches to Philadelphia and Baltimore.

5.37 a. m.—Train 3. (Daily.) For Erie and Canandaigua and intermediate stations, arriving at Buffalo and Niagara Falls, with through Pullman cars to Erie and Elmira, and passenger coaches to Erie and Rochester.

10.17 a. m.—Train 15. (Daily.) For Lock Haven and intermediate stations.

1.56 p. m.—Train 11. (Daily except Sunday.) For Kane, Canandaigua and intermediate stations, Rochester, Buffalo and Niagara Falls, with through passenger coaches to Kane and Rochester, and Parlor car to Rochester.

5.59 p. m.—Train 1. (Daily except Sunday.) For Kenovo, Elmira and intermediate stations.

9.45 p. m.—Train 13. (Daily except Sunday.) For Williamsport and intermediate stations.

THROUGH TRAINS FOR MONTANDON FROM EAST AND SOUTH.
Train 15 leaves New York 12.15 night, Philadelphia 4.30 a. m., Baltimore 4.45 a. m., Harrisburg 8.15 a. m., daily, Wilkesbarre, 7.25 a. m. Daily except Sunday, arriving at Montandon 10.17 a. m.
Train 11 leaves Philadelphia 8.50 a. m., Washington 7.50 a. m., Baltimore, 8.53 a. m., Wilkesbarre 10.15 a. m. (Daily except Sunday) arriving at Montandon 1.56 p. m., with parlor car from Philadelphia and through passenger coaches from Philadelphia and Baltimore.

Train 1 leaves New York 9.30 a. m., Philadelphia, 12.25 p. m., Washington at 10.30 a. m., Baltimore at 11.40 a. m., Wilkesbarre 3.12 p. m., arriving at Montandon at 5.59 p. m., week days, with through passenger coaches from Phila. and Baltimore.

Train 13 leaves New York 2.10 p. m., week days, 2.00 p. m. Sunday, Philadelphia 4.40 p. m., Baltimore 4.45 p. m., arriving at Montandon 9.45 p. m. Through Parlor Car and passenger coach from Philadelphia.

Train 3 leaves New York at 8.00 p. m., Philadelphia 11.30 p. m., Washington 10.40 p. m., Harrisburg 11.50 p. m. (Daily) arriving at Montandon at 5.37 a. m. with through Pullman sleeping cars from Phila., Washington and Baltimore and through passenger coaches from Philadelphia and Baltimore.

LEWISBURG AND TYONE RAILROAD. Daily Except Sunday.

Westward. Eastward.
P. M. A. M. STATIONS. A. M. P. M. P. M.
1 58 5 40 Montandon 9 10 4 05
2 17 6 18 Lewisburg 10 40 4 47
2 22 6 23 Biehl 8 52 4 39
2 22 6 28 Vicksburg 8 47 4 35
2 23 6 37 Millburg 8 28 4 27
2 43 6 50 Millmont 8 25 4 15
2 51 6 58 Glen Iron 8 17 4 07
3 29 7 27 Paddy Mountain 48 40
3 30 7 28 Coburn 7 38 3 50
3 37 7 45 Zerby 7 30 3 25
3 47 7 55 Rising Spring 7 21 3 14
3 53 8 02 Penn Gate 7 14 3 07
4 01 8 09 Centre Hall 7 06 3 01
4 07 8 16 Gregg 7 01 2 54
4 13 8 23 Linden Hall 6 52 2 47
4 18 8 28 Oak Hall 6 47 2 42
4 22 8 32 Lenont 6 42 2 37
4 27 8 37 Dale Summit 6 38 2 33
4 37 8 47 Pleasant Gap 6 28 2 23
4 49 8 50 Azzemann 6 23 2 19
4 49 8 55 Bellefonte 6 20 2 15

Additional trains leave Lewisburg for Montandon at 5.20 a. m., 10.00 a. m., 1.20, 5.45 and 7.40 p. m. returning leave Montandon for Lewisburg at 8.20 a. m., 10.19 a. m., 3.02 p. m., 6.00 p. m., and 8.00 p. m. On Sundays trains leave Montandon 10.18 a. m. and 8.00 p. m., returning leave Lewisburg 10.23 a. m. and 8.05 p. m.

For rates, maps, etc., call on agent or address Thos. E. Watt, P. A. W. D., 110 Fifth ave., Pittsburg, S. M. PREVOST, J. R. WOOD, General Manager. Gen'l Pass'g Agt.

PATENTS

Conveys, and Trade-Marks obtained, and all Patent business conducted for MODERATE FEES. Our Office is Opposite U. S. Patent Office, and we can secure patent in less time than those remote from Washington.

Send model, drawing or photo., with description. We advise if patentable or not, free of charge. Our fee not due till patent is secured. A PAMPHLET, "How to Obtain Patents," sent cost of same in the U. S. and foreign countries sent free. Address:

C. A. SNOW & CO. OFFICE: PATENT OFFICE, WASHINGTON, D. C.

HENCH & DROMGOLD'S

SAW MILL AND ENGINES

A wonderful improvement in Friction Feeds and Gig-Backs, Rock motion of Carriage 3 times as fast as any other in the market. Friction Catch Feed, causing all the feed gearing to stand still while backing; great saving in power and wear. Send 4 cents in stamps for large Catalogue and prices. Also Spring Harrows, Hay Rakes, Cultivators, Corn Planters, Shellers, etc. Address: HENCH & DROMGOLD, Mfrs., York, Pa.

GET AN EDUCATION.

Education and fortune go hand in hand. Get an education at the Central State Normal School, Lock Haven, Pa. First-class accommodations and low rates. State aid to students. For illustrated catalogue address, JAMES ELDON, Ph. D., Principal, Lock Haven, Pa.

AFTER ALL OTHERS FAIL Consult the Old Reliable DR. LOBB

Specialist 329 N. 15th St. Below Callowhill Philadelphia, Pa.

Thirty years' continuous practice in all special diseases of both sexes. Dr. Lobb guarantees to permanently cure all cases of Ouzanism, errors of youth and diseases of the blood, nerve skin, kidneys, and general and local debility arising from impurities, excesses or abuse and restore health and vigor to the unfortunate. Thirty years' continuous practice as a specialist in this class of diseases is sufficient evidence of his skill in the treatment of his patients. Consultations and examinations free and strictly confidential. Office hours, daily and Sundays, from 9 a. m. to 5 p. m., and 8 to 9 evenings. Call or send for free book on Errors of Youth and obscure diseases of both sexes.

ANSY-PILLS!

ALL DRUG STORES. SAFE AND PURE. SEND 4c. FOR WOMAN'S SAFE STEEL-BRAND. WILCOX DRUGGISTS CO., PHILA., PA.