

COBURN.

Death of Mrs. Elizabeth Evert Last Wednesday, Aged 89 Years.

H. I. Talley and lady, of Philadelphia, are registered at the Coburn House. They expect to remain in our Mountain City for several weeks.

Wm. C. Sheesley left for Sugar Valley on Tuesday morning, where he will saw for Jacob Emerick on his large steam saw mill.

The deputy sheriff Mr. C. A. Weaver, was at this place on Saturday. He had professional business at Ingleby station, and took the train here in the afternoon for his home at Bellefonte.

Mr. Lewis Tittle, one of the oldest hotelists of Danville, Pa., was at this place on Saturday, being called here by the death of his aunt, Mrs. Elizabeth Evert.

Mr. Luther Guisewite has his chop mill in full blast and expects to have his creamery in running order in the course of a few weeks.

Quarterly Conference was held here in the United Evangelical church on Saturday evening and on Sunday forenoon and evening, the new presiding elder, Rev. Stapleton officiating, assisted by the regular pastor, Rev. Lohr. On Sunday forenoon the Sacraments were administered to a large number of members, quite a number being present from other charges; the presiding elder is a very ready talker and expounder of the truth, and his discourses were listened to with marked attention.

Mrs. Elizabeth Evert, a very old and much respected lady departed this life on Wednesday of last week at the advanced age of eighty-nine years; had she lived a few days longer she would have reached the ninety years. Her maiden name was Elizabeth Reber, her father having emigrated from the state of Maryland to Brush Valley at a very remote period of our county's history. She was married to Jacob Evert in the year 1825; this union was blessed with ten children, four sons and six daughters, one son and four daughters having preceded her to the grave. Her husband also departed from this sphere of action in the year 1878, at the age of seventy-nine years. This remarkable woman has left quite a numerous progeny, namely: ten children, 25 grand-children, 46 great-grand-children, and six great-great-grand-children, in all 87; of this number 5 of the children are dead, 7 grand-children, 12 great-grand-children, and one great-great-grand-child, in all 25, thus leaving 62 offspring to survive her. The funeral services were held in the United Evangelical church of this place, of which church she was one of the main pillars for many years, on Saturday forenoon, conducted by Rev. Stapleton and Lohr; her remains were then conveyed to Paradise cemetery and interred there, followed by a large number of sorrowing friends. May she rest in peace.

Cheap Coal in New England.

Within a few days the New York and New England railroad company has contracted for 50,000 tons of bituminous coal from the Beech Creek region, to be delivered in Boston at a cost of \$2.50 per ton. This should kill the Nova Scotia bugaboo, which has been scaring the Pennsylvania, Maryland and Virginia coal operators, who have predicted ruin to their New England trade as the result of the reduction of the duty from 75 to 40 cents.

How to Preserve Eggs.

The requisites for preserving eggs are a pure, cool air, even temperature and fresh, whole eggs. One stale or cracked egg is liable to injure all within its far reaching influence. Under these conditions eggs wrapped in paper and hung in a basket from the cellar ceiling will keep for many weeks.

The Cape Fad is With Us.

The cape fad is on. Nearly everybody must have a cape this spring. The latest sleeves make it almost impossible to wear anything else for an outside wrap and the fancy price at which these natty trifles are held will drive a good many women to make their own capes. Fashions further decree they shall be silk lined.

Died at Fiedler.

Mr. B. B. Stover, an old citizen of Fiedler, died on Tuesday at the advanced age of seventy-one years, after a long illness incumbent on old age. He died at the home of his son J. D. Stover.

Death of an Infant.

An infant child of Mr. Henry Kreamer, of Aronsburg, died on Tuesday. Some time ago his twin children died of whooping cough.

—Lyons & Co., Bellefonte, are making a big drive in shoes. They carry a full line in this department, and at prices that are way below their competitors. It is useless to pay a big price for shoes when you can get the same article several dollars cheaper at Lyons. Don't pay any dealer an extravagant price, until you inspect their stock.

—A new spring suit from Lewins, Bellefonte, is the proper thing now in clothing.

GRAIN MARKET.

Table with 2 columns: Grain type and Price. Includes Wheat, Rye, Corn, Oats, Barley, Buckwheat.

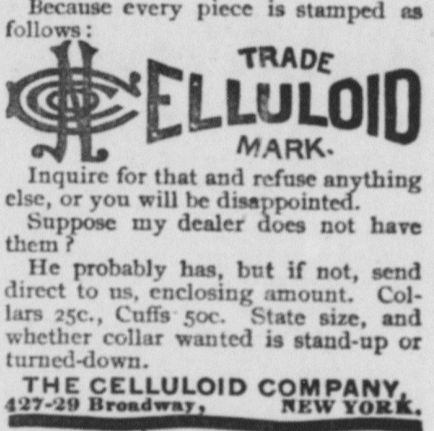
PRODUCE AT STORES.

Table with 2 columns: Produce type and Price. Includes Butter, Eggs, Lard, Shoulders, Ham, Tallow, Potatoes, Sides.

THAT'S QUEER!



You say a collar and cuff that are waterproof? Yes. And perspiration will not affect them? Yes. And when dirty you need only wipe them off with a wet cloth or sponge? Yes. Wonderful! How are they made? A linen collar covered on both sides with waterproof "CELLULOID." Looks exactly like a linen collar. Is it the only waterproof collar and cuff made? No, but it is the only one made with the linen interlining and consequently the only one that can give entire satisfaction, because it is the best. How can I know that I get the right kind? Because every piece is stamped as follows:



Inquire for that and refuse anything else, or you will be disappointed. Suppose my dealer does not have them? He probably has, but if not, send direct to us, enclosing amount. Collars 25c., Cuffs 50c. State size, and whether collar wanted is stand-up or turned-down. THE CELLULOID COMPANY, 427-29 BROADWAY, NEW YORK.

PATENTS CAVEATS, TRADE MARKS, COPYRIGHTS. CAN I OBTAIN A PATENT? For a...

Going to Buy a Watch? If so, buy one that cannot be stolen. The only thief-proof Watches are those with Non-pull-out.



BOWS. Here's the Idea: The bow has a groove on each end. A collar runs down inside the pendant (stem) and fits into the grooves, firmly locking the bow to the pendant, so that it cannot be pulled or twisted off.

To be sure of getting a Non-pull-out, see that the case is stamped with this trade mark. It cannot be had with any other kind. Send a postal for a watch case opener to the famous Boss Filled Case makers.

Keystone Watch Case Co., PHILADELPHIA.



You ought to get Dr. Day's Strong Cough Syrup.



BICYCLES, BICYCLES, VEHICLES 1-2 PRICE. HIGHER, FASTER, MORE DURABLE, BETTER QUALITY, LOWER PRICES. BREWSTER, MFG. CO., HOLLY, MICH.

ANSY PILLS! ALL SAFE AND SURE. SEND 4c. FOR WOMEN'S SAFE GUARD. WILSON SPECIFIC CO., PHILA., PA.

YOU CAN GET IT AT FAUBLES.

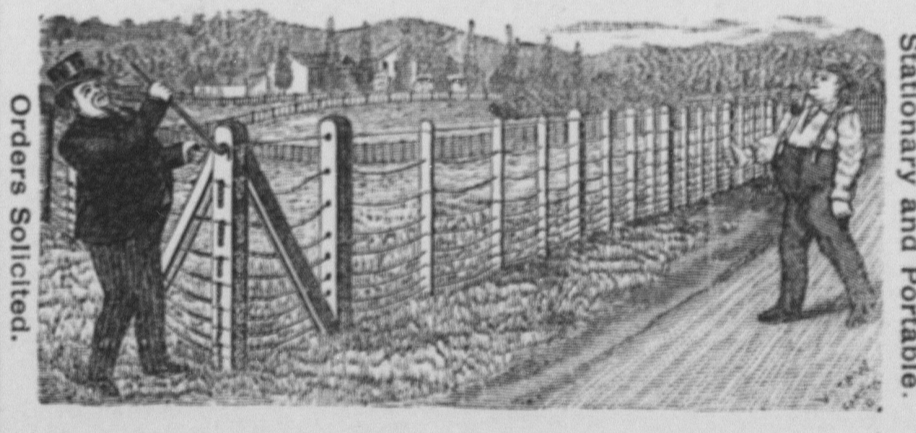
Children's all wool Suits, good, honest wearing goods, at \$2.00, 2.50, 3.00, 3.50. Other stores will ask you from 4.00 to 7.00 for the same goods. You will buy if you see them.

Your Money Back - For The Asking

Men's all wool Cheviot and Clay Wooster Suits, strictly all wool, at 6.00, 7.00, 8.00 and 10.00. You will wonder how we can sell these goods at such prices. You will save money by looking at these goods.

Your Money Back For The Asking.

Say, Farmers!



W. W. DELLETT, Gen'l Agt., Centre Hall, Pa. OR BUCHANAN FENCE CO., SMITHVILLE, OHIO.

GREAT STOCK! VAST ASSORTMENT! LOW PRICES!

Our stock of WINTER DRESS GOODS, UNDERWEAR, CLOTHING, BOOTS and SHOES, Etc., of all kinds is the most complete in the valley and our prices worry competition. In fact our competitors can't understand how we can sell goods at such low figures. We are satisfied with a moderate profit, and you get full value on every purchase made. You will probably need an Overcoat or Gloves, and we are sure we have just what you want. A full line of all kinds of Rubber Goods in stock. Produce of all kinds wanted.

HARPER & KREAMER.

THE SEASON IS HERE FOR WALL PAPER & FURNITURE

We are now prepared to supply you with Wall Paper, and all kinds of Furniture at low prices. Come and see us DAUBERMAN & COODHART.

ATTORNEYS.

IRA C. MITCHELL, Attorney-at-Law, Bellefonte, Pa. Office, Room No. 10, Crider's Exchange. oct194

JOHN KLINE, Attorney at Law, BELLEFONTE, PA. Office on second floor of Furst's building, north of Court House. Can be consulted in German and English. 'an87

J. H. ORVIS, C. M. BOWER, E. L. ORVIS (ORVIS, BOWER & ORVIS), Attorneys at Law, BELLEFONTE, PA. Office in Crider's Exchange building on second floor. 'an86

D. F. FORTNEY, Attorney at Law, BELLEFONTE, PA. Office in Conrad Building. Jan92

CLEMANT DALE, Attorney at Law, BELLEFONTE, PA. Office N. W. corner Diamond, two doors from First National Bank. Jan87

W. G. RUNKLE, Attorney-at-Law, BELLEFONTE, PA. All kinds of legal business attended to promptly. Special attention given to collections. Office, 2d floor Crider Excha. ge. 'an86

J. L. SPANGLER, C. P. HEWES, SPANGLER & HEWES, Attorneys at Law, BELLEFONTE, PA. Special attention to collections. Practice in all the courts. Consultation in German and English. Jan92

S. D. GETTIG, ATTORNEY-AT-LAW, BELLEFONTE, PA. Collections and all legal business attended to promptly. Consultations German and English. Office in Exchange Building. 'an86

N. B. SPANGLER, ATTORNEY-AT-LAW, BELLEFONTE, PA. Practices in all the courts. Codification in English and German. Office, Crider Exchange Building. nov193

BANKS.

CENTRE COUNTY BANKING CO., BELLEFONTE, PA. Receive deposits. Discount notes. Jan92 J. D. SHUGERT, Cashier.

HOTELS.

UTAH HOUSE, POTTERS MILLS, PA. James S. Reish, Proprietor. Opened again, the house having been remodeled, repaired, and newly furnished. The public will find it first-class in table, and all other respects. Summer boarders taken on reasonable terms. Healthy locality, fishing and hunting grounds convenient. lapr6m

IRVIN HOUSE, S. Woods Caldwell, Proprietor, LOCK HAVEN, PA. Terms reasonable. Good sample rooms on first floor. Jan92

BUSH HOUSE, W. L. Daggett, Proprietor, BELLEFONTE, PA. Special attention given to country trade. ap30

NEW GARMAN HOUSE, Opposite Court House, BELLEFONTE, PA. New building, new furniture throughout, steam heat, electric bells and all modern improvements. Good table and moderate charges. 'an86

SPRING MILLS HOTEL, D. H. Ruhl, Proprietor, SPRING MILLS, PA. Free bus to and from all trains.

NEW BROCKERHOFF HOUSE, J. M. Neubauser Proprietor, BELLEFONTE, PA. Free bus to and from all trains. Good sample rooms on first floor. Special rates to witnesses and jurors.

OLD FORT HOTEL, EDWIN RUIHL, Proprietor. This old and well known house has been newly furnished throughout. Accommodations first-class and rates reasonable. Private parties can have special accommodation. ap94tf

A. B. HARTER, AUCTIONEER, MILLHEIM, PA. LOCATED IN ONE OF THE MOST BEAUTIFUL AND HEALTHFUL SPOTS IN THE ALLEGHENY REGION; UNDENOMINATIONAL; OPEN TO BOTH SEXES; TUITION FREE; BOARD AND OTHER EXPENSES VERY LOW; NEW BUILDINGS AND EQUIPMENT.

LEADING DEPARTMENTS OF STUDY. 1. AGRICULTURE (Three Courses); and AGRICULTURAL CHEMISTRY; with constant illustrations on the Farm and in the Laboratory. 2. BOTANY and HORTICULTURE; theoretical and practical. Students taught original study with the microscope. 3. CHEMISTRY; with an unusually full and thorough course in the Laboratory. (CIVIL ENGINEERING.) 4. ELECTRICAL ENGINEERING; (course in MECHANICAL ENGINEERING) are accompanied with very extensive practical exercises in the Field, the Shop, and the Laboratory. 5. HISTORY; Ancient and Modern, with original investigation. 6. INDUSTRIAL ART AND DESIGN. 7. LADIES' COURSE IN LITERATURE and SCIENCE; Two years. Ample facilities for Music, vocal and instrumental. 8. LANGUAGE and LITERATURE; Latin (optional); French, German and English (required); one or more continued through the entire course. 9. MATHEMATICS and ASTRONOMY; pure and applied. 10. MECHANIC ARTS; combining shop work with study, three years' course; New building and equipment. 11. MENTAL, MORAL and POLITICAL SCIENCE; Constitutional Law and History Political Economy, etc. 12. MILITARY SCIENCE; instruction theoretical and practical, including each arm of the service. 13. PREPARATORY DEPARTMENT. Two years—carefully graded and thorough. Fall term opens Sept. 14, 1892. Examinations for admission, June 16, and Sept. 13. Commencement week, June 12-15, 1892. For Catalogue or other information, address GEO. W. ATHERTON, LL.D., Pres., State College, Centre Co., Pa.

WANTED RELIABLE MEN to sell our choice and complete line of Nursery stock. Highest salary and commission paid weekly, paying and permanent position guaranteed and success insured to good men. Special inducements to beginners, experience not necessary. Exclusive territory and your own choice of same given. Do not delay. Apply to ALLEN NURSERY CO., Rochester, N. Y. mar7-4m

WANTED-SALESMEN We want a few men to sell a Choice Line of Nursery Stock. We cannot make you rich in a month but can give you steady employment and will pay you well for it. Our prices correspond with the times. Write for terms and territory to THE HAWKS NURSERY CO., Rochester, N. Y. mar7-4m

PENNSYLVANIA R. R.

Philadelphia & Erie R. R. Division and Northern Central Railway. Time Table, in effect Nov. 25, 1894.

TRAINS LEAVE MONTANDON, EASTWARD. 9:18 a. m.—Train 14. (Daily except Sunday) For Sunbury, Wilkesbarre, Hazleton, Pottsville, Harrisburg and intermediate stations, arriving at Philadelphia at 3:50 p. m., New York, 5:55 p. m., Baltimore, 8:10 p. m., Washington, 4:30 p. m., connecting at Philadelphia for all sea-shore points. Through passenger coaches to Philadelphia and Baltimore. Parlor cars to Philadelphia.

1:37 p. m.—Train 8. (Daily except Sunday.) For Sunbury, Harrisburg and intermediate stations, arriving at Philadelphia at 6:59 p. m., New York, 9:35 p. m., Baltimore, 6:45 p. m., Washington at 7:50 p. m. Parlor car through to Philadelphia and passenger coaches to Philadelphia and Baltimore.

5:01 p. m.—Train 12. (Daily except Sunday.) For Sunbury, Harrisburg, Hazleton, Pottsville, Harrisburg and intermediate points, arriving at Philadelphia at 11:15 p. m., New York 3:55 a. m., Baltimore 10:40 p. m. Passenger coaches to Wilkesbarre and Philadelphia.

7:58 p. m.—Train 6. (Daily.) For Sunbury, Harrisburg and all intermediate stations, arriving at Philadelphia at 4:30 a. m., New York at 7:35 a. m., Pullman sleeping cars from Philadelphia and New York. Philadelphia passenger cars remain in sleeper undisturbed until 7:50 a. m.

1:29 a. m.—Train 4. (Daily.) For Sunbury, Harrisburg and intermediate stations, arriving at Philadelphia at 5:52 a. m., New York, 8:22 a. m., week days, 10:35 a. m. Sunday, Baltimore, 6:20 a. m., Washington, 7:40 a. m. Pullman sleeping cars to Philadelphia and passenger coaches to Philadelphia and Baltimore.

5:37 a. m.—Train 3. (Daily.) For Erie and Canadigua and intermediate stations, Rochester, Buffalo and Niagara Falls, with through Pullman cars to Erie and Elmira, and passenger coaches to Erie and Rochester.

10:17 a. m.—Train 15. (Daily) For Lock Haven and intermediate stations. 1:56 p. m.—Train 11. (Daily except Sunday.) For Kane, Canadigua and intermediate stations, Rochester, Buffalo and Niagara Falls, with through passenger coaches to Kane and Rochester, and Parlor car to Rochester.

5:59 p. m.—Train 1. (Daily except Sunday.) For Sunbury, Harrisburg and intermediate stations, arriving at Philadelphia at 6:59 p. m., New York, 9:35 p. m., Baltimore, 6:45 p. m., Washington at 7:50 p. m. Parlor car through to Philadelphia and passenger coaches to Philadelphia and Baltimore.

11:29 p. m.—Train 13. (Daily except Sunday.) For Sunbury, Harrisburg and intermediate stations, arriving at Philadelphia at 1:25 p. m., New York, 3:30 p. m., Baltimore, 10:15 p. m., Washington at 1:15 p. m. Parlor car through to Philadelphia and passenger coaches to Philadelphia and Baltimore.

11:29 p. m.—Train 15. (Daily except Sunday.) For Sunbury, Harrisburg and intermediate stations, arriving at Philadelphia at 1:25 p. m., New York, 3:30 p. m., Baltimore, 10:15 p. m., Washington at 1:15 p. m. Parlor car through to Philadelphia and passenger coaches to Philadelphia and Baltimore.

LEWISBURG AND TYONE RAILROAD. Daily Except Sunday. Westward. Eastward. P. M. P. M. STATIONS. A. M. P. M. P. M.

Additional trains leave Lewisburg for Montandon at 5:30 a. m., 10:09 a. m., 12:35 and 7:40 p. m., returning leave Montandon for Lewisburg at 9:20 a. m., 10:19 a. m., 5:02 p. m., 6:00 p. m., and 8:00 p. m. On Sundays trains leave Montandon 10:15 a. m., and 8:00 p. m., returning leave Lewisburg 10:25 a. m., and 8:00 p. m.

For rates, maps, etc., call on agent or address: Thos. E. Watt, F. A. W. D., 110 Fifth Ave., Pittsburg, S. M. PREVOST, General Manager. Gen'l Passenger Agt.

AFTER ALL OTHERS FAIL Consult the Old Reliable Specialist DR. LOBB 329 N. 15th St. Philadelphia, Pa.

Thirty years' continuous practice in all special diseases of both sexes. The terrible result of self-abuse, the humiliating condition of impotency, the misery of sleeplessness, loss of appetite and all the wretchedness resulting from blood-poisoning, diseases of the nervous system, skin, bladder, and kidneys can be overcome by consulting Dr. Loeb, who will guarantee a permanent cure and restoration to health and manly vigor in every case he treats. Consultation and examination free and strictly confidential. Thirty years' continuous practice is proof enough of his ability. Office hours, daily and Sundays, from 9 a. m. to 8 p. m., and 6 to 9 evenings. Call or send for free book on Errors of Youth and obscure diseases of both sexes.

PATENTS Caveats, and Trade-Marks obtained, and all Patent business conducted for MODERATE FEES. Our Office is Opposite U. S. Patent Office, and we can secure patent in less time than those remote from Washington. Send model, drawing or photo., with description. We advise, if patentable or not, free of charge. Our fee not due till patent is secured. A PAMPHLET, "How to Obtain Patents," with cost of same in the U. S. and foreign countries sent free. Address: C. A. SNOW & CO., OPP. PATENT OFFICE, WASHINGTON, D. C.

HENCH & DROMGOLD'S SAWMILL AND ENGINES A wonderful improvement in Friction Feeds and Gig-Backs, Back motion of Carriage 3 times as fast as any other in the market. Friction Catch Feed, causing all the feed gearing to stand still while back gear is great saving in power and wear. Second Friction Catch Feed, for large sawmills and mills. Also Spring Harrows, Hay Rakes, Cultivators, Corn Planters, Shelters, etc. Send for paper. HENCH & DROMGOLD, N.Y., York, Pa. GET AN EDUCATION. Education and fortune go hand in hand. Get an education at the Central State Normal School, Lock Haven, Pa. First-class accommodations and low rates. State aid to students. For illustrated catalogue address, JAMES ELDON, Fr. D. Principal, Lock Haven, Pa. nov17