

Poe Mills.
T. O. Keen, of Ingleby, purchased the saw mill of Amiller Brothers at Cherry Run last week.
F. W. Confer, the inventor of the washing machine, has made some improvements on his machine. He has it so arranged that it runs the clothes to the line.
T. R. Park made things lively here on New Year's with his performing monkey.
Mrs. Agnes Billmyer intends moving to West Poe Valley to oversee the boarding house of Maurer & Wagner, Monday, Dec. 31, was dog day at Paddy Mountain. Train No. 112 killed four and we still have more to spare.
D. T. Raymon and Lewis Wittkins spent New Year at Axemans with the former's brother-in-law, W. S. White.
Mrs. Osman, of Boalsburg, is visiting her son James at this place.

Warned a Viper.
Jeweler George Bollinger, of Woodland, was called upon during the holidays by Kilby McComby whom Mr. Bollinger had known when he was a boy. McComby was hard up and Mr. Bollinger took pity on him and took him to his house and fed him and clothed him. There was a church festival that evening and Mr. Bollinger and his wife went to it, leaving McComby to take charge of the children. When they returned, McComby had left, taking with him watches and jewelry and money to the amount of \$300. The ingrate was arrested at Clearfield with the goods in his possession and is now in jail waiting trial. The penitentiary is hardly severe enough punishment for that dirty scoundrel.—Phillipsburg Ledger.

Officers Elected.
At school directors association meeting December 19th, the following officers were elected for the ensuing year: President, Dr. Theodore S. Christ, of Lemont; Vice President, Owen Underwood, of Fleming; Secretary and Treasurer, W. B. Rankin, of Bellefonte; Executive Committee, D. F. Fortney, Bellefonte, J. C. Henderson, Huston; W. E. Irwin, Phillipsburg; J. T. Potter, Potter; Charles Wolf, Haines.

The Musical Convention.
Last week's musical convention in the Reformed church in this place was a success financially and as to the music rendered. Prof. P. H. Meyer did his utmost to make the concert Thursday and Friday evenings a rich musical feast and his class proved sufficient for the end in view. The net profits to the church, above all expenses, footed up \$80.

—The merchant tailoring establishment at Lewins, Bellefonte, has a long-standing reputation of furnishing the best fitting clothes in this part of the state. When you see a well-dressed young man you can put it down that he gets his clothing at this store.
—Subscribe for the REPORTER, \$1.50.

THE PRESS
PHILADELPHIA,
DAILY SUNDAY WEEKLY
FOR 1895.

Pennsylvania's Greatest Family Newspaper.
It Prints All the News.
Pre-eminently a Family Newspaper.
appealing directly to the interests of every member of the household, by the absence of anything of an objectionable character in either of its news, literary or advertising columns.

AS AN ADVERTISING MEDIUM THE PRESS IS AMONG THE BEST IN THE UNITED STATES.
PRESS WANT ADS give the greatest results. The people believe in them and use them. THE PRESS prints as high as 4,500 want advertisements in a single issue and has received 15,000 answers to Press Want Ads in a single day. This shows why Press Want Ads give the greatest results.

RATES FOR CLASSIFIED ADVERTISEMENTS, Prepaid:
"Situations Wanted," 1/2 cent a word
"Help Wanted," 1 cent a word
"Boarding," 2 cents a word
"Rooms," 2 cents a word
"For Sale" and "Lost," 1 cent a word
"Business Opportunities," 1 cent a word
For small amounts one-cent or two-cent stamps are accepted same as cash.

TERMS OF THE PRESS.
By mail, postage free in the United States, Canada and Mexico.
Daily (except Sunday), one year, \$6.00
"Including Sunday," one year, 7.50
Sunday, one year, one month, .65
Weekly Press, one year, 2.00
Drafts, checks and other remittances should be made payable to the order of
THE PRESS COMPANY, Limited,
Philadelphia, Pa.

GET AN EDUCATION.
Education and fortune go hand in hand. Get an education at the Cent-ale Normal School, Lock Haven, Pa. First-class accommodations and low rates. State aid to students. For illustrated catalogue address,
JAMES ELDON, Ph. D., Principal,
Lock Haven.

ARMER'S MUTUAL FIRE INSURANCE
Co. of Centre County, Pa.—The annual meeting of the members and the election of twelve directors to manage the affairs of the company for the ensuing year will be held at the house of D. L. Bartges, at Centre Hall, on Monday, January 14th, 1895, between the hours of 10 a. m. and 3 p. m. of said day. Members are generally requested to attend.
FRED KURTZ, President.
D. F. LUSE, Secretary.

ADMINISTRATOR'S NOTICE—LETTERS
of Administration on the estate of Polly Mullinger, dec'd., late of Potter township, having been lawfully granted to the undersigned, he would respectfully request all persons knowing themselves indebted to the estate to make immediate payment and those having claims against the same to present them duly authenticated for settlement.
GEO. W. SPANGLER,
Administrator. Tusseyville, dec6-6.

MONEY FOR EVERYONE.
I can't understand why people complain of hard times, when any woman or man can make from \$5 to \$10 a day easily. All have heard of the wonderful success of the Climax Dish Washer; yet we are apt to think we can't make money selling it; but anyone can make money, because every family wants one. I made \$478.36 in the last three months, after paying all expenses and attended to my regular business besides. You don't have to canvass; as soon as people know you have it for sale they send for a Dish Washer. Address the Climax Manufacturing Co., Columbus, Ohio, for particulars. Go to work at once, and you will very soon have a full pocket book and a light heart. I think it a duty to inform each other of such opportunities, and I also think it a duty to improve them while we may. Try it at once, and publish your experience so others may be benefitted.

From the Phillipsburg Journal: The Centre Hall Reporter, one of the neatest, sprightliest and best papers in the county, entered its 68 volume with this week's issue. Unlike the human kind the older it grows the brighter and fresher it appears. Long may it wave.

—We are selling overcoats fit for a king at prices that cause our competitors excruciating pain. Get one while they last.—Lewins, Bellefonte.



You say a collar and cuff that are waterproof?
Yes.
And perspiration will not affect them?
Yes.
And when dirty you need only wipe them off with a wet cloth or sponge?
Yes.
Wonderful! How are they made?
A linen collar covered on both sides with waterproof "CELLULOID." Looks exactly like a linen collar.
Is it the only waterproof collar and cuff made?
No, but it is the only one made with the linen interlining and consequently the only one that can give entire satisfaction, because it is the best.
How can I know that I get the right kind?
Because every piece is stamped as follows:



Inquire for that and refuse anything else, or you will be disappointed.
Suppose my dealer does not have them?
He probably has, but if not, send direct to us, enclosing amount. Collars 25c., Cuffs 50c. State size, and whether collar wanted is stand-up or turned-down.
THE CELLULOID COMPANY,
427-29 Broadway, NEW YORK.

A STRANGE CASE.

How an Enemy was Foiled.
The following graphic statement will be read with intense interest: "I cannot describe the numb, creepy sensation that existed in my arms, hands and legs. I had to rub and beat those parts until they were sore, to overcome in a measure the dead feeling that had taken possession of them. In addition, I had a strange weakness in my back and around my waist, together with an indescribable 'gone' feeling in my stomach. Physicians said it was creeping paralysis, from which, according to their universal conclusion, there is no relief. Once it fastens upon a person, they say, it continues its insidious progress until it reaches a vital point and the sufferer dies. Such was my prospect. I had been doctoring a year and a half steadily, but with no particular benefit, when I saw an advertisement of Dr. Miles' Restorative Nervine, procured a bottle and began using it. Marvelous as it may seem, but a few days had passed before every bit of that creepy feeling had left me, and there has not been even the slightest indication of its return. I now feel as well as I ever did, and have gained ten pounds in weight, though I had run down from 170 to 137. Four others have used Dr. Miles' Restorative Nervine in their cases as in mine."—James Kane, La Rue, O.
Dr. Miles' Restorative Nervine is sold by all druggists on a positive guarantee, or sent direct by Dr. Miles Medical Co., Elkhart, Ind., on receipt of price, \$1 per bottle, six bottles for \$5, express prepaid. It is free from opiates or dangerous drugs.

You ought to get Dr. Day's Strong Cough Syrup.

AN IMPORTANT CLUB OFFER
SCRIBNER'S MAGAZINE

By special arrangement with the publishers we are enabled to offer SCRIBNER'S MAGAZINE for 1895 and a full year's subscription to the REPORTER for \$4.00. If purchased separately these periodicals would cost \$5.00.

IT IS THE PLAN OF SCRIBNER'S to give its readers next year a history of the past 25 years in the United States. (1869-'95.) These years have been unparalleled in the history of the world for national development and material progress. The narrative will be written in a graphic and picturesque style by President Andrews, of Brown University, and capable artists will illustrate it.

ROBERT GRANT, whose "Reflections of a Married Man" will long be remembered, has written a series of articles on "The Art of Living," in which he sets himself to solve, as far as such problems can be solved, questions which beset every well-to-do family: The Income—The Dwelling—Household Expenses—Education of Children—Married and Single Life—The Summer Problem, etc. Beautifully illustrated.

GEORGE MEREDITH, whom more than one good authority has pronounced the greatest of living novelists, has written a strong serial, "The Amazing Marriage," to begin in January.

W. D. HOWELLS will contribute a novel entitled "The Story of a Play."

IN THE LAND OF DON QUIXOTE will be a series of three sketches illustrated by a number of Daniel Vierge's wonderful drawings.

SINGLE ARTICLES in great variety have been arranged for and the illustrations will be elaborate.

Scribner's for 1895 Will be Better Than Ever.
If you desire only SCRIBNER'S MAGAZINE remit \$3.00 to the Publishers:
CHARLES SCRIBNER'S SONS, 153-157 Fifth Avenue, N. Y.

GREAT STOCK!
VAST ASSORTMENT!
LOW PRICES!
Our stock of WINTER DRESS GOODS, UNDERWEAR, CLOTHING, BOOTS and SHOES, Etc., of all kinds is the most complete in the valley and our prices worry competition. In fact our competitors can't understand how we can sell goods at such low figures. We are satisfied with a moderate profit, and you get full value on every purchase made. You will probably need an Overcoat or Gloves, and we are sure we have just what you want. A full line of all kinds of Rubber Goods in stock. Produce of all kinds wanted.

HARPER & KREAMER.

JUST A LITTLE BETTER, JUST A LITTLE BRIGHTER, THAN ALL OTHERS
Is what you want in your newspaper.

THE PITTSBURGH CHRONICLE TELEGRAPH FILLS THE WANT.
It is the leading family paper of Western Pennsylvania, Eastern Ohio and West Virginia. It gives all the news of the world. Its news from foreign lands is full and accurate. The only paper in Western Pennsylvania receiving the day reports of the Associated Press.

MARKET REPORTS.
Its market reports are recognized authority, always being complete and correct. Its general political news, editorials and discussions are comprehensive and interesting.
8-10-12 and 16 Pages
One Cent a Copy.
Delivered in all towns daily for Six Cents a Week.
Mailed for 25c a Month.

The Sun
The first of American Newspapers,
CHARLES A. DANA, Editor.

The American Constitution, the American Idea, the American Spirit. These first, last, and all the time, forever.
Daily, by mail, \$6 a year
Daily and Sunday, by mail \$8 a year
The Weekly, \$1 a year

THE SUNDAY SUN,
is the greatest Sunday Newspaper in the World.
Price 5c a copy. By mail, \$2 a year
Address THE SUN, New York.

FARM SALE—A FARM SITUATED ONE mile west of Millheim along turpentine road, containing 165 ACRES, 100 well cultivated, with stone Dwelling-House, Bank barn, and outbuildings. A fine spring of water, young orchard, and all improvements in No. 1 condition.
ALSO—100 acres, more or less within Millheim borough, in excellent condition, good location, being in close proximity to church, schools, market, etc.
For terms apply to A. J. GEHART, dec'd.
Millheim, Pa.
—Don't shiver; get one of those good storm coats at Lewin's, Bellefonte, and be comfortable. Low price.

HAVE YOU READ THE PHILADELPHIA TIMES THIS MORNING?

THE TIMES is the most extensively circulated and widely read newspaper published in Pennsylvania. Its discussion of public men and public measures is in the interest of public integrity, honest government and prosperous industry, and it knows no party or personal allegiance in treating public issues. In the broadest and best sense a family and general newspaper.

THE TIMES aims to have the largest circulation by deserving it, and claims that it is unsurpassed in all the essentials of a great metropolitan newspaper. Specimen copies of any edition will be sent free to any one sending their address.
TERMS—DAILY, \$3 per annum; \$1 for four months; 30c per month; delivered by carriers for 6c per week. SUNDAY EDITION, twenty-four large, handsome pages—168 columns, elegantly illustrated, \$2 per annum; 5c per copy. Daily and Sunday, \$5 per annum; 50c per month.
WEEKLY EDITION, 50 cents a year.
Address all letters to THE TIMES, Philadelphia.

Going to Buy a Watch?
If so, buy one that cannot be stolen. The only thief-proof Watches are those with Non-pull-out BOWS.
Here's the Idea: The bow has a groove on each end. A collar runs down inside the pendant (stem) and fits into the grooves, firmly locking the bow to the pendant, so that it cannot be pulled or twisted off.
To be sure of getting a Non-pull-out, see that the case is stamped with this trade mark. It cannot be had with any other kind.
Send a postal for a watch case open to the famous Boss Filled Case makers.
Keystone Watch Case Co., PHILADELPHIA.
Subscribe for the REPORTER.

ATTORNEYS.

IRA C. MITCHELL, Attorney-at-Law, Bellefonte, Pa. Office, Room No. 10, Crider's Exchange. oct194
JOHN KLINE, Attorney at Law, BELLEFONTE, PA. Office on second floor of Furt's building north of Court House. Can be consulted in German and English. an87

J. H. ORVIS, C. M. BOWER, E. L. ORVIS (ORVIS, BOWER & ORVIS, Attorneys at Law, BELLEFONTE, PA. Office in Crider's Exchange building on second floor. an85

D. F. FORTNEY, Attorney at Law, BELLEFONTE, PA. Office in Conrad Building. jan92

CLEMANT DALE, Attorney at Law, BELLEFONTE, PA. Office N. W. corner Diamond two doors from First National Bank. jan87

W. G. RUNKLE, Attorney-at-Law, BELLEFONTE, PA. All kinds of legal business attended to promptly. Special attention given to collections. Office, 2d floor Crider's Exchange. jan92

J. L. SPANGLER, C. P. HEWER, SPANGLER & HEWER, Attorneys at Law, BELLEFONTE, PA. Special attention to collections. Practice in all the courts. Consultation in German and English. jan92

S. D. GETTIG, ATTORNEY-AT-LAW, BELLEFONTE, PA. Collections and all legal business attended to promptly. Consultations German and English. Office in Exchange Building. jan92

N. B. SPANGLER, ATTORNEY-AT-LAW, BELLEFONTE, PA. Practices in all the courts. Consultation in English and German. Office, Crider Exchange Building. nov195

BANKS.

CENTRE COUNTY BANKING CO., BELLEFONTE, PA. Receive deposits. Discount notes. jan92 J. D. STROGER, Cashier.

HOTELS.

IRVIN HOUSE, S. Woods Caldwell, Proprietor, LOCK HAVEN, PA. Terms reasonable. Good sample rooms on first floor. jan92

BUSH HOUSE, W. L. Daggett, Proprietor, BELLEFONTE, PA. Special attention given to country trade. apr90

NEW GARMAN HOUSE, Opposite Court House, BELLEFONTE, PA. New building, new furniture throughout, steam heat, electric bells and all modern improvements. Good table and moderate charges. apr94

SPRING MILLS HOTEL, D. H. Ruhl, Proprietor, SPRING MILLS, PA. Free bus to and from all trains. jan92

NEW BROCKERTHOFF HOUSE, J. M. Neubauer, Proprietor, BELLEFONTE, PA. Free bus to and from all trains. Good sample rooms on first floor. Special rates to witnesses and jurors. apr94

OLD FORT HOTEL, EDWIN RUHL, Proprietor. This old and well known house has been newly furnished throughout. Accommodations first-class and rates reasonable. Private parties can have special accommodations. apr94

ABS. HARTER, AUCTIONEER, MILLHEIM, PA.

THE PENNSYLVANIA STATE COLLEGE LOCATED IN ONE OF THE MOST BEAUTIFUL AND HEALTHFUL SPOTS IN THE ALLEGHENY REGION; UNDENOMINATIONAL; OPEN TO BOTH SEXES; TUITION FREE, BOARD AND OTHER EXPENSES VERY LOW. NEW BUILDINGS AND EQUIPMENT.

LEADING DEPARTMENTS OF STUDY.
1. AGRICULTURE (Three Courses) and AGRICULTURAL CHEMISTRY; with constant illustrations on the Farm and in the Laboratory.
2. BOTANY and HORTICULTURE; theoretical and practical. Students taught original study with the microscope.
3. CHEMISTRY, with an unusually full and thorough course in the Laboratory. (CIVIL ENGINEERING.) These courses are given in connection with the MECHANICAL ENGINEERING; as are accompanied with very extensive practical exercises in the Field, the Shop, and the Laboratory.
4. HISTORY; Ancient and Modern, with original investigation.
5. INDUSTRIAL ART and DESIGN.
6. LADIES' COURSE IN LITERATURE and SCIENCE. Two years. All facilities for Music, vocal and instrumental.
7. LANGUAGE and LITERATURE; Latin (optional), French, German and English (required), one or more continued through the entire course.
8. MATHEMATICS and ASTRONOMY; pure and applied.
9. MECHANICAL ARTS; combining shop work with study, three years' course; new building and equipment.
10. MENTAL, MORAL and POLITICAL SCIENCE. Constitutional Law and History (Political Economy, etc.).
11. MILITARY SCIENCE; instruction theoretical and practical, including each arm of the service.
12. PREPARATORY DEPARTMENT. Two years—carefully graded and thorough. Fall term opens Sept. 11, 1892. Examinations for admission, June 16 and Sept. 13. Commencement week June 12-15, 1892. For Catalogue or other information, address,
GEO. W. ATHERTON, LL. D., Pres't, State College, Centre Co., Pa.

CONSULT ALL OTHERS FAIL
Consult the Old Reliable Specialist **DR. LOBB**
329 N. 15th St., Below Callowhill Philadelphia, Pa.

Thirty Years' Continuous Practice in all special diseases of both sexes. Loss of Mucous, Errors of Youth and all diseases of the Blood, Nerves, Skin, and Kidneys. Debility and Loss of Memory resulting from Abuse, Excess, Impurement of Heredity are permanently cured by Dr. Lobb, seek his advice at once. He guarantees a positive and radical cure in every case he treats, bringing back Health and Vigor in the most serious cases. Consultation and examination free and strictly confidential. Office hours daily and on Sundays, from 9 A. M. to 3 P. M. and 6 to 9 evenings. Send or call for free book on Errors of Youth and obscure diseases of both sexes.

PENNSYLVANIA R. R.

Philadelphia & Erie R. R. Division and Northern Central Railway.
Time Table in effect Nov. 25, 1894.

TRAINS LEAVE MONTANDON, EASTWARD
9:15 a. m.—Train 14. (Daily except Sunday) For Sunbury, Wilkesbarre, Hazleton, Pottsville, Harrisburg and intermediate stations, arriving at Philadelphia at 3:05 p. m.; New York, 5:35 p. m.; Baltimore, 8:10 p. m.; Washington, 9:20 p. m., connecting at Philadelphia for all sea-shore points. Through passenger coaches to Philadelphia and Baltimore. Parlor cars to Philadelphia.
1:17 p. m.—Train 8. (Daily except Sunday.) For Sunbury, Harrisburg, Pottsville, Hazleton, Harrisburg and intermediate stations, arriving at Philadelphia at 6:50 p. m.; New York, 9:25 p. m.; Baltimore, 11:45 p. m.; Washington, 1:20 p. m., connecting at Philadelphia for all sea-shore points. Through passenger coaches to Philadelphia and Baltimore. Parlor cars to Philadelphia.

5:01 p. m.—Train 12. (Daily except Sunday.) For Wilkesbarre, Hazleton, Pottsville, Harrisburg and intermediate stations, arriving at Philadelphia at 11:35 p. m.; New York, 3:05 a. m.; Baltimore, 5:40 a. m.; Washington, 7:45 a. m. Passenger coaches to Wilkesbarre and Philadelphia.
7:18 p. m.—Train 6. (Daily.) For Sunbury, Harrisburg and all intermediate stations, arriving at Philadelphia at 1:20 a. m.; New York, 3:55 a. m.; Baltimore, 6:20 a. m.; Washington, 7:45 a. m. Pullman sleeping cars from Harrisburg to Philadelphia and New York. Philadelphia passenger cars remain in sleeper undisturbed until 7:00 a. m.

1:29 a. m.—Train 4. (Daily.) For Sunbury, Harrisburg and intermediate stations, arriving at Philadelphia at 6:25 a. m.; New York, 8:55 a. m.; Baltimore, 11:30 a. m.; Washington, 1:05 p. m. Pullman sleeping cars from Philadelphia and Baltimore.
5:07 a. m.—Train 3. (Daily.) For Erie and Canandaigua and intermediate stations, arriving at Philadelphia at 10:20 a. m.; New York, 12:50 p. m.; Baltimore, 3:25 p. m.; Washington, 4:45 p. m. Pullman sleeping cars to Erie and Canandaigua. Passenger coaches to Erie and Rochester.
10:17 a. m.—Train 15. (Daily.) For Lock Haven and intermediate stations.
1:56 p. m.—Train 11. (Daily except Sunday.) For Kane, Co. and intermediate stations, arriving at Philadelphia at 6:20 p. m.; New York, 8:50 p. m.; Baltimore, 11:25 p. m.; Washington, 1:00 p. m. Pullman sleeping cars to Kane and Rochester.
5:30 p. m.—Train 1. (Daily except Sunday.) For Gettysburg, Elmira and intermediate stations.
9:45 p. m.—Train 13. (Daily except Sunday.) For Williamsport and intermediate stations.

WESTWARD!
1:56 p. m.—Train 11. (Daily except Sunday.) For Kane, Co. and intermediate stations, arriving at Philadelphia at 6:20 p. m.; New York, 8:50 p. m.; Baltimore, 11:25 p. m.; Washington, 1:00 p. m. Pullman sleeping cars to Kane and Rochester.
5:30 p. m.—Train 1. (Daily except Sunday.) For Gettysburg, Elmira and intermediate stations.
9:45 p. m.—Train 13. (Daily except Sunday.) For Williamsport and intermediate stations.

THROUGH TRAINS FOR MONTANDON FROM EAST AND SOUTH
Train 15 leaves New York 12:15 night, Philadelphia 4:30 a. m., Baltimore 4:45 a. m., Harrisburg 5:15 a. m., daily, Wilkesbarre, 7:25 a. m., Daily except Sunday, arriving at Montandon 10:17 a. m.
Train 11 leaves Philadelphia 8:50 a. m., Washington 7:50 a. m., Baltimore 8:55 a. m., Wilkesbarre 10:15 a. m., (Daily except Sunday) arriving at Montandon 1:56 p. m., with parlor car from Philadelphia and through passenger coaches from Philadelphia and Baltimore.
Train 1 leaves New York 9:50 a. m., Philadelphia 12:25 p. m., Washington at 10:20 a. m., Baltimore at 1:40 p. m., Wilkesbarre 3:12 p. m., arriving at Montandon at 5:07 p. m., week days, with through passenger coaches from Philadelphia and Baltimore.
Train 13 leaves New York 2:10 p. m., week days, 2:00 p. m. Sunday, Philadelphia 4:50 p. m., Harrisburg 4:30 p. m., Sunbury, Washington 8:15 p. m., Baltimore 4:45 p. m., arriving at Montandon 9:45 p. m. Through Parlor Car and passenger coach from Philadelphia.
Train 3 leaves New York at 5:00 p. m., Philadelphia 11:20 p. m., Washington at 10:20 a. m., Baltimore 1:40 p. m., (daily) arriving at Montandon at 5:07 a. m., with through Pullman sleeping cars from Philadelphia, Washington and Baltimore and through passenger coaches from Philadelphia and Baltimore.

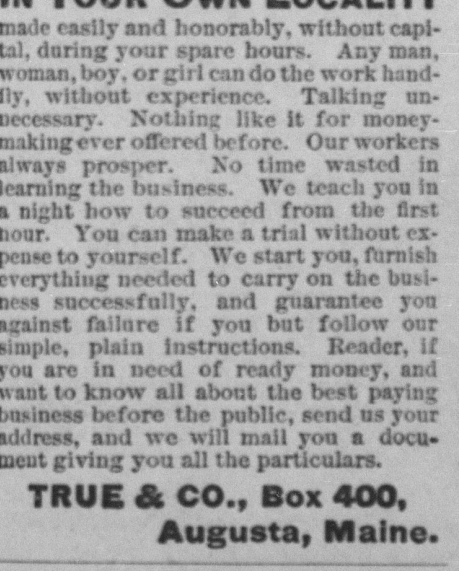
LEWISBURG AND TYONE RAILROAD.
Daily Except Sunday.
Westward. Eastward.
P. M. A. M. STATIONS. A. T. M. P. M.
1:58 - 5:40 Montandon 9:10 4:55
2:08 - 6:15 Lewisburg 9:00 4:47
2:18 - 6:25 Biech 8:52 4:39
2:22 - 6:28 Vicksburg 8:47 4:35
2:31 - 6:37 Millburg 8:38 4:27
2:43 - 6:50 Millmont 8:25 4:15
2:51 - 6:58 Iron 8:17 4:07
3:01 - 7:07 Paddy Mountain 8:08 3:59
3:09 - 7:15 Coburn 7:58 3:50
3:17 - 7:23 Zephyr 7:48 3:42
3:27 - 7:35 Kissing Spring 7:31 3:34
3:37 - 7:42 Penn Cave 7:14 3:26
3:46 - 7:50 Centre Hall 6:56 3:18
3:57 - 7:59 Green 6:40 3:10
4:07 - 8:08 Linden Hall 6:22 3:02
4:18 - 8:24 Oak Hall 6:07 2:54
4:28 - 8:32 Legmont 5:51 2:46
4:37 - 8:41 Dale Summit 5:38 2:38
4:47 - 8:47 Pleasant Gap 5:28 2:30
4:50 - 8:51 Acemann 5:19 2:23
4:57 - 8:55 Bellefonte 5:10 2:15

Additional trains leave Lewisburg for Montandon at 5:20 a. m., 10:00 a. m., 1:20, 3:45 and 7:40 p. m., returning leave Montandon for Lewisburg at 8:20 a. m., 10:19 a. m., 5:02 p. m., 6:00 p. m., and 8:00 p. m.
On Sundays train leaves Montandon 10:14 a. m., and 8:00 p. m., returning leave Lewisburg 10:25 a. m., and 8:05 p. m.
For rates, maps, etc., call on agent or write, Thos. E. Watt, P. A. W. D., 110 Fifth Ave., Pittsburgh, Pa.
S. M. PREVOST, J. R. WOOD
General Manager. Gen'l Pass'g. Agt.

120 DOLLARS PER MONTH

IN YOUR OWN LOCALITY
made easily and honorably, without capital, during your spare hours. Any man, woman, boy, or girl can do the work handsomely, without experience. Talking unnecessary. Nothing like it for money-making ever offered before. Our workers always prosper. No time wasted in learning the business. We teach you in a night how to succeed from the first hour. You can make a trial without expense to yourself. We start you, furnish everything needed to carry on the business successfully, and guarantee you against failure if you but follow our simple, plain instructions. Reader, if you are in need of ready money, and want to know all about the best paying business before the public, send us your address, and we will mail you a document giving you all the particulars.
TRUE & CO., Box 400, Augusta, Maine.

HENCH & DROMGOLD'S



SAW MILL AND ENGINES
A wonderful improvement in Friction Feeds and Gigs-Back. Back motion of Carriage three times as fast as any other in the market. Friction Clutch Feed, causing all the feed going to stand still while backing; great saving in power and wear. Drive for circular saws and other work free upon application. Also Spring Tooth Harrows, Hay Rakes, Cultivators, Corn Planters, Shovelers, etc. Horse and Mule Power.
HENCH & DROMGOLD, Manfrs., YORK, PA.

LETTERS

Patents and Trade-Marks obtained, and all Patent business conducted for inventors FREE. OUR OFFICE IS OPPOSITE U. S. PATENT OFFICE and we can secure patent in less time than those remote from Washington. Send model, drawing or photo, with description. We advise, if patentable or not, free of charge. Our fee not due till patent is secured. A PAMPHLET, "How to Obtain Patents," with full list of names in the U. S. and foreign countries, sent free. Address,
C. A. SNOW & CO.,
Opp. Patent Office, Washington, D. C.

ANSY PILLS!

ALL GUARANTY PILLS! GUARANTY PILLS! GUARANTY PILLS! GUARANTY PILLS! GUARANTY PILLS!