

SOLID TRUTH . . .

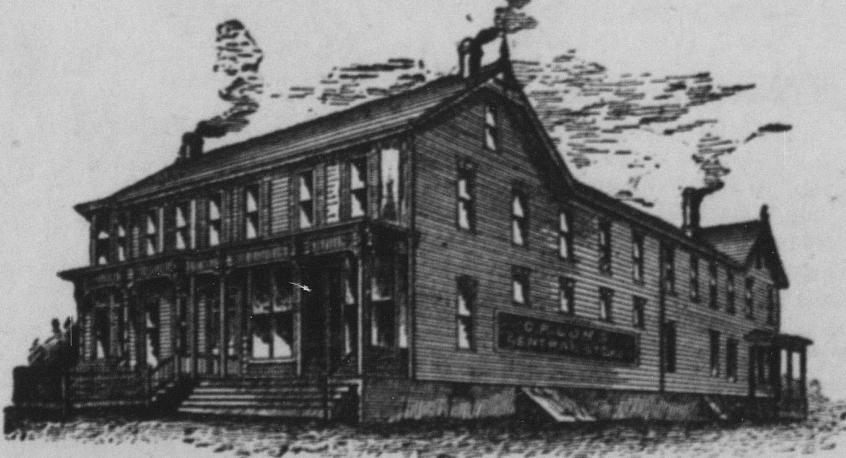
Is the basis of our advertisements.
We have built up our Trade by sticking to it at all times. You know us for our reliability. Honesty in Price, Quality and Wear. There is

No Misrepresentation !

In any respect, and any Article you purchase from us can be returned for its full value in Cash or Cash if not Satisfactory.

CALL AND SEE US ABOUT YOUR Spring Suit or the one for your boy. It will pay you.

ADVERTISER LOW PRICES!



We have the finest stock of Dry Goods, Groceries, Notions, Boots, Shoes, and Clothing, which will be sold at lower prices than ever before. What's a bargain? you ask. It depends entirely where you get it. If a reputable house sells a line of goods at a price lower than any other house can sell it, that's a Bargain, and in this ad. we will show you the definition of the word. Here's a few in groceries.

- | | | | |
|---------------------------------|----|-----------------------------|----|
| 5 lb. Granulated Sugar 30 now | 25 | 6 lb. Currants, | 25 |
| 3 cans Corn 36, now | 25 | 4 lb Rice, | 25 |
| 3 cans Peas 36 now | 25 | 3 lb. Ginger Snaps 45, now | 25 |
| 5 lb. best Lima Beans 30, now | 25 | 3 lb. Soda Biscuits 45, now | 25 |
| 5 lb. best French Beans 35, now | 30 | Good Bread 20, now | 13 |
| | | Whitewash Brush 10, now | 5 |

FISH!

Pails, 63c | Quarter Barrels, 1 43
Quality Guaranteed.

Boots and Shoes!

- | | | | |
|--|----|---------------------------------|------|
| Ladies Button Shoes 1.45, now | 99 | Ladies' Fine Tip Shoes 1.50 now | 1.00 |
| New line of Shoes at 30 per cent. below former prices. | | | |
| Men's Shoes never were so cheap. | | | |

Special Bargains in Dishes and Glassware.

The rush for Spring goods is here, but with our new building and enlarged stock, we are prepared for it, but the rush only leaves us time to say in conclusion, come and see.

C. P. LONG.

Spring Mills, Pa.

TREASURER'S SALE OF UN-SEATED LANDS FOR TAXES FOR 1924.
Agreeable to the provisions of law 78 126 relating to the sale of unseated tracts of land for the non-payment of taxes. Notice is hereby given that there will be exposed to public sale or outcry 230 of the following tracts of unseated lands in the county of Centre, Pa., for taxes due 1924 and unpaid thereon, at the Court House, in the borough of Bellefonte, on Monday, the 11th day of June, 1924, at 1 o'clock, p. m.

BENNER TWP.		200	Hale, J. M.	4 08	218	Harrison, Walter	15 11
BURNSIDE TWP.		200	Johnson, Thomas	1 40	219	Godfrey, Martha	18 11
BURNSIDE TWP.		200	Johnson, Eleanor	3 39	70	Gray, Wm.	11 38
BURNSIDE TWP.		200	Ling, E. J.	2 91	149	Packer & Lucas	5 88
BURNSIDE TWP.		200	Ling, E. J.	2 91	150	McCoy, Frank	8 08
BURNSIDE TWP.		200	Smith, John	4 30	144	Packer & Lucas	5 88
BURNSIDE TWP.		200	Black, Jas.	12 50	51	McCoy, Frank	8 08
BURNSIDE TWP.		200	Brady, Roy	13 02	52	Packer & Lucas	5 88
BURNSIDE TWP.		200	Brady, Wm F.	17 16	116	McCoy, Frank	8 08
BURNSIDE TWP.		200	Bill, Alex.	17 76	126	Packer & Lucas	5 88
BURNSIDE TWP.		200	Boyd, John	15 40	54	McCoy, Frank	8 08
BURNSIDE TWP.		200	Boyd, John	15 40	54	Packer & Lucas	5 88
BURNSIDE TWP.		200	Cook, Wm.	17 12	121	McCoy, Frank	8 08
BURNSIDE TWP.		200	Cowden, John	17 25	125	Packer & Lucas	5 88
BURNSIDE TWP.		200	Cox, Fred	13 29	129	McCoy, Frank	8 08
BURNSIDE TWP.		200	Dewart, John	13 26	130	Packer & Lucas	5 88
BURNSIDE TWP.		200	Dewart, Wm.	13 26	130	McCoy, Frank	8 08
BURNSIDE TWP.		200	Donnelly, John	13 26	130	Packer & Lucas	5 88
BURNSIDE TWP.		200	Fox, Samuel M.	13 08	181	McCoy, Frank	8 08
BURNSIDE TWP.		200	Gray, Robert	13 00	180	Packer & Lucas	5 88
BURNSIDE TWP.		200	Boyer, Robert	13 00	180	McCoy, Frank	8 08
BURNSIDE TWP.		200	Grant, Thomas	1 20	208	Packer & Lucas	5 88
BURNSIDE TWP.		200	Gibson, Charles	1 30	210	McCoy, Frank	8 08
BURNSIDE TWP.		200	Hall, Charles	1 30	210	Packer & Lucas	5 88
BURNSIDE TWP.		200	Hall, Charles	1 30	210	McCoy, Frank	8 08
BURNSIDE TWP.		200	Hamp, Bernard	1 30	210	Packer & Lucas	5 88
BURNSIDE TWP.		200	Hamp, Bernard	1 30	210	McCoy, Frank	8 08
BURNSIDE TWP.		200	Hamp, Bernard	1 30	210	Packer & Lucas	5 88
BURNSIDE TWP.		200	Hamp, Bernard	1 30	210	McCoy, Frank	8 08
BURNSIDE TWP.		200	Hamp, Bernard	1 30	210	Packer & Lucas	5 88

HOWARD TWP.		122	Eberman, Philip	6 95	360	Prim, John	16 56
HOWARD TWP.		122	Ebler, Christian	49 26	361	Prim, John	16 56
HOWARD TWP.		122	Ebler, Daniel	119 48	362	Prim, John	16 56
HOWARD TWP.		122	Eberman, Philip	6 95	360	Parker George	19 65
HOWARD TWP.		122	Erskine, Thomas	17 40	423	Parker George	19 65
HOWARD TWP.		122	Erskine, Thomas	17 40	423	Parker George	19 65
HOWARD TWP.		122	Erskine, Thomas	17 40	423	Parker George	19 65
HOWARD TWP.		122	Erskine, Thomas	17 40	423	Parker George	19 65

LIBERTY TWP.		121	Grove & McKoon	18 30	29	Wagon Mary W	3 57
LIBERTY TWP.		121	Grove & McKoon	18 30	29	Wagon Mary W	3 57
LIBERTY TWP.		121	Grove & McKoon	18 30	29	Wagon Mary W	3 57
LIBERTY TWP.		121	Grove & McKoon	18 30	29	Wagon Mary W	3 57
LIBERTY TWP.		121	Grove & McKoon	18 30	29	Wagon Mary W	3 57

MILES TWP.		200	Boyd Hugh	9 06	443	Mason Richard	49 26
MILES TWP.		200	Boyd Hugh	9 06	443	Mason Richard	49 26
MILES TWP.		200	Boyd Hugh	9 06	443	Mason Richard	49 26
MILES TWP.		200	Boyd Hugh	9 06	443	Mason Richard	49 26
MILES TWP.		200	Boyd Hugh	9 06	443	Mason Richard	49 26

A Great Opportunity!

Our immense stock of Fall and Winter Goods are now in, consisting of Clothing, Overcoats, Dry Goods, the finest selections of Dress Goods ever displayed in this valley, Boots and Shoes, etc. These goods are first-class, and every thing of this seasons production. We are offering all our goods at low prices and are

AT OUR OLD TRICKS!

That of selling the best of everything in our store at prices that dont suit our competitors, but please the buyers immensely.

HARPER & KREAMER, - CENTRE HALL.

We are offering most valuable and useful Premiums. Did you get a Card? Ask for one.

....The South Bend Plow....

First and Highest Award for Merit at the World's Fair! A Plow which commands the Highest Premiums and is sold at the lowest price.

Read the Low Prices for Chilled and Polished Shares.

- Common Shares, - 30 cts. each
- Deep Suction Shares, 30 cts. each
- Long Stone Shares, - 30 cts. each
- Short Stone Shares, - 30 cts. each
- Penna. Stone shares, - 30 cts. each
- Cutter Shares for Sod Plow, - 40 cts. each
- Socket Shares with Reversible Chilled Points, - 40 cts. each
- Socket Shares with Reversible Steel Points, - 50 cts. each
- Steel Shares for use in Plow-Mark Shares, - 30 cts. each
- Shore whose great strength and sharp cutting edge is required, - \$2.50 each

A South Bend Plow equipped with a share adapted to the particular soil for which it is intended, will hold the plow in any soil in which the team can pull it.

IMPLEMENTS--Spring Tooth Harrows, Spring Cultivators on wheels, Corn Planters, Land Roller of wood and steel, at lowest prices.

FERTILIZERS--High Grade Acid Phosphate, Champion \$25.00 Ammoniated Bone Super Phosphate, Special Potato Phosphate, Garden or Vegetable Fertilizer, Lawn Grass Fertilizer, and Fertilizer Materials at our Warehouse in Bellefonte. We warrant High Grade Goods for Low Prices. White Land Plaster, Gray Land Plaster, and Agricultural Salt.

BINDER TWINE--Pure Manila Binder Twine 10 cents per pound, Standard Binder Twine 9 cents per pound, Sisal Binder Twine 8 cents per pound. A discount of one cent per pound will be allowed on full bales on early orders.

DEAPER SECTIONS--We have purchased one thousand reaper and mower sections for the McCormick, Champion, Deering, Johnson, Osborne and Wood Machines, which sell at 8 cents each, or 90 cents per doz. Now is the time to secure the best knives for the least money--first come first served.

McCALMONT & CO., Bellefonte, Pa.

P. R. AUMAN, - PAINTING AND PAPER HANGING, -

Charges Most Reasonable. Spring Mills, Pa.

ORPHAN'S COURT SALE--BY VIRTUE OF AN order of the Orphan's Court of Centre county, there will be exposed to public sale on the premises, near Tusseyville, on SATURDAY, May 24th, 1894, at 1 o'clock p. m., the following real estate of E. Thier, late of Potter Twp., deceased:

No. 1. All that certain tract of land situate in Potter township, bounded and described as follows: On the east by lands of Daniel Fleisher, on the south by lands of Daniel Fleisher and Julia Miller, on the west by lands of William Rishell, W. F. Rockey and G. W. Spangler, and on the north by lands of G. W. Spangler and Daniel Fleisher, containing 13 acres and 134 perches and allowance. Thereon erected a two story frame dwelling house, barn, and other outbuildings.

No. 2. All that certain tract of land situate in Potter township, bounded and described as follows: On the east by lands of John Mitterling, on the south by lands of Daniel Fleisher, on the west by lands of G. W. Spangler, containing 5 acres and 128 perches, net measure. No improvements.

No. 3. All that certain tract of land situate in Potter township, bounded and described as follows: On the east by lands of George Lee, on the south by lands of G. W. Spangler and George Lee, on the west by lands of George Lee, and on the north by lands of George Lee, containing 5 acres and 32 perches. No improvements.

TERMS OF SALE. 1/2 of purchase money to be paid on confirmation of sale, 1/4 in one year, and the balance in two years with interest, deferred payments to be secured by bond and mortgage on the premises.

W. A. WAGNER, Esq., of Bellefonte, Pa., Auctioneer.

Chamberlain's Eye and Skin Ointment.
A certain cure for Chronic Sore Eyes, Tetter, Salt Rheum, Scald Head, Old Chronic Sores, Fever Sores, Eczema, Itch, Pruric Scratches, Sore Nipples and Piles. It is cooling and soothing. Hundreds of cases have been cured by it after all other treatment had failed. It is put up in 25 and 50 cent boxes.

FOR SALE--A mare six years old. Fine single or double driver; a splendid roadster. Call on C. E. ROYER, mar15-4t

THE PENNSYLVANIA STATE COLLEGE

LOCATED IN ONE OF THE MOST BEAUTIFUL AND HEALTHFUL SPOTS IN THE ALLEGHENY REGION, UNDERMINA. TUITION FREE. BOARD AND OTHER EXPENSES VERY LOW. NEW BUILDINGS AND EQUIPMENT.

LEADING DEPARTMENTS OF STUDY.

1. AGRICULTURE (Three Courses) and AGRICULTURAL CHEMISTRY, with constant instruction on the Farm and in the Laboratory.
2. BOTANY and HORTICULTURE; theoretical and practical. Students taught original study with the microscope.
3. CHEMISTRY; with an unusually full and thorough course in the Laboratory.
4. ELECTRICAL ENGINEERING; COURSE IN MECHANICAL ENGINEERING; as are accompanied with very extensive practical exercises in the Field, the Shop, and the Laboratory.
5. PHYSICS; Ancient and Modern, with original investigation.
6. INDUSTRIAL ART and DESIGN.
7. LIBERAL COURSE IN SCIENCE AND SCIENCE; Two years' ample facilities for Music, vocal and instrumental.
8. LANGUAGE and LITERATURE; Latin (optional), French and German and English (required), one or more continued through the entire course.
9. MATHEMATICS and ASTRONOMY; pure and applied.
10. MECHANICAL ARTS; combining shop work with study, three years' course; New building and equipment.
11. POLITICAL and POLITICAL ECONOMY, CONSTITUTIONAL LAW and History, Political Economy, etc.
12. MILITARY SCIENCE; instruction theoretical and practical, including each arm of the service.
13. PREPARATORY DEPARTMENT; two years--carefully graded and thorough.

Full term opens Sept. 24, 1892. Examinations for admission, June 15, and Sept. 18. Commencement week June 12-15, 1892. For Catalogue or other information address: J. H. MILES, President, State College, Centre Co., Pa.